



TRLIA
12th QUARTERLY WORK PLAN
FOR
FEATHER RIVER LEVEE
IMPROVEMENT PROJECT

1. 12th Quarterly Work Plan for quarter: Jan 1 – Mar 31, 2011
2. Date of Report: November 30, 2010
3. 12th Quarter Work Plan Summary:

| Summary | | | | |
|----------------------------------|--------------------|--------------------|--------------------|-----------------------------|
| Description | State Share | Local Share | Total | Local Credit Applied |
| Element 1 & 8 - Land Acquisition | \$1,056,399 | \$234,551 | \$1,290,950 | \$0 |
| Elements 2 through 7, 9A, & 9B | \$926,136 | \$202,037 | \$1,128,173 | \$0 |
| Total | \$1,982,535 | \$436,587 | \$2,419,123 | \$0 |

| Quarterly Summary for Real Estate Activity | |
|--|--------------------|
| State Share Elements 1 & 8 | \$1,056,399 |
| Local Credit Applied Elements 1 & 8 | \$0 |
| Estimated Total Quarterly State Real Estate Funding | \$1,056,399 |

| Quarterly Advance Summary for Non-Real Estate Activity | |
|--|------------------|
| 75% of State Share Elements 2 through 7 & 9A | \$694,602 |
| Prior State Share Underfunded | TBD |
| Total Advance Request of State Share for 11th Quarter [2] | \$694,602 |

[1] Subject to finalized True-Up for 9th and 10th Quarters

The calculation of Total Advance for State Share at Start of 12th Quarter is subject to True-Ups to account for actual expenses incurred in the 9th, 10th Quarters and 11th Quarters. In addition, the State is to take into consideration prior funding received through Real Estate settlements (Danna & Davit cases), Farming Lease Revenue (see Element 6 discussion below), interest earned on State Advance funding (reference the recently submitted 10th QPR), and finally a provision for retention on State funding.

4. Project Element Information:

- **Note:** Element 9B was added to the Overall Work Plan as part of the 11th Quarterly Work Plan submitted September 23, 2010. The transmittal letter of this Work Plan reaffirms that prior request made back in September. Element 9B is for additional work within Segment 1 to fix a relief well V-Ditch that has been found to be defective. This Work Plan reflects this additional work.

- **Engineering and construction matters:**

➤ **Element 1: Land Acquisition:**

- Project Element 1 Feature 1: There is one Eminent Domain cases still pending settlement. The **Nieschulz Cases** were settled in the 10th Quarter, which will be reported on in the 10th Quarterly Progress Report. The **Foster Cases** were settled in the 11th Quarter, which will be reported on in the 11th Quarter Progress Report. As settlements occur TRLIA will submit the court order and request the State share to be deposited into the appropriate escrow account.

- Listed below is the status of the recent eminent domain settlements.

| Element 1: Land Acquisition: <u>Eminent Domain Case</u> | <u>Deposit of Probable Compensation</u> | <u>Settlement</u> | <u>Relocation Expense</u> |
|--|---|--|---|
| APN 014-250-027 & 028 (Naumes) | \$15,580,000 | Settled for \$17,500,000 plus statutory interest and costs | \$0 |
| APN 013-010-010, 34, & 35 (Danna) | \$1,455,000 | Jury verdict of \$1,266,625 plus statutory interest and costs | \$0 |
| APN 013-010-014 (Davit) | | Appeal resolved via mediation | |
| APN 014-250-029 (Thomas Rice) | \$155,000 | Settled for \$205,000 and three miscellaneous items | \$0 |
| APN 016-010-009 (Herold) | \$58,500 | Deposit was based on a partial take. The entire property eventually needed to be acquired due to a change in the project | \$195,000 (this sum is included in the settlement amount of \$609,524.47) |

| | | | |
|---|-------------|--|-----|
| | | footprint. The case settled for \$609,524.47 | |
| APN 014-370-017 (Heir Trust) | \$1,400 | Settled for \$18,500 | \$0 |
| APN 014-370-006 and 039 (Anderson) | \$321,000 | Settled for \$521,393.63 plus statutory interest and costs | \$0 |
| APN 014-290-004 (Heir Family) | \$267,000 | Settled for \$520,000 plus statutory interest and costs | \$0 |
| APN 014-370-020 (Hadley) | \$375,000 | Settled for \$411,000 plus statutory interest and costs | \$0 |
| APN 016-010-016 (S. Nieschulz) | \$1,335,000 | Settled for \$1,335,000 plus statutory interest and costs | \$0 |
| APN 016-010-006 (L. Nieschulz) | \$17,200 | Settled for \$30,000 plus statutory interest and costs | \$0 |
| APN 016-060-001 (Foster Bar) | \$100,000 | Settled for \$100,000 | \$0 |
| APN 016-010-008 (Foster House) | \$23,000 | Settled for \$45,000 plus statutory interest and costs | \$0 |
| APN 014-370-029 and 6 others (Foster Ranch) | \$4,830,000 | Settled for \$4,880,000 plus statutory interest and costs | \$0 |

1. Naumes: The final court documents were provided to DWR in March 2010. DWR reimbursed the State share (\$1,508,596.36) to TRLIA on June 16, 2010.
2. Danna: The final court documents were received in February 2010. The amount owed by Danna after statutory interest and court costs are deducted is \$161,899.83. TRLIA agreed to the following items in order to avoid further legal costs due to Danna appealing the court decision:
 - ❖ Reduce the amount owed by \$20,000
 - ❖ Danna pays the amount owed of \$141,899.83 in 3 equal installments over 18 months: 1/3 on June 15, 2010 (**Paid**, and has been reflected in the 9th and 10th Quarter Progress Reports.), 1/3 on December 15, 2010 and 1/3 on June 15, 2011.
 - ❖ No payment of interest
3. Davit: The returned \$65,228.18 was received by TRLIA during the 8th quarter. This revenue will be used to offset future construction funding provided by State and has been reflected in the 9th and 10th Quarter Progress Reports. Further

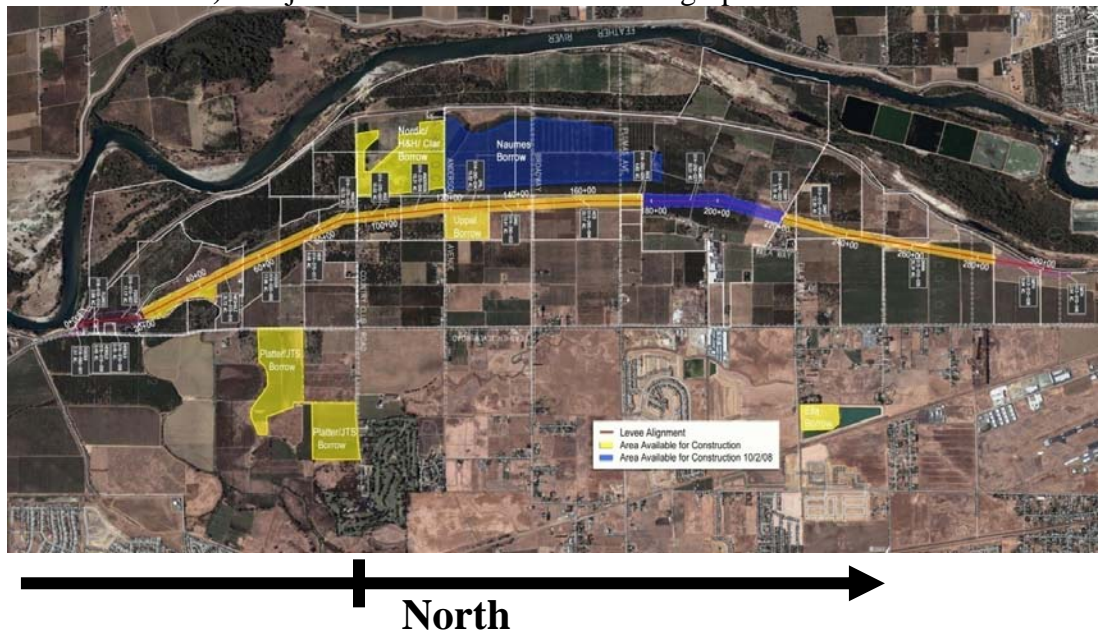
discussions and details on this matter will be worked out between TRLIA and DWR.

4. Thomas Rice: Final Settlement with the Rices was reached and the stipulated judgment was entered by the Court on June 25, 2010 and the final order of condemnation was recorded on August 19, 2010. The terms of the agreement are:
 - ❖ Settlement was for \$205,000. TRLIA paid the Rices the additional \$50,000 and will submit an invoice to the State to pay its share of the additional cost.
 - ❖ TRLIA prepared and submitted a lot line adjustment to the County. TRLIA will submit the costs to the State for payment of the State's share.
 - ❖ TRLIA prepared and submitted paperwork to the County to limit the use of Plumas Ave from Rice house to Setback levee. TRLIA will submit the costs to the State for payment of the State's share.
 - ❖ TRLIA fenced the area containing peach trees within the TRLIA levee easement right of way. TRLIA will submit the costs to the State for payment of the State's share.
5. Herold: TRLIA settled with the property owner during the 6th quarter and the property owner has been paid. Because additional property was sought, TRLIA had to re-serve the other parties who had an interest in the property and who had previously disclaimed or defaulted. Services were completed in the 8th Quarter and defaults will be entered in the 9th Quarter. The Court entered judgment on June 25, 2010, and TRLIA is in the process of obtaining a final order of condemnation. TRLIA will thereafter submit its final invoice package to the State for reimbursement of the State's share.
6. Heir Trust: The final settlement documents were received in January 2010. The judgment has been entered and the final order of condemnation recorded. The owners were paid the settlement sum in the 9th Quarter and TRLIA will submit its final accounting package to the State for reimbursement of the State's share.
7. Heir Family: The judgment was entered on July 16, 2010 and the final order of condemnation was recorded on August 19, 2010. The owners were paid the settlement sum and TRLIA will submit its final accounting package to the State for reimbursement of the State's share.

8. Anderson: The judgment was entered on May 27, 2010 and the defendants have been paid the settlement sum. The final order of condemnation was recorded on August 19, 2010. TRLIA will submit its final accounting package to the State for reimbursement of the State's share.
 9. Neischulz S.: TRLIA reached a settlement with the property owner on August 23, 2010. The parties are in the process of documenting their settlement through a stipulation for entry of judgment and a final order of condemnation.
 10. Neischulz L.: TRLIA reached a settlement with the property owners on August 23, 2010. The parties are in the process of documenting their settlement through a stipulation for entry of judgment and a final order of condemnation.
 11. Foster Bar: TRLIA reached a settlement with the property owners on October 26, 2010. The parties are in the process of documenting their settlement through a stipulation for entry of judgment and a final order of condemnation.
 12. Foster House: TRLIA reached a settlement with the property owners on November 10, 2010. The parties are in the process of documenting their settlement through a stipulation for entry of judgment and a final order of condemnation.
 13. Foster Ranch: TRLIA reached a settlement with the property owners on November 10, 2010. The parties are in the process of documenting their settlement through a stipulation for entry of judgment and a final order of condemnation.
- The remaining eminent domain case is identified below. This includes the scheduled trial and exchange dates for that case, and the amount of probable compensation TRLIA deposited with the State based on its pre-condemnation appraisals.
 1. APN 013-010-013 (Mann) Trial 3/29/11; Exchange date 1/14/11; Deposit \$1,250,000.
- o Feature 2 (Segment 3): The information below reflects upcoming Real Estate actions.
 - TRLIA will continue with the Segment 3 real estate action to acquire a landside 10-ft-wide levee O&M toe access corridor. Acquisition of the O&M corridor will most likely continue into 2011. This continued action may require an amendment to the existing Segment 3 Real Estate Plan.

- TRLIA will submit any revisions to the existing Segment 3 Real Estate Plan in early January 2011.
- During this quarter, TRLIA will be approaching 2 property owners along the along the southern portion of Segment 3 to appraise and acquire their property.
- During this quarter, TRLIA will be evaluating the width of the existing O&M corridor in the northern portion of Segment 3 to determine whether or not it meets the 10-ft width criteria for all O&M corridors.


➤ **Element 2: Feather River Segment 2 setback levee w/o tie-ins and new levee construction requiring federal action (except as noted in features):** Project Element 2 is shown in the graphic below

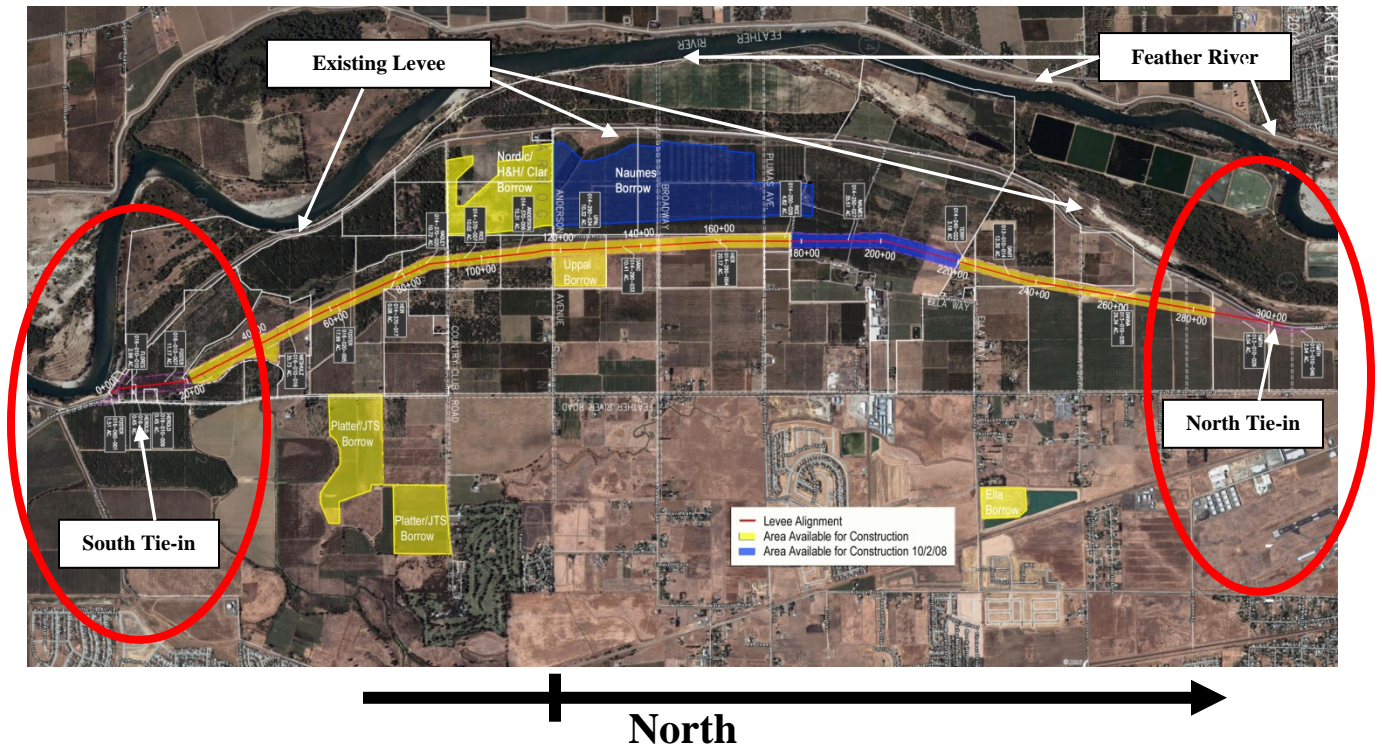


- Feature 1.1 Design: This feature is completed.
- Feature 1.2 Permitting:
 - TRLIA anticipates the Vegetated Wave Buffer to be issued in the 12th quarter at the January 2011 CVFPB meeting. TRLIA submitted an encroachment permit application to the CVFPB for the Vegetated Wave Buffer on September 3, 2009. TRLIA submitted an encroachment permit application to the CVFPB for the Vegetated Wave Buffer on September 3, 2009. In order to process the permit application the CVFPB requested TRLIA submit a long term maintenance plan as part of the application. During the 9th quarter TRLIA worked with RD784 to prepare this maintenance plan. RD784 maintenance costs for vegetated wave

buffer will come from revenues collected from the TRLIA levee O&M Assessment District. The assessment district is an appropriate source of funding since the vegetated wave buffer is part of the levee system (200-year protection). The CVFPB staff has indicated that TRLIA needs to do two additional actions prior to placing the application on the CVFPB agenda for consideration. The two items are: 1) prepare a CEQA addendum to the Feather River EIR for this project, and 2) sign an agreement that indemnifies the State from any CEQA legal actions. TRLIA will complete these two items in the 12th quarter (January 2011)

- TRLIA will continue to work on the encroachment permit application for the Elderberry Mitigation Area during the 12th quarter. TRLIA submitted the encroachment permit application for the Elderberry Mitigation Area in October 2010. The application references the work TRLIA, DWR, CVFPB, and F&WS are doing to establish a safe harbor agreement for elderberry maintenance in the Feather River floodway. DWR has established a Lower Feather River Corridor Management team that consists of local, state, and federal stakeholder to develop a Lower Feather River Corridor Management Plan. TRLIA is on this team. The DWR goal for the team is that over the next two (2) years the plan, which includes the safe harbor agreement concept, will be worked out.
- During this quarter TRLIA it is anticipated that F&WS via the Corps to reinitiate consultation on elderberries and issue an amended Biological Opinion.
- Feature 1.3 Right of Way Support: Both legal and real estate activity will continue during the 12th quarter to support the ongoing land acquisition activities associated with Project Element 1 Feature 1.
- Feature 2: Limited Construction Management will continue during the 12th quarter to match the level of work associated with winter erosion control requirements and Environmental work (Project Element 2, Feature 4). Close out documentation preparation was completed last quarter, see list below.
 - Design Report: submitted January 2008; Addendum 1 April 2008
 - Design Drawings and Specifications used for construction: submitted April 2008
 - Permits: previously submitted. See permit table that is attached for listing.
 - CEQA and NEPA documents: previously submitted. See permit table for listing (attachment 1).

- As-built drawings: As-built drawings for the completed levee were submitted with the Construction Completion Report during the 9th Quarter (May 2010). As-built drawings for non levee Project Element 2, 3, and 4 work items are anticipated to be submitted in December along with the construction report addendum.
 - Feature 3.1 Construction of Setback Levee Foundation: Completed
 - Feature 3.2 Construction of Setback Levee Embankment and related items: Completed
 - Feature 3.3 Relocation of PG&E facilities: Completed
 - Feature 4 Environmental and Cultural Mitigation:
 - It is anticipated that the CVFPB will issue the encroachment permit for the Vegetated Wave Buffer during the 12th quarter. Planting will occur in the 12th quarter (May 2011).
 - It is anticipated that the CVFPB will issue the encroachment permit for the Elderberry Mitigation Area during the 12th quarter. Associate Plant Planting will occur in the 12th quarter (May 2011).
 - Environmental Mitigation/Restoration: Environmental monitoring of the Wetlands Mitigation, Swale, and Elderberry Mitigation Area will continue in the 12th quarter.
 - Cultural Mitigation: Work is completed
 - Feature 5 O&M Manual:
 - A draft O&M manual addendum was issued to DWR in March 2010. No comments have been received yet. The addendum is being finalized in the 11th Quarter (December 2010).
- **Element 3:** Feather River Segment 2 tie-ins and new levee construction requiring federal action.
 - Below is a graphic for Project Element 3 .



- Feature 1 - Construction (Embankment Feature 1.1 and Foundation Feature 1.2): Work is complete.
- **Element 4:** Feather River Segment 2 existing levee degrade
 - Feature 4.1 Construction: Complete
- **Element 5:** Feather River Segment 3 levee improvement:
 - Feature 1.1 Design: Complete
 - Feature A1.2 Permitting: Complete
 - Feature 1.3 Right of Way Support: Both legal and real estate activity will continue during the 12th quarter to support the ongoing land acquisition activities associated with Project Element 1 Feature 2.
 - Feature 2 Construction Management: Complete. Close out documentation has been completed. Below is the status of the Project Element Deliverables:
 - Design Report: submitted March 28, 2007
 - Design Drawings and Specifications used for construction: submitted August 22, 2007

- Permits: previously submitted – see permit table for list (Attachment 1)
 - CEQA and NEPA documents: previously submitted see permit table (Attachment 1)
 - As-built drawings: Submitted June 2009. Supplemental as-builts for the Segment 1 crack and Segment 3 erosion site repairs were submitted in December 2009.
- Feature 3 Construction: Construction Complete
- Feature 4: O&M manual addendum: Complete - Final O&M manual addendum was issued in December 2009.
- **Element 5A:** Feather River Segment 3 Erosion Site 2 (Added to Agreement)
 - Feature A1.1 Design: This feature is completed.
 - Feature A1.2 Permitting: Complete.
 - Feature A1.3 Right of Way Support: Both legal and real estate activity will continue during the 13th quarter to support the ongoing land acquisition activities associated with Project Element 1 Feature 2.
 - Feature A2 Construction Management: Complete. See Project Element 5 for Closeout documents.
 - Feature A3 Construction: Completed
 - Feature A4 O&M Manual: Complete. Final O&M manual addendum was issued in December 2009, which included this Project Element (Erosion Site 2).
- **Element 6:** Feather River Land Management:
 - Feature 1 Environmental Maintenance Activities: Environmental monitoring of the Elderberry Mitigation Area, Wetlands, and Swale will continue during the quarter.
 - Feature 2 Lease Back Activities (e.g. farming): TRLIA has 7 farming leases in the Feather Setback area. Management of farm leases will continue in 13th quarter. The leases are listed below:
 1. Foster (016-020-005, 014-370-030, 014-370-029, 016-010-002, 016-010-007) - 248 Acre Walnut Orchard. Term of lease January 1, 2009 through December 31, 2014.

2. T. Miller (014-370-033) – 20 Acre Walnut Orchard. Term of lease August 16, 2008 to August 15, 2013.
3. Maxey (014-370-024) – 27.38 Acres Walnut, persimmons, mandarins, chestnuts and jujube Orchards. Term of lease August 16, 2008 to August 15, 2013.
4. Hadley (014-370-020) – 9 Acre Walnut Orchard. Term of lease November 1, 2008 to November 30, 2013.
5. Davit (013-010-014) – 99 Acre Walnut & Peach Orchard. Term of lease October 21, 2009 to December 31, 2014.
6. F. Miller (014-370-003 and 014-370-037) – 66 Acres Walnut Orchard. Term of lease July 21, 2010 through December 31, 2013.
7. Nieschulz (016-010-016) – 35.07 Acres of Orchard trees. Term of lease retroactively to January 1, 2009 and terminating at the end of the 2011 crop year. The lease was executed in September 2010.

A schedule of payments is shown below: F. Miller and Nieschulz have payments due in December 2010 (late 12th quarter) – no other payments are due in the 13th quarter.

- Foster – No rent due the first year. Second year’s rent due on or before May 1, 2011. Rent is 10% of the Adjusted Gross Income.
- T. Miller – No Rent due the first year. Second year’s due on or before August 15, 2011. Miller paid \$1,722.56 for the second year’s rent.
- Maxey – No rent due the first year. Second year’s due on or before August 15, 2011. \$3,143.13 was received for the second year. Rent is 10% of the Gross Income on walnuts and 10 % of the Adjusted Gross Income for other crops.
- Hadley – No rent due the first year. Second year’s rent due on or before September 1, 2011. Rent is 10% of the Gross Sales.
- Davit – First year’s rent due on or before May 1, 2011. Rent is 10% of the Adjusted Gross Income.
- F. Miller – First year’s rent due on or before: 80% December 31, 2011 and 20% April 15, 2012. Rent is 30% of the Gross Income.

- At the start of the 12th Quarter, TRLIA proposes to shift the allocation of overhead expenses between its two EIP projects based upon the remaining budget for all TRLIA Projects through the term of the funding agreement. Preliminary discussions regarding this action have taken place with DWR staff and TRLIA will formalize this action through specific correspondence in the coming weeks. The current allocation of EIP eligible overhead expenses between the two EIP projects is 58.7% Feather / 41.3% Yuba. TRLIA proposes to shift the allocation to approximately 23.6% Feather / 76.4% Yuba. The forecasted expenditures in this work plan reflect the lowered overhead allocation to FRLIP project.

- **Element 8:** Feather River EIP Land Acquisition (formally Associated Project Element 1)
 - Feature 1 Feather Segment 1:
 - During the this Quarter TRLIA anticipates submission of the Segment 1 Real Estate plan to DWR to acquire a landside 50-ft wide-levee O&M toe access corridor (Dec 2010 or Jan 2011). DWR approval of plan is anticipated during the 12th quarter.
 - During this quarter TRLIA anticipates approaching the 3 property owners within Feather Segment 1 to appraise and acquire the 50 ft wide levee O&M toe access corridor.

- **Element 9:** Feather River Segment 1 Levee Improvement (formally Associated Project Element 2)
 - Feature 1.1 Design: Complete.
 - Feature 1.2 Permitting: Complete.
 - Feature 1.3 Right of Way Support: Both legal and real estate activity will continue during this quarter to support the ongoing land acquisition activities associated with Project Element 8 Feature 1.
 - During the this Quarter TRLIA anticipates submission of the Segment 1 Real Estate plan to DWR to acquire a landside 50-ft wide-levee O&M toe access corridor (Dec 2010 or Jan 2011). DWR approval of plan is anticipated during the 12th quarter.
 - During this quarter TRLIA anticipates approaching the 3 property owners within Feather Segment 1 to appraise and acquire the 50 ft wide levee O&M toe access corridor.

- Feature 2 Construction Management: Complete. Close out documentation has been completed. Below is the status of the Project Element Deliverables:
 - Design Report: submitted March 28, 2007
 - Design Drawings and Specifications used for construction: submitted August 22, 2007
 - Permits: previously submitted – see permit table for list
 - CEQA and NEPA documents: previously submitted see permit table (Attachment 2)
 - As-built drawings: Submitted June 2009. Supplemental as-builts for the Segment 1 crack and Segment 3 erosion site repairs were submitted in December 2009.
 - Feature 3 Construction: Complete.
 - Feature 4 O&M manual addendum: Complete. Final O&M manual addendum was issued in December 2009.
- **Element 9A:** Feather River Segment 1 Crack Repair (Added to Work Plan)
- Feature A1.1 Engineering and Construction Management: Crack monitoring (e.g. inclinometers) will continue during this quarter.
 - Feature A1.2 Right of Way Support: See Project Element 9 Feature 1.3
 - Feature A2 Construction: Complete
 - Feature A3 O&M manual addendum: Work is completed. Final O&M manual addendum was issued in December 2009.
- **Element 9B:** Feather River Segment 1 V-Ditch Repair (Added to Work Plan with this Report)
- Feature B1 Engineering, Construction Management, and O&M Manual Addendum: Design is pending DWR approval of Project Element. No work/budget is included in the Work Plan forecast for the 12th Quarter.
 - Feature B2 Construction: No Work will be accomplished until DWR approval of Project Element.

- **Environmental matters:**

- **Project Element 2:**

- River Partners continues to maintain the Feather River Elderberry mitigation area, wetlands, and drainage swale.
- Vegetated Wave Buffer: See Project Element 2 Feature 1.2 for update.
- Elderberry Mitigation Area: See Project Element 2 Feature 1.2 for update.
- In 10th quarter TRLIA requested F&WS via the Corps to reinitiate consultation on elderberries. This request was done due to additional elderberries being encountered than identified in the Biological Opinion. During the 12th quarter it is anticipated that F&WS via the Corps to reinitiate consultation on elderberries and issue an amended Biological Opinion.

- **Status of permits, easements, rights-of-way, and approvals as may be required by other State, federal, and/or local agencies:**

- **Project Elements 2, 3, 4, 5, 5A, 9, & 9A:**

- See Attachment 1 for the Permit status update.

- **Project Element 2:**

- The Corps signed the Feather River Setback Levee Environmental Impact Statement 404 permit Record of Decision on December 8, 2008, and issued the final Feather River Setback 404 permit on December 15, 2008.
 - Incorporated into the 404 permit is the approval of the on-site Wetlands Mitigation Plan.
 - A permit condition is that prior to construction, TRLIA needs to provide a construction and performance bond or escrow for the on-site Wetlands project. This was completed in April 2009.
 - A permit condition is that prior to construction, TRLIA needs to provide a fully funded endowment for the on-site Wetlands project. This was completed in April 2009.
 - In 10th quarter TRLIA requested F&WS via the Corps to reinitiate consultation on elderberries. This request was done due to

additional elderberries being encountered than identified in the Biological Opinion. During the 12th quarter it is anticipated that F&WS via the Corps to reinitiate consultation on elderberries and issue an amended Biological Opinion.

- TRLIA anticipates the Vegetated Wave Buffer to be issued in the 12th quarter at the January 2011 CVFPB meeting. TRLIA submitted an encroachment permit application to the CVFPB for the Vegetated Wave Buffer on September 3, 2009. TRLIA submitted an encroachment permit application to the CVFPB for the Vegetated Wave Buffer on September 3, 2009. In order to process the permit application the CVFPB requested TRLIA submit a long term maintenance plan as part of the application. During the 9th quarter TRLIA worked with RD784 to prepare this maintenance plan. RD784 maintenance costs for vegetated wave buffer will come from revenues collected from the TRLIA levee O&M Assessment District. The assessment district is an appropriate source of funding since the vegetated wave buffer is part of the levee system (200-year protection). The CVFPB staff has indicated that TRLIA needs to do two additional actions prior to placing the application on the CVFPB agenda for consideration. The two items are: 1) prepare a CEQA addendum to the Feather River EIR for this project, and 2) sign an agreement that indemnifies the State from any CEQA legal actions. TRLIA will complete these two items in the 12th quarter (January 2011)
 - TRLIA will continue to work on the encroachment permit application for the Elderberry Mitigation Area during the 12th quarter. TRLIA submitted the encroachment permit application for the Elderberry Mitigation Area in October 2010. The application references the work TRLIA, DWR, CVFPB, and F&WS are doing to establish a safe harbor agreement for elderberry maintenance in the Feather River floodway. DWR has established a Lower Feather River Corridor Management team that consists of local, state, and federal stakeholder to develop a Lower Feather River Corridor Management Plan. TRLIA is on this team. The DWR goal for the team is that over the next two (2) years the plan, which includes the safe harbor agreement concept, will be worked out.
- **Major accomplishments planned for the quarter (i.e. tasks to be completed, milestones to be met, meetings to be held or attended, etc.);**
 - **Project Element 1 Feature 1:** All Setback land will be acquired in fee title and all eminent domain cases settled.

- **Project Element 2 Feature 4:** CVFPB issue the encroachment permit for the Vegetated Wave Buffer.
 - **Project Element 2 Feature 4:** CVFPB issue the encroachment permit for the Elderberry Mitigation Area.
 - **Project Element 2 Feature 4:** F&WS via the Corps issue an amended Biological Opinion.
 - **Project Element 6 Feature 3:** TRLIA Board approval of the Setback Area Security/liability plan and Setback Area open to the public.
- **Issues/concerns that have, will, or could affect the schedule or budget, with a recommendation on how to correct the matter:**

- Issue 1: Due to the length of time that may be needed to transfer property to the state, TRLIA's land use responsibilities, which are part of the Feather EIP work, may extend beyond the current agreement completion date (June 30, 2012). To cover this time gap, TRLIA has recommended that DWR and TRLIA jointly create an escrow account and then jointly place the needed funding based on the current agreement cost sharing ratios into this escrow to pay for the TRLIA land maintenance costs until the land is transferred to the State. Procedures can be established for both DWR and TRLIA to sign off on any expenditure from the escrow account. The establishment of the escrow account would allow DWR and TRLIA to manage the property past the agreement time period.

Recommended Resolution: DWR agree to the establishment of the escrow account.

- Issue 2: The CVFPB encroachment permit application for the Elderberry Mitigation Area may not be approved by the CVFPB since there is no safe harbor agreement for elderberry maintenance in the Feather River floodway. DWR has established a Lower Feather River Corridor Management team that consists of local, state, and federal stakeholder to develop a Lower Feather River Corridor Management Plan. TRLIA is on this team. The DWR goal for the team is that over the next two (2) years the plan, which includes the safe harbor agreement concept, will be worked out. The two year timeframe for the plan to be completed does not meet TRLIA needs for Feather Setback Elderberry Area to be completed.

Recommended Resolution: DWR work with TRLIA to develop a plan that will allow the CVFPB approval of an encroachment permit for the Feather River Setback Area Elderberry Mitigation Area prior to the completion of the Lower Feather River Corridor Management Plan.

- **Describe differences between the work to be performed and the work outlined in the Overall Work Plan, including anticipated change orders:**
 - **Project Element 2:** Repair of the Levee Patrol Road was completed in the 10th quarter; the preliminary cost for the repairs is approximately \$400,000. TRLIA is still in the process of review the cost with the contractor. DWR is in the process of reviewing this additional work and at the time of this report has not yet approved this work for state cost share. TRLIA is currently review costs for the construction of the setback “security road” construction. Preliminary costs for this work are estimated to be approximately \$ 410,000.
 - **Project Element 9B:** During the 10th quarter TRLIA submitted a new Project Element, Element 9B to DWR for consideration, which included repair of the Corps constructed concrete-lined V-Ditch north of Pump Station 2 in Site 7 Extension of the Feather River levee. The proposed element consists of the needed Design, Engineering, Construction Management and Construction of the Repair of the V-Ditch. The estimated cost for the Design, Engineering and CM is \$190,000 and the estimated cost of construction is between \$300,000 to \$600,000. TRLIA is not requesting any additional State funding for this work as part of the Overall Work Plan. The budget for this work is planned to come from cost savings associated with the previously approved Segment 1 Crack Repair budget. TRLIA understands DWR is still considering this request. No funding is requested at this time with this work plan. Funding will be requested by TRLIA if the work is approved by DWR.
- **Any litigation, proceedings or claims relating to the Project:**
 - Elements 1 thru 7: None at this time

5. Cost Information by Project Element: TRLIA is submitting this 12th Quarterly Work Plan after the completion of the 10th Quarterly Progress report. The budgets and remaining budgeted expenditures are reflective of actual costs incurred as of the 10th Quarter and estimated costs incurred for the 11th Quarter. As result, the financial information included within this Quarterly Work Plan presents the projected remaining budget as of December 31, 2010 expected in each element taking into consideration projected expenses for the 11th Quarter based on the 11th QWP and actual expenditures as they are known.

- **List of changes planned to Overall Work Plan Budget and revised Overall Work Plan Budget (if needed) :** There are no planned changes to the Overall Work Plan Budget at this time. As indicated

in the 10th Quarterly Progress Report, only one feature has exceeded its Overall Work Plan Budget by greater than 5%. This Feature is Element 7 Feature 6: Insurance. However, in aggregate, including the planned 12th Quarter expenditures, Element 7 does not exceed the amended Overall Work Plan budget by 5%, therefore TRLIA proposes no changes to the Overall Work Plan Budget.

- **Projected costs compared to Overall Work Plan Budget:**

- **Element 1 – Real Estate (Segments 2 & 3):** The Overall Work Plan Budget for Element 1 is \$43.25 million. Through December 2010, TRLIA expects to have expended approximately 94.0% of the revised total budget, about \$40.5 million. In the 12th quarter of the project, TRLIA expects to be resolving eminent domain cases either through settlement or trial. The estimate for these expenses during the 12th Quarter is \$1,290,950. This estimate may vary based upon the timing for completion of court trials and the ultimate outcomes. The remaining funding for this element is anticipated to be used to settle remaining eminent domain cases.
- **Element 8 – Real Estate (Segment 1):** The Overall Work Plan Budget for Element 8 is \$630,272. Through December 2010, TRLIA expects to have expended approximately 15% of the revised total budget, about \$96,453. In the 12th quarter of the project, TRLIA does not expend any additional budget.
- **Element 2 – Segment 2 Construction (Except Tie-Ins):** The overall budget for Element 2 is \$88.76 million. Through the end of the 11th Quarter (December 2010) TRLIA expects to have expended \$86.9 million. During the 12th Quarter TRLIA expects to incur an additional \$744,205. This will predominately be costs associated with legal costs associated with the settlement of eminent domain court cases, and construction management expenses and environmental mitigation (plantings). Including this work, through December 2010, TRLIA expects to have expended approximately 99% of the revised budget for this element.
- **Element 3 –Segment 2 Construction (Tie-Ins):** The overall budget for Element 3 is \$7.76 million. Through the 11th Quarter, December 2010, TRLIA expects to have expended \$7.7 million of expenses. Element 3 is now complete, as such TRLIA has not forecasted any additional expenses in the 12th Quarter. TRLIA will be working to close this element out during the 12th Quarter.
- **Element 4 – Segment 2 Existing Levee Degrade:** The overall budget for Element 4 is \$17.9 million. Through the 11th Quarter, December 2010, expects to have expended \$15.8 million, approximately 87% of the overall budget for this element. During the 11th quarter,

TRLIA expects to have completed to the work and not to incur additional expenses beyond the 11th Quarter.

- **Element 5 – Segment 3 Levee Improvements:** The overall budget for Element 5 is \$11.1 million. Through end of the 11th Quarter (December 2010), TRLIA expects to have expended approximately 99% of the total budget, about \$11.0 million. Through the 12th Quarter (March 2011), TRLIA expects to continue working on the acquisition of required maintenance easement land acquisition.
- **Element 5A – Segment 3 Erosion Site 2:** The overall budget for Element 5A is \$709,000. Through end of the 11th Quarter (December 2010), TRLIA expects to have expended approximately 98% of the total budget, about \$689,000. Through the 12th Quarter (March 2011), TRLIA expects to continue working of the acquisition of required maintenance easement land acquisition.
- **Element 6 – Feather River Land Management:** The overall budget for Element 6 is \$2,350,000. Through the 11th Quarter, December 2010, TRLIA will have expended \$165,000 of this budget. Additional activities related to managing the 1,600 acre setback area will continue this quarter. TRLIA expects to expend approximately \$291,000 on environmental maintenance activities during the quarter.
- **Element 7 - Project Management, Legal, Community Relations, Land Management, and Overhead:** The revised overall budget for Element 7 is \$5.2 million. Through the 11th Quarter (December 2010), TRLIA expects to have expended \$5.2 million or 99% of the total revised budget. Through the 12th Quarter (December 2010), TRLIA expects to expend an additional \$57,000. This will exceed by only a marginal amount (approximately 1%) the Overall Budget for the Element. TRLIA will also be working to adjust the overhead allocation to the Feather River project and adjust the overall budget within available budget for the project.
- **Element 9 – Segment 1 Levee Improvements:** The overall budget for Element 9 is \$12.25 million. Through end of the 11th Quarter (December 2010), TRLIA expects to have expended approximately 98% of the total budget, about \$12.0 million. Through the 12th Quarter (March 2011), TRLIA expects to start working of the acquisition of required maintenance easement land acquisition.
- **Element 9A –Segment 1 Crack Repair:** The overall budget for Element 9A is \$660,000. Through the 11th Quarter, December 2010, TRLIA expects to have expended \$509,000 of expenses. Construction of Element 9A is complete as of the 12th Quarter; as such TRLIA has not forecasted any additional construction expenses in the 12th Quarter. TRLIA will be working to close this element during the 12th Quarter.

- **Proposed Element 9B – Segment 1 V-Ditch Repair:** The overall budget for Element 9B is proposed to be \$790,000 million. Through end of the 11th Quarter (December 2010), TRLIA will not have commenced this item. TRLIA is waiting for DWR approval of the additional work before commencing design efforts.

- **The amount of funds sought from the State and the Amount of Local Funds intended to be expended**

As presented in Item 3 of this 12th Quarter Work Plan:

| Summary | | | | |
|----------------------------------|--------------------|--------------------|--------------------|-----------------------------|
| Description | State Share | Local Share | Total | Local Credit Applied |
| Element 1 & 8 - Land Acquisition | \$1,056,399 | \$234,551 | \$1,290,950 | \$0 |
| Elements 2 through 7, 9A, & 9B | \$926,136 | \$202,037 | \$1,128,173 | \$0 |
| Total | \$1,982,535 | \$436,587 | \$2,419,123 | \$0 |

| Quarterly Summary for Real Estate Activity | |
|--|--------------------|
| State Share Elements 1 & 8 | \$1,056,399 |
| Local Credit Applied Elements 1 & 8 | \$0 |
| Estimated Total Quarterly State Real Estate Funding | \$1,056,399 |

| Quarterly Advance Summary for Non-Real Estate Activity | |
|--|------------------|
| 75% of State Share Elements 2 through 7 & 9A | \$694,602 |
| Prior State Share Underfunded | TBD |
| Total Advance Request of State Share for 11th Quarter [2] | \$694,602 |

[1] Subject to finalized True-Up for 9th and 10th Quarters

The calculation of Total Advance for State Share at Start of 12th Quarter is subject to True-Ups to account for actual expenses incurred in the 9th, 10th Quarters and 11th Quarters. In addition, the State is to take into consideration prior funding received through Real Estate settlements (Danna & Davit cases), Farming Lease Revenue (see Element 6 discussion below), interest earned on State Advance funding (reference the recently submitted 10th QPR), and finally a provision for retention on State funding.

- **Detailed Quarterly Work Plan Budget Forecast**

The following tables present Element and Feature level details for this 10th Quarter Work Plan.

Summary of TRLIA Quarterly Work Plan Budget

For Period January/February/March 2010

SUMMARY ALL ELEMENTS

| Elements and Features | Revised Overall Budget [1] | | | Forecasted Expenses (through September 2010) | | | | Forecasted Remaining Budget | | | Quarterly Forecast | | | Advance | |
|---|----------------------------|---|---------------------|---|---------------------|----------------------|------------------------------------|---|--------------------|--------------------|--------------------|--------------------|------------------|------------------|--|
| | Total | State | Local | Total | State Share | Local Share | Local Share (after credit) | Total | State Share | Local Share | Total | State | Local | State Share | |
| Formula | b | c* | d = b-c | e | f | g | h=e-f-g | i=b-e | j=c-f-g | k=d-h | l | m=lxa | n=l-m | o=m*75% | |
| | | <small>*Based on Overall Workplan</small> | | [2] | [3] | [4] | <small>*Not less than zero</small> | | | | | | | | |
| Quarterly Advance Request | | | | | | | | | | | | | | | |
| Element 2: Segment 2 New Levee | \$88,759,546 | \$73,514,739 | \$15,244,808 | \$86,974,986 | \$6,777,121 | \$65,259,548 | \$14,938,317 | \$1,784,560 | \$1,478,070 | \$306,491 | \$744,205 | \$616,384 | \$127,820 | \$462,288 | |
| Element 3: Segment 2 Levee Tie Ins | \$7,760,052 | \$6,427,232 | \$1,332,820 | \$7,684,448 | \$0 | \$6,364,612 | \$1,319,836 | \$75,604 | \$62,620 | \$12,984 | \$0 | \$0 | \$0 | \$0 | |
| Element 4: Segment 2 Levee Degradation | \$17,916,213 | \$14,839,032 | \$3,077,181 | \$15,576,619 | \$0 | \$12,901,270 | \$0 | \$2,339,594 | \$1,937,762 | \$401,832 | \$0 | \$0 | \$0 | \$0 | |
| Element 5: Segment 3 Levee Improvement | \$11,135,917 | \$7,795,142 | \$3,340,775 | \$11,045,530 | \$3,155,224 | \$4,576,648 | \$3,313,659 | \$90,386 | \$63,270 | \$27,116 | \$7,500 | \$5,250 | \$2,250 | \$3,938 | |
| Element 5A: Segment 3 Erosion Site 2 | \$709,000 | \$496,300 | \$212,700 | \$689,518 | \$0 | \$482,663 | \$206,855 | \$19,482 | \$13,637 | \$5,845 | \$5,000 | \$3,500 | \$1,500 | \$2,625 | |
| Element 6: Land Management | \$2,350,000 | \$1,946,378 | \$403,622 | \$165,014 | \$0 | \$136,672 | \$28,342 | \$2,184,986 | \$1,809,706 | \$375,280 | \$291,349 | \$241,309 | \$50,040 | \$180,981 | |
| Element 7: PM & Overhead | \$5,201,840 | \$3,970,020 | \$1,231,821 | \$5,200,489 | \$1,464,186 | \$2,504,816 | \$1,231,487 | \$1,351 | \$1,017 | \$334 | \$57,119 | \$43,593 | \$13,526 | \$32,695 | |
| Element 9: Segment 1 Levee Improvement | \$12,254,728 | \$8,578,310 | \$3,676,418 | \$12,049,186 | \$987,512 | \$7,446,919 | \$3,614,756 | \$205,542 | \$143,879 | \$61,662 | \$15,000 | \$10,500 | \$4,500 | \$7,875 | |
| Element 9A: Segment 1 Crack Repair | \$660,000 | \$462,000 | \$198,000 | \$508,971 | \$0 | \$356,280 | \$152,691 | \$151,029 | \$105,720 | \$45,309 | \$8,000 | \$5,600 | \$2,400 | \$4,200 | |
| Subtotal Elements 2 through 9A | \$146,747,296 | \$118,029,151 | \$28,718,145 | \$139,894,762 | \$12,384,043 | \$100,029,426 | \$24,805,943 | \$6,852,534 | \$5,615,682 | \$1,236,852 | | | | | |
| | | | | | | | \$112,413,469 | | | | | | | | |
| Element 9B: Feather River Segment 1 V-Ditch R | \$790,000 | \$553,000 | \$237,000 | \$0 | \$0 | \$0 | \$0 | \$790,000 | \$553,000 | \$237,000 | \$0 | \$0 | \$0 | \$0 | |
| | | | | | | | | Totals for Quarter Eligible for 75% Advance of State Share | | | \$1,128,173 | \$926,136 | \$202,037 | \$694,602 | |
| Real Estate Forecast for Quarter | | | | | | | | | | | | | | | |
| | | | | Cumulative Estimated Expenses (through December) | | | | | | | | | | | |
| Element 1: Land Acquisition | \$43,252,165 | \$35,763,231 | \$7,488,934 | \$40,513,539 | \$3,022,288 | \$30,506,985 | \$6,984,266 | \$2,738,626 | \$2,233,959 | \$504,668 | \$1,290,950 | \$1,056,399 | \$234,551 | | |
| Element 8: Segment 1 Land Acquisition | \$630,272 | \$441,190 | \$189,082 | \$96,453 | \$47,728 | \$19,789 | \$28,936 | \$533,819 | \$373,673 | \$160,146 | \$0 | \$0 | \$0 | | |
| Subtotal Real Estate Forecast | \$43,882,437 | \$36,204,422 | \$7,678,015 | \$40,609,992 | \$3,070,016 | \$30,526,774 | \$7,013,202 | \$3,272,445 | \$2,607,632 | \$664,813 | \$1,290,950 | \$1,056,399 | \$234,551 | | |
| Total Elements 1 through 9A | \$190,629,733 | \$154,233,573 | \$36,396,160 | \$180,504,754 | \$15,454,059 | \$130,556,200 | \$31,819,145 | \$10,124,979 | \$8,223,314 | \$1,901,665 | \$2,419,123 | \$1,982,535 | \$436,587 | | |

Local Credit Reconciliation

| | |
|---|--|
| Total Local Share of Expenses this Quarter | \$202,037 (From Above) |
| Total Approved Local Credit | \$15,454,060 (Based on Approval Letter) |
| Use of Local Credit | |
| Use of Local Credit for Real Estate to Date | -\$5,282,078 |
| Payments of Credit w/ 1st Quarterly Advance (Per Invoice Advance - 1) | -\$2,461,666 |
| Payments of Credit w/ 2nd Quarterly Advance (Per Revised Invoice Advance-2) | -\$1,469,507 |
| Payments of Credit w/2nd Quarter True-Up | -\$3,812,451 |
| Payments of Credit w/3rd Quarterly Advance | -\$567,189 |
| Payments of Credit w/3rd Quarterly Advance (Update based on Addtl. Costs) | -\$825,928 |
| Payments in Process for 9th and 10th Quarter Progress Reports | -\$1,035,241 |
| Use of Local Credit | -\$15,454,060 |
| Total Local Credit Used | -\$15,454,060 |
| Remaining Local Credit | \$0 |
| Requested Local Credit to be Paid with Advance | \$0 (No Local Credit Remaining) |

12QSumm

[1] Revised per the 11th QWP submitted September 23, 2010.

[2] Reflects costs incurred through submitted 10th QPR (September '10) with estimates of expenses forecasted in 11th QWP. Minor adjustments are made as necessary for actual expenses incurred and schedule changes in 11th Qtr.

[3] Amount paid from credit.

[4] Represents State Share of actual expenses through September plus forecasted amount (ref. Note 2).

TRLIA Quarterly Work Plan Budget

For Period January/February/March 2010

ELEMENT 1

| Elements and Features | State Share Percentage | Revised Overall Budget [1] | | | Cumulative Expenses (through Dec 2010) | | | | Forecasted Remaining Budget | | | % of Total Budget Remaining | 12th Quarterly Forecast | | | % of Remaining Budget |
|--|------------------------|----------------------------|---------------------|---|--|---------------------|---------------------|--------------------|-----------------------------|--------------------|------------------|-----------------------------|-------------------------|--------------------|------------------|-----------------------|
| | | Total | State | Local | Total | State Share Amounts | | Local Share | Total | State Share | Local Share | | Total | State | Local | |
| | | a | b | c* <small>*Based on Overall Workplan</small> | d = b-c | e | Credit f | Payment g | h=e-f-g | i=b-e | j=c-f-g | | k=d-h | l | m=lxa | |
| Formula | | | | [2] | [3] | [4] | | | | | | | | | | |
| Element 1: Feather River EIP Land Acquisition (see real estate Acquisition Plan) | | | | | | | | | | | | | | | | |
| Feature 1 - Feather Segment 2 | 82.8246% | \$42,782,743 | \$35,434,636 | \$7,348,107 | \$40,311,609 | \$2,983,248 | \$30,404,674 | \$6,923,687 | \$2,471,134 | \$2,046,714 | \$424,420 | 6% | \$1,190,950 | \$986,399 | \$204,551 | 48% |
| Feature 2 - Feather Segment 3 | 70.0000% | \$469,422 | \$328,595 | \$140,827 | \$201,930 | \$39,040 | \$102,311 | \$60,579 | \$267,492 | \$187,245 | \$80,248 | 57% | \$100,000 | \$70,000 | \$30,000 | 37% |
| Subtotal Element 1 | | \$43,252,165 | \$35,763,231 | \$7,488,934 | \$40,513,539 | \$3,022,288 | \$30,506,985 | \$6,984,266 | \$2,738,626 | \$2,233,959 | \$504,668 | 6% | \$1,290,950 | \$1,056,399 | \$234,551 | 47% |

12QElem1

[1] Revised per the 11th QWP submitted September 23, 2010.

[2] Reflects costs incurred through submitted 10th QPR (September '10) with estimates of expenses forecasted in 11th QWP. Minor adjustments are made as necessary for actual expenses incurred and schedule changes in 11th Qtr.

[3] Amount paid from credit.

[4] Represents State Share of actual expenses through September plus forecasted amount (ref. Note 2).

TRLIA Quarterly Work Plan Budget

For Period January/February/March 2010

ELEMENT 8

| Elements and Features | State Share Percentage | Revised Overall Budget [1] | | | Cumulative Expenses (through Dec 2010) | | | Forecasted Remaining Budget | | | % of Total Budget Remaining | 12th Quarterly Forecast | | | % of Remaining Budget | |
|--|------------------------|----------------------------|-------------------------------|------------------|--|---------------------|-----------------|-----------------------------|------------------|------------------|-----------------------------|-------------------------|------------|------------|-----------------------|-----------|
| | | Total | State | Local | Total | State Share Amounts | | Local Share | Total | State Share | | Local Share | Total | State | | Local |
| | | a | b | c* | d = b-c | e | Credit f | Payment g | h=e-f-g | i=b-e | | j=c-f-g | k=d-h | l | | m=lxa |
| <i>Formula</i> | | | *Based on Overall Workplan | | [2] | [3] | [4] | | | | | | | | | |
| Element 8: Segment 1 Feather River EIP Land Acquisition | | | | | | | | | | | | | | | | |
| Feature 1 - Feather Segment 1 | 70.0000% | \$630,272 | \$441,190 | \$189,082 | \$96,453 | \$47,728 | \$19,789 | \$28,936 | \$533,819 | \$373,673 | \$160,146 | 85% | \$0 | \$0 | \$0 | 0% |
| Subtotal Element 8 | | \$630,272 | \$441,190 | \$189,082 | \$96,453 | \$47,728 | \$19,789 | \$28,936 | \$533,819 | \$373,673 | \$160,146 | 85% | \$0 | \$0 | \$0 | 0% |

12QElem1

[1] Revised per the 11th QWP submitted September 23, 2010.

[2] Reflects costs incurred through submitted 10th QPR (September '10) with estimates of expenses forecasted in 11th QWP. Minor adjustments are made as necessary for actual expenses incurred and schedule changes in 11th Qtr.

[3] Amount paid from credit.

[4] Represents State Share of actual expenses through September plus forecasted amount (ref. Note 2).

TRLIA Quarterly Work Plan Budget

For Period January/February/March 2010

ELEMENT 2

| Elements and Features | State Share Percentage | Revised Overall Budget [1] | | | Cumulative Expenses (through Dec 2010) | | | Forecasted Remaining Budget | | | % of Total Budget Remaining | 12th Quarterly Forecast | | | % of Remaining Budget | |
|--|------------------------|----------------------------|---------------------|---------------------|--|--------------------|---------------------|-----------------------------|--------------------|--------------------|-----------------------------|-------------------------|------------------|------------------|-----------------------|------------|
| | | Total | State | Local | Total | State Share | | Local Share | Total | State Share | | Local Share | Total | State | | Local |
| | | a | b | c* | d = b-c | e | Credit f | Payments g | h=e-f-g | i=b-e | | j=c-f-g | k=d-h | l | | m=lx |
| Formula | | | | [2] | [3] | [4] | *Not less than zero | | | | | | | | | |
| Element 2: Feather River Segment 2 new levee | | | | | | | | | | | | | | | | |
| (Excludes Levee Tie Ins and Existing Levee Degradation) | | | | | | | | | | | | | | | | |
| 2.1.1: Design | 82.8246% | \$6,492,466 | \$5,377,359 | \$1,115,107 | \$6,504,448 | \$4,533,871 | \$853,410 | \$1,117,166 | -\$11,982 | -\$9,923 | -\$2,059 | 0% | \$0 | \$0 | \$0 | 0% |
| 2.1.2: Permitting | 82.8246% | \$2,745,659 | \$2,274,081 | \$471,578 | \$2,761,067 | \$1,204,454 | \$1,082,388 | \$474,225 | -\$15,408 | -\$12,762 | -\$2,646 | -1% | \$50,000 | \$41,412 | \$8,588 | -325% |
| 2.1.3: Right of Way Support | 82.8246% | \$5,648,380 | \$4,678,248 | \$970,132 | \$5,360,306 | \$940,436 | \$3,499,215 | \$920,655 | \$288,074 | \$238,597 | \$49,477 | 5% | \$233,000 | \$192,981 | \$40,019 | 81% |
| 2.2: Construction Management | 82.8246% | \$7,269,051 | \$6,020,563 | \$1,248,489 | \$7,227,921 | \$14,362 | \$5,972,134 | \$1,241,426 | \$41,130 | \$34,067 | \$7,063 | 1% | \$7,500 | \$6,212 | \$1,288 | 18% |
| 2.3 Construction of Setback | | | | | | | | | | | | | | | | |
| 2.3.1: Foundation | 82.8246% | \$23,525,485 | \$19,484,889 | \$4,040,596 | \$23,591,361 | \$0 | \$19,539,447 | \$4,051,915 | -\$65,876 | -\$54,557 | -\$11,319 | 0% | \$0 | \$0 | \$0 | 0% |
| 2.3.2: Embankment | 82.8246% | \$34,248,507 | \$28,366,189 | \$5,882,318 | \$33,799,551 | \$42,486 | \$27,951,851 | \$5,805,214 | \$448,956 | \$371,852 | \$77,104 | 1% | \$0 | \$0 | \$0 | 0% |
| 2.3.3: Relocation of PG&E Fac. | 82.8246% | \$2,611,894 | \$2,163,291 | \$448,603 | \$2,605,433 | \$41,412 | \$2,116,527 | \$447,494 | \$6,461 | \$5,352 | \$1,109 | 0% | \$0 | \$0 | \$0 | 0% |
| 2.4: Environmental & Cultural Mitigation | | | | | | | | | | | | | | | | |
| 2.4.1: Mitigation & Restoration | 82.8246% | \$5,700,000 | \$4,721,002 | \$978,998 | \$5,054,593 | \$99 | \$4,186,346 | \$868,147 | \$645,407 | \$534,557 | \$110,851 | 11% | \$443,705 | \$367,497 | \$76,208 | 69% |
| 2.4.2: Cultural Mitigation/Sectio | 82.8246% | \$350,000 | \$289,886 | \$60,114 | \$35,366 | \$0 | \$29,292 | \$6,074 | \$314,634 | \$260,594 | \$54,040 | 90% | \$0 | \$0 | \$0 | 0% |
| 2.5: Operation and Maintenance | 82.8246% | \$168,103 | \$139,231 | \$28,872 | \$34,940 | \$0 | \$28,939 | \$6,001 | \$133,164 | \$110,292 | \$22,871 | 79% | \$10,000 | \$8,282 | \$1,718 | 8% |
| Subtotal Element 2 | | \$88,759,546 | \$73,514,739 | \$15,244,808 | \$86,974,986 | \$6,777,121 | \$65,259,548 | \$14,938,317 | \$1,784,560 | \$1,478,070 | \$306,491 | 2% | \$744,205 | \$616,384 | \$127,820 | 42% |

12QElem2

[1] Revised per the 11th QWP submitted September 23, 2010.

[2] Reflects costs incurred through submitted 10th QPR (September '10) with estimates of expenses forecasted in 11th QWP. Minor adjustments are made as necessary for actual expenses incurred and schedule changes in 11th Qtr.

[3] Amount paid from credit.

[4] Represents State Share of actual expenses through September plus forecasted amount (ref. Note 2).

TRLIA Quarterly Work Plan Budget

For Period January/February/March 2010

ELEMENT 3

| Elements and Features | State Share Percentage | Revised Overall Budget [1] | | | Cumulative Expenses (through Dec 2010) | | | Forecasted Remaining Budget | | | % of Total Budget Remaining | 12th Quarterly Forecast | | | % of Remaining Budget | |
|---|------------------------|----------------------------|---|--------------------|--|-------------|--------------------|------------------------------------|------------------------|-----------------|-----------------------------|-------------------------|------------|------------|-----------------------|-----------|
| | | Total | State | Local | Total | State Share | | Local Share | Total | State Share | | Local Share | Total | State | | Local |
| | | a | b | c* | d = b-c | e | Credit f | Payments g | (after credit) h=e-f-g | i=b-e | | j=c-f-g | k=d-h | l | | m=lxa |
| <i>Formula</i> | | | <small>*Based on Overall Workplan</small> | | [2] | [3] | [4] | <small>*Not less than zero</small> | | | | | | | | |
| Element 3: Feather River Segment 2 Levee Tie Ins | | | | | | | | | | | | | | | | |
| 3.1.1: Foundation | 82.8246% | \$5,149,347 | \$4,264,926 | \$884,421 | \$5,146,426 | \$0 | \$4,262,505 | \$883,920 | \$2,921 | \$2,420 | \$501 | 0% | \$0 | \$0 | \$0 | 0% |
| 3.1.2: Embankment | 82.8246% | \$2,610,705 | \$2,162,306 | \$448,399 | \$2,538,022 | \$0 | \$2,102,106 | \$435,916 | \$72,683 | \$60,200 | \$12,483 | 3% | \$0 | \$0 | \$0 | 0% |
| Subtotal Element 3 | | \$7,760,052 | \$6,427,232 | \$1,332,820 | \$7,684,448 | \$0 | \$6,364,612 | \$1,319,836 | \$75,604 | \$62,620 | \$12,984 | 1% | \$0 | \$0 | \$0 | 0% |

12QElem3

[1] Revised per the 11th QWP submitted September 23, 2010.

[2] Reflects costs incurred through submitted 10th QPR (September '10) with estimates of expenses forecasted in 11th QWP. Minor adjustments are made as necessary for actual expenses incurred and schedule changes in 11th Qtr.

[3] Amount paid from credit.

[4] Represents State Share of actual expenses through September plus forecasted amount (ref. Note 2).

TRLIA Quarterly Work Plan Budget

For Period January/February/March 2010

ELEMENT 4

| Elements and Features | State Share Percentage | Revised Overall Budget [1] | | | Cumulative Expenses (through Dec 2010) | | | Forecasted Remaining Budget | | | % of Total Budget Remaining | 12th Quarterly Forecast | | | % of Remaining Budget | |
|---|------------------------|----------------------------|---|--------------------|--|-------------|---------------------|------------------------------------|------------------------------------|--------------------|-----------------------------|-------------------------|------------|------------|-----------------------|-----------|
| | | Total | State | Local | Total | State Share | | Local Share | Total | State Share | | Local Share | Total | State | | Local |
| | | a | b | c* | d = b-c | e | Credit f | Payments g | Local Share (after credit) h=e-f-g | i=b-e | | j=c-f-g | k=d-h | l | | m=lx |
| <i>Formula</i> | | | <small>*Based on Overall Workplan</small> | | [2] | [3] | [4] | <small>*Not less than zero</small> | | | | | | | | |
| Element 4: Feather River Segment 2 Levee Degradation | | | | | | | | | | | | | | | | |
| 4.1: Construction | 82.8246% | \$17,916,213 | \$14,839,032 | \$3,077,181 | \$15,576,619 | \$0 | \$12,901,270 | \$2,675,349 | \$2,339,594 | \$1,937,762 | \$401,832 | 13% | \$0 | \$0 | \$0 | 0% |
| Subtotal Element 4 | | \$17,916,213 | \$14,839,032 | \$3,077,181 | \$15,576,619 | \$0 | \$12,901,270 | \$0 | \$2,339,594 | \$1,937,762 | \$401,832 | 13% | \$0 | \$0 | \$0 | 0% |

12QElem4

[1] Revised per the 11th QWP submitted September 23, 2010.

[2] Reflects costs incurred through submitted 10th QPR (September '10) with estimates of expenses forecasted in 11th QWP. Minor adjustments are made as necessary for actual expenses incurred and schedule changes in 11th Qtr.

[3] Amount paid from credit.

[4] Represents State Share of actual expenses through September plus forecasted amount (ref. Note 2).

TRLIA Quarterly Work Plan Budget

For Period January/February/March 2010

ELEMENT 5

| Elements and Features | State Share Percentage | Revised Overall Budget [1] | | | Cumulative Expenses (through Dec 2010) | | | Forecasted Remaining Budget | | | % of Total Budget Remaining | 12th Quarterly Forecast | | | % of Remaining Budget | |
|---|------------------------|----------------------------|---|--------------------|--|--------------------|--------------------|--|-----------------|-----------------|-----------------------------|-------------------------|----------------|----------------|-----------------------|-----------|
| | | Total | State | Local | Total | State Share | Local Share | Total | State Share | Local Share | | Total | State | Local | | |
| Formula | a | b | c* <small>*Based on Overall Workplan</small> | d = b-c | e | Credit f | Payments g | Local Share (after credit) h=e-f-g | i=b-e | j=c-f-g | k=d-h | | l | m=lxa | n=l-m | |
| | | | | | [2] | [3] | [4] | <small>*Not less than zero</small> | | | | | | | | |
| Element 5: Feather River Segment 3 levee improvement | | | | | | | | | | | | | | | | |
| 5.1.1: Design | 70.0000% | \$915,083 | \$640,558 | \$274,525 | \$913,761 | \$582,099 | \$57,534 | \$274,128 | \$1,322 | \$925 | \$396 | 0% | \$0 | \$0 | \$0 | 0% |
| 5.1.2: Permitting | 70.0000% | \$203,096 | \$142,167 | \$60,929 | \$199,015 | \$91,124 | \$48,187 | \$59,704 | \$4,081 | \$2,857 | \$1,224 | 2% | \$0 | \$0 | \$0 | 0% |
| 5.1.3: Right of Way Support | 70.0000% | \$343,821 | \$240,674 | \$103,146 | \$304,313 | \$136,399 | \$76,620 | \$91,294 | \$39,508 | \$27,655 | \$11,852 | 11% | \$7,500 | \$5,250 | \$2,250 | 19% |
| 5.2: Construction Management | 70.0000% | \$1,125,663 | \$787,964 | \$337,699 | \$1,116,845 | \$438,350 | \$343,441 | \$335,054 | \$8,818 | \$6,172 | \$2,645 | 1% | \$0 | \$0 | \$0 | 0% |
| 5.3: Construction | 70.0000% | \$8,519,203 | \$5,963,442 | \$2,555,761 | \$8,509,913 | \$1,907,252 | \$4,049,688 | \$2,552,974 | \$9,289 | \$6,502 | \$2,787 | 0% | \$0 | \$0 | \$0 | 0% |
| 5.4: O&M Manual | 70.0000% | \$29,052 | \$20,336 | \$8,716 | \$1,683 | \$0 | \$1,178 | \$505 | \$27,369 | \$19,158 | \$8,211 | 94% | \$0 | \$0 | \$0 | 0% |
| Subtotal Element 5 | | \$11,135,917 | \$7,795,142 | \$3,340,775 | \$11,045,530 | \$3,155,224 | \$4,576,648 | \$3,313,659 | \$90,386 | \$63,270 | \$27,116 | 1% | \$7,500 | \$5,250 | \$2,250 | 8% |

12QElem5

[1] Revised per the 11th QWP submitted September 23, 2010.

[2] Reflects costs incurred through submitted 10th QPR (September '10) with estimates of expenses forecasted in 11th QWP. Minor adjustments are made as necessary for actual expenses incurred and schedule changes in 11th Qtr.

[3] Amount paid from credit.

[4] Represents State Share of actual expenses through September plus forecasted amount (ref. Note 2).

TRLIA Quarterly Work Plan Budget

For Period January/February/March 2010

ELEMENT 5A

| Elements and Features | State Share Percentage | Revised Overall Budget [1] | | | Cumulative Expenses (through Dec 2010) | | | | Forecasted Remaining Budget | | | % of Total Budget Remaining | 12th Quarterly Forecast | | | % of Remaining Budget |
|---|------------------------|----------------------------|---|------------------|--|-------------|------------------|------------------------------------|-----------------------------|-----------------|----------------|-----------------------------|-------------------------|----------------|----------------|-----------------------|
| | | Total | State | Local | Total | State Share | | Local Share | Total | State Share | Local Share | | Total | State | Local | |
| | | | | | | Credit | Payments | | | | | | | | | |
| Formula | a | b | c* <small>*Based on Overall Workplan</small> | d = b-c | e | f | g | h=e-f-g | i=b-e | j=c-f-g | k=d-h | l | m=lxa | n=l-m | | |
| | | | | | [2] | [3] | [4] | <small>*Not less than zero</small> | | | | | | | | |
| Element 5A: Feather River Segment 3 Erosion Site 2 | | | | | | | | | | | | | | | | |
| 5A.1.1 - Design | 70.0000% | \$54,247 | \$37,973 | \$16,274 | \$53,962 | \$0 | \$37,773 | \$16,189 | \$285 | \$200 | \$86 | 1% | \$0 | \$0 | \$0 | 0% |
| 5A.1.2 - Permitting | 70.0000% | \$112,302 | \$78,611 | \$33,691 | \$111,341 | \$0 | \$77,939 | \$33,402 | \$961 | \$672 | \$288 | 1% | \$0 | \$0 | \$0 | 0% |
| 5A.1.3 - ROW Support | 70.0000% | \$20,000 | \$14,000 | \$6,000 | \$10,830 | \$0 | \$7,581 | \$3,249 | \$9,170 | \$6,419 | \$2,751 | 46% | \$5,000 | \$3,500 | \$1,500 | 55% |
| 5A.2 - Construction Managemer | 70.0000% | \$39,239 | \$27,467 | \$11,772 | \$31,634 | \$0 | \$22,144 | \$9,490 | \$7,605 | \$5,323 | \$2,281 | 19% | \$0 | \$0 | \$0 | 0% |
| 5A.3 - Construction | 70.0000% | \$482,212 | \$337,548 | \$144,664 | \$481,751 | \$0 | \$337,226 | \$144,525 | \$461 | \$323 | \$138 | 0% | \$0 | \$0 | \$0 | 0% |
| 5A.4 - O&M manual addendum | 70.0000% | \$1,000 | \$700 | \$300 | \$0 | \$0 | \$0 | \$0 | \$1,000 | \$700 | \$300 | 100% | \$0 | \$0 | \$0 | 0% |
| Subtotal Element 5A | | \$709,000 | \$496,300 | \$212,700 | \$689,518 | \$0 | \$482,663 | \$206,855 | \$19,482 | \$13,637 | \$5,845 | 3% | \$5,000 | \$3,500 | \$1,500 | 26% |

**12QElem5A*

[1] Revised per the 11th QWP submitted September 23, 2010.

[2] Reflects costs incurred through submitted 10th QPR (September '10) with estimates of expenses forecasted in 11th QWP. Minor adjustments are made as necessary for actual expenses incurred and schedule changes in 11th Qtr.

[3] Amount paid from credit.

[4] Represents State Share of actual expenses through September plus forecasted amount (ref. Note 2).

TRLIA Quarterly Work Plan Budget

For Period January/February/March 2010

ELEMENT 6

| Elements and Features | State Share Percentage | Revised Overall Budget [1] | | | Cumulative Expenses (through Dec 2010) | | | Forecasted Remaining Budget | | | % of Total Budget Remaining | 12th Quarterly Forecast | | | % of Remaining Budget | |
|---|------------------------|----------------------------|---|------------------|--|-------------|------------------|--|--------------------|--------------------|-----------------------------|-------------------------|------------------|------------------|-----------------------|------------|
| | | Total | State | Local | Total | State Share | Local Share | Total | State Share | Local Share | | Total | State | Local | | |
| Formula | a | b | c* <small>*Based on Overall Workplan</small> | d = b-c | e | Credit f | Payments g | Local Share (after credit) h=e-f-g | i=b-e | j=c-f-g | k=d-h | l | m=lxa | n=l-m | | |
| | | | | | [2] | [3] | [4] | <small>*Not less than zero</small> | | | | | | | | |
| Element 6: Feather River Land Management | | | | | | | | | | | | | | | | |
| Feature 6.1: Env. Maintenance | 82.8246% | \$150,000 | \$124,237 | \$25,763 | \$112,914 | \$0 | \$93,520 | \$19,393 | \$37,086 | \$30,717 | \$6,370 | 25% | \$0 | \$0 | \$0 | 0% |
| Feature 6.2: Lease Back | 82.8246% | \$50,000 | \$41,412 | \$8,588 | \$780 | \$0 | \$646 | \$134 | \$49,220 | \$40,766 | \$8,454 | 98% | \$0 | \$0 | \$0 | 0% |
| Feature 6.3: Land Maintenance | 82.8246% | \$2,150,000 | \$1,780,729 | \$369,271 | \$51,320 | \$0 | \$42,506 | \$8,814 | \$2,098,680 | \$1,738,223 | \$360,457 | 98% | \$291,349 | \$241,309 | \$50,040 | 14% |
| Subtotal Element 6 | | \$2,350,000 | \$1,946,378 | \$403,622 | \$165,014 | \$0 | \$136,672 | \$28,342 | \$2,184,986 | \$1,809,706 | \$375,280 | 93% | \$291,349 | \$241,309 | \$50,040 | 13% |

12QElem6

[1] Revised per the 11th QWP submitted September 23, 2010.

[2] Reflects costs incurred through submitted 10th QPR (September '10) with estimates of expenses forecasted in 11th QWP. Minor adjustments are made as necessary for actual expenses incurred and schedule changes in 11th Qtr.

[3] Amount paid from credit.

[4] Represents State Share of actual expenses through September plus forecasted amount (ref. Note 2).

TRLIA Quarterly Work Plan Budget

For Period January/February/March 2010

ELEMENT 7

| Elements and Features | State Share Percentage | Revised Overall Budget [1] | | | Cumulative Expenses (through Dec 2010) | | | | Forecasted Remaining Budget | | | % of Total Budget Remaining | 12th Quarterly Forecast | | | % of Remaining Budget |
|---|------------------------|----------------------------|---|--------------------|--|--------------------|--------------------|------------------------------------|-----------------------------|----------------|--------------|-----------------------------|-------------------------|-----------------|-----------------|-----------------------|
| | | Total | State | Local | Total | State Share | | Local Share | Total | State Share | Local Share | | Total | State | Local | |
| | | a | b | c* | d = b-c | e | Credit f | Payments g | (after credit) h=e-f-g | i=b-e | j=c-f-g | | k=d-h | l | m=lx | |
| <i>Formula</i> | | | <small>*Based on Overall Workplan</small> | | [2] | [3] | [4] | <small>*Not less than zero</small> | | | | | | | | |
| Element 7: Project Management, Legal, Community Relations support, Land Management, and Overhead | | | | | | | | | | | | | | | | |
| Feature 7.1: Salaries | 76.3198% | \$1,309,737 | \$999,589 | \$310,148 | \$1,286,932 | \$373,722 | \$608,462 | \$304,748 | \$22,806 | \$17,406 | \$5,400 | 2% | \$21,269 | \$16,233 | \$5,037 | 93% |
| Feature 7.2: Consulting | 76.3198% | \$1,589,571 | \$1,213,143 | \$376,428 | \$1,553,358 | \$461,956 | \$723,564 | \$367,839 | \$36,213 | \$27,623 | \$8,589 | 2% | \$23,633 | \$18,036 | \$5,596 | 65% |
| Feature 7.3: Legal | 76.3198% | \$1,195,497 | \$912,401 | \$283,096 | \$1,153,186 | \$381,323 | \$498,787 | \$273,077 | \$42,311 | \$32,291 | \$10,019 | 4% | \$7,090 | \$5,411 | \$1,679 | 17% |
| Feature 7.4: Travel | 76.3198% | \$9,827 | \$7,500 | \$2,327 | \$8,812 | \$3,933 | \$2,792 | \$2,087 | \$1,015 | \$775 | \$240 | 10% | \$118 | \$90 | \$28 | 12% |
| Feature 7.5: General | 76.3198% | \$350,756 | \$267,696 | \$83,060 | \$307,854 | \$60,919 | \$174,034 | \$72,900 | \$42,902 | \$32,743 | \$10,159 | 12% | \$4,727 | \$3,607 | \$1,119 | 11% |
| Feature 7.6: Insurance | 76.3198% | \$701,375 | \$535,288 | \$166,087 | \$862,911 | \$174,173 | \$484,399 | \$204,339 | -\$161,536 | -\$123,284 | -\$38,252 | -23% | \$0 | \$0 | \$0 | 0% |
| Feature 7.7: Travel/Vehicle | 76.3198% | \$26,273 | \$20,051 | \$6,221 | \$20,746 | \$6,230 | \$9,603 | \$4,913 | \$5,527 | \$4,218 | \$1,309 | 21% | \$283 | \$216 | \$67 | 5% |
| Feature 7.8: Memberships | 76.3198% | \$18,804 | \$14,351 | \$4,453 | \$6,691 | \$1,930 | \$3,176 | \$1,584 | \$12,113 | \$9,245 | \$2,868 | 64% | \$0 | \$0 | \$0 | 0% |
| Subtotal Element 7 | | \$5,201,840 | \$3,970,020 | \$1,231,821 | \$5,200,489 | \$1,464,186 | \$2,504,816 | \$1,231,487 | \$1,351 | \$1,017 | \$334 | 0% | \$57,119 | \$43,593 | \$13,526 | 4227% |

12QElem7

[1] Revised per the 11th QWP submitted September 23, 2010.

[2] Reflects costs incurred through submitted 10th QPR (September '10) with estimates of expenses forecasted in 11th QWP. Minor adjustments are made as necessary for actual expenses incurred and schedule changes in 11th Qtr.

[3] Amount paid from credit.

[4] Represents State Share of actual expenses through September plus forecasted amount (ref. Note 2).

- **A discussion on how the projected schedule compares to original or last reported schedule:**
 - Project Element 9A Feature 1.1: Added time for Crack Monitoring
 - Project Element 9B & Features 1 & 2 – Segment 1 V-Ditch Repair: Removed schedule pending DWR approval of Project Element

Attachments

1. Permit Status Update for Project Element 2, 3, 4, 5, 5A, 9, 9A, and 9B

**Attachment 1 – Updated Permit Tables for Project Elements 2, 3, 4, 5,
5A, 9, 9A, & 9B**

| <u>Project Element 2</u> Applicable Permit and Environmental Documentation (refer to exhibit A of overall TRLIA work plan) | | | |
|---|---|--------------------|--|
| PERMITTING AGENCY | PERMIT | ACTION DONE | STATUS/COMMENTS |
| The Central Valley Flood Protection Board | Encroachment Permits | Yes | The CVFPB General Manager issued a phased permit (#18227) on April 7, 2008 that allows construction in non-federal jurisdictional areas |
| California Central Valley Flood Protection Board | Encroachment Permit – Vegetated Wave Buffer | Pending | Application submitted in September 2009; Revised application submitted in November 2010 – Anticipate CVFPB approval in 12 th quarter (Jan 2011) |
| California Central Valley Flood Protection Board | Encroachment Permit – Elderberry Mitigation Area | Pending | Application submitted in October 2010 – Anticipate CVFPB approval in 12 th quarter (Jan – Mar 2011) |
| U.S. Fish and Wildlife Service | Endangered Species Act Compliance | Yes | Biological Opinion was approved on August 28, 2008 |
| U.S. Fish and Wildlife Service | Endangered Species Act Compliance | Pending | Reinitiated Elderberry Consultation on 9/13/2010 via Corps. Anticipate amended B.O. in 12 th quarter (Jan – Mar 2011). Additional elderberry shrubs were impacted that were not identified in original B.O. |
| Native American Heritage Commission (NAHC) | Evaluation of effects on Native American burials or artifacts | Yes | Coordination with the NAHC was completed and MOA signed by all parties, on August 13, 2008 |
| RWQCB, Region 5 | National Pollution Discharge Elimination System (NPDES) Permit per Section 402 of the Clean Water Act | Yes | A NPDES permit (WDID # 5S5BC348901) was issued on 9/18/07 for Segments 1, 2, and 3. |
| Feather River Air Quality Management District (FRAQMD) | Authority to Construct | Yes | Contractor submitted Fugitive Dust Plan to FRAQMD |
| DFG | Streambed Alteration Agreement | Yes | The final Streambed Alteration Agreement was approved by DFG on January 2, 2008 |

| | | | |
|---------------------------------------|--------------------------------------|---------|--|
| Reclamation District 784 (RD 784) | Encroachment Permit | Yes | RD 784 is one of the project sponsors and coordination with RD 784 regarding levee encroachments is ongoing. RD 784 signed the application for the Central Valley Flood Protection Board encroachment permit with no objections. |
| Yuba County | Grading Permit | Yes | Grading permit was received in May 2008 |
| State Mining and Geology Board (SMGB) | Reclamation Plan | Yes | The Reclamation Plan was approved and SMGB mining permit (No. 91-58-0026) issued for Ella and Platter/JTS Borrow sites on Sept 22, 2009. |
| CEQA | EIR | Yes | EIR certified by the TRLIA board on February 6, 2007 and a Notice of Determination filed with the State Clearinghouse (Number 2006062071) on February 8, 2007 |
| CEQA | EIR Addendum #1 | Yes | EIR addendum for offsite Platter Borrow site |
| CEQA | EIR Addendum #2 | Yes | EIR addendum for Ella offsite borrow site |
| CEQA | EIR Addendum #3 | Pending | EIR addendum for Vegetated Wave Buffer – Anticipate TRLIA Board Approval in January 2011 |
| Section 104 Credit Application | Future federal projects cost Sharing | Yes | CVFPB submitted a request on June 15, 2007 for \$154.3M Section 104 credit to the Sacramento District. |
| Section 104 Credit Approval (N/A) | Future federal projects cost sharing | Yes | At the March 21 CVFPB meeting DWR stated it would waive the need for 104 credits – DWR waiver letter issued on May 2, 2008 |

Project Element 3 Applicable Permit and Environmental Documentation (refer to exhibit A of overall TRLIA work plan)

| PERMITTING AGENCY | PERMIT | Action Done | STATUS/COMMENTS |
|---|----------------------|-------------|---|
| The Central Valley Flood Protection Board | Encroachment Permits | Yes | The CVFPB General Manager issued a phased permit (#18227) on April 7, 2008. The permit has two parts: Part A – Project Element 2 work to be done outside of jurisdictional waters of the U.S., and Part B – Project |

| | | | |
|--|---|---------|---|
| | | | Element 3 work to be within jurisdictional waters of the U.S. |
| U.S. Army Corps of Engineers (Corps) | Section 10 Permit | Yes | Navigable waterways not affected |
| Corps | Section 404 Permit | Yes | Corps of Engineers signed the Feather River Setback Levee Environmental Impact Statement 404 permit Record of Decision on December 8, 2008 and the issued the final Feather River Setback 404 permit on December 15, 2008. |
| Corps | 408 approval of project levee alteration | Yes | Corps of Engineers signed the Feather River Setback Levee Environmental Impact Statement 408 Authorization Record of Decision on December 8, 2008 and issued The Feather River Setback 408 Authorization on December 8, 2008. |
| Corps | Wetlands Delineation | Yes | Completed March 11, 2008 |
| Corps | Wetlands Delineation | Yes | Amended September 30, 2008 |
| Regional Water Quality Control Board (RWQCB); Central Valley Region (Region 5) | Section 401 Water Quality Certification | Yes | The Regional Water Quality Control Board signed the Section 401 Water Quality permit on November 24, 2008. Copy available on the |
| RWQCB, Region 5 | National Pollution Discharge Elimination System (NPDES) Permit per Section 402 of the Clean Water Act | Yes | A NPDES permit (WDID # 5S5BC348901) was issued on 9/18/07 for Segments 1, 2, and 3. |
| Feather River Air Quality Management District (FRAQMD) | Authority to Construct | Yes | Contractor submitted a Fugitive Dust Plan to the FRAQMD prior to initiating construction on Segment 2. |
| U.S. Fish and Wildlife Service | Endangered Species Act Compliance | Yes | Biological Opinion was approved on August 28, 2008 |
| U.S. Fish and Wildlife Service | Endangered Species Act Compliance | Pending | Reinitiated Elderberry Consultation on 9/13/2010 via Corps. Anticipate amended B.O. in 12 th quarter (Jan – Mar 2011). Additional elderberry shrubs were impacted that were not identified in original B.O. |
| National Marine Fisheries Service (NMFS) | Endangered Species Act Compliance | Yes | NMFS sent letter on December 13, 2007 concurring that setback levee is not likely to adversely affect any fish species under NMFS jurisdiction. |
| California Department of Fish and Game (DFG) | California Endangered Species Act | Yes | Section 2081 Permit received in August 2009 |

| | Compliance | | |
|--|---|-----|---|
| DFG | Streambed Alteration Agreement | Yes | The final Streambed Alteration Agreement was approved by DFG on January 2, 2008. |
| California State Lands Commission (SLC) | Encroachment Permit | Yes | All project facilities are outside SLC jurisdiction. |
| California Department of Forestry | Conversion of timberland to other uses. | Yes | No timberland conversion is required for the project. |
| The Resources Agency | Cancellation of Williamson Act Contract | Yes | No Williamson Act contract cancellations are required to implement the project. |
| California Department of Transportation (Caltrans) | Encroachment on or across a State highway | Yes | Project facilities do not encroach onto a State highway. However, construction equipment will likely use State Route 70 (SR 70). Development and implementation of a traffic control plan is being coordinated with Caltrans. |
| Native American Heritage Commission (NAHC) | Evaluation of effects on Native American burials or artifacts | Yes | Coordination with the NAHC was completed and MOA signed by all parties, on August 13, 2008. |
| State Office of Historic Preservation (SHPO) | Evaluation of effects on historic and cultural resources | Yes | Coordination with the SHPO was completed and MOA signed by all parties, on August 13, 2008. |
| Reclamation District 784 (RD 784) | Encroachment Permit | Yes | RD 784 is one of the project sponsors and coordination with RD 784 regarding levee encroachments is ongoing. RD 784 signed the application for the Reclamation Board encroachment permit with no objections. |
| Yuba County | Grading Permit | Yes | Grading permit was received in May 2008 |
| State Mining and Geology Board (SMGB) | Reclamation Plan | Yes | The Reclamation Plan was approved and SMGB mining permit (No. 91-58-0026) issued for Ella and Platter/JTS Borrow sites on Sept 22, 2009. |
| CEQA | EIR | Yes | EIR certified by the TRLIA board on February 6, 2007 and a Notice of Determination filed with the State Clearinghouse (Number 2006062071) on February 8, 2007. |
| NEPA | EIS | Yes | Corps of Engineers Finalized the |

| | | | |
|--------------------|--------------------------------------|-----|--|
| | | | Environmental Impact Statement and signed the Record of Decision on December 8, 2008. |
| Section 104 Credit | Future federal projects cost Sharing | Yes | The Section 104 credit for this Project Element was issued by the Corps on April 3, 2009 |

| Project Element 4 Applicable Permit and Environmental Documentation (refer to exhibit A of overall TRLIA work plan) | | | |
|--|---|--------------------|---|
| PERMITTING AGENCY | PERMIT | Action Done | STATUS/COMMENTS |
| California Central Valley Flood Protection Board | Encroachment Permit | Yes | CVFPB issued permit No 18430 at the July 2009 Board meeting |
| U.S. Army Corps of Engineers (Corps) | Section 10 Permit | Yes | Navigable waterways not affected |
| Corps | Section 404 Permit | Yes | Corps of Engineers signed the Feather River Setback Levee Environmental Impact Statement 404 permit Record of Decision on December 8, 2008 and the issued the final Feather River Setback 404 permit on December 15, 2008. |
| Corps | 408 approval of project levee alteration | Yes | Corps of Engineers signed the Feather River Setback Levee Environmental Impact Statement 408 Authorization Record of Decision on December 8, 2008 and issued The Feather River Setback 408 Authorization on December 8, 2008. |
| Corps | Wetlands Delineation | Yes | Completed March 11, 2008 |
| Corps | Wetlands Delineation | Yes | Amended September 30, 2008 |
| Regional Water Quality Control Board (RWQCB); Central Valley Region (Region 5) | Section 401 Water Quality Certification | Yes | The Regional Water Quality Control Board signed the Section 401 Water Quality permit on November 24, 2008. |
| RWQCB, Region 5 | National Pollution Discharge Elimination System (NPDES) Permit per Section 402 of the Clean Water Act | Yes | A NPDES permit (WDID # 5S5BC348901) was issued on 9/18/07 for Segments 1, 2, and 3. |
| Feather River Air Quality Management District (FRAQMD) | Authority to Construct | Yes | Contractor submitted a Fugitive Dust Plan to the FRAQMD prior to initiating construction on Segment 2. |
| U.S. Fish and Wildlife Service | Endangered Species Act Compliance | Yes | Biological Opinion was approved on August 28, 2008 |

| | | | |
|--|---|---------|---|
| U.S. Fish and Wildlife Service | Endangered Species Act Compliance | Pending | Reinitiated Elderberry Consultation on 9/13/2010 via Corps. Anticipate amended B.O. in 12 th quarter (Jan – Mar 2011). Additional elderberry shrubs were impacted that were not identified in original B.O. |
| National Marine Fisheries Service (NMFS) | Endangered Species Act Compliance | Yes | NMFS sent letter on December 13, 2007 concurring that setback levee is not likely to adversely affect any fish species under NMFS jurisdiction. |
| California Department of Fish and Game (DFG) | California Endangered Species Act Compliance | Yes | Section 2081 Permit received in August 2009 |
| DFG | Streambed Alteration Agreement | Yes | The final Streambed Alteration Agreement was approved by DFG on January 2, 2008. |
| California State Lands Commission (SLC) | Encroachment Permit | Yes | All project facilities are outside SLC jurisdiction. |
| California Department of Forestry | Conversion of timberland to other uses. | Yes | No timberland conversion is required for the project. |
| The Resources Agency | Cancellation of Williamson Act Contract | Yes | No Williamson Act contract cancellations are required to implement the project. |
| California Department of Transportation (Caltrans) | Encroachment on or across a State highway | Yes | Project facilities do not encroach onto a State highway. However, construction equipment will likely use State Route 70 (SR 70). Development and implementation of a traffic control plan is being coordinated with Caltrans. |
| Native American Heritage Commission (NAHC) | Evaluation of effects on Native American burials or artifacts | Yes | Coordination with the NAHC was completed and MOA signed by all parties, on August 13, 2008. |
| State Office of Historic Preservation (SHPO) | Evaluation of effects on historic and cultural resources | Yes | Coordination with the SHPO was completed and MOA signed by all parties, on August 13, 2008. |
| Reclamation District 784 (RD 784) | Encroachment Permit | Yes | RD 784 is one of the project sponsors and coordination with RD 784 regarding levee encroachments is ongoing. RD 784 signed the application for the Reclamation Board encroachment permit with no objections. |
| Yuba County | Grading Permit | Yes | Grading permit was received in |

| | | | |
|---------------------------------------|--------------------------------------|-----|--|
| | | | May 2008 |
| State Mining and Geology Board (SMGB) | Reclamation Plan | Yes | The Reclamation Plan was approved and SMGB mining permit (No. 91-58-0026) issued for Ella and Platter/JTS Borrow sites on Sept 22, 2009. |
| CEQA | EIR | Yes | EIR certified by the TRLIA board on February 6, 2007 and a Notice of Determination filed with the State Clearinghouse (Number 2006062071) on February 8, 2007. |
| NEPA | EIS | Yes | Corps of Engineers Finalized the Feather River Setback Levee Environmental Impact Statement and signed the Record of Decision on December 8, 2008. |
| Section 104 Credit | Future federal projects cost Sharing | Yes | The Section 104 credit for this Project Element was issued by the Corps on April 3, 2009 |

| Project Element 5 Applicable Permit and Environmental Documentation (refer to exhibit A of overall TRLIA work plan) | | | |
|--|--|--------------------|--|
| PERMITTING AGENCY | PERMIT | ACTION DONE | STATUS/COMMENT |
| Central Valley Flood Protection Board (CVFPB) | Encroachment Permit | Yes | Permit No. 18170 BD issued on August 7, 2007. |
| Central Valley Flood Protection Board (CVFPB) | Encroachment Permit | Yes | Permit No. 18170 BD permit modified for seepage berm to provide final fix for cutoff wall trench cave-in, issued on 7/17/08 |
| U.S. Army Corps of Engineers (Corps) | Section 10 Permit | Yes | Navigable waterways not affected |
| Corps | Section 404 Permit | Yes | No jurisdictional features affected. Corps issued "Letter of No Permit Required" on July 23, 2007 |
| Corps | 408 Approval of project levee alteration | Yes | Finding of No Significant Impact (FONSI) issued by Corps of Engineers on July 11, 2007. Corps approved Section 408 alteration on August 2, 2007. |
| Regional Water Quality Control Board (RWQCB); Central Valley Region | Section 401 Water Quality Certification | Yes | No 404 permit triggering 401 compliance. RWQCB sent email on August 15, 2007 verifying that 401 |

| | | | |
|--|---|-----|--|
| (Region 5) | | | certification was not necessary |
| RWQCB, Region 5 | National Pollution Discharge Elimination System (NPDES) Permit per Section 402 of the Clean Water Act | Yes | A NPDES permit (WDID # 5S5BC348901) was issued on 9/18/07. A Storm water Pollution Prevention Plan (SWPPP) has been developed and is being followed. |
| Feather River Air Quality Management District (FRAQMD) | Authority to Construct | Yes | Contractor's Fugitive Dust Plan has been developed and submitted to the FRAQMD. |
| U.S. Fish and Wildlife Service | Endangered Species Act Compliance | Yes | Project design and mitigation measures prevent take of threatened and endangered species. FWS sent a letter on May 7, 2007 agreeing that there were no impacts to any endangered species. |
| National Marine Fisheries Service | Endangered Species Act Compliance | Yes | Project will have no affect on fishery resources and habitats. |
| California Department of Fish and Game (DFG) | California Endangered Species Act Compliance | Yes | Project design and mitigation measures prevent take of threatened and endangered species. |
| DFG | Streambed Alteration Agreement | Yes | All ground disturbances is above the Feather River ordinary high water mark. Neither the bed nor bank of the river will be disturbed. DFG sent letter on May 2, 2007 verifying that a Streambed Alteration Agreement was not required. |
| California State Lands Commission (SLC) | Encroachment Permit | Yes | All ground disturbance is above the Feather River ordinary high water mark and outside SLC jurisdiction. |
| California Department of Forestry | Conversion of timberland to other uses. | Yes | No timberland conversion is required for the project. |
| The Resources Agency | Cancellation of Williamson Act Contract | Yes | No Williamson Act contract cancellations are required to implement the project. |
| California Department of Transportation (Caltrans) | Encroachment on or across a State highway | Yes | Project facilities do not encroach onto a State highway. However, construction equipment will likely use State Route 70 (SR 70). Development and implementation of a traffic control plan is being coordinated with Caltrans. |
| Caltrans | Encroachment on Caltrans property | Yes | A portion of a stability berm encroaches a short distance onto property owned by Caltrans used for |

| | | | |
|--|---|-----|--|
| | | | habitat mitigation. A real estate easement for this berm was obtained from Caltrans. No adverse effects to protected habitats occur. |
| Native American Heritage Commission (NAHC) | Evaluation of effects on Native American burials or artifacts | Yes | Coordination with the NAHC has occurred and no known Native American sites or sensitive areas would be affected by the project |
| State Office of Historic Preservation (SHPO) | Evaluation of effects on historic and cultural resources | Yes | No known sensitive historic or cultural resources would be affected by the project. SHPO sent letter on July 16, 2007 agreeing that no impacts to historic or cultural resources were occurring. |
| Reclamation District 784 (RD 784) | Encroachment Permit | Yes | RD 784 is one of the project sponsors and coordination with RD 784 regarding levee encroachments is ongoing. RD 784 signed the application for a CVFPB encroachment permit |
| Yuba County | Grading Permit | Yes | Yuba County is one of the project sponsors and coordination with the County regarding construction of this project continues. |
| CEQA | EIR Processed for Various Permits | Yes | EIR certified by the TRLIA board on February 6, 2007 and a Notice of Determination filed with the State Clearinghouse (Number 2006062071) on February 8, 2007 |
| CEQA | EIR Addendum # 2 | Yes | EIR addendum for the Seepage berm addition needed to provide the final solution to the cutoff wall trench failure. |
| Section 104 Credit | Future federal projects cost sharing | Yes | \$32.7 M Section 104 credit approved by Corps HQ on August 7, 2007 |

Project Element 5A: Feather River Erosion Site 2

| PERMITTING AGENCY | PERMIT | ACTION DONE | STATUS/COMMENT |
|---------------------------------------|----------------------|--------------------|---|
| Central Valley Flood Protection Board | Encroachment Permits | Yes | Encroachment permit No. 18479 issued on September 10, 2009 |
| Corps | Section 404 Permit | Yes | Obtained Nationwide Permit, application submitted to Corps on June 25, 2009 |
| Corps | Wetlands Delineation | Yes | Delineation submitted to Corps on |

| | | | |
|--|---|-----|---|
| | | | May 27, 2009 |
| Corps | 408 approval of project levee alteration | Yes | Corps does not consider this as eligible under the Section 408 approval given for Segments 1 & 3. Per discussion with the Corps, they will approve work under Section 208 authority when they comment on the CVFPB Encroachment Permit Application. |
| Regional Water Quality Control Board (RWQCB); Central Valley Region (Region 5) | Section 401 Water Quality Certification | Yes | Obtained on July 9, 2009 |
| RWQCB, Region 5 | National Pollution Discharge Elimination System (NPDES) Permit per Section 402 of the Clean Water Act | Yes | TRLIA has a current WDID # 5S5BC348901 that was issued by the Regional Water Quality Control Board. The permit covers Feather River Segments 1, 2, and 3 and encompasses the Erosion Site. This permit is current. |
| Feather River Air Quality Management District (FRAQMD) | Authority to Construct | Yes | Used Documentation provided for Project Element 5 |
| U.S. Fish and Wildlife Service | Endangered Species Act Compliance (Biological Opinion) | Yes | Biological opinion prepared, take avoided, no Incidental Take authorization needed. |
| National Marine Fisheries Service (NMFS) | Endangered Species Act Compliance | Yes | Biological opinion prepared, take avoided, no Incidental Take authorization needed. |
| California Department of Fish and Game (DFG) | California Endangered Species Act Compliance (2081) | Yes | No potential take of State listed species. |
| DFG | Streambed Alteration Agreement | Yes | Obtained on July 9, 2009 |
| Native American Heritage Commission (NAHC) | Evaluation of effects on Native American burials or artifacts | Yes | Cultural resources surveys and consultation with Native American groups have found no evidence of burials or artifacts |
| State Office of Historic Preservation (SHPO) | Evaluation of effects on historic and cultural resources | Yes | Cultural resources surveys and consultation with Native American groups have found no evidence of significant historic or cultural resources |

| | | | |
|---------------------------------------|--------------------------------------|-----|---|
| Reclamation District 784 (RD 784) | Encroachment Permit | Yes | RD 784 is one of the project sponsors and coordination with RD 784 regarding levee encroachments is ongoing. RD 784 signed the application for the Reclamation Board encroachment permit with minor conditions. |
| Yuba County | Grading Permit | Yes | Used Documentation provided for Project Element 5 |
| State Mining and Geology Board (SMGB) | SMARA Permit | Yes | The Reclamation Plan was approved and SMGB mining permit (No. 91-58-0026) issued for Ella and Platter/JTS Borrow sites on Sept 22, 2009. Used Ella Site. |
| CEQA | EIR | Yes | ISIMND certified by TRLIA Board on 10/17/06 |
| NEPA | EIS | Yes | No federal action constituting a NEPA trigger |
| Section 104 Credit | Future federal projects cost sharing | Yes | Work is not eligible for Section 104 Credit because it being accomplished under Section 208 authority and was not approved under Section 408 authority. |

| Project Element 9, 9A & 9B Permit and Environmental Documentation | | | |
|--|---------------------|--------------------|--|
| PERMITTING AGENCY | PERMIT | ACTION DONE | STATUS/COMMENT |
| The Central Valley Flood Protection Board | Encroachment Permit | Yes | Permit No. 18170 BD issued on August 7, 2007. |
| The Central Valley Flood Protection Board | Encroachment Permit | Yes | Permit No. 18170 BD modified for design changes, issued on 7/17/08 |
| U.S. Army Corps of Engineers (Corps) | Section 10 Permit | Yes | Navigable waterways not affected |
| Corps | Section 404 Permit | Yes | No jurisdictional features affected. Corps issued "Letter of No Permit Required" on July 23, 2007. Subsequently, a Nationwide permit was received in July 2008 allowing repairs to sinkholes observed on the |

| | | | |
|--|---|-----|---|
| | | | waterside toe of the existing levee in a reach of the Site 7 Extension segment of levee. |
| Corps | 408 Approval of project levee alteration | Yes | Finding of No Significant Impact (FONSI) issued by Corps of Engineers on July 11, 2007. Corps approved Section 408 alteration on August 2, 2007. Subsequently, water quality certification was received in July 2008 allowing repairs to sinkholes observed on the waterside toe of the existing levee in a reach of the Site 7 Extension segment of levee. |
| Regional Water Quality Control Board (RWQCB); Central Valley Region (Region 5) | Section 401 Water Quality Certification | Yes | No 404 permit triggering 401 compliance. RWQCB sent email on August 15, 2007 verifying that 401 certification was not necessary |
| RWQCB, Region 5 | National Pollution Discharge Elimination System (NPDES) Permit per Section 402 of the Clean Water Act | Yes | A NPDES permit (WDID # 5S5BC348901) was issued on 9/18/07. A Storm water Pollution Prevention Plan (SWPPP) has been developed and is being followed. |
| Feather River Air Quality Management District (FRAQMD) | Authority to Construct | Yes | Contractor's Fugitive Dust Plan has been developed and submitted to the FRAQMD. |
| U.S. Fish and Wildlife Service | Endangered Species Act Compliance | Yes | Project design and mitigation measures prevent take of threatened and endangered species. FWS sent a letter on May 7, 2007 agreeing that there were no impacts to any endangered species. |
| National Marine Fisheries Service | Endangered Species Act Compliance | Yes | Project will have no affect on fishery resources and habitats. |
| California Department of Fish and Game (DFG) | California Endangered Species Act Compliance | Yes | Project design and mitigation measures prevent take of threatened and endangered species. |
| DFG | Streambed Alteration Agreement | Yes | All ground disturbance is above the Feather River ordinary high water mark. Neither the bed nor bank of the river will be disturbed. DFG sent letter on May 2, 2007 verifying that a |

| | | | |
|--|---|-----|--|
| | | | Streambed Alteration Agreement was not required. Subsequently, a streambed authorization permit was received in June 2008 allowing repairs to sinkholes observed on the waterside toe of the existing levee in a reach of the Site 7 Extension segment of levee. |
| California State Lands Commission (SLC) | Encroachment Permit | Yes | All ground disturbance is above the Feather River ordinary high water mark and outside SLC jurisdiction. |
| California Department of Forestry | Conversion of timberland to other uses. | Yes | No timberland conversion is required for the project. |
| The Resources Agency | Cancellation of Williamson Act Contract | Yes | No Williamson Act contract cancellations are required to implement the project. |
| California Department of Transportation (Caltrans) | Encroachment on or across a State highway | Yes | Project facilities do not encroach onto a State highway. However, construction equipment will likely use State Route 70 (SR 70). Development and implementation of a traffic control plan is being coordinated with Caltrans. |
| Caltrans | Encroachment on Caltrans property | Yes | A portion of a stability berm encroaches a short distance onto property owned by Caltrans used for habitat mitigation. A real estate easement for this berm was obtained from Caltrans. No adverse effects to protected habitats occur. |
| Native American Heritage Commission (NAHC) | Evaluation of effects on Native American burials or artifacts | Yes | Coordination with the NAHC has occurred and no known Native American sites or sensitive areas would be affected by the project |
| State Office of Historic Preservation (SHPO) | Evaluation of effects on historic and cultural resources | Yes | No known sensitive historic or cultural resources would be affected by the project. SHPO sent letter on July 16, 2007 agreeing that no impacts to historic or cultural resources were occurring. |
| Reclamation District 784 (RD 784) | Encroachment Permit | Yes | RD 784 is one of the project sponsors and coordination with RD 784 regarding levee encroachments is |

| | | | |
|--------------------|--------------------------------------|-----|---|
| | | | ongoing. RD 784 signed the application for a CVFPB encroachment permit with no objections. |
| Yuba County | Grading Permit | Yes | Yuba County is one of the project sponsors and coordination with the County regarding construction of this project continues. |
| CEQA | EIR Processed for Various Permits | Yes | EIR certified by the TRLIA board on February 6, 2007 and a Notice of Determination filed with the State Clearinghouse (Number 2006062071) on February 8, 2007 |
| CEQA | CEQA Addendum #2 | Yes | EIR addendum for the Water Blanket modifications. |
| Section 104 Credit | Future federal projects cost sharing | Yes | \$32.7 M Section 104 credit approved by Corps HQ on August 7, 2007 |