



TRLIA
10th QUARTERLY WORK PLAN
FOR
FEATHER RIVER LEVEE
IMPROVEMENT PROJECT

1. **10th Quarterly Work Plan for quarter: July 1 – Sept 30, 2010**
2. **Note:** On March 25, 2010 the State Contracting Office (DGS/OLS) approved the Feather River EIP Funding Agreement Amendment and extended the agreement to June 30, 2012. This is the first Quarterly Work Plan since that approval. The modified funding agreement allows the State to provide funding up to \$154.79 million (original amount was \$138.5 million). The modified funding agreement incorporated the following Project Elements into the funding agreement:
 - Element 5A: Feather River Segment 3 Erosion Site 2
 - Element 8: Feather River Segment 1 land acquisition (was Associated Project Element 1)
 - Element 9: Feather River Segment 1 levee improvement (was Associated Project Element 2)
 - Element 9A: Feather River Segment 1 crack repair
3. **Date of Report: April 26, 2010**
4. **10th Quarter Work Plan Summary:**

Summary				
Description	State Share	Local Share	Total	Local Credit Applied
Element 1 & 8 - Land Acquisition	\$1,493,948	\$309,802	\$1,803,750	\$0
Elements 2 through 7 & 9A	\$6,273,755	\$1,318,371	\$7,592,126	\$0
Total	\$7,767,704	\$1,628,173	\$9,395,876	\$0

Quarterly Summary for Real Estate Activity	
State Share Elements 1 & 8	\$1,493,948
Local Credit Applied Elements 1 & 8	\$0
Estimated Total Quarterly State Real Estate Funding	\$1,493,948

Quarterly Advance Summary for Non-Real Estate Activity	
75% of State Share Elements 2 through 7 & 9A	\$4,705,316
Prior State Share Underfunded [1]	\$TBD
Total Advance Request of State Share for 10th Quarter [1]	\$5,245,930

[1] Subject to True-Up for 8th & 9th Quarters

The calculation of Total Advance for State Share at Start of 10th Quarter will be subject to True-Ups to account for actual expenses incurred in the 8th and 9th Quarters. TRLIA is requesting that DWR start processing the 10th Quarter advance as soon as possible to avoid future delays of State funding. TRLIA will work with department to make estimates for 8th and 9th Quarter True-Ups.

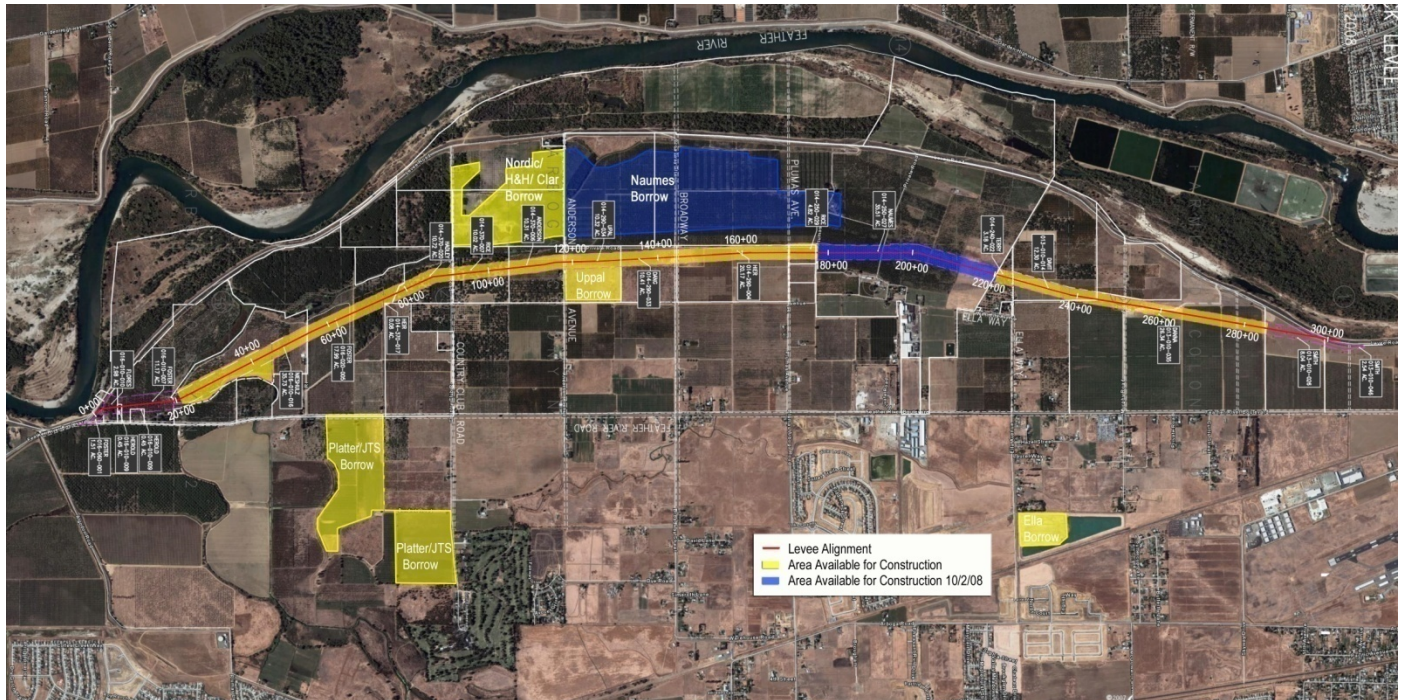
5. Project Element Information:

➤ **Element 1: Land Acquisition:**


- Project Element 1 Feature 1: There are 8 Eminent Domain cases still pending settlement. The **Anderson Case** was settled in the 9th Quarter, which will be reported on in the next Quarterly Progress Report. As settlements occur TRLIA will submit the court order and request the State share to be deposited into the appropriate escrow account. Below is recap of the work anticipated to occur in the 10th Quarter:
 - Below is a list of the remaining eminent domain cases and the projected trial date. The cases scheduled to be in trial from July to September, 2010 are the Heir Family and Nieschulz. The parties will exchange updated appraisal information 90 days before trial unless an agreement has been reached to vary that date. The following lists the scheduled trial and exchange dates for those cases, and the amount of probable compensation TRLIA deposited with the State based on its pre-condemnation appraisals.
 1. APN 014-290-004 (Heir Family) Trial 6/29/10 Exchange Completed Deposit \$267,000
 2. APN 016-010-016 (S. Nieschulz) Trial 8/31/10 Exchange 6/2/10 Deposit \$1,335,000
 3. APN 016-010-006 (L. Nieschulz) Trial 8/31/10 Exchange 6/2/10 Deposit \$17,200

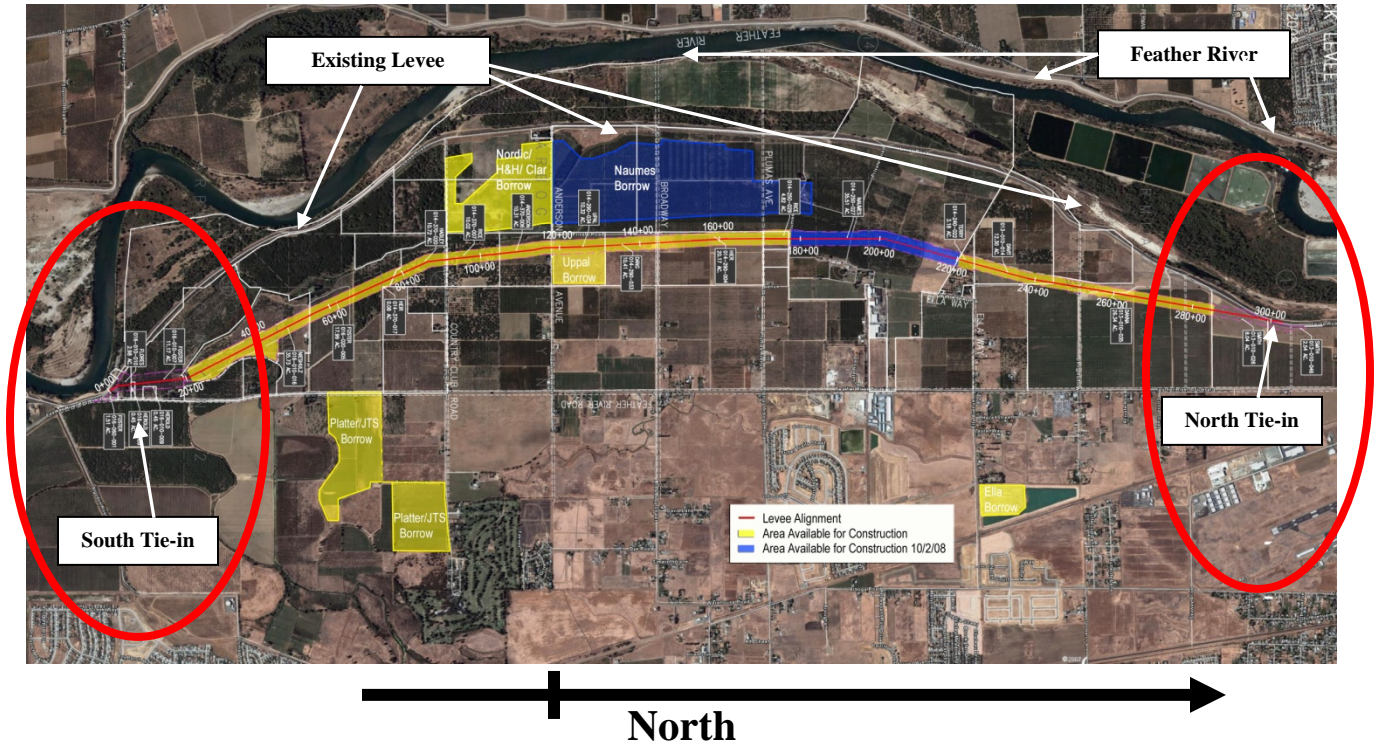
4. APN 016-060-001 (Foster Bar) Trial 11/16/10 Exchange 8/18/10 Deposit \$100,000
 5. APN 016-010-008 (Foster House) Trial 11/16/10 Exchange 8/18/10 Deposit \$23,000
 6. APN 014-370-029 and 6 others (Foster Ranch) Trial 11/16/10 Exchange 8/18/10 Deposit \$4,830,000
 7. APN 013-010-013 (Mann) Trial 3/29/11 Exchange 12/29/10 Deposit \$1,250,000
- One additional eminent domain case (Hadley) still needs to be set by the Court. This case is anticipated to be settled in 9th Quarter so the Court date has not been set.
 1. APN 014-370-020 (Hadley) Deposit \$375,000
 - Work on these settled cases will occur during the 10th Quarter:
 1. Thomas Rice: Status remains the same as reported in the 9th QWP: TRLIA has agreed to settle with Thomas Rice for \$205,000 and three miscellaneous items. The three items are: 1) TRLIA to prepare and submit a lot line adjustment to the County, 2) TRLIA to prepare and submit paperwork to the County to limit the use of Plumas Ave from Rice house to Setback levee, 3) Fence the area containing peach trees within the TRLIA levee easement right of way. Settlement documents are anticipated to be executed and processed through the court in May or June 2010.
 2. Herold: Status remains the same as reported in the 9th QWP: TRLIA settled with the property owner during the 6th quarter and the property owner has been paid. Because additional property was sought, TRLIA had to re-serve the other parties who had an interest in the property and who had previously disclaimed or defaulted. Once the service is complete and the same parties have either disclaimed or been defaulted, a final judgment can be entered and final order of condemnation recorded. We anticipate this case being completed by May or June 2010.
 - Project Element 1 Feature 2: During the 9th Quarter TRLIA anticipates modifying the Segment 3 real estate plan to acquire a landside 10-ft-wide levee O&M toe access corridor. Acquisition of the O&M corridor will most likely occur through 2011. The budget was adjusted to reflect this change.

- **Element 2: Feather River Segment 2 setback levee w/o tie-ins and new levee construction requiring federal action (except as noted in features):** Project Element 2 is shown in the graphic below



- Feature 1.1 Design: This feature is completed.
- Feature 1.2 Permitting: As part of the work that was accomplished in the 9th Quarter, TRLIA was scheduled to complete and submit 100-year FEMA certification documentation to FEMA for Project Elements 2, 3, 5, 5A, 9, and 9A in May 2010. TRLIA Consultants may be responding to FEMA Levee System Certification comments during this Quarter, however, no funds have been specifically forecasted for this effort as the remaining budget was forecast during the 9th Quarter.
- Feature 1.3 Right of Way Support: Both legal and real estate activity will continue during this quarter to support the ongoing land acquisition activities associated with Project Element 1 Feature 1.
- Feature 2: Construction Management will continue this Quarter to match the level of work associated with degrade of the existing levee (Project Element 4) and Environmental work (Project Element 2, Feature 4). Close out documentation preparation will continue during this Quarter see list below.

- Design Report: submitted January 2008; Addendum 1 April 2008
 - Design Drawings and Specifications used for construction: submitted April 2008
 - Permits: previously submitted. See permit table that is attached for listing.
 - CEQA and NEPA documents: previously submitted. See permit table for listing (attachment 1).
 - As-built drawings: As-built drawings for the completed levee are scheduled to be submitted during the 9th Quarter (April 2010). As-built drawings for non levee Project Element 2, 3, and 4 work items are anticipated to be submitted in the 11th Quarter.
- Feature 3.1 Construction of Setback Levee Foundation: Completed
 - Feature 3.2 Construction of Setback Levee Embankment and related items: All work is scheduled to be completed during this Quarter. The following construction items remain for Feature 3:
 - 1. Relief wells
 - 2. Miscellaneous fencing
 - 3. Drainage ditch
 - 4. Final site grading and clean-up
 - Feature 3.3 Relocation of PG&E facilities: Completed
 - Feature 4 Environmental and Cultural Mitigation:
 - Feature 4.1 Environmental Mitigation/Restoration: Environmental work (Wetlands Mitigation & Swale and Wind Wave Buffer) is anticipated to be completed next Quarter. Elderberry Mitigation Area negotiations will continue through this Quarter – see Environmental Matters Section below.
 - Feature 4.2 Cultural Mitigation: The final plantings on top of CA-Yuba 5 is scheduled to be completed next Quarter.
 - Feature 5 O&M Manual:
 - O&M manual addendum is anticipated to be finalized in the 10th Quarter.
- **Element 3:** Feather River Segment 2 tie-ins and new levee construction requiring federal action.
- Below is a graphic for Project Element 3 .



- Feature 1 - Construction (Embankment Feature 1.1 and Foundation Feature 1.2) are complete.
- Project Element close out documentation will be prepared during this quarter as part of Project Element 2 Feature 2.
- **Element 4: Feather River Segment 2 existing levee degrade**
 - Feature 4.1 Construction: Levee degradation is planned to be completed during this quarter. Table 3 below summarizes the amount of levee degrade anticipated to be completed by June 30th, and an estimate of degrade that would be accomplished in the 10th Quarter.

Table 3: Project Element 4 Work Schedule

	Work anticipated to be completed as of 6/30/10	Work to be performed this quarter (July-Sep)
Location	cubic yards embankment degraded	cubic yards embankment degraded
Existing Levee	2,600,000	500,000

- Project Element close out documentation will be prepared during this quarter as part of Project Element 2 Feature 2.
- **Element 5:** Feather River Segment 3 levee improvement:
 - Feature 1.1 Design: This feature is completed.
 - Feature 1.2 Permitting: Feature 1.2 Permitting: As part of the work that was accomplished in the 9th Quarter, TRLIA was scheduled to complete and submit 100-year FEMA certification documentation to FEMA for Project Elements 2, 3, 5, 5A, 9, and 9A in May 2010. TRLIA Consultants may be responding to FEMA Levee System Certification comments during this Quarter, however, no additional budget has been forecasted to be expended this quarter for this effort.
 - Feature 1.3 Right of Way Support: Both legal and real estate activity will continue during this quarter to support the ongoing land acquisition activities associated with Project Element 1 Feature 2. During the 9th Quarter TRLIA anticipates modifying the Segment 3 real estate plan to acquire a landside 10-ft-wide levee O&M toe access corridor. Acquisition of the O&M corridor will most likely occur through 2011.
 - Feature 2 Construction Management: Completed. Close out documentation has been completed. Below is the status of the Project Element Deliverables:
 - Design Report: submitted March 28, 2007
 - Design Drawings and Specifications used for construction: submitted August 22, 2007
 - Permits: previously submitted – see permit table for list (Attachment 1)
 - CEQA and NEPA documents: previously submitted see permit table (Attachment 1)
 - As-built drawings: Submitted June 2009. Supplemental as-builts for the Segment 1 crack and Segment 3 erosion site repairs were submitted in December 2009.
 - Feature 3 Construction: Construction Completed
 - Feature 4: O&M manual addendum: Completed - Final O&M manual addendum was issued in December 2009.
- **Element 5A:** Feather River Segment 3 Erosion Site 2 (Added to Agreement)

- Feature A1.1 Design: This feature is completed.
 - Feature A1.2 Permitting: As part of the work that was accomplished in the 9th Quarter, TRLIA was scheduled to complete and submit 100-year FEMA certification documentation to FEMA for Project Elements 2, 3, 5, 5A, 9, and 9A in May 2010. TRLIA Consultants may be responding to FEMA Levee System Certification comments during this Quarter, however, no additional budget has been forecasted to be expended this quarter for this effort.
 - Feature A1.3 Right of Way Support: Both legal and real estate activity will continue during this quarter to support the ongoing land acquisition activities associated with Project Element 1 Feature 2. During the 9th Quarter TRLIA anticipates modifying the Segment 3 real estate plan to acquire a landside 10-ft-levee O&M toe access corridor. Acquisition of the O&M corridor will most likely occur through 2011.
 - Feature A2 Construction Management: Completed. See Project Element 5 for Closeout documents.
 - Feature A3 Construction: Completed
 - Feature A4 O&M Manual: Completed. Final O&M manual addendum was issued in December 2009, which included this Project Element (Erosion Site 2).
- **Element 6:** Feather River Land Management:
- Feature 1 Environmental Maintenance Activities: Limited environmental maintenance activities will be performed during this quarter, since mitigation work is under construction during this Quarter.
 - Feature 2 Lease Back Activities (e.g. farming): TRLIA has 5 farming leases and 2 pending farming leases in the Feather Setback area. They are listed below:
 - Foster(016-020-005, 014-370-030, 014-370-029, 016-010-002, 016-010-007)
 - Miller (014-370-033)
 - Maxey (014-370-024)
 - Hadley (014-370-020)
 - Davit (013-010-014)
 - Nieschulz (Pending)

- Unassigned Orchards (Pending results from RFP). After an extensive RFP process, TRLIA is in the process of negotiating a lease for parcels 014-370-003, and 014-370-037. TRLIA has been working closely with DWR Real Estate to ensure the provisions of the lease meet DWR standards. TRLIA expects execution of the lease in the 9th Quarter or early in the 10th Quarter.

Payments are expected in this Quarter. The lease rate for the first year of construction was 0%. The leases then increase to 10% of the net profit for years 2 through 5. TRLIA should see additional revenues from year 2 of the leases in spring 2010.

- Feature 3 Land Maintenance of Setback area (e.g. security) post construction and prior to transfer of property to State: TRLIA will continue to manage activities on the 1600 acres that were required for the Setback levee.
 - TRLIA is implementing the interim land operations and maintenance plan for the Feather Setback area that was provided to DWR during the 8th Quarter and has adjusted the budget to reflect these changes for the 10th Quarter. The plan includes short-term and long-term operations and maintenance of the borrow sites, onsite mitigation areas, and project elements that include habitat value, such as the floodplain drainage swale and the wind wave reduction buffer waterside of the levee. **TRLIA anticipates constructing gravel roads within the setback area in order to perform maintenance and security activities. These gravel roads will be placed by the Project Element 4 (levee degrade) contractor.**
 - Due to the length of time that may be needed to transfer property to the state, TRLIA's land use responsibilities, which are part of the Feather EIP work, may extend beyond the current agreement completion date (June 30, 2012). To cover this time gap, TRLIA has recommended that DWR and TRLIA jointly create an escrow account and then jointly place the needed funding based on the current agreement cost sharing ratios into this escrow to pay for the TRLIA land maintenance costs until the land is transferred to the State. Procedures can be established for both DWR and TRLIA to sign off on any expenditure from the escrow account. The establishment of the escrow account would allow DWR and TRLIA to manage the property post the agreement time period.
 - During this Quarter TRLIA will be participating in the DWR Lower Feather River Floodway Corridor Management committee.

- **Element 7:** Project Management, legal support, community relations support, land management support, and overhead
 - Activity is anticipated in all Features during this quarter

- **Element 8:** Feather River EIP Land Acquisition (formally Associated Project Element 1)
 - Feature 1 Feather Segment 1: During the 9th Quarter TRLIA anticipates modifying the Segment 1 real estate plan to acquire a landside 50-ft wide-levee O&M toe access corridor. Acquisition of the O&M corridor will most likely commence during the 11th Quarter and occur through 2011. The overall budget was adjusted to reflect this change..

- **Element 9:** Feather River Segment 1 Levee Improvement (formally Associated Project Element 2)
 - Feature 1.1 Design: Completed

 - Feature 1.2 Permitting: As part of the work that was accomplished in the 9th Quarter, TRLIA was scheduled to complete and submit 100-year FEMA certification documentation to FEMA for Project Elements 2, 3, 5, 5A, 9, and 9A in May 2010. TRLIA Consultants may be responding to FEMA Levee System Certification comments during this Quarter, however, no additional budget has been forecasted to be expended this quarter for this effort.

 - Feature 1.3 Right of Way Support: Both legal and real estate activity will continue during this quarter to support the ongoing land acquisition activities associated with Project Element 8 Feature 1. During the 9th Quarter TRLIA anticipates modifying the Segment 1 real estate plan to acquire a landside 50-ft-wide levee O&M toe access corridor. Acquisition of the O&M corridor will most likely occur through 2011.

 - Feature 2 Construction Management: Completed. Close out documentation has been completed. Below is the status of the Project Element Deliverables:
 - Design Report: submitted March 28, 2007
 - Design Drawings and Specifications used for construction: submitted August 22, 2007
 - Permits: previously submitted – see permit table for list
 - CEQA and NEPA documents: previously submitted see permit table (Attachment 2)

- As-built drawings: Submitted June 2009. Supplemental as-built drawings for the Segment 1 crack and Segment 3 erosion site repairs were submitted in December 2009.
 - Feature 3 Construction: Completed
 - Feature 4 O&M manual addendum: Completed. Final O&M manual addendum was issued in December 2009.
- **Element 9A: Feather River Segment 1 Crack Repair (Added to Work Plan)**
- Feature A1.1 Engineering and Construction Management: TRLIA Consultants may be responding to FEMA Levee System Certification comments during this Quarter. See Project Element 9 Feature 2 for closeout documentation.
 - Feature A1.2 Right of Way Support: Both legal and real estate activity will continue during this quarter to support the ongoing land acquisition activities associated with Project Element 8 Feature 1. During the 9th Quarter TRLIA anticipates modifying the Segment 1 real estate plan to acquire a landside 50-ft-wide levee O&M toe access corridor. Acquisition of the O&M corridor will most likely occur through 2011.
 - Feature A2 Construction: Completed
 - Feature A3 O&M manual addendum: Completed. Final O&M manual addendum was issued in December 2009.
- **Environmental matters:**
 - **Project Element 2:**
 - The CVFPB encroachment permit application for the Elderberry Mitigation Area will be submitted once TRLIA, DWR, CVFPB, and F&WS have worked out a safe harbor agreement for elderberry maintenance in the Feather River floodway. DWR has established a Lower Feather River Corridor Management team that consists of local, state, and federal stakeholder to develop a Lower Feather River Corridor Management Plan. TRLIA is on this team. The DWR goal for the team is that over the next two (2) years the plan, which includes the safe harbor agreement concept, will be worked out. The two year timeframe for the plan to be completed does not meet TRLIA needs for Feather Setback Elderberry Area to be completed.

- Environmental work (Wetlands Mitigation & Swale and Vegetated Wave Buffer) is anticipated to be completed in the next Quarter. TRLIA has selected River Partners to do the mitigation work and anticipates a contract being awarded in the April/May timeframe.
- **Status of permits, easements, rights-of-way, and approvals as may be required by other State, federal, and/or local agencies:**
 - **Project Elements 2, 3, 4, 5, 5A, 9, & 9A:**
 - See Attachment 1 for the Permit status update.
 - **Project Element 2:**
 - The Corps signed the Feather River Setback Levee Environmental Impact Statement 404 permit Record of Decision on December 8, 2008, and issued the final Feather River Setback 404 permit on December 15, 2008, which allowed Project Element 3 to proceed.
 - Incorporated into the 404 permit is the approval of the on-site Wetlands Mitigation Plan.
 - The construction of the onsite Wetland mitigation area is pending the completion of the levee degrade (Project Element 4). Wetland mitigation construction is anticipated to occur summer 2010.
 - A permit condition is that prior to construction, TRLIA needs to provide a construction and performance bond or escrow for the on-site Wetlands project. This was completed in April 2009.
 - A permit condition is that prior to construction, TRLIA needs to provide a fully funded endowment for the on-site Wetlands project. This was completed in April 2009.
 - The CVFPB approved permit No. 18430 which allows levee degradation at the July 2009 Meeting. TRLIA is to submit separate encroachment permit applications to the CVFPB for the Vegetated Wave Buffer and for the Elderberry Mitigation Area.
 - TRLIA submitted an encroachment permit application to the CVFPB for the Vegetated Wave Buffer on September 3, 2009. Approval of the application is pending TRLIA and RD 784 preparing a maintenance agreement.
 - The encroachment permit application for the Elderberry Mitigation Area will be submitted once TRLIA, DWR, CVFPB, and F&WS have worked out a safe harbor agreement for elderberry

maintenance in the Feather River floodway. See discussion in the Environmental Matters Section above.

- **Major accomplishments planned for the quarter (i.e. tasks to be completed, milestones to be met, meetings to be held or attended, etc.);**
 - **Project Element 2, 3, 5, 5A, 9, 9A:** Anticipate FEMA levee accreditation to be received
 - **Project Element 4:** Degradation of the existing Feather Segment 2 levee will be completed this quarter.

- **Issues/concerns that have, will, or could affect the schedule or budget, with a recommendation on how to correct the matter:**
 - Issue 1: Timely State funding advances particularly across fiscal years due to continued state budget problems is concern. Delays in state funding forces local funds to be used to pay the State share of expenses. This places a hardship on the local community and also could force construction delays due to the local funds not being sufficient to cover the State share.

Recommended Resolution: DWR needs to advance or set aside enough funds to cover the state share of construction expenditures through the construction season prior to June 30th in order for local agencies to have the assurance that funding is available to incur large construction debt.

 - Issue 2: Due to the length of time that may be needed to transfer property to the state, TRLIA's land use responsibilities, which are part of the Feather EIP work, may extend beyond the current agreement completion date (June 30, 2012). To cover this time gap, TRLIA has recommended that DWR and TRLIA jointly create an escrow account and then jointly place the needed funding based on the current agreement cost sharing ratios into this escrow to pay for the TRLIA land maintenance costs until the land is transferred to the State. Procedures can be established for both DWR and TRLIA to sign off on any expenditure from the escrow account. The establishment of the escrow account would allow DWR and TRLIA to manage the property past the agreement time period.

Recommended Resolution: DWR agree to the establishment of the escrow account.

 - Issue 3: The CVFPB encroachment permit application for the Elderberry Mitigation Area will be submitted once TRLIA, DWR, CVFPB, and F&WS have worked out a safe harbor agreement for elderberry

maintenance in the Feather River floodway. DWR has established a Lower Feather River Corridor Management team that consists of local, state, and federal stakeholder to develop a Lower Feather River Corridor Management Plan. TRLIA is on this team. The DWR goal for the team is that over the next two (2) years the plan, which includes the safe harbor agreement concept, will be worked out. The two year timeframe for the plan to be completed does not meet TRLIA needs for Feather Setback Elderberry Area to be completed.

Recommended Resolution: DWR work with TRLIA to develop a plan that will allow the CVFPB approval of an encroachment permit for the Feather River Setback Area Elderberry Mitigation Area prior to the completion of the Lower Feather River Corridor Management Plan.

- **Describe differences between the work to be performed and the work outlined in the Overall Work Plan, including anticipated change orders:**
 - **Project Element 2 & 3:** Due to weather impacts, the contractor was not able to complete all ancillary setback levee activities in 2009. Work remaining includes completion of pump station punch list and testing, relief wells, miscellaneous gates, and final grading and clean-up. TRLIA is working with the contractor to perform a final materials quantity review, which will result in a change order to reconcile the actual quantities. Anticipate this change order to be issued during this Quarter with an estimated value of \$500,000.
 - **Project Element 4: Project Element 4:** Due to weather delays, the contractor was not able to complete degradation of the old levee and setback area final grading, which forced the contractor to demobilize. The contractor will remobilize in the spring when weather conditions allow. This delay will require additional demobilization, remobilization, and an extension of overhead that will require the negotiation of a change order. Additionally, TRLIA is working with the contractor to perform a final materials quantity review, which will result in a change order to reconcile the actual quantities. Total of both actions is estimated to be \$1.3M
 - **Project Element 4 & 6:** Fencing, gates, and gravel roads will be placed in the setback area for maintenance and security activities. A change order will be processed to accomplish this additional work. The estimate for work is being prepared and is estimated to be approximately \$500,000 to \$1,000,000.
- **Element 5 Project Element 1 Feature 2:** During the 9th Quarter TRLIA anticipates modifying the Segment 3 real estate plan to acquire a landside

10-ft-wide levee O&M toe access corridor. Acquisition of the O&M corridor will most likely occur through 2011. The cost of this change is approximately \$120,000. The work plan budget for this feature was adjusted to reflect this change.

Element 8 Project Element 1: During the 9th Quarter TRLIA anticipates modifying the Segment 1 real estate plan to acquire a landside 50-ft-wide levee O&M toe access corridor. Acquisition of the O&M corridor will most likely occur through 2011. The existing work plan budget for this feature was increased by \$250,000 to reflect this change.

- **Any litigation, proceedings or claims relating to the Project:**

- Elements 1 thru 7: None at this time

6. Cost Information by Project Element: TRLIA is submitting this 10th Quarterly Work Plan in advance of completing the 8th Quarterly Progress report and finalizing the costs associated with 8th Quarter. To date, TRLIA has only finalized costs associated with the first two months of the 8th Quarter. Final costs associated with the final month of the 8th quarter will not be prepared until the middle of May. As result, the financial information included within this Quarterly Work Plan presents the projected remaining budget as of June 30, 2010 for expected in each element as of June 2010 taking into consideration projected expenses for the 8th and 9th Quarter. Typically, the financial information in the QWP only considers one quarter of projected expenses.

- **List of changes planned to Overall Work Plan Budget and revised Overall Work Plan Budget (if needed)**

TRLIA submitted a modified Overall Work Plan (OAWP) Budget on February 3, 2010. This modified OAWP budget was also reflected in the 9th QWP. This OAWP Budget accounted for reductions to the Real Estate Budget and the allocation of that budget to other Elements and Features. Since that time, DWR has approved a modified funding agreement as well the modified Funding Agreement and augmented the total funding of State Share from \$138.5 Million to \$154.79 Million. As previously stated within this Quarterly Work Plan, the financial information reflects the modified OAWP Budget. The following table presents the modified OAWP Budget taking into consideration this augmentation of funding.

- **Element 1 Real Estate Acquisition Segment 2**

The total budget of this Feature has been increased in order to balance the total budget increase of the funding agreement modification.

- Feature 1.2 Segment 2 Real Estate - \$1,905,000

➤ **Element 2 – Segment 2 Set-Back Levee (non-tie in)**

The budgets of these two features have been increased to account for additional costs in the funding agreement modification to account for regulatory comment design changes

- Feature 2.3.1 Foundation Construction - \$1,409,400
- Feature 2.3.2 Environmental Mitigation - \$1,309,200

Additionally, Feature 2 has been increased to account for additional Construction Management cost overruns.

- Feature 2.2 Construction Management - \$200,000

➤ **Element 3 – Segment 2 Set-Back Levee (tie in)**

The budgets of these two features have been increased to account for additional costs in the funding agreement modification to account for regulatory comment design changes

- Feature 3.1.1 Foundation Construction - \$830,895
- Feature 2.1.2 Environmental Mitigation - \$913,915

➤ **Element 4 – Segment 2 Levee Degradation**

The budgets of this element has been increased to account for additional costs in the funding agreement modification to account for regulatory comment design changes

- Feature 4.1 Levee Degradation - \$355,200

➤ **Element 8 – Segment 1 Real Estate**

The overall budget of this element has been increased by \$58,166 and has been adjusted to account for State Cost Sharing.

- Feature 8.1 Segment 1 Real Estate – \$58,166

➤ **Element 9 – Segment 1**

The overall budget of this element has been increased to account for the augmented funding request (by \$1,289,224) and has been adjusted to account for State Cost Sharing. See the table below to see feature level details.

➤ **Element 9A – Segment 1 Crack Repair**

The budget of this element has been modified to account for State Cost Sharing. See the table below to see feature level details.

TRLIA Proposed Overall Work Plan Budget Modifications

(Revised to Show Changes for Modified Funding Agreement State Share)

Project Elements and Features	Current Updated Budget [1]			Proposed Budget Modification			Revised Overall Budget			Resulting State Cost Share
	State Budget (\$)	Local Budget (\$)	Total Budget (\$)	State Budget (\$)	Local Budget (\$)	Total Budget (\$)	State Budget (\$)	Local Budget (\$)	Total Budget (\$)	
Element 1: Feather River EIP Land Acquisition (see real estate Acquisition Plan)										
Feature 2 - Feather Segment 2	\$35,614,571	\$7,385,429	\$43,000,000	-\$188,334	\$2,093,334	\$1,905,000	\$35,426,237	\$9,478,763	\$44,905,000	78.8915%
Feature 3 - Feather Segment 3	\$328,595	\$140,827	\$469,422	\$0	\$0	\$0	\$328,595	\$140,827	\$469,422	70.0000%
Subtotal Element 1	\$35,943,166	\$7,526,256	\$43,469,422	-\$188,334	\$2,093,334	\$1,905,000	\$35,754,832	\$9,619,590	\$45,374,422	78.7995%
Element 2: Feather River Segment 2 new levee (Excludes Levee Tie Ins and Existing Levee Degradation)										
Feature 1.1 - Design	\$5,361,919	\$1,130,547	\$6,492,466	\$0	\$0	\$0	\$5,361,919	\$1,130,547	\$6,492,466	82.5868%
Feature 1.2 - Permitting	\$2,165,581	\$449,079	\$2,614,659	\$0	\$0	\$0	\$2,165,581	\$449,079	\$2,614,659	82.8246%
Feature 1.3 - ROW Support	\$4,563,633	\$1,084,746	\$5,648,380	\$0	\$0	\$0	\$4,563,633	\$1,084,746	\$5,648,380	80.7954%
Feature 2 - Construction Management	\$5,296,963	\$1,322,088	\$6,619,051	\$165,649	\$34,351	\$200,000	\$5,462,613	\$1,356,439	\$6,819,051	80.1081%
Feature 3.1 - Foundation Construction	\$19,349,394	\$4,085,692	\$23,435,085	\$1,234,418	\$255,982	\$1,490,400	\$20,583,811	\$4,341,674	\$24,925,485	82.5814%
Feature 3.2 - Embankment Construction	\$25,166,249	\$6,988,058	\$32,154,307	\$1,705,524	\$353,676	\$2,059,200	\$26,871,773	\$7,341,734	\$34,213,507	78.5414%
Feature 3.3 - PG&E Relocation	\$2,401,913	\$649,981	\$3,051,894	\$0	\$0	\$0	\$2,401,913	\$649,981	\$3,051,894	78.7024%
Feature 4.1 - Environmental Mitigation	\$4,141,457	\$858,543	\$5,000,000	\$0	\$0	\$0	\$4,141,457	\$858,543	\$5,000,000	82.8291%
Feature 4.2 - Cultural Mitigation	\$289,886	\$60,114	\$350,000	\$0	\$0	\$0	\$289,886	\$60,114	\$350,000	82.8246%
Feature 5 - O&M Segment 2	\$139,231	\$28,872	\$168,103	\$0	\$0	\$0	\$139,231	\$28,872	\$168,103	82.8246%
Subtotal Element 2	\$68,876,226	\$16,657,720	\$85,533,946	\$3,105,591	\$644,009	\$3,749,600	\$71,981,817	\$17,301,730	\$89,283,546	80.6216%
Element 3: Feather River Segment 2 Levee Tie Ins										
Feature 1.1 - Foundation Construction	\$4,857,871	\$1,010,591	\$5,868,462	\$688,177	\$142,708	\$830,885	\$5,546,048	\$1,153,298	\$6,699,347	82.7849%
Feature 1.2 - Embankment Construction	\$3,803,881	\$792,909	\$4,596,790	\$756,946	\$156,969	\$913,915	\$4,560,827	\$949,878	\$5,510,705	82.7630%
Subtotal Element 3	\$8,661,752	\$1,803,500	\$10,465,252	\$1,445,123	\$299,677	\$1,744,800	\$10,106,875	\$2,103,177	\$12,210,052	82.7750%
Element 4: Feather River Segment 2 Levee Degradation										
Feature 1 - Existing Levee Degradation	\$11,512,043	\$5,848,970	\$17,361,013	\$294,193	\$61,007	\$355,200	\$11,806,236	\$5,909,977	\$17,716,213	66.6409%
Subtotal Element 4	\$11,512,043	\$5,848,970	\$17,361,013	\$294,193	\$61,007	\$355,200	\$11,806,236	\$5,909,977	\$17,716,213	66.6409%
Element 5: Feather River Segment 3 Levee Improvement										
Feature 1.1 - Design	\$635,031	\$320,052	\$955,083	\$0	\$0	\$0	\$635,031	\$320,052	\$955,083	66.4896%
Feature 1.2 - Permitting	\$219,167	\$93,929	\$313,096	\$0	\$0	\$0	\$219,167	\$93,929	\$313,096	70.0000%
Feature 1.3 - ROW Support	\$199,695	\$144,126	\$343,821	\$0	\$0	\$0	\$199,695	\$144,126	\$343,821	58.0811%
Feature 2 - Construction Management.	\$775,809	\$349,854	\$1,125,663	\$0	\$0	\$0	\$775,809	\$349,854	\$1,125,663	68.9202%
Feature 3 - Construction	\$5,966,867	\$2,592,336	\$8,559,203	\$0	\$0	\$0	\$5,966,867	\$2,592,336	\$8,559,203	69.7129%
Feature 4 - O&M manual	\$55,336	\$23,716	\$79,052	\$0	\$0	\$0	\$55,336	\$23,716	\$79,052	70.0000%
Subtotal Element 5	\$7,851,905	\$3,524,012	\$11,375,917	\$0	\$0	\$0	\$7,851,905	\$3,524,012	\$11,375,917	69.0222%

TRLIA Proposed Overall Work Plan Budget Modifications

(Revised to Show Changes for Modified Funding Agreement State Share)

Project Elements and Features	Current Updated Budget [1]			Proposed Budget Modification			Revised Overall Budget			Resulting State Cost Share
	State Budget (\$)	Local Budget (\$)	Total Budget (\$)	State Budget (\$)	Local Budget (\$)	Total Budget (\$)	State Budget (\$)	Local Budget (\$)	Total Budget (\$)	
Element 5A: Feather River Segment 3 Erosion Site 2										
Feature 1.1 - Design	\$47,073	\$20,174	\$67,247	\$0	\$0	\$0	\$47,073	\$20,174	\$67,247	70.0000%
Feature 1.2 - Permitting	\$94,711	\$40,591	\$135,302	\$0	\$0	\$0	\$94,711	\$40,591	\$135,302	70.0000%
Feature 1.3 - ROW Support	\$14,000	\$6,000	\$20,000	\$0	\$0	\$0	\$14,000	\$6,000	\$20,000	70.0000%
Feature 2 - Construction Management	\$38,667	\$16,572	\$55,239	\$0	\$0	\$0	\$38,667	\$16,572	\$55,239	70.0000%
Feature 3 - Construction	\$400,548	\$171,664	\$572,212	\$0	\$0	\$0	\$400,548	\$171,664	\$572,212	70.0000%
Feature 4 - O&M manual addendum	\$3,500	\$1,500	\$5,000	\$0	\$0	\$0	\$3,500	\$1,500	\$5,000	70.0000%
Subtotal Element 5A	\$598,500	\$256,500	\$855,000	\$0	\$0	\$0	\$598,500	\$256,500	\$855,000	70.0000%
Element 6: Feather River Land Management										
Feature 1 - Environmental Restoration Activities	\$86,966	\$18,034	\$105,000	\$0	\$0	\$0	\$86,966	\$18,034	\$105,000	82.8246%
Feature 2 - Lease Back activities	\$41,412	\$8,588	\$50,000	\$0	\$0	\$0	\$41,412	\$8,588	\$50,000	82.8246%
Feature 3 - Operation And Maintenance	\$1,280,908	\$869,092	\$2,150,000	\$0	\$0	\$0	\$1,280,908	\$869,092	\$2,150,000	59.5771%
Subtotal Element 6	\$1,409,286	\$895,714	\$2,305,000	\$0	\$0	\$0	\$1,409,286	\$895,714	\$2,305,000	61.1404%
Element 7: Project Management, legal support, community relations support, land management support, and overhead										
Feature 1 - TRLIA Salaries/Benefits	\$953,797	\$295,940	\$1,249,737	\$0	\$0	\$0	\$953,797	\$295,940	\$1,249,737	76.3198%
Feature 2 - TRLIA Consultant Exp.	\$946,038	\$293,533	\$1,239,571	\$0	\$0	\$0	\$946,038	\$293,533	\$1,239,571	76.3198%
Feature 3 - TRLIA Legal Support	\$912,401	\$283,096	\$1,195,497	\$0	\$0	\$0	\$912,401	\$283,096	\$1,195,497	76.3198%
Feature 4 - TRLIA Travel Expenses	\$7,500	\$2,327	\$9,827	\$0	\$0	\$0	\$7,500	\$2,327	\$9,827	76.3198%
Feature 5 - TRLIA General Expenses	\$267,696	\$83,060	\$350,756	\$0	\$0	\$0	\$267,696	\$83,060	\$350,756	76.3198%
Feature 6 - TRLIA Insurance	\$535,288	\$166,087	\$701,375	\$0	\$0	\$0	\$535,288	\$166,087	\$701,375	76.3198%
Feature 7 - TRLIA Travel	\$20,051	\$6,221	\$26,273	\$0	\$0	\$0	\$20,051	\$6,221	\$26,273	76.3198%
Feature 8 - TRLIA Memberships	\$14,351	\$4,453	\$18,804	\$0	\$0	\$0	\$14,351	\$4,453	\$18,804	76.3198%
Subtotal Element 7	\$3,657,123	\$1,134,718	\$4,791,840	\$0	\$0	\$0	\$3,657,123	\$1,134,718	\$4,791,840	76.3198%
Element 8: Segment 1 Feather River EIP Land Acquisition (Previously Associated Element 1)										
Feature 1 - Feather River Segment 1	\$0	\$572,106	\$572,106	\$441,190	-\$383,024	\$58,166	\$441,190	\$189,082	\$630,272	70.0000%
Subtotal Element 8	\$0	\$572,106	\$572,106	\$441,190	-\$383,024	\$58,166	\$441,190	\$189,082	\$630,272	70.0000%

TRLIA Proposed Overall Work Plan Budget Modifications

(Revised to Show Changes for Modified Funding Agreement State Share)

Project Elements and Features	Current Updated Budget [1]			Proposed Budget Modification			Revised Overall Budget			Resulting State Cost Share
	State Budget (\$)	Local Budget (\$)	Total Budget (\$)	State Budget (\$)	Local Budget (\$)	Total Budget (\$)	State Budget (\$)	Local Budget (\$)	Total Budget (\$)	
Element 9: Feather River Segment 1 levee improvement (Previously Associated Element 2)										
Feature 1.1 - Design	\$0	\$1,266,552	\$1,266,552	\$976,725	-\$847,955	\$128,770	\$976,725	\$418,597	\$1,395,322	70.0000%
Feature 1.2 - Permitting	\$0	\$323,086	\$323,086	\$249,154	-\$216,306	\$32,848	\$249,154	\$106,780	\$355,934	70.0000%
Feature 1.3 - ROW Support	\$0	\$223,098	\$223,098	\$172,047	-\$149,364	\$22,682	\$172,047	\$73,734	\$245,781	70.0000%
Feature 2 - Construction Management.	\$0	\$1,417,557	\$1,417,557	\$1,093,176	-\$949,053	\$144,123	\$1,093,176	\$468,504	\$1,561,680	70.0000%
Feature 3 - Construction	\$0	\$9,366,159	\$9,366,159	\$7,222,890	-\$6,270,634	\$952,255	\$7,222,890	\$3,095,524	\$10,318,414	70.0000%
Feature 4 - O&M manual	\$0	\$84,052	\$84,052	\$64,818	-\$56,273	\$8,546	\$64,818	\$27,779	\$92,597	70.0000%
Subtotal Element 9	\$0	\$12,680,504	\$12,680,504	\$9,778,810	-\$8,489,585	\$1,289,224	\$9,778,810	\$4,190,918	\$13,969,728	70.0000%
Element 9A: Feather River Segment 1 Crack Repair										
Feature 1.1 - Engineering & CM	\$0	\$675,000	\$675,000	\$472,500	-\$472,500	\$0	\$472,500	\$202,500	\$675,000	70.0000%
Feature 1.2 - ROW Support	\$0	\$15,000	\$15,000	\$10,500	-\$10,500	\$0	\$10,500	\$4,500	\$15,000	70.0000%
Feature 2 - Construction	\$0	\$1,300,000	\$1,300,000	\$910,000	-\$910,000	\$0	\$910,000	\$390,000	\$1,300,000	70.0000%
Feature 3 - O&M manual addendum	\$0	\$10,000	\$10,000	\$7,000	-\$7,000	\$0	\$7,000	\$3,000	\$10,000	70.0000%
Subtotal Element 9A	\$0	\$2,000,000	\$2,000,000	\$1,400,000	-\$1,400,000	\$0	\$1,400,000	\$600,000	\$2,000,000	70.0000%
TOTAL ALL ELEMENTS	\$138,510,000	\$52,900,000	\$191,410,000	\$16,276,573	-\$7,174,583	\$9,101,990	\$154,786,573	\$45,725,417	\$200,511,990	
							Non Real Estate Budget	\$118,244,907	\$35,942,661	\$154,187,568

"revisedbudget11"

[1] Reflects Revisions Made on February 3rd and 9th Quarterly Work Plan dated March 5, 2010.

- **Projected costs compared to Revised Overall Work Plan Budget:**

- **Element 1 – Real Estate (Segments 2 & 3):** The revised Overall Work Plan Budget for Element 1 is now \$45.3 million. Through June 2010, TRLIA expects to have expended approximately 94.7% of the revised total budget, about \$42.3 million. In the 10th quarter of the project, TRLIA expects to be resolving eminent domain cases either through settlement or trial. The estimate for these expenses during the 10th Quarter is \$1,803,750. This estimate may vary based upon the timing for completion of court trials and the ultimate outcomes. The remaining funding for this element is anticipated to be used to settle remaining eminent domain cases.
- **Element 8 – Real Estate (Segment 1):** The revised Overall Work Plan Budget for Element 8 is now \$630,000. Through June 2010, TRLIA expects to have expended approximately 15.3% of the revised total budget, about \$96,453 million. In the 10th quarter of the project, TRLIA does not expend any additional budget. Additional easement acquisition is expected to occur in the 11th Quarter.
- **Element 2 – Segment 2 Construction (Except Tie-Ins):** The revised overall budget for Element 2 is now \$89.3 million. Through the end of the 9th Quarter (June '10) TRLIA expects to have expended \$82.3 million. During the 10th Quarter TRLIA expects to incur an additional \$4.05 million. This will predominately be costs associated with the completion of the Embankment construction, legal costs associated with the settlement of eminent domain court cases, and construction management expenses. Including this work, through September 2010, TRLIA expects to have expended approximately 96.75% of the revised budget for this element.
- **Element 3 –Segment 2 Construction (Tie-Ins):** The revised overall budget for Element 3 is \$12.2 million. Through the 9th Quarter, June 2010, TRLIA expects to have expended \$7.7 million of expenses. Element 3 will be completed before the 10th Quarter, as such TRLIA has not forecasted any additional expenses in the 10th Quarter. TRLIA will be working to close this element out prior to the 10th Quarter. Any remaining budget for the Element after the close out will be transferred as needed to remaining Elements to the extent additional budget is needed.
- **Element 4 – Segment 2 Existing Levee Degrade:** The revised overall budget for Element 4 is \$17.7 million. Through the 9th Quarter, June 2010, expects to have expended \$12.7 million, approximately 71.7% of the overall budget for this element. TRLIA expects in the 10th quarter to incur an additional \$3.3 million of expenses (90.4% of the total budget). This effort should complete the levee degradation work.

- **Element 5 – Segment 3 Levee Improvements:** The overall budget for Element 5 is \$11.4 million. Through end of the 9th Quarter (June 2010), TRLIA expects to have expended approximately 97% of the total revised budget, about \$11.0 million. Through the 10th Quarter (September 2010), TRLIA expects to start working of the acquisition of required maintenance easement land acquisition.
- **Element 5A – Segment 3 Erosion Site 2:** The overall budget for Element 5A is \$855,000. Through end of the 9th Quarter (June 2010), TRLIA expects to have expended approximately 83.7% of the total budget, about \$716,000. Through the 10th Quarter (September 2010), TRLIA expects to start working of the acquisition of required maintenance easement land acquisition.
- **Element 6 – Feather River Land Management:** The revised overall budget for Element 6 is \$2,305,000. The Land Maintenance Budget has been increased significantly to address the long term maintenance needs of the set back area. Through the 9th Quarter, June 2010, TRLIA will have expended \$198,600 of this budget. Additional activities related to managing the 1,600 acre setback area will continue this quarter.
- **Element 7 - Project Management, Legal, Community Relations, Land Management, and Overhead:** The revised overall budget for Element 7 is \$4.8 million. Through the 9th Quarter (June 2010), TRLIA expects to have expended \$4.5 million or 95% of the total revised budget. Through the 10th Quarter (September 2010), TRLIA expects to have expended an additional \$162,000. The remaining budget for this Element will continue TRLIA overhead and management efforts. As if October 2009, the commencement of the 7th quarter, the allocation of TRLIA's overhead has been split between the Feather River project and the Yuba River Project.
- **Element 9 – Segment 1 Levee Improvements:** The revised overall budget for Element 9 is \$14 million. Through end of the 9th Quarter (June 2010), TRLIA expects to have expended approximately 88.3% of the total revised budget, about \$12.3 million. Through the 10th Quarter (September 2010), TRLIA expects to start working of the acquisition of required maintenance easement land acquisition.
- **Element 9A –Segment 1 Crack Repair:** The overall budget for Element 9A is \$2.0 million. Through the 9th Quarter, June 2010, TRLIA expects to have expended \$457,000 of expenses. Element 9A will have been completed before the 10th Quarter, as such TRLIA has not forecasted any additional expenses in the 10th Quarter. TRLIA will be working to close this element out prior to the 10th Quarter. Any remaining budget for the Element after the close out will be transferred as needed to remaining Elements to the extent additional budget is needed.

- **The amount of funds sought from the State and the Amount of Local Funds intended to be expended**

As presented in Item 4 of this 10th Quarter Work Plan:

Summary				
Description	State Share	Local Share	Total	Local Credit Applied
Element 1 & 8 - Land Acquisition	\$1,493,948	\$309,802	\$1,803,750	\$0
Elements 2 through 7 & 9A	\$6,273,755	\$1,318,371	\$7,592,126	\$0
Total	\$7,767,704	\$1,628,173	\$9,395,876	\$0

Quarterly Summary for Real Estate Activity	
State Share Elements 1 & 8	\$1,493,948
Local Credit Applied Elements 1 & 8	\$0
Estimated Total Quarterly State Real Estate Funding	\$1,493,948

Quarterly Advance Summary for Non-Real Estate Activity	
75% of State Share Elements 2 through 7 & 9A	\$4,705,316
Prior State Share Underfunded [1]	\$TBD
Total Advance Request of State Share for 10th Quarter [1]	\$5,245,930

[1] Subject to True-Up for 8th & 9th Quarters

The calculation of Total Advance for State Share at Start of 10th Quarter will be subject to True-Ups to account for actual expenses incurred in the 8th and 9th Quarters. TRLIA is requesting that DWR start processing the 10th Quarter advance as soon as possible to avoid future delays of State funding. TRLIA will work with department to make estimates for 8th and 9th Quarter True-Ups.

- **Detailed Quarterly Work Plan Budget Forecast**

The following tables present Element and Feature level details for the 9th Quarter Work Plan.

Summary of TRLIA Quarterly Work Plan Budget

For Period July / August / September 2010

SUMMARY ALL ELEMENTS

Elements and Features	Revised Overall Budget [1]			Forecasted Expenses (through March, 2010)				Forecasted Remaining Budget			Quarterly Forecast			Advance
	Total	State	Local	Total	State Share	Local Share	Total	State Share	Local Share	Total	State	Local	State Share	
Formula	b	c*	d = b-c	e	Credit f	Payments g	Local Share (after credit) h=e-f-g	i=b-e	j=c-f-g	k=d-h	l	m=lxa	n=l-m	o=m*75%
		<small>*Based on Overall Workplan</small>		[2]	[3]	[4]	<small>*Not less than zero</small>							
Quarterly Advance Request														
Element 2: Segment 2 New Levee	\$89,283,546	\$71,981,817	\$17,301,730	\$82,322,345	\$6,777,121	\$61,406,018	\$14,139,206	\$6,961,201	\$3,798,678	\$3,162,523	\$4,050,032	\$3,354,422	\$695,610	\$2,515,817
Element 3: Segment 2 Levee Tie Ins	\$12,210,052	\$10,106,875	\$2,103,177	\$7,684,448	\$0	\$6,364,612	\$1,319,836	\$4,525,604	\$3,742,264	\$783,341	\$0	\$0	\$0	\$0
Element 4: Segment 2 Levee Degradation	\$17,716,213	\$11,806,236	\$5,909,977	\$12,710,797	\$0	\$10,527,665	\$0	\$5,005,416	\$1,278,571	\$3,726,845	\$3,300,000	\$2,733,211	\$566,789	\$2,049,908
Element 5: Segment 3 Levee Improvement	\$11,375,917	\$7,851,905	\$3,524,012	\$11,042,025	\$3,155,224	\$4,574,194	\$3,312,608	\$333,891	\$122,487	\$211,404	\$7,500	\$5,250	\$2,250	\$3,938
Element 5A: Segment 3 Erosion Site 2	\$855,000	\$598,500	\$256,500	\$716,012	\$0	\$501,209	\$214,804	\$138,988	\$97,291	\$41,696	\$7,500	\$5,250	\$2,250	\$3,938
Element 6: Land Management	\$2,305,000	\$1,409,286	\$895,714	\$198,593	\$0	\$164,484	\$34,109	\$2,106,407	\$1,244,802	\$861,605	\$50,000	\$41,412	\$8,588	\$31,059
Element 7: PM & Overhead	\$4,791,840	\$3,657,123	\$1,134,718	\$4,541,314	\$1,464,186	\$2,001,735	\$1,075,393	\$250,527	\$191,201	\$59,325	\$162,094	\$123,709	\$38,384	\$92,782
Element 9: Segment 1 Levee Improvement	\$13,969,728	\$9,778,810	\$4,190,918	\$12,329,177	\$987,512	\$7,642,912	\$3,698,753	\$1,640,551	\$1,148,386	\$492,165	\$15,000	\$10,500	\$4,500	\$7,875
Element 9A: Segment 1 Crack Repair	\$2,000,000	\$1,400,000	\$600,000	\$457,622	\$0	\$320,335	\$137,287	\$1,542,378	\$1,079,665	\$462,713	\$0	\$0	\$0	\$0
Subtotal Elements 2 through 9A	\$154,507,296	\$118,590,551	\$35,916,746	\$132,002,332	\$12,384,043	\$93,503,162	\$23,931,995	\$22,504,964	\$12,703,346	\$9,801,618				
						\$105,887,205								
											\$7,592,126	\$6,273,755	\$1,318,371	\$4,705,316
Totals for Quarter Eligible for 75% Advance of State Share														
Real Estate Forecast for Quarter														
Element 1: Land Acquisition	\$45,374,422	\$35,754,832	\$9,619,590	\$42,990,241	\$3,022,288	\$32,573,928	\$7,394,025	\$2,384,181	\$158,616	\$2,225,564	\$1,803,750	\$1,493,948	\$309,802	
Element 8: Segment 1 Land Acquisition	\$630,272	\$441,190	\$189,082	\$96,453	\$47,728	\$19,789	\$28,936	\$533,819	\$373,673	\$160,146	\$0	\$0	\$0	
Subtotal Real Estate Forecast	\$46,004,694	\$36,196,023	\$9,808,671	\$43,086,694	\$3,070,016	\$32,593,717	\$7,422,961	\$2,917,999	\$532,289	\$2,385,710	\$1,803,750	\$1,493,948	\$309,802	
Total Elements 1 through 9A	\$200,511,990	\$154,786,573	\$45,725,417	\$175,089,027	\$15,454,059	\$126,096,879	\$31,354,956	\$25,422,964	\$13,235,635	\$12,187,328	\$9,395,876	\$7,767,704	\$1,628,173	

Local Credit Reconciliation

Total Local Share of Expenses this Quarter	\$1,318,371 (From Above)
Total Approved Local Credit	\$15,406,331 (Estimated Amount reflective of Segment 1 and Erosion Site 2 Credits)
Use of Local Credit	
Use of Local Credit for Real Estate to Date	-\$5,282,141
Payments of Credit w/ 1st Quarterly Advance (Per Invoice Advance - 1)	-\$2,461,666
Payments of Credit w/ 2nd Quarterly Advance (Per Revised Invoice Advance-2)	-\$1,469,507
Payments of Credit w/2nd Quarter True-Up	-\$3,812,451
Payments of Credit w/3rd Quarterly Advance	-\$567,189
Payments of Credit w/3rd Quarterly Advance (Update based on Addtl. Costs)	-\$825,928
Payment in Process for Reimbursement of Segment 1 & Erosion Site 2	-\$987,512 (Estimated Payment Amount in Process)
Use of Local Credit	-\$15,406,394
Total Local Credit Used	-\$15,406,394
Remaining Local Credit	-\$63
Requested Local Credit to be Paid with Advance	-\$63 (No Local Credit Remaining)

"10QSumm"

[1] Revised per this 10th QWP to account for funding agreement modifications.

[2] Reflects costs incurred through submitted 7th QPR (December '09) with estimates of expenses forecasted in 8th and 9th QWP's. Minor adjustments are made as necessary for actual expenses incurred and schedule changes in 8th Qtr.

[3] Amount paid from credit.

[4] Represents State Share of actual expenses through March plus forecasted amount (ref. Note 2).

TRLIA Quarterly Work Plan Budget

For Period July / August / September 2010

ELEMENT 1

Elements and Features	State Share Percentage	Revised Overall Budget [1]			Cumulative Expenses (through Jun, 2010)			Forecasted Remaining Budget			% of Total Budget Remaining	10th Quarterly Forecast			% of Remaining Budget	
		Total	State	Local	Total	State Share Amounts		Total	State Share	Local Share		Total	State	Local		
		a	b	c*	d = b-c	e	Credit f	Payment g	h=e-f-g	i=b-e		j=c-f-g	k=d-h	l		m=l-x
<i>Formula</i>					[2]	[3]	[4]									
Element 1: Feather River EIP Land Acquisition																
(see real estate Acquisition Plan)																
Feature 1 - Feather Segment 2	82.8246%	\$44,905,000	\$35,426,237	\$9,478,763	\$42,910,147	\$2,983,248	\$32,556,902	\$7,369,997	\$1,994,853	-\$113,913	\$2,108,766	4%	\$1,803,750	\$1,493,948	\$309,802	90%
Feature 2 - Feather Segment 3	70.0000%	\$469,422	\$328,595	\$140,827	\$80,095	\$39,040	\$17,026	\$24,028	\$389,327	\$272,529	\$116,798	83%	\$0	\$0	\$0	0%
Subtotal Element 1		\$45,374,422	\$35,754,832	\$9,619,590	\$42,990,241	\$3,022,288	\$32,573,928	\$7,394,025	\$2,384,181	\$158,616	\$2,225,564	5%	\$1,803,750	\$1,493,948	\$309,802	76%

"10QElem1"

[1] Revised per this 10th QWP to account for funding agreement modifications.

[2] Reflects costs incurred through submitted 7th QPR (December '09) with estimates of expenses forecasted in 8th and 9th QWP's. Minor adjustments are made as necessary for actual expenses incurred and schedule changes in 8th Qtr.

[3] Amount paid from credit.

[4] Represents State Share of actual expenses through March plus forecasted amount (ref. Note 2).

TRLIA Quarterly Work Plan Budget

For Period July / August / September 2010

ELEMENT 8

Elements and Features	State Share Percentage	Revised Overall Budget [1]			Cumulative Expenses (through Jun, 2010)			Forecasted Remaining Budget			% of Total Budget Remaining	10th Quarterly Forecast			% of Remaining Budget	
		Total	State	Local	Total	State Share Amounts		Local Share	Total	State Share		Local Share	Total	State		Local
		a	b	c*	d = b-c	e	Credit f	Payment g	h=e-f-g	i=b-e		j=c-f-g	k=d-h	l		m=lxa
<i>Formula</i>			<small>*Based on Overall Workplan</small>		[2]	[3]	[4]									
Element 8: Segment 1 Feather River EIP Land Acquisition																
Feature 1 - Feather Segment 1	70.0000%	\$630,272	\$441,190	\$189,082	\$96,453	\$47,728	\$19,789	\$28,936	\$533,819	\$373,673	\$160,146	85%	\$0	\$0	\$0	0%
Subtotal Element 8		\$630,272	\$441,190	\$189,082	\$96,453	\$47,728	\$19,789	\$28,936	\$533,819	\$373,673	\$160,146	85%	\$0	\$0	\$0	0%

"10QElem1"

[1] Revised per this 10th QWP to account for funding agreement modifications.

[2] Reflects costs incurred through submitted 7th QPR (December '09) with estimates of expenses forecasted in 8th and 9th QWP's. Minor adjustments are made as necessary for actual expenses incurred and schedule changes in 8th Qtr.

[3] Amount paid from credit.

[4] Represents State Share of actual expenses through March plus forecasted amount (ref. Note 2).

TRLIA Quarterly Work Plan Budget

For Period July / August / September 2010

ELEMENT 2

Elements and Features	State Share Percentage	Revised Overall Budget [1]			Cumulative Expenses (through Jun, 2010)				Forecasted Remaining Budget			% of Total Budget Remaining	10th Quarterly Forecast			% of Remaining Budget
		Total	State	Local	Total	State Share		Local Share	Total	State Share	Local Share		Total	State	Local	
		a	b	c*	d = b-c	e	Credit f	Payments g	Local Share (after credit) h=e-f-g	i=b-e	j=c-f-g		k=d-h	l	m=lx	
<i>Formula</i>			<small>*Based on Overall Workplan</small>		[2]	[3]	[4]	<small>*Not less than zero</small>								
Element 2: Feather River Segment 2 new levee																
(Excludes Levee Tie Ins and Existing Levee Degradation)																
2.1.1: Design	82.8246%	\$6,492,466	\$5,361,919	\$1,130,547	\$6,466,659	\$4,533,871	\$822,112	\$1,110,676	\$25,807	\$5,935	\$19,871	0%	\$0	\$0	\$0	0%
2.1.2: Permitting	82.8246%	\$2,614,659	\$2,165,581	\$449,079	\$2,614,659	\$1,204,454	\$961,126	\$449,079	\$0	\$0	\$0	0%	\$0	\$0	\$0	95%
2.1.3: Right of Way Support	82.8246%	\$5,648,380	\$4,563,633	\$1,084,746	\$4,824,118	\$940,436	\$3,055,120	\$828,562	\$824,262	\$568,078	\$256,184	15%	\$620,000	\$513,512	\$106,488	75%
2.2: Construction Management	82.8246%	\$6,819,051	\$5,462,613	\$1,356,439	\$6,290,034	\$14,362	\$5,195,333	\$1,080,340	\$529,017	\$252,918	\$276,099	8%	\$505,388	\$418,585	\$86,802	96%
2.3 Construction of Setback																
2.3.1: Foundation	82.8246%	\$24,925,485	\$20,583,811	\$4,341,674	\$23,360,014	\$0	\$19,347,834	\$4,012,180	\$1,565,471	\$1,235,977	\$329,494	6%	\$0	\$0	\$0	0%
2.3.2: Embankment	82.8246%	\$34,213,507	\$26,871,773	\$7,341,734	\$31,213,539	\$42,486	\$25,809,997	\$5,361,056	\$2,999,968	\$1,019,290	\$1,980,678	9%	\$2,800,000	\$2,319,088	\$480,912	93%
2.3.3: Relocation of PG&E Fac.	82.8246%	\$3,051,894	\$2,401,913	\$649,981	\$2,605,433	\$41,412	\$2,116,527	\$447,494	\$446,461	\$243,974	\$202,487	15%	\$0	\$0	\$0	0%
2.4: Environmental & Cultural Mitigation																
2.4.1: Mitigation & Restoration	82.8246%	\$5,000,000	\$4,141,457	\$858,543	\$4,688,705	\$99	\$3,883,301	\$805,305	\$311,295	\$258,057	\$53,238	6%	\$124,644	\$103,236	\$21,408	40%
2.4.2: Cultural Mitigation/Section	82.8246%	\$350,000	\$289,886	\$60,114	\$100,000	\$0	\$82,825	\$17,175	\$250,000	\$207,061	\$42,939	71%	\$0	\$0	\$0	0%
2.5: Operation and Maintenance M	82.8246%	\$168,103	\$139,231	\$28,872	\$159,183	\$0	\$131,843	\$27,340	\$8,920	\$7,388	\$1,532	5%	\$0	\$0	\$0	0%
Subtotal Element 2		\$89,283,546	\$71,981,817	\$17,301,730	\$82,322,345	\$6,777,121	\$61,406,018	\$14,139,206	\$6,961,201	\$3,798,678	\$3,162,523	8%	\$4,050,032	\$3,354,422	\$695,610	58%

10QElem2

[1] Revised per this 10th QWP to account for funding agreement modifications.

[2] Reflects costs incurred through submitted 7th QPR (December '09) with estimates of expenses forecasted in 8th and 9th QWP's. Minor adjustments are made as necessary for actual expenses incurred and schedule changes in 8th Qtr.

[3] Amount paid from credit.

[4] Represents State Share of actual expenses through March plus forecasted amount (ref. Note 2).

TRLIA Quarterly Work Plan Budget

For Period July / August / September 2010

ELEMENT 3

Elements and Features	State Share Percentage	Revised Overall Budget [1]			Cumulative Expenses (through Jun, 2010)			Forecasted Remaining Budget			% of Total Budget Remaining	10th Quarterly Forecast			% of Remaining Budget	
		Total	State	Local	Total	State Share	Local Share	Total	State Share	Local Share		Total	State	Local		
Formula	a	b	c* <small>*Based on Overall Workplan</small>	d = b-c	e	f <small>[2]</small>	g <small>[3]</small>	h=e-f-g <small>[4]</small> <small>*Not less than zero</small>	i=b-e	j=c-f-g	k=d-h		l	m=lxa	n=l-m	
Element 3: Feather River Segment 2 Levee Tie Ins																
3.1.1: Foundation	82.8246%	\$6,699,347	\$5,546,048	\$1,153,298	\$5,146,426	\$0	\$4,262,505	\$883,920	\$1,552,921	\$1,283,543	\$269,378	23%	\$0	\$0	\$0	0%
3.1.2: Embankment	82.8246%	\$5,510,705	\$4,560,827	\$949,878	\$2,538,022	\$0	\$2,102,106	\$435,916	\$2,972,683	\$2,458,721	\$513,962	54%	\$0	\$0	\$0	0%
Subtotal Element 3		\$12,210,052	\$10,106,875	\$2,103,177	\$7,684,448	\$0	\$6,364,612	\$1,319,836	\$4,525,604	\$3,742,264	\$783,341	37%	\$0	\$0	\$0	0%

"10QElem3"

[1] Revised per this 10th QWP to account for funding agreement modifications.

[2] Reflects costs incurred through submitted 7th QPR (December '09) with estimates of expenses forecasted in 8th and 9th QWP's. Minor adjustments are made as necessary for actual expenses incurred and schedule changes in 8th Qtr.

[3] Amount paid from credit.

[4] Represents State Share of actual expenses through March plus forecasted amount (ref. Note 2).

TRLIA Quarterly Work Plan Budget
For Period July / August / September 2010

ELEMENT 4

Elements and Features	State Share Percentage	Revised Overall Budget [1]			Cumulative Expenses (through Jun, 2010)			Forecasted Remaining Budget			% of Total Budget Remaining	10th Quarterly Forecast			% of Remaining Budget	
		Total	State	Local	Total	State Share	Local Share	Total	State Share	Local Share		Total	State	Local		
Formula	a	b	c* <small>*Based on Overall Workplan</small>	d = b-c	e <small>[2]</small>	f <small>[3]</small>	g <small>[4]</small>	h=e-f-g <small>*Not less than zero</small>	i=b-e	j=c-f-g	k=d-h		l	m=lxa	n=l-m	
Element 4: Feather River Segment 2 Levee Degradation																
4.1: Construction	82.8246%	\$17,716,213	\$11,806,236	\$5,909,977	\$12,710,797	\$0	\$10,527,665	\$2,183,132	\$5,005,416	\$1,278,571	\$3,726,845	28%	\$3,300,000	\$2,733,211	\$566,789	66%
Subtotal Element 4		\$17,716,213	\$11,806,236	\$5,909,977	\$12,710,797	\$0	\$10,527,665	\$0	\$5,005,416	\$1,278,571	\$3,726,845	28%	\$3,300,000	\$2,733,211	\$566,789	66%

"10QElem4"

[1] Revised per this 10th QWP to account for funding agreement modifications.

[2] Reflects costs incurred through submitted 7th QPR (December '09) with estimates of expenses forecasted in 8th and 9th QWP's. Minor adjustments are made as necessary for actual expenses incurred and schedule changes in 8th Qtr.

[3] Amount paid from credit.

[4] Represents State Share of actual expenses through March plus forecasted amount (ref. Note 2).

TRLIA Quarterly Work Plan Budget

For Period July / August / September 2010

ELEMENT 5

Elements and Features	State Share Percentage	Revised Overall Budget [1]			Cumulative Expenses (through Jun, 2010)				Forecasted Remaining Budget			% of Total Budget Remaining	10th Quarterly Forecast			% of Remaining Budget
		Total	State	Local	Total	State Share	Local Share	Total	State Share	Local Share	Total		State	Local		
Formula	a	b	c*	d = b-c	e	Credit f	Payments g	Local Share (after credit) h=e-f-g	i=b-e	j=c-f-g	k=d-h		l	m=lxa	n=l-m	
			*Based on Overall Workplan		[2]	[3]	[4]	*Not less than zero								
Element 5: Feather River Segment 3 levee improvement																
5.1.1: Design	70.0000%	\$955,083	\$635,031	\$320,052	\$919,013	\$582,099	\$61,211	\$275,704	\$36,070	-\$8,278	\$44,348	4%	\$0	\$0	\$0	0%
5.1.2: Permitting	70.0000%	\$313,096	\$219,167	\$93,929	\$208,889	\$91,124	\$55,098	\$62,667	\$104,207	\$72,945	\$31,262	33%	\$0	\$0	\$0	0%
5.1.3: Right of Way Support [4]	70.0000%	\$343,821	\$199,695	\$144,126	\$287,610	\$136,399	\$64,928	\$86,283	\$56,210	-\$1,632	\$57,843	16%	\$7,500	\$5,250	\$2,250	13%
5.2: Construction Management	70.0000%	\$1,125,663	\$775,809	\$349,854	\$1,125,610	\$438,350	\$349,577	\$337,683	\$53	-\$12,118	\$12,171	0%	\$0	\$0	\$0	0%
5.3 Construction	70.0000%	\$8,559,203	\$5,966,867	\$2,592,336	\$8,499,220	\$1,907,252	\$4,042,202	\$2,549,766	\$59,983	\$17,413	\$42,570	1%	\$0	\$0	\$0	0%
5.4: O&M Manual	70.0000%	\$79,052	\$55,336	\$23,716	\$1,683	\$0	\$1,178	\$505	\$77,369	\$54,158	\$23,211	98%	\$0	\$0	\$0	0%
Subtotal Element 5		\$11,375,917	\$7,851,905	\$3,524,012	\$11,042,025	\$3,155,224	\$4,574,194	\$3,312,608	\$333,891	\$122,487	\$211,404	3%	\$7,500	\$5,250	\$2,250	2%

"10QElem5"

[1] Revised per this 10th QWP to account for funding agreement modifications.

[2] Reflects costs incurred through submitted 7th QPR (December '09) with estimates of expenses forecasted in 8th and 9th QWP's. Minor adjustments are made as necessary for actual expenses incurred and schedule changes in 8th Qtr.

[3] Amount paid from credit.

[4] Represents State Share of actual expenses through March plus forecasted amount (ref. Note 2).

TRLIA Quarterly Work Plan Budget

For Period July / August / September 2010

ELEMENT 5A

Elements and Features	State Share Percentage	Revised Overall Budget [1]			Cumulative Expenses (through Jun, 2010)				Forecasted Remaining Budget			% of Total Budget Remaining	10th Quarterly Forecast			% of Remaining Budget
		Total	State	Local	Total	State Share		Local Share	Total	State Share	Local Share		Total	State	Local	
						Credit	Payments	(after credit)								
<i>Formula</i>	a	b	c*	d = b-c	e	f	g	h=e-f-g	i=b-e	j=c-f-g	k=d-h		l	m=lx	n=l-m	
			<small>*Based on Overall Workplan</small>		<small>[2]</small>	<small>[3]</small>	<small>[4]</small>	<small>*Not less than zero</small>								
Element 5A: Feather River Segment 3 Erosion Site 2																
5A.1.1 - Design	70.0000%	\$67,247	\$47,073	\$20,174	\$60,962	\$0	\$42,673	\$18,289	\$6,285	\$4,400	\$1,886	9%	\$0	\$0	\$0	0%
5A.1.2 - Permitting	70.0000%	\$135,302	\$94,711	\$40,591	\$126,341	\$0	\$88,439	\$37,902	\$8,961	\$6,272	\$2,688	7%	\$0	\$0	\$0	0%
5A.1.3 - ROW Support	70.0000%	\$20,000	\$14,000	\$6,000	\$5,830	\$0	\$4,081	\$1,749	\$14,170	\$9,919	\$4,251	71%	\$0	\$0	\$0	0%
5A.2 - Construction Management.	70.0000%	\$55,239	\$38,667	\$16,572	\$41,128	\$0	\$28,790	\$12,338	\$14,111	\$9,878	\$4,233	26%	\$7,500	\$5,250	\$2,250	53%
5A.3 - Construction	70.0000%	\$572,212	\$400,548	\$171,664	\$481,751	\$0	\$337,226	\$144,525	\$90,461	\$63,323	\$27,138	16%	\$0	\$0	\$0	0%
5A.4 - O&M manual addendum	70.0000%	\$5,000	\$3,500	\$1,500	\$0	\$0	\$0	\$0	\$5,000	\$3,500	\$1,500	100%	\$0	\$0	\$0	0%
Subtotal Element 5A		\$855,000	\$598,500	\$256,500	\$716,012	\$0	\$501,209	\$214,804	\$138,988	\$97,291	\$41,696	16%	\$7,500	\$5,250	\$2,250	5%

"10QElem5A"

[1] Revised per this 10th QWP to account for funding agreement modifications.

[2] Reflects costs incurred through submitted 7th QPR (December '09) with estimates of expenses forecasted in 8th and 9th QWP's. Minor adjustments are made as necessary for actual expenses incurred and schedule changes in 8th Qtr.

[3] Amount paid from credit.

[4] Represents State Share of actual expenses through March plus forecasted amount (ref. Note 2).

TRLIA Quarterly Work Plan Budget

For Period July / August / September 2010

ELEMENT 6

Elements and Features	State Share Percentage	Revised Overall Budget [1]			Cumulative Expenses (through Jun, 2010)			Forecasted Remaining Budget			% of Total Budget Remaining	10th Quarterly Forecast			% of Remaining Budget	
		Total	State	Local	Total	State Share	Local Share	Total	State Share	Local Share		Total	State	Local		
Formula	a	b	c*	d = b-c	e	Credit f	Payments g	Local Share (after credit) h=e-f-g	i=b-e	j=c-f-g	k=d-h	l	m=lx	n=l-m		
			<small>*Based on Overall Workplan</small>		<small>[2]</small>	<small>[3]</small>	<small>[4]</small>	<small>*Not less than zero</small>								
Element 6: Feather River Land Management																
Feature 6.1: Env. Maintenance	82.8246%	\$105,000	\$86,966	\$18,034	\$117,812	\$0	\$97,578	\$20,235	-\$12,812	-\$10,612	-\$2,201	-12%	\$0	\$0	\$0	0%
Feature 6.2: Lease Back	82.8246%	\$50,000	\$41,412	\$8,588	\$20,780	\$0	\$17,211	\$3,569	\$29,220	\$24,201	\$5,019	58%	\$0	\$0	\$0	0%
Feature 6.3: Land Maintenance	82.8246%	\$2,150,000	\$1,280,908	\$869,092	\$60,000	\$0	\$49,695	\$10,305	\$2,090,000	\$1,231,213	\$858,787	97%	\$50,000	\$41,412	\$8,588	2%
Subtotal Element 6		\$2,305,000	\$1,409,286	\$895,714	\$198,593	\$0	\$164,484	\$34,109	\$2,106,407	\$1,244,802	\$861,605	91%	\$50,000	\$41,412	\$8,588	2%

"10QElem6"

[1] Revised per this 10th QWP to account for funding agreement modifications.

[2] Reflects costs incurred through submitted 7th QPR (December '09) with estimates of expenses forecasted in 8th and 9th QWP's. Minor adjustments are made as necessary for actual expenses incurred and schedule changes in 8th Qtr.

[3] Amount paid from credit.

[4] Represents State Share of actual expenses through March plus forecasted amount (ref. Note 2).

TRLIA Quarterly Work Plan Budget

For Period July / August / September 2010

ELEMENT 7

Elements and Features	State Share Percentage	Revised Overall Budget [1]			Cumulative Expenses (through Jun, 2010)				Forecasted Remaining Budget			% of Total Budget Remaining	10th Quarterly Forecast			% of Remaining Budget
		Total	State	Local	Total	State Share	Local Share	Total	State Share	Local Share	Total		State	Local		
		a	b	c*	d = b-c	e	Credit f	Payments g	h=e-f-g	i=b-e	j=c-f-g		k=d-h	l	m=lxa	
<i>Formula</i>			<small>*Based on Overall Workplan</small>		[2]	[3]	[4]	<small>*Not less than zero</small>								
Element 7: Project Management, Legal, Community Relations support, Land Management, and Overhead																
Feature 7.1: Salaries	76.3198%	\$1,249,737	\$953,797	\$295,940	\$1,170,812	\$373,722	\$519,840	\$277,251	\$78,925	\$60,236	\$18,690	6%	\$58,688	\$44,790	\$13,897	74%
Feature 7.2: Consulting	76.3198%	\$1,239,571	\$946,038	\$293,533	\$1,134,599	\$461,956	\$403,967	\$268,675	\$104,972	\$80,115	\$24,858	8%	\$58,688	\$44,790	\$13,897	56%
Feature 7.3: Legal	76.3198%	\$1,195,497	\$912,401	\$283,096	\$1,191,818	\$381,323	\$528,270	\$282,225	\$3,679	\$2,808	\$871	0%	\$29,344	\$22,395	\$6,949	798%
Feature 7.4: Travel	76.3198%	\$9,827	\$7,500	\$2,327	\$8,969	\$3,933	\$2,912	\$2,124	\$858	\$655	\$203	9%	\$0	\$0	\$0	0%
Feature 7.5: General	76.3198%	\$350,756	\$267,696	\$83,060	\$309,141	\$60,919	\$175,016	\$73,205	\$41,615	\$31,761	\$9,855	12%	\$14,672	\$11,198	\$3,474	35%
Feature 7.6: Insurance	76.3198%	\$701,375	\$535,288	\$166,087	\$700,733	\$174,173	\$360,625	\$165,935	\$642	\$490	\$152	0%	\$0	\$0	\$0	0%
Feature 7.7: Travel/Vehicle	76.3198%	\$26,273	\$20,051	\$6,221	\$18,552	\$6,230	\$7,928	\$4,393	\$7,721	\$5,893	\$1,828	29%	\$702	\$536	\$166	9%
Feature 7.8: Memberships	76.3198%	\$18,804	\$14,351	\$4,453	\$6,691	\$1,930	\$3,176	\$1,584	\$12,113	\$9,245	\$2,868	64%	\$0	\$0	\$0	0%
Subtotal Element 7		\$4,791,840	\$3,657,123	\$1,134,718	\$4,541,314	\$1,464,186	\$2,001,735	\$1,075,393	\$250,527	\$191,201	\$59,325	5%	\$162,094	\$123,709	\$38,384	65%

"10QElem7"

[1] Revised per this 10th QWP to account for funding agreement modifications.

[2] Reflects costs incurred through submitted 7th QPR (December '09) with estimates of expenses forecasted in 8th and 9th QWP's. Minor adjustments are made as necessary for actual expenses incurred and schedule changes in 8th Qtr.

[3] Amount paid from credit.

[4] Represents State Share of actual expenses through March plus forecasted amount (ref. Note 2).

TRLIA Quarterly Work Plan Budget

For Period July / August / September 2010

ELEMENT 9

Elements and Features	State Share Percentage	Revised Overall Budget [1]			Cumulative Expenses (through Jun, 2010)				Forecasted Remaining Budget			% of Total Budget Remaining	10th Quarterly Forecast			% of Remaining Budget
		Total	State	Local	Total	State Share		Local Share	Total	State Share	Local Share		Total	State	Local	
						Credit	Payments	(after credit)								
<i>Formula</i>	<i>a</i>	<i>b</i>	<i>c*</i>	<i>d = b-c</i>	<i>e</i>	<i>f</i>	<i>g</i>	<i>h=e-f-g</i>	<i>i=b-e</i>	<i>j=c-f-g</i>	<i>k=d-h</i>		<i>l</i>	<i>m=lx</i>	<i>n=l-m</i>	
			<small>*Based on Overall Workplan</small>		[2]	[3]	[4]	<small>*Not less than zero</small>								
Element 9: Feather River Segment 1 levee improvement																
Feature 9.1.1 - Design	70.0000%	\$1,395,322	\$976,725	\$418,597	\$1,217,099	\$740,120	\$111,849	\$365,130	\$178,223	\$124,756	\$53,467	13%	\$0	\$0	\$0	0%
Feature 9.1.2 - Permitting	70.0000%	\$355,934	\$249,154	\$106,780	\$323,086	\$112,717	\$113,443	\$96,926	\$32,848	\$22,994	\$9,854	9%	\$0	\$0	\$0	0%
Feature 9.1.3 - ROW Support	70.0000%	\$245,781	\$172,047	\$73,734	\$218,062	\$0	\$152,644	\$65,419	\$27,718	\$19,403	\$8,316	11%	\$15,000	\$10,500	\$4,500	54%
Feature 9.2 - Construction Mgt.	70.0000%	\$1,561,680	\$1,093,176	\$468,504	\$1,410,569	\$132,417	\$854,981	\$423,171	\$151,111	\$105,778	\$45,333	10%	\$0	\$0	\$0	0%
Feature 9.3 - Construction	70.0000%	\$10,318,414	\$7,222,890	\$3,095,524	\$9,144,331	\$2,258	\$6,398,775	\$2,743,299	\$1,174,082	\$821,858	\$352,225	11%	\$0	\$0	\$0	0%
Feature 9.4 - O&M Segment 1	70.0000%	\$92,597	\$64,818	\$27,779	\$16,029	\$0	\$11,220	\$4,809	\$76,569	\$53,598	\$22,971	83%	\$0	\$0	\$0	0%
Subtotal Element 7		\$13,969,728	\$9,778,810	\$4,190,918	\$12,329,177	\$987,512	\$7,642,912	\$3,698,753	\$1,640,551	\$1,148,386	\$492,165	12%	\$15,000	\$10,500	\$4,500	1%

"10QElem9"

[1] Revised per this 10th QWP to account for funding agreement modifications.

[2] Reflects costs incurred through submitted 7th QPR (December '09) with estimates of expenses forecasted in 8th and 9th QWP's. Minor adjustments are made as necessary for actual expenses incurred and schedule changes in 8th Qtr.

[3] Amount paid from credit.

[4] Represents State Share of actual expenses through March plus forecasted amount (ref. Note 2).

TRLIA Quarterly Work Plan Budget

For Period July / August / September 2010

ELEMENT 9A

Elements and Features	State Share Percentage	Revised Overall Budget [1]			Cumulative Expenses (through Jun, 2010)				Forecasted Remaining Budget			% of Total Budget Remaining	10th Quarterly Forecast			% of Remaining Budget
		Total	State	Local	Total	State Share		Local Share	Total	State Share	Local Share		Total	State	Local	
						Credit	Payments	(after credit)								
<i>Formula</i>	<i>a</i>	<i>b</i>	<i>c*</i>	<i>d = b-c</i>	<i>e</i>	<i>f</i>	<i>g</i>	<i>h=e-f-g</i>	<i>i=b-e</i>	<i>j=c-f-g</i>	<i>k=d-h</i>		<i>l</i>	<i>m=lx</i>	<i>n=l-m</i>	
			<small>*Based on Overall Workplan</small>		[2]	[3]	[4]	<small>*Not less than zero</small>								
Element 9A: Feather River Segment 1 Crack Repair																
Feature 1.1 - Engineering, Design,	70.0000%	\$675,000	\$472,500	\$202,500	\$83,139	\$0	\$58,197	\$24,942	\$591,861	\$414,303	\$177,558	88%	\$0	\$0	\$0	0%
Feature 1.2 - Right of Way Suppor	70.0000%	\$15,000	\$10,500	\$4,500	\$0	\$0	\$0	\$0	\$15,000	\$10,500	\$4,500	100%	\$0	\$0	\$0	0%
Feature 2 - Construction	70.0000%	\$1,300,000	\$910,000	\$390,000	\$364,483	\$0	\$255,138	\$109,345	\$935,517	\$654,862	\$280,655	72%	\$0	\$0	\$0	0%
Feature 3 - Operations & Maintena	70.0000%	\$10,000	\$7,000	\$3,000	\$10,000	\$0	\$7,000	\$3,000	\$0	\$0	\$0	0%	\$0	\$0	\$0	0%
Subtotal Element 7		\$2,000,000	\$1,400,000	\$600,000	\$457,622	\$0	\$320,335	\$137,287	\$1,542,378	\$1,079,665	\$462,713	77%	\$0	\$0	\$0	0%

"10QElem9A"

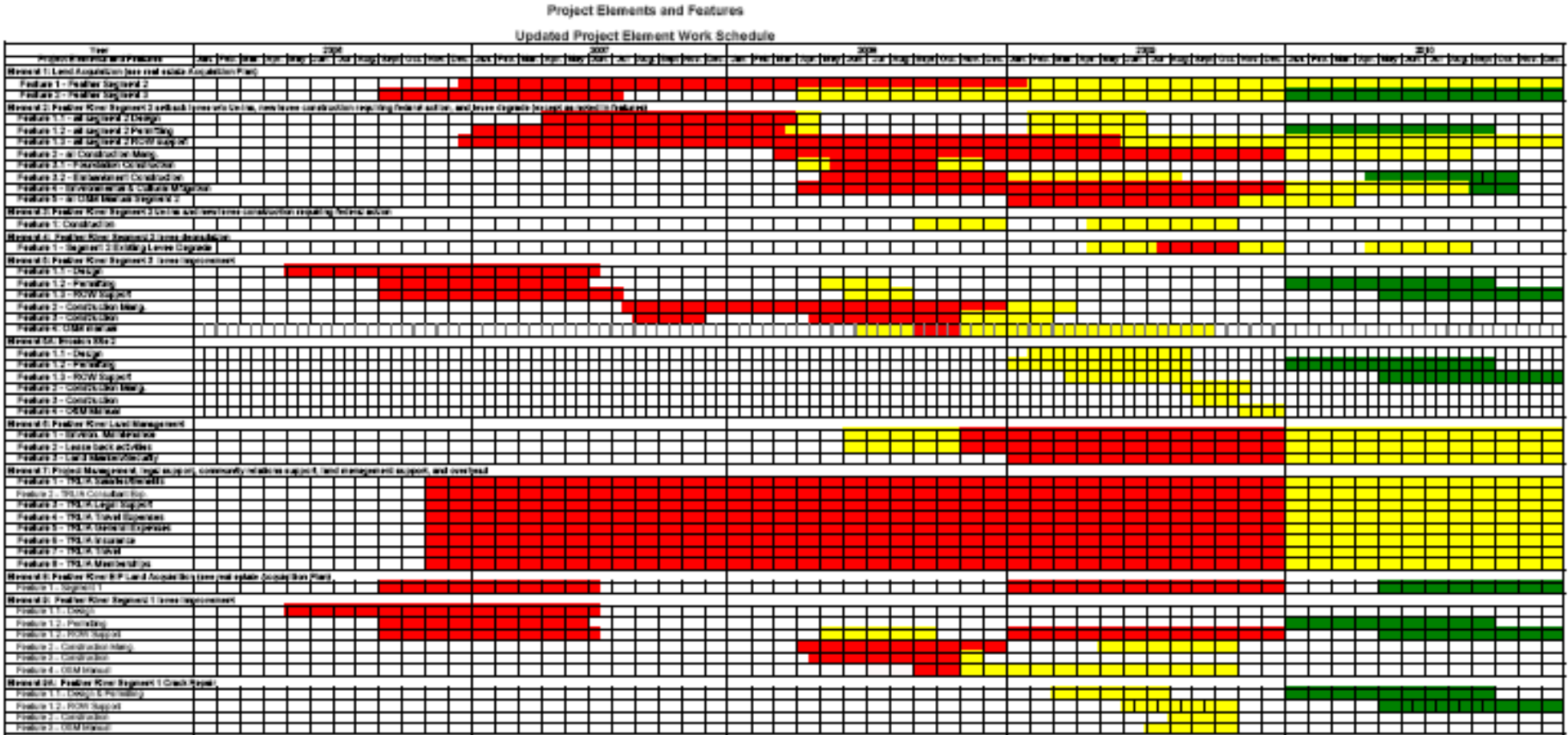
[1] Revised per this 10th QWP to account for funding agreement modifications.

[2] Reflects costs incurred through submitted 7th QPR (December '09) with estimates of expenses forecasted in 8th and 9th QWP's. Minor adjustments are made as necessary for actual expenses incurred and schedule changes in 8th Qtr.

[3] Amount paid from credit.

[4] Represents State Share of actual expenses through March plus forecasted amount (ref. Note 2).

6. Schedule Information by Project Element: Shown in the figure below is an updated Exhibit A (overall project schedule).



Red: Original Schedule in Exhibit A **Yellow:** Prior Quarter Adjustments **Green:** 10th Quarter Adjustments

- **A discussion on how the projected schedule compares to original or last reported schedule:**
 - Project Element 1 Feature 2 Feather Segment 3: Additional time was added to acquire 10-ft-wide levee access corridor
 - Project Element 2 Feature 1.2 Permitting: Additional time was added for FEMA levee certification
 - Project Element 2 Feature 3.2 Embankment Construction: Additional time was added to cover miscellaneous construction items. Levee construction is completed.
 - Project Element 4 Environmental and Cultural Mitigation: Additional time was added.
 - Project Element 5 Feature 1.2 Permitting: Additional time was added for FEMA levee certification
 - Project Element 5 Feature 1.3 Segment 2 Right of Way Support: Additional time was added to acquire 10-ft-wide levee access corridor
 - Project Element 5A Feature 1.2 Permitting: Additional time was added for FEMA levee certification
 - Project Element 5A Feature 1.3 Segment 2 Right of Way Support: Additional time was added to acquire 10-ft-wide levee access corridor
 - Project Element 8: Additional time was added to acquire 50-ft-wide levee access corridor
 - Project Element 9 Feature 1.2 Permitting: Additional time was added for FEMA levee certification
 - Project Element 9 Feature 1.3 Segment 2 Right of Way Support: Additional time was added to acquire 50-ft-wide levee access corridor
 - Project Element 9A Feature 1.1 Engineering and Construction Management: Additional time was added for FEMA levee certification
 - Project Element 9 Feature 1.2 Segment 2 Right of Way Support: Additional time was added to acquire 50-ft-wide levee access corridor

Attachments

1. Permit Status Update for Project Element 2, 3, 4, 5, 5A, 9, & 9A

**Attachment 1 – Updated Permit Tables for Project Elements 2, 3, 4, 5,
5A, 9, &9A**

<u>Project Element 2</u> Applicable Permit and Environmental Documentation (refer to exhibit A of overall TRLIA work plan)			
PERMITTING AGENCY	PERMIT	ACTION DONE	STATUS/COMMENTS
The Central Valley Flood Protection Board	Encroachment Permits	Yes	The CVFPB General Manager issued a phased permit (#18227) on April 7, 2008 that allows construction in non-federal jurisdictional areas
California Central Valley Flood Protection Board	Encroachment Permit – Vegetated Wave Buffer	No	Application submitted in September 2009; pending maintenance agreement with RD 784
California Central Valley Flood Protection Board	Encroachment Permit – Elderberry Mitigation Area	No	Application pending preparation of safe harbor agreement for elderberry maintenance in the Feather River floodway.
U.S. Fish and Wildlife Service	Endangered Species Act Compliance	Yes	Biological Opinion was approved on August 28, 2008
Native American Heritage Commission (NAHC)	Evaluation of effects on Native American burials or artifacts	Yes	Coordination with the NAHC was completed and MOA signed by all parties, on August 13, 2008
RWQCB, Region 5	National Pollution Discharge Elimination System (NPDES) Permit per Section 402 of the Clean Water Act	Yes	A NPDES permit (WDID # 5S5BC348901) was issued on 9/18/07 for Segments 1, 2, and 3.
Feather River Air Quality Management District (FRAQMD)	Authority to Construct	Yes	Contractor submitted Fugitive Dust Plan to FRAQMD
DFG	Streambed Alteration Agreement	Yes	The final Streambed Alteration Agreement was approved by DFG on January 2, 2008
Reclamation District 784 (RD 784)	Encroachment Permit	Yes	RD 784 is one of the project sponsors and coordination with RD 784

			regarding levee encroachments is ongoing. RD 784 signed the application for the Central Valley Flood Protection Board encroachment permit with no objections.
Yuba County	Grading Permit	Yes	Grading permit was received in May 2008
State Mining and Geology Board (SMGB)	Reclamation Plan	Yes	The Reclamation Plan was approved and SMGB mining permit (No. 91-58-0026) issued for Ella and Platter/JTS Borrow sites on Sept 22, 2009.
CEQA	EIR	Yes	EIR certified by the TRLIA board on February 6, 2007 and a Notice of Determination filed with the State Clearinghouse (Number 2006062071) on February 8, 2007
CEQA	EIR Addendum #1	Yes	EIR addendum for offsite Platter Borrow site
CEQA	EIR Addendum #2	Yes	EIR addendum for Ella offsite borrow site
Section 104 Credit Application	Future federal projects cost Sharing	Yes	CVFPB submitted a request on June 15, 2007 for \$154.3M Section 104 credit to the Sacramento District.
Section 104 Credit Approval (N/A)	Future federal projects cost sharing	Yes	At the March 21 CVFPB meeting DWR stated it would waive the need for 104 credits – DWR waiver letter issued on May 2, 2008

Project Element 3 Applicable Permit and Environmental Documentation (refer to exhibit A of overall TRLIA work plan)

PERMITTING AGENCY	PERMIT	Action Done	STATUS/COMMENTS
The Central Valley Flood Protection Board	Encroachment Permits	Yes	The CVFPB General Manager issued a phased permit (#18227) on April 7, 2008. The permit has two parts: Part A – Project Element 2 work to be done outside of jurisdictional waters of the U.S., and Part B – Project Element 3 work to be within jurisdictional waters of the U.S.
U.S. Army Corps of Engineers (Corps)	Section 10 Permit	Yes	Navigable waterways not affected
Corps	Section 404 Permit	Yes	Corps of Engineers signed the Feather River Setback Levee Environmental

			Impact Statement 404 permit Record of Decision on December 8, 2008 and the issued the final Feather River Setback 404 permit on December 15, 2008.
Corps	408 approval of project levee alteration	Yes	Corps of Engineers signed the Feather River Setback Levee Environmental Impact Statement 408 Authorization Record of Decision on December 8, 2008 and issued The Feather River Setback 408 Authorization on December 8, 2008.
Corps	Wetlands Delineation	Yes	Completed March 11, 2008
Corps	Wetlands Delineation	Yes	Amended September 30, 2008
Regional Water Quality Control Board (RWQCB); Central Valley Region (Region 5)	Section 401 Water Quality Certification	Yes	The Regional Water Quality Control Board signed the Section 401 Water Quality permit on November 24, 2008. Copy available on the
RWQCB, Region 5	National Pollution Discharge Elimination System (NPDES) Permit per Section 402 of the Clean Water Act	Yes	A NPDES permit (WDID # 5S5BC348901) was issued on 9/18/07 for Segments 1, 2, and 3.
Feather River Air Quality Management District (FRAQMD)	Authority to Construct	Yes	Contractor submitted a Fugitive Dust Plan to the FRAQMD prior to initiating construction on Segment 2.
U.S. Fish and Wildlife Service	Endangered Species Act Compliance	Yes	Biological Opinion was approved on August 28, 2008
National Marine Fisheries Service (NMFS)	Endangered Species Act Compliance	Yes	NMFS sent letter on December 13, 2007 concurring that setback levee is not likely to adversely affect any fish species under NMFS jurisdiction.
California Department of Fish and Game (DFG)	California Endangered Species Act Compliance	Yes	Section 2081 Permit received in August 2009
DFG	Streambed Alteration Agreement	Yes	The final Streambed Alteration Agreement was approved by DFG on January 2, 2008.
California State Lands Commission (SLC)	Encroachment Permit	Yes	All project facilities are outside SLC jurisdiction.
California Department of Forestry	Conversion of timberland to other uses.	Yes	No timberland conversion is required for the project.
The Resources Agency	Cancellation of Williamson Act Contract	Yes	No Williamson Act contract cancellations are required to implement the project.

California Department of Transportation (Caltrans)	Encroachment on or across a State highway	Yes	Project facilities do not encroach onto a State highway. However, construction equipment will likely use State Route 70 (SR 70). Development and implementation of a traffic control plan is being coordinated with Caltrans.
Native American Heritage Commission (NAHC)	Evaluation of effects on Native American burials or artifacts	Yes	Coordination with the NAHC was completed and MOA signed by all parties, on August 13, 2008.
State Office of Historic Preservation (SHPO)	Evaluation of effects on historic and cultural resources	Yes	Coordination with the SHPO was completed and MOA signed by all parties, on August 13, 2008.
Reclamation District 784 (RD 784)	Encroachment Permit	Yes	RD 784 is one of the project sponsors and coordination with RD 784 regarding levee encroachments is ongoing. RD 784 signed the application for the Reclamation Board encroachment permit with no objections.
Yuba County	Grading Permit	Yes	Grading permit was received in May 2008
State Mining and Geology Board (SMGB)	Reclamation Plan	Yes	The Reclamation Plan was approved and SMGB mining permit (No. 91-58-0026) issued for Ella and Platter/JTS Borrow sites on Sept 22, 2009.
CEQA	EIR	Yes	EIR certified by the TRLIA board on February 6, 2007 and a Notice of Determination filed with the State Clearinghouse (Number 2006062071) on February 8, 2007.
NEPA	EIS	Yes	Corps of Engineers Finalized the Environmental Impact Statement and signed the Record of Decision on December 8, 2008.
Section 104 Credit	Future federal projects cost Sharing	Yes	The Section 104 credit for this Project Element was issued by the Corps on April 3, 2009

Project Element 4 Applicable Permit and Environmental Documentation (refer to exhibit A of overall TRLIA work plan)			
PERMITTING AGENCY	PERMIT	Action Done	STATUS/COMMENTS
California Central Valley Flood Protection Board	Encroachment Permit	Yes	CVFPB issued permit No 18430 at the July 2009 Board meeting
U.S. Army Corps of Engineers (Corps)	Section 10 Permit	Yes	Navigable waterways not affected
Corps	Section 404 Permit	Yes	Corps of Engineers signed the Feather River Setback Levee Environmental Impact Statement 404 permit Record of Decision on December 8, 2008 and the issued the final Feather River Setback 404 permit on December 15, 2008.
Corps	408 approval of project levee alteration	Yes	Corps of Engineers signed the Feather River Setback Levee Environmental Impact Statement 408 Authorization Record of Decision on December 8, 2008 and issued The Feather River Setback 408 Authorization on December 8, 2008.
Corps	Wetlands Delineation	Yes	Completed March 11, 2008
Corps	Wetlands Delineation	Yes	Amended September 30, 2008
Regional Water Quality Control Board (RWQCB); Central Valley Region (Region 5)	Section 401 Water Quality Certification	Yes	The Regional Water Quality Control Board signed the Section 401 Water Quality permit on November 24, 2008.
RWQCB, Region 5	National Pollution Discharge Elimination System (NPDES) Permit per Section 402 of the Clean Water Act	Yes	A NPDES permit (WDID # 5S5BC348901) was issued on 9/18/07 for Segments 1, 2, and 3.
Feather River Air Quality Management District (FRAQMD)	Authority to Construct	Yes	Contractor submitted a Fugitive Dust Plan to the FRAQMD prior to initiating construction on Segment 2.
U.S. Fish and Wildlife Service	Endangered Species Act Compliance	Yes	Biological Opinion was approved on August 28, 2008
National Marine Fisheries Service (NMFS)	Endangered Species Act Compliance	Yes	NMFS sent letter on December 13, 2007 concurring that setback levee is not likely to adversely affect any fish species under NMFS jurisdiction.
California Department of Fish and Game (DFG)	California Endangered Species Act Compliance	Yes	Section 2081 Permit received in August 2009
DFG	Streambed Alteration	Yes	The final Streambed Alteration

	Agreement		Agreement was approved by DFG on January 2, 2008.
California State Lands Commission (SLC)	Encroachment Permit	Yes	All project facilities are outside SLC jurisdiction.
California Department of Forestry	Conversion of timberland to other uses.	Yes	No timberland conversion is required for the project.
The Resources Agency	Cancellation of Williamson Act Contract	Yes	No Williamson Act contract cancellations are required to implement the project.
California Department of Transportation (Caltrans)	Encroachment on or across a State highway	Yes	Project facilities do not encroach onto a State highway. However, construction equipment will likely use State Route 70 (SR 70). Development and implementation of a traffic control plan is being coordinated with Caltrans.
Native American Heritage Commission (NAHC)	Evaluation of effects on Native American burials or artifacts	Yes	Coordination with the NAHC was completed and MOA signed by all parties, on August 13, 2008.
State Office of Historic Preservation (SHPO)	Evaluation of effects on historic and cultural resources	Yes	Coordination with the SHPO was completed and MOA signed by all parties, on August 13, 2008.
Reclamation District 784 (RD 784)	Encroachment Permit	Yes	RD 784 is one of the project sponsors and coordination with RD 784 regarding levee encroachments is ongoing. RD 784 signed the application for the Reclamation Board encroachment permit with no objections.
Yuba County	Grading Permit	Yes	Grading permit was received in May 2008
State Mining and Geology Board (SMGB)	Reclamation Plan	Yes	The Reclamation Plan was approved and SMGB mining permit (No. 91-58-0026) issued for Ella and Platter/JTS Borrow sites on Sept 22, 2009.
CEQA	EIR	Yes	EIR certified by the TRLIA board on February 6, 2007 and a Notice of Determination filed with the State Clearinghouse (Number 2006062071) on February 8, 2007.
NEPA	EIS	Yes	Corps of Engineers Finalized the Feather River Setback Levee Environmental Impact Statement and

			signed the Record of Decision on December 8, 2008.
Section 104 Credit	Future federal projects cost Sharing	Yes	The Section 104 credit for this Project Element was issued by the Corps on April 3, 2009

Project Element 5 Applicable Permit and Environmental Documentation (refer to exhibit A of overall TRLIA work plan)			
PERMITTING AGENCY	PERMIT	ACTION DONE	STATUS/COMMENT
Central Valley Flood Protection Board (CVFPB)	Encroachment Permit	Yes	Permit No. 18170 BD issued on August 7, 2007.
Central Valley Flood Protection Board (CVFPB)	Encroachment Permit	Yes	Permit No. 18170 BD permit modified for seepage berm to provide final fix for cutoff wall trench cave-in, issued on 7/17/08
U.S. Army Corps of Engineers (Corps)	Section 10 Permit	Yes	Navigable waterways not affected
Corps	Section 404 Permit	Yes	No jurisdictional features affected. Corps issued "Letter of No Permit Required" on July 23, 2007
Corps	408 Approval of project levee alteration	Yes	Finding of No Significant Impact (FONSI) issued by Corps of Engineers on July 11, 2007. Corps approved Section 408 alteration on August 2, 2007.
Regional Water Quality Control Board (RWQCB); Central Valley Region (Region 5)	Section 401 Water Quality Certification	Yes	No 404 permit triggering 401 compliance. RWQCB sent email on August 15, 2007 verifying that 401 certification was not necessary
RWQCB, Region 5	National Pollution Discharge Elimination System (NPDES) Permit per Section 402 of the Clean Water Act	Yes	A NPDES permit (WDID # 5S5BC348901) was issued on 9/18/07. A Storm water Pollution Prevention Plan (SWPPP) has been developed and is being followed.
Feather River Air Quality Management District (FRAQMD)	Authority to Construct	Yes	Contractor's Fugitive Dust Plan has been developed and submitted to the FRAQMD.
U.S. Fish and Wildlife Service	Endangered Species Act Compliance	Yes	Project design and mitigation measures prevent take of threatened and endangered species. FWS sent a letter on May 7, 2007 agreeing that there were no impacts to any

			endangered species.
National Marine Fisheries Service	Endangered Species Act Compliance	Yes	Project will have no affect on fishery resources and habitats.
California Department of Fish and Game (DFG)	California Endangered Species Act Compliance	Yes	Project design and mitigation measures prevent take of threatened and endangered species.
DFG	Streambed Alteration Agreement	Yes	All ground disturbances is above the Feather River ordinary high water mark. Neither the bed nor bank of the river will be disturbed. DFG sent letter on May 2, 2007 verifying that a Streambed Alteration Agreement was not required.
California State Lands Commission (SLC)	Encroachment Permit	Yes	All ground disturbance is above the Feather River ordinary high water mark and outside SLC jurisdiction.
California Department of Forestry	Conversion of timberland to other uses.	Yes	No timberland conversion is required for the project.
The Resources Agency	Cancellation of Williamson Act Contract	Yes	No Williamson Act contract cancellations are required to implement the project.
California Department of Transportation (Caltrans)	Encroachment on or across a State highway	Yes	Project facilities do not encroach onto a State highway. However, construction equipment will likely use State Route 70 (SR 70). Development and implementation of a traffic control plan is being coordinated with Caltrans.
Caltrans	Encroachment on Caltrans property	Yes	A portion of a stability berm encroaches a short distance onto property owned by Caltrans used for habitat mitigation. A real estate easement for this berm was obtained from Caltrans. No adverse effects to protected habitats occur.
Native American Heritage Commission (NAHC)	Evaluation of effects on Native American burials or artifacts	Yes	Coordination with the NAHC has occurred and no known Native American sites or sensitive areas would be affected by the project
State Office of Historic Preservation (SHPO)	Evaluation of effects on historic and cultural resources	Yes	No known sensitive historic or cultural resources would be affected by the project. SHPO sent letter on July 16, 2007 agreeing that no impacts to historic or cultural resources were occurring.

Reclamation District 784 (RD 784)	Encroachment Permit	Yes	RD 784 is one of the project sponsors and coordination with RD 784 regarding levee encroachments is ongoing. RD 784 signed the application for a CVFPB encroachment permit
Yuba County	Grading Permit	Yes	Yuba County is one of the project sponsors and coordination with the County regarding construction of this project continues.
CEQA	EIR Processed for Various Permits	Yes	EIR certified by the TRLIA board on February 6, 2007 and a Notice of Determination filed with the State Clearinghouse (Number 2006062071) on February 8, 2007
CEQA	EIR Addendum # 2	Yes	EIR addendum for the Seepage berm addition needed to provide the final solution to the cutoff wall trench failure.
Section 104 Credit	Future federal projects cost sharing	Yes	\$32.7 M Section 104 credit approved by Corps HQ on August 7, 2007

Project Element 5A: Feather River Erosion Site 2

PERMITTING AGENCY	PERMIT	ACTION DONE	STATUS/COMMENT
Central Valley Flood Protection Board	Encroachment Permits	Yes	Encroachment permit No. 18479 issued on September 10, 2009
Corps	Section 404 Permit	Yes	Obtained Nationwide Permit, application submitted to Corps on June 25, 2009
Corps	Wetlands Delineation	Yes	Delineation submitted to Corps on May 27, 2009
Corps	408 approval of project levee alteration	Yes	Corps does not consider this as eligible under the Section 408 approval given for Segments 1 & 3. Per discussion with the Corps, they will approve work under Section 208 authority when they comment on the CVFPB Encroachment Permit Application.
Regional Water Quality Control Board (RWQCB); Central Valley Region (Region 5)	Section 401 Water Quality Certification	Yes	Obtained on July 9, 2009
RWQCB, Region 5	National Pollution	Yes	TRLIA has a current WDID #

	Discharge Elimination System (NPDES) Permit per Section 402 of the Clean Water Act		5S5BC348901 that was issued by the Regional Water Quality Control Board. The permit covers Feather River Segments 1, 2, and 3 and encompasses the Erosion Site. This permit is current.
Feather River Air Quality Management District (FRAQMD)	Authority to Construct	Yes	Used Documentation provided for Project Element 5
U.S. Fish and Wildlife Service	Endangered Species Act Compliance (Biological Opinion)	Yes	Biological opinion prepared, take avoided, no Incidental Take authorization needed.
National Marine Fisheries Service (NMFS)	Endangered Species Act Compliance	Yes	Biological opinion prepared, take avoided, no Incidental Take authorization needed.
California Department of Fish and Game (DFG)	California Endangered Species Act Compliance (2081)	Yes	No potential take of State listed species.
DFG	Streambed Alteration Agreement	Yes	Obtained on July 9, 2009
Native American Heritage Commission (NAHC)	Evaluation of effects on Native American burials or artifacts	Yes	Cultural resources surveys and consultation with Native American groups have found no evidence of burials or artifacts
State Office of Historic Preservation (SHPO)	Evaluation of effects on historic and cultural resources	Yes	Cultural resources surveys and consultation with Native American groups have found no evidence of significant historic or cultural resources
Reclamation District 784 (RD 784)	Encroachment Permit	Yes	RD 784 is one of the project sponsors and coordination with RD 784 regarding levee encroachments is ongoing. RD 784 signed the application for the Reclamation Board encroachment permit with minor conditions.
Yuba County	Grading Permit	Yes	Used Documentation provided for Project Element 5

State Mining and Geology Board (SMGB)	SMARA Permit	Yes	The Reclamation Plan was approved and SMGB mining permit (No. 91-58-0026) issued for Ella and Platter/JTS Borrow sites on Sept 22, 2009. Used Ella Site.
CEQA	EIR	Yes	ISIMND certified by TRLIA Board on 10/17/06
NEPA	EIS	Yes	No federal action constituting a NEPA trigger
Section 104 Credit	Future federal projects cost sharing	Yes	Work is not eligible for Section 104 Credit because it being accomplished under Section 208 authority and was not approved under Section 408 authority.

Project Element 9 & 9A Permit and Environmental Documentation			
PERMITTING AGENCY	PERMIT	ACTION DONE	STATUS/COMMENT
The Central Valley Flood Protection Board	Encroachment Permit	Yes	Permit No. 18170 BD issued on August 7, 2007.
The Central Valley Flood Protection Board	Encroachment Permit	Yes	Permit No. 18170 BD modified for design changes, issued on 7/17/08
U.S. Army Corps of Engineers (Corps)	Section 10 Permit	Yes	Navigable waterways not affected
Corps	Section 404 Permit	Yes	No jurisdictional features affected. Corps issued "Letter of No Permit Required" on July 23, 2007. Subsequently, a Nationwide permit was received in July 2008 allowing repairs to sinkholes observed on the waterside toe of the existing levee in a reach of the Site 7 Extension segment of levee.
Corps	408 Approval of project levee alteration	Yes	Finding of No Significant Impact (FONSI) issued by Corps of Engineers on July 11, 2007. Corps approved Section 408 alteration on August 2, 2007. Subsequently, water quality certification was received in July 2008 allowing repairs to sinkholes observed on the waterside

			toe of the existing levee in a reach of the Site 7 Extension segment of levee.
Regional Water Quality Control Board (RWQCB); Central Valley Region (Region 5)	Section 401 Water Quality Certification	Yes	No 404 permit triggering 401 compliance. RWQCB sent email on August 15, 2007 verifying that 401 certification was not necessary
RWQCB, Region 5	National Pollution Discharge Elimination System (NPDES) Permit per Section 402 of the Clean Water Act	Yes	A NPDES permit (WDID # 5S5BC348901) was issued on 9/18/07. A Storm water Pollution Prevention Plan (SWPPP) has been developed and is being followed.
Feather River Air Quality Management District (FRAQMD)	Authority to Construct	Yes	Contractor's Fugitive Dust Plan has been developed and submitted to the FRAQMD.
U.S. Fish and Wildlife Service	Endangered Species Act Compliance	Yes	Project design and mitigation measures prevent take of threatened and endangered species. FWS sent a letter on May 7, 2007 agreeing that there were no impacts to any endangered species.
National Marine Fisheries Service	Endangered Species Act Compliance	Yes	Project will have no affect on fishery resources and habitats.
California Department of Fish and Game (DFG)	California Endangered Species Act Compliance	Yes	Project design and mitigation measures prevent take of threatened and endangered species.
DFG	Streambed Alteration Agreement	Yes	All ground disturbance is above the Feather River ordinary high water mark. Neither the bed nor bank of the river will be disturbed. DFG sent letter on May 2, 2007 verifying that a Streambed Alteration Agreement was not required. Subsequently, a streambed authorization permit was received in June 2008 allowing repairs to sinkholes observed on the waterside toe of the existing levee in a reach of the Site 7 Extension segment of levee.
California State Lands Commission (SLC)	Encroachment Permit	Yes	All ground disturbance is above the Feather River ordinary high water mark and outside SLC jurisdiction.

California Department of Forestry	Conversion of timberland to other uses.	Yes	No timberland conversion is required for the project.
The Resources Agency	Cancellation of Williamson Act Contract	Yes	No Williamson Act contract cancellations are required to implement the project.
California Department of Transportation (Caltrans)	Encroachment on or across a State highway	Yes	Project facilities do not encroach onto a State highway. However, construction equipment will likely use State Route 70 (SR 70). Development and implementation of a traffic control plan is being coordinated with Caltrans.
Caltrans	Encroachment on Caltrans property	Yes	A portion of a stability berm encroaches a short distance onto property owned by Caltrans used for habitat mitigation. A real estate easement for this berm was obtained from Caltrans. No adverse effects to protected habitats occur.
Native American Heritage Commission (NAHC)	Evaluation of effects on Native American burials or artifacts	Yes	Coordination with the NAHC has occurred and no known Native American sites or sensitive areas would be affected by the project
State Office of Historic Preservation (SHPO)	Evaluation of effects on historic and cultural resources	Yes	No known sensitive historic or cultural resources would be affected by the project. SHPO sent letter on July 16, 2007 agreeing that no impacts to historic or cultural resources were occurring.
Reclamation District 784 (RD 784)	Encroachment Permit	Yes	RD 784 is one of the project sponsors and coordination with RD 784 regarding levee encroachments is ongoing. RD 784 signed the application for a CVFPB encroachment permit with no objections.
Yuba County	Grading Permit	Yes	Yuba County is one of the project sponsors and coordination with the County regarding construction of this project continues.
CEQA	EIR Processed for Various Permits	Yes	EIR certified by the TRLIA board on February 6, 2007 and a Notice of Determination filed with the State Clearinghouse (Number 2006062071)

			on February 8, 2007
CEQA	CEQA Addendum #2	Yes	EIR addendum for the Water Blanket modifications.
Section 104 Credit	Future federal projects cost sharing	Yes	\$32.7 M Section 104 credit approved by Corps HQ on August 7, 2007