



**TRLIA**  
**8th QUARTERLY**  
**PROGRESS REPORT**  
**FOR**  
**FEATHER RIVER LEVEE**  
**IMPROVEMENT PROJECT**

- 1. Quarterly Progress Report (QPR) for 8th Quarter: January 1 – March 31, 2010**
- 2. Date of Report: May 25, 2010**
- 3. Purpose of Quarterly Report:** This report summarizes the work completed in the 8th quarter. **Note:** On March 25, 2010 the State Contracting Office (DGS/OLS) approved the Feather River EIP Funding Agreement Amendment and extended the agreement to June 30, 2012. This is the first Quarterly Progress Report since that approval. The modified funding agreement allows the State to provide funding up to \$154.79 million (original amount was \$138.5 million). The modified funding agreement incorporated the following Project Elements into the funding agreement:
  - Element 5A: Feather River Segment 3 Erosion Site 2
  - Element 8: Feather River Segment 1 land acquisition (was Associated Project Element 1)
  - Element 9: Feather River Segment 1 levee improvement (was Associated Project Element 2)
  - Element 9A: Feather River Segment 1 crack repair
- 4. Specific Project Element Information:**
  - **Major accomplishments this quarter (i.e. tasks completed, milestones met, meetings held or attended, press releases, etc.)**
    - All Project Elements: DGS approved the Modified Funding agreement on March 25, 2010. The State cost share was increased by \$16.28 million, comprised of 70 percent of \$16.6 million for Segment 1, 82.8246 percent of \$4.9 million for additional work in Segment 2, and 70 percent of \$0.855

million for additional work in Segment 3. The total project cost was revised from the \$191.4 million to \$200.5 million with the State cost-share capped at \$154.8 million.

- The Sacramento Section of the American Society of Civil Engineers (ASCE) awarded its “2009 Outstanding Engineering Award” for Flood Control to the Three Rivers Levee Improvement Authority for its Feather River Setback Levee.
- Significant Events, media releases, and media coverage during the Quarter: See Attachment 1.
  - January 27, 2010 Media/Press Release: South Yuba Levee Project Named Best of 2009 By Civil Engineers

● **Engineering and Construction matters:**

- **All Project Elements:** DGS approved the Modified Funding agreement on March 25, 2010. The State cost share was increased by \$16.28 million, comprised of 70 percent of \$16.6 million for Segment 1, 82.8246 percent of \$4.9 million for additional work in Segment 2, and 70 percent of \$0.855 million for additional work in Segment 3. The total project cost was revised from the \$191.4 million to \$200.5 million with the State cost-share capped at \$154.8 million.
- **Project Element 1 - Land Acquisition:**
  - **Feature 1 (Segment 2/Setback levee):** The information below reflects the Real Estate actions accomplished in the 7<sup>th</sup>, 8<sup>th</sup>, and future Quarters.
    - Listed below is the status of the eminent domain settlements in the 7<sup>th</sup> Quarter.

<u>Eminent Domain Case</u>	<u>Deposit of Probable Compensation</u>	<u>Settlement</u>	<u>Relocation Expense</u>
APN 014-250-027 & 028 (Naumes)	\$15,580,000	\$17,500,000 plus statutory interest and court costs	\$0
APN 013-010-010, 34, & 35 (Danna)	\$1,455,000	Jury verdict of \$1,266,625 plus statutory interest and court costs	\$0
APN 013-010-014 (Davitt)		Appeal resolved via mediation	
APN 014-250-029 (Thomas Rice)	\$155,000	\$205,000 and three miscellaneous items	\$0

- ✓ Naumes: The final court documents were provided to DWR in March 2010. It is anticipated that DWR will reimburse the State share to TRLIA during the 9<sup>th</sup> Quarter.
- ✓ Danna: The final court documents were received in February 2010. The amount owed by Danna after statutory interest and court costs are deducted is \$161,899.83. TRLIA agreed to the following items in order to avoid further legal costs due to Danna appealing the court decision:
  - Reduce the amount owed by \$20,000
  - Danna pays the amount owed of \$141,899.83 in 3 equal installments over 18 months: 1/3 on June 15, 2010, 1/3 on December 15, 2010 and 1/3 on June 15, 2011
  - No payment of interest
- ✓ Davit: The returned \$65,228.18 was received by TRLIA during the quarter. This revenue will be used to offset future construction funding provided by State. Further discussions and details on this matter will be worked out between TRLIA and DWR in the coming quarter.
- ✓ Thomas Rice: Final Settlement with the Rices is still pending. The Rices are negotiating with TRLIA on extending the length of time the peach trees within the levee access corridor can stay. In the 7<sup>th</sup> Quarter TRLIA had agreed to settle with Thomas Rice for \$205,000 and three miscellaneous items. The three items are: 1) TRLIA to prepare and submit a lot line adjustment to the County, 2) TRLIA prepare and submit paperwork to the County to limit the use of Plumas Ave from Rice house to Setback levee, 3) Fence the area containing peach trees within the TRLIA levee easement right of way.
- ✓ Herold: TRLIA settled with the property owner during the 6th quarter and the property owner has been paid. Because additional property was sought, TRLIA had to re-serve the other parties who had an interest in the property and who had previously disclaimed or defaulted. Services were completed in the 8th Quarter and defaults will be entered in the 9th Quarter. It is anticipated that a final judgment will be entered and final order of condemnation recorded by June 2010.
- ✓ Heir Trust: The final settlement documents were received in January 2010. The judgment has been entered and the final order of condemnation recorded. The owners were paid the settlement sum in the 9th Quarter and the final accounting package will be submitted to the State for reimbursement in June 2010.

- Listed below is the status of the eminent domain settlements in the 8<sup>th</sup> Quarter: None
- Below is a list of the remaining eminent domain cases and the projected trial date. The parties will exchange updated appraisal information 90 days before trial unless an agreement has been reached to vary that date. The following lists the scheduled trial and exchange dates for those cases, and the amount of probable compensation TRLIA deposited with the State based on its pre-condemnation appraisals.
  1. APN 014-370-006 and 039 (Anderson) Trial 5/4/10 Exchange 2/26/10 Deposit \$321,000. Significant settlement discussions occurred in the 8<sup>th</sup> Quarter. Settlement occurred in 9<sup>th</sup> Quarter and the trial date was vacated.
  2. APN 014-290-004 (Heir Family) Trial 6/29/10 Exchange Completed Deposit \$267,000
  3. APN 016-010-016 (S. Nieschulz) Trial 8/31/10 Exchange 6/2/10 Deposit \$1,335,000
  4. APN 016-010-006 (L. Nieschulz) Trial 8/31/10 Exchange 6/2/10 Deposit \$17,200
  5. APN 016-060-001 (Foster Bar) Trial 11/16/10 Exchange 8/18/10 Deposit \$100,000
  6. APN 016-010-008 (Foster House) Trial 11/16/10 Exchange 8/18/10 Deposit \$23,000
  7. APN 014-370-029 and 6 others (Foster Ranch) Trial 11/16/10 Exchange 8/18/10 Deposit \$4,830,000
  8. APN 013-010-013 (Mann) Trial 3/29/11 Exchange 12/29/10 Deposit \$1,250,000
  9. APN 014-370-020 (Hadley) Trial & Exchange Not Set Deposit \$375,000. Significant settlement discussions occurred in the 8<sup>th</sup> Quarter – anticipate settlement in 9<sup>th</sup> Quarter and trial date to be vacated

- **Feature 2 (Segment 3):** The information below reflects the Real Estate actions accomplished in the 7<sup>th</sup>, 8<sup>th</sup>, and future Quarters.

- Listed below are the eminent domain settlements in the 7<sup>th</sup> Quarter.

<u>Eminent Domain Case</u>	<u>Deposit of Probable Compensation</u>	<u>Settlement</u>
APN 020-360-002 (Khang)	\$32,500	\$67,500

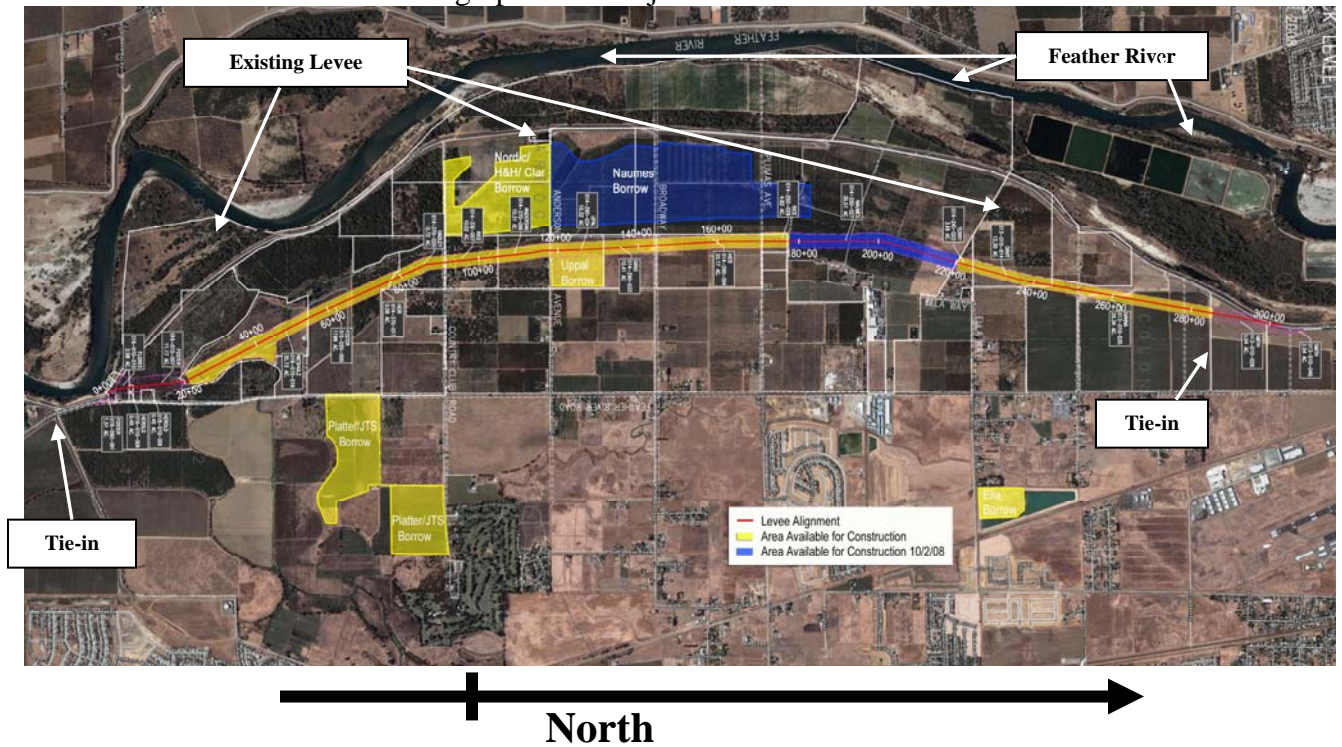
- ✓ Khang: The judgment was entered in February 2010 and property owners were paid the settlement sum. The final order of condemnation was recorded on March 22, 2010. A final accounting package will be submitted to the State for reimbursement in May 2010.

- During the 9<sup>th</sup> Quarter TRLIA anticipates modifying the Segment 3 real estate plan to acquire a landside 10-ft-wide levee O&M toe access corridor. Acquisition of the O&M corridor will most likely occur through 2011.
  
- **Project Element 2: Feather River Segment 2 setback levee without tie-ins and new levee construction requiring federal action (except as noted in features):**
  - Feature 1.1 Design: This feature is completed.
  - Feature 1.2 Permitting: TRLIA Consultants prepared Levee System Certification documents during this Quarter. TRLIA anticipates submitting 100-year FEMA certification documentation to FEMA for Project Elements 2, 3, 5, 5A, 9, and 9A in May 2010.
  - Feature 1.3 Right of Way Support: Both legal and real estate activity continued during this quarter to support the ongoing land acquisition activities associated with Project Element 1 Feature 1.
  - Feature 2: Construction Management continued this Quarter to match the level of work associated with degrade of the existing levee (Project Element 4) and Environmental work (Project Element 2, Feature 4). Close out documentation preparation continued this Quarter see list below.
    - Design Report: submitted January 2008; Addendum 1 April 2008
    - Design Drawings and Specifications used for construction: submitted April 2008
    - Permits: previously submitted. See permit table that is attached for listing.
    - CEQA and NEPA documents: previously submitted. See permit table for listing (attachment 2).
    - As-built drawings: As-built drawings for the completed levee are scheduled to be submitted during the 9<sup>th</sup> Quarter (May 2010). As-built drawings for non levee Project Element 2, 3, and 4 work items are anticipated to be submitted in the 11<sup>th</sup> Quarter.
  - Feature 3 – Construction of Setback Levee – not requiring federal authorization.
    - Table 1 below presents a completed summary of foundation and embankment quantities.

**Table 1: Project Element 2 Work Summary**

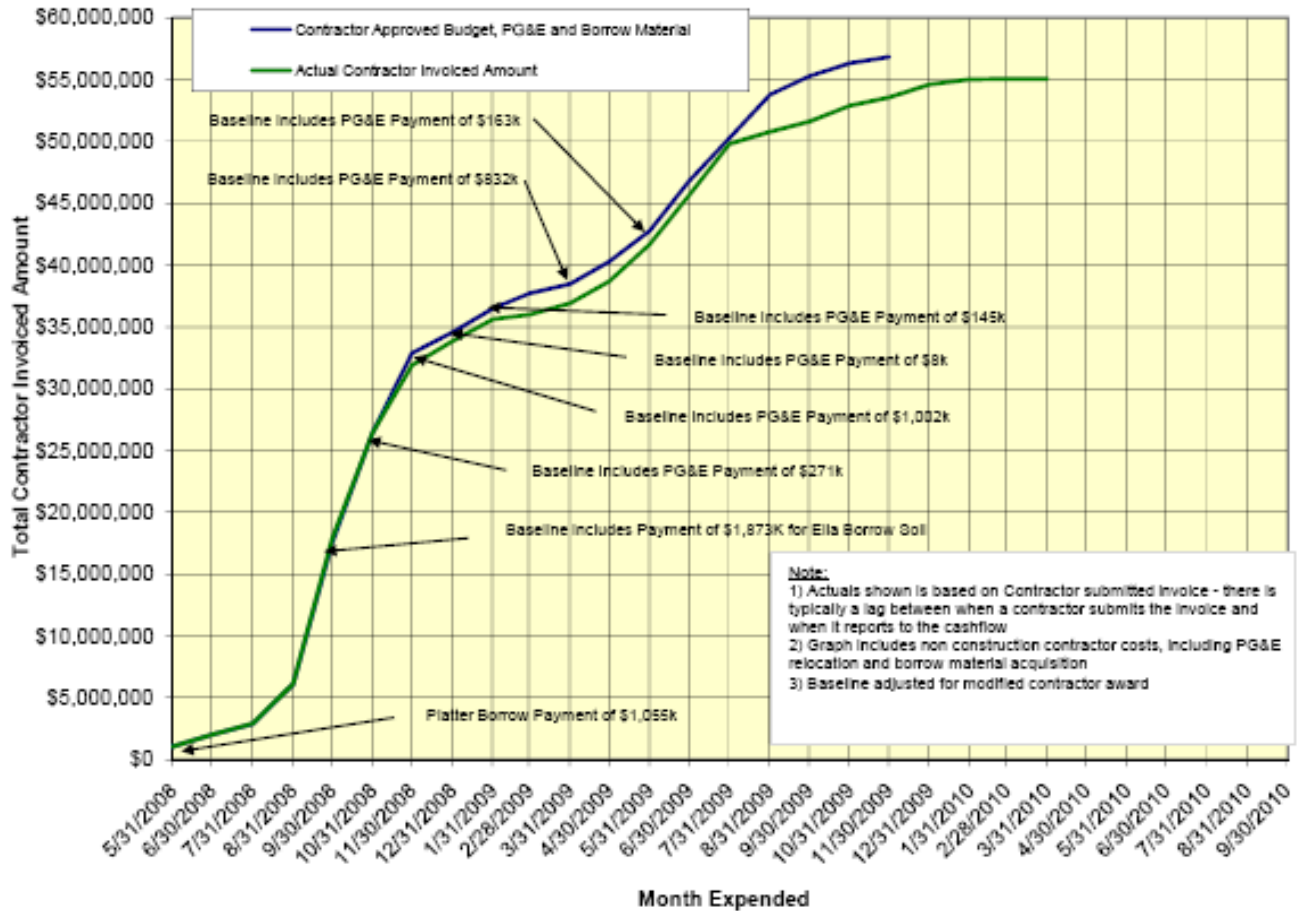
<b>Completion Quantities</b>			
Location	lineal feet of foundation	sf of cutoff wall	cubic yards embankment
<b>Element 2</b>	<b>26,430</b>	<b>1,408,200</b>	<b>3,000,000</b>

Below is a graphic for Project Element 2.



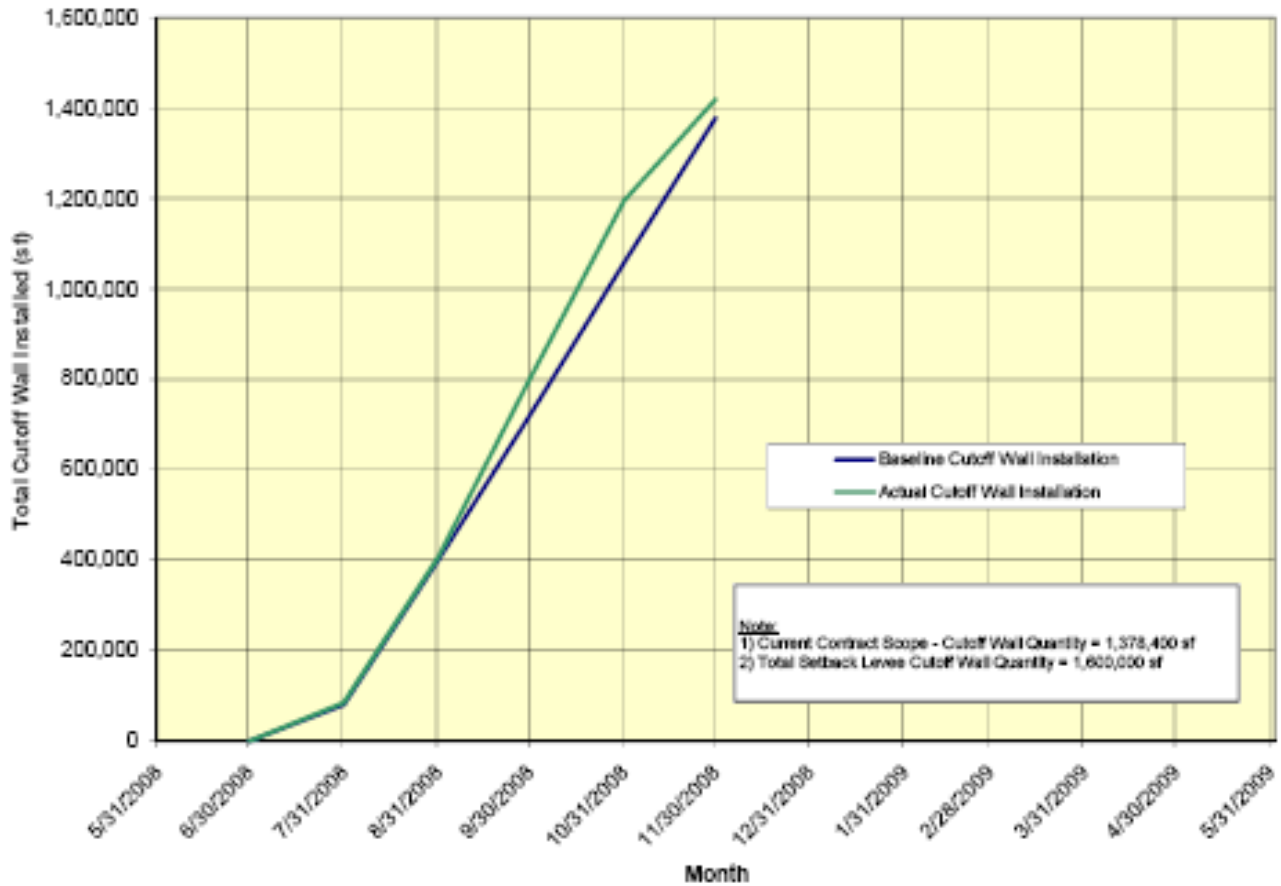
- Below is a TRLIA metric that tracks Modified Schedule B work progress based on funding. The metrics are adjusted as work is added to the contract

**Figure 1**  
**Feather River Setback Levee - Current Contractor Scope**  
**Contractor Invoiced Amount**



- Feature 3.1 Construction of Setback Levee Foundation: Completed.
  - Below is a TRLIA metric that tracks Modified Schedule B work progress based on cut-off wall installation.

**Figure 2**  
**Feather River Setback Levee - Current Contractor Scope**  
**Cutoff Wall Installation**



**Metric – Cutoff Wall**

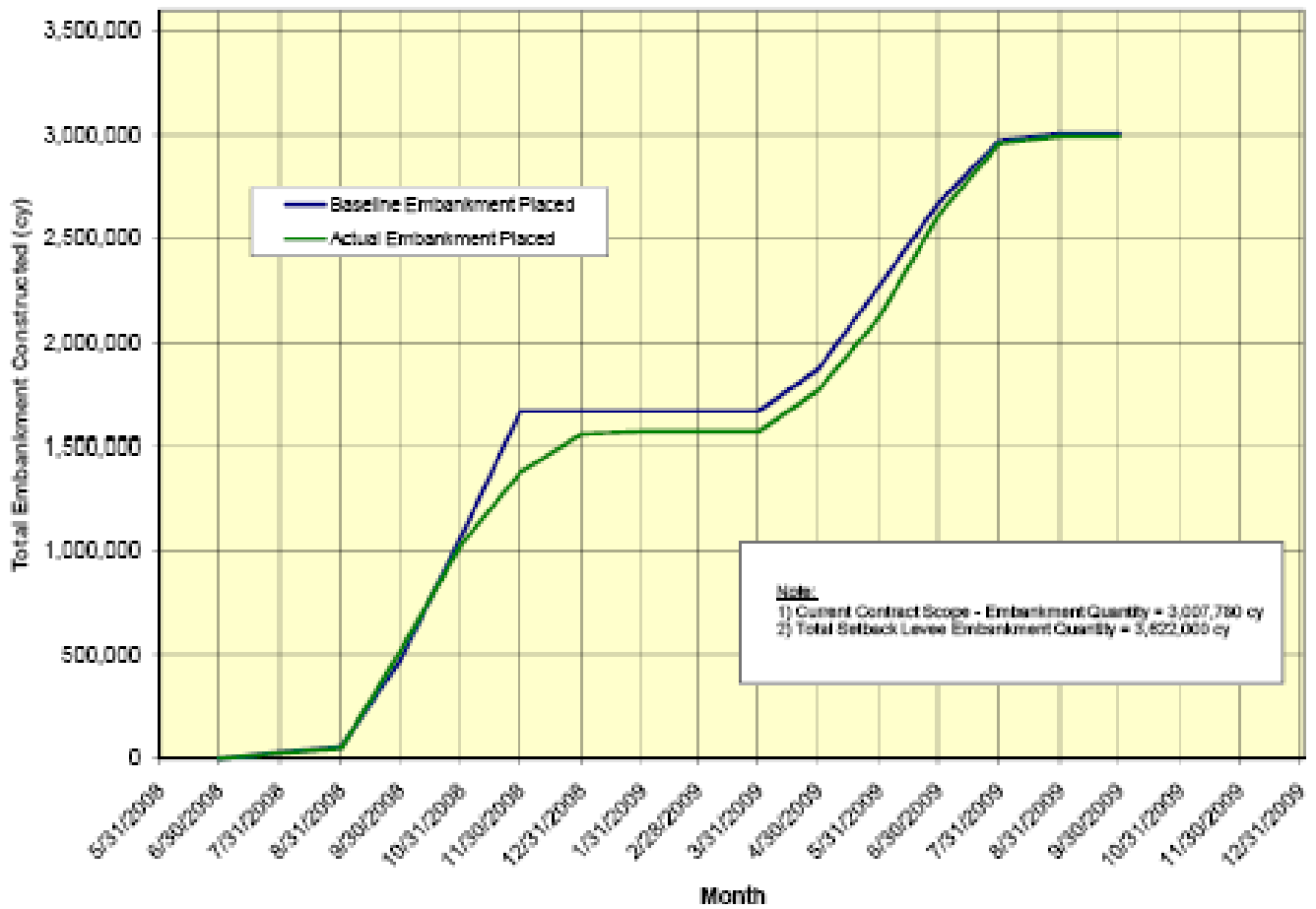
As shown on Figure 2, the actual installed cutoff wall is very close to the baseline projection (within 3% of projection). **This metric is complete**

- Feature 3.2 Construction of Setback Levee Embankment and related items:
  - Limited work was done during this Quarter due to the weather. It is anticipated construction work will begin again early in the 9<sup>th</sup> Quarter. The following construction items remain for Feature 3:

1. Pump Station 3
2. Relief wells
3. Miscellaneous fencing
4. Drainage ditch
5. Final site grading and clean-up

- Below is a TRLIA metric that tracks Modified Schedule B work progress based on embankment construction.

**Figure 3**  
**Feather River Setback Levee - Current Contractor Scope**  
**Embankment Construction**



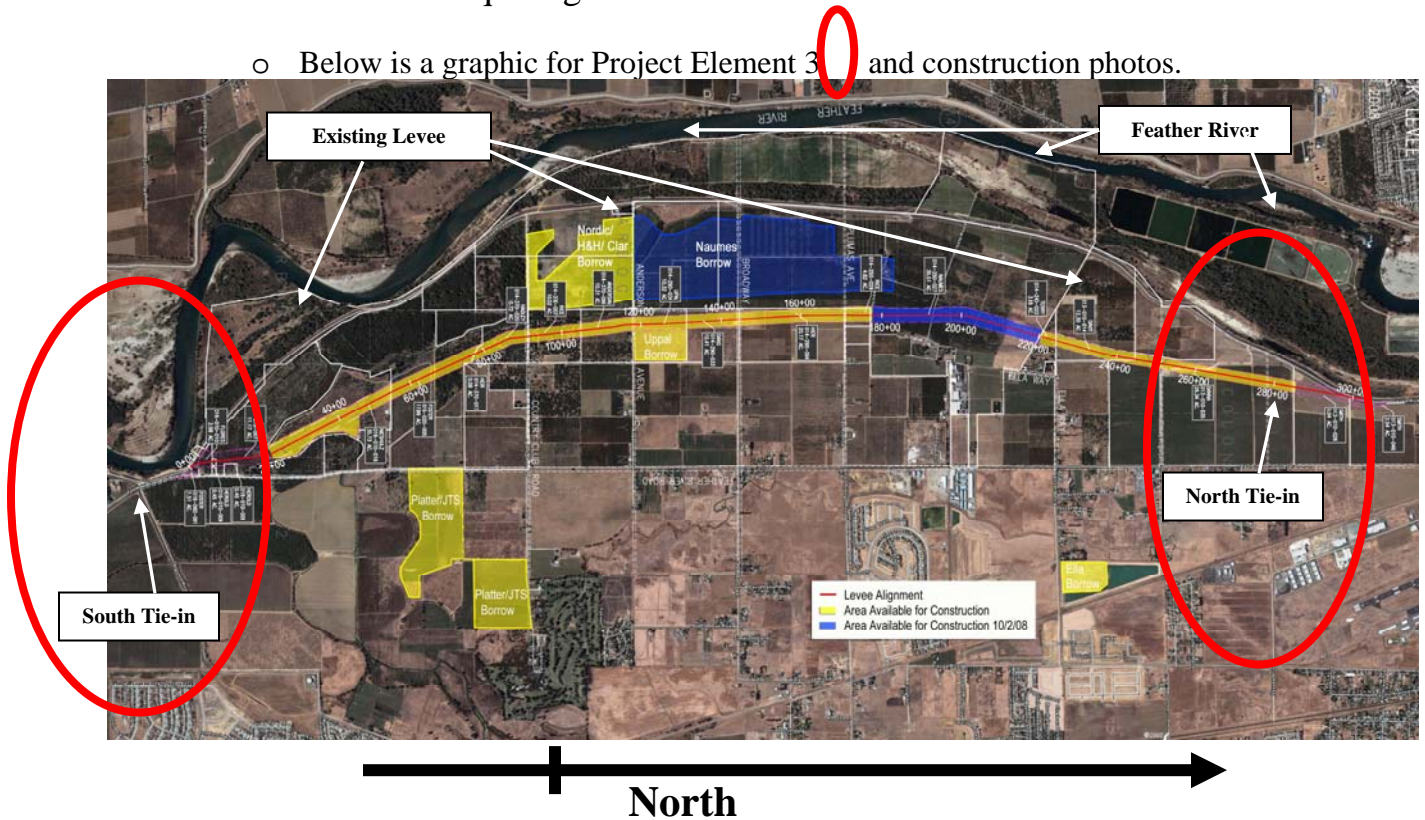
**Metric – Embankment**

As shown on Figure 3, the actual volume of embankment placed is very close to the baseline projection (within about 10,000 cy). **This metric is complete**

- Feature 3.3 Relocation of PG&E facilities: Completed in the 7<sup>th</sup> Quarter
- Feature 4 Environmental and Cultural Mitigation:
  - Feature 4.1 Environmental Mitigation/Restoration: Limited permit work was done this Quarter
  - Feature 4.2 Cultural Mitigation: No work was done this Quarter
- Feature 5 O&M Manual:
  - O&M manual addendum is anticipated to be finalized in the 10<sup>th</sup> Quarter.

➤ **Project Element 3: Feather River Segment 2 tie-ins and new levee construction requiring federal action**

- Below is a graphic for Project Element 3 and construction photos.



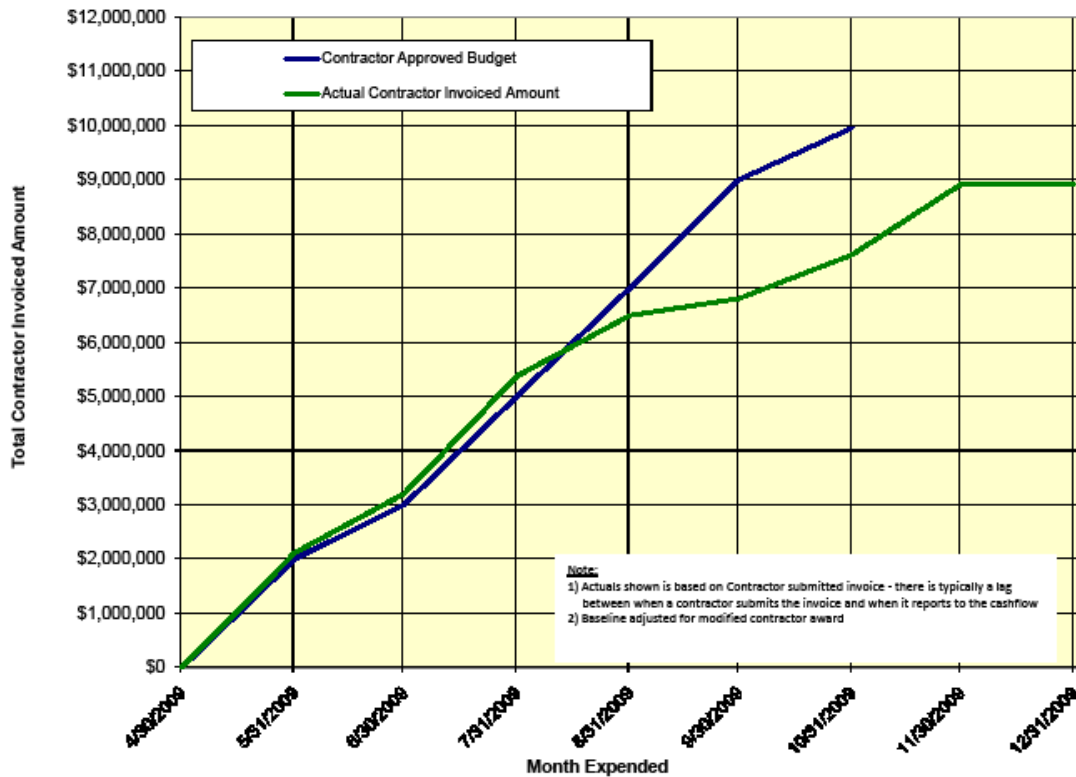
- Feature 1 - Construction (Embankment Feature 1.1 and Foundation Feature 1.2) are completed last Quarter. Table 2 below presents a completed summary of foundation and embankment quantities.

**Table 2: Project Element 3 Project Work Summary**

<b>Completion Quantities</b>			
Location	lineal feet of foundation	sf of cutoff wall	cubic yards embankment
Element 3	1,500	249,200	595,000

- Provided next are three TRLIA metrics that track Project Element 3 work progress. These metrics are adjusted as work is added to the contract.

**Figure 4  
Feather River Setback Levee - Current Contractor Scope  
Contractor Invoiced Amount**

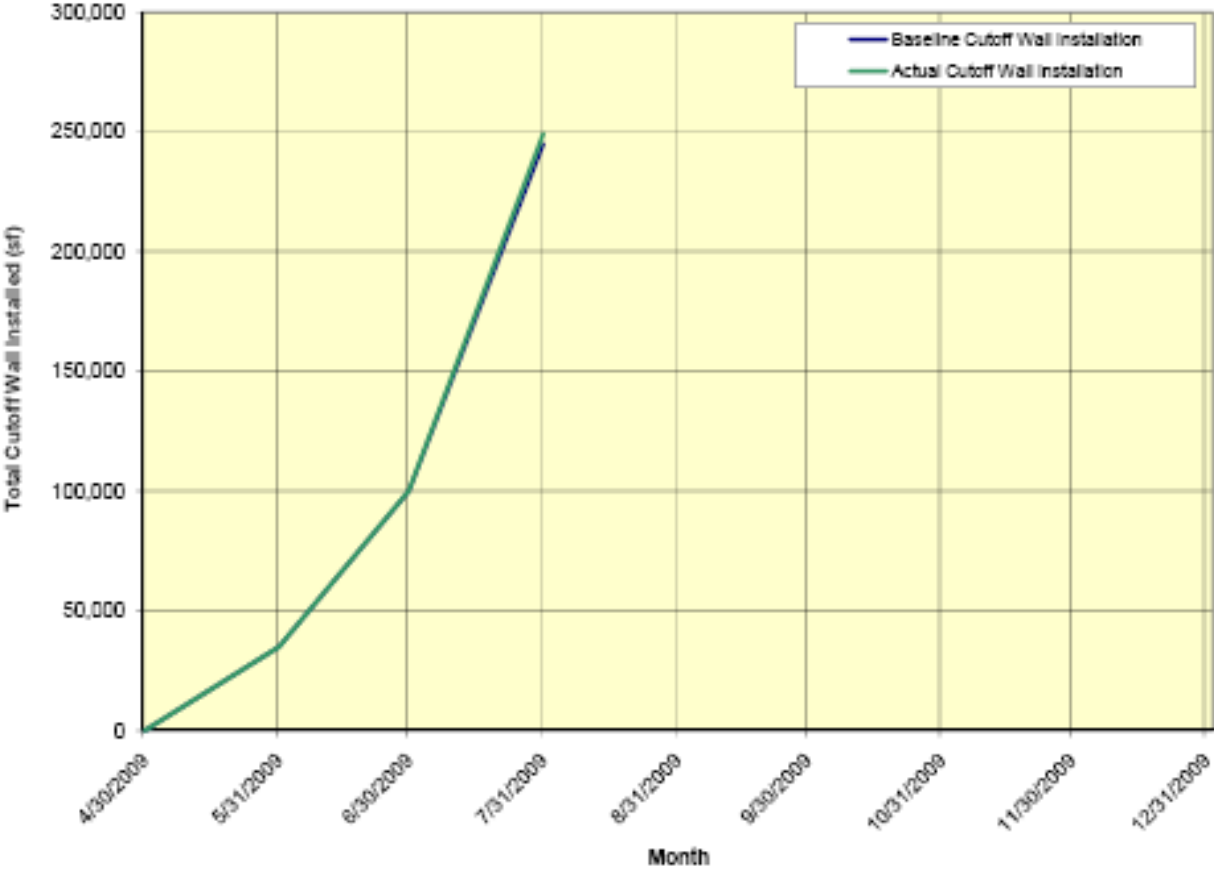


**Metric – Cost**

As shown on Figure 4, expenditures for Element began trailing from baseline projections primarily due to delays in receiving approval for the south tie-in

re-design at the cultural site, as well as weather impacts during fall 2009. Construction is expected to be completed spring 2010.

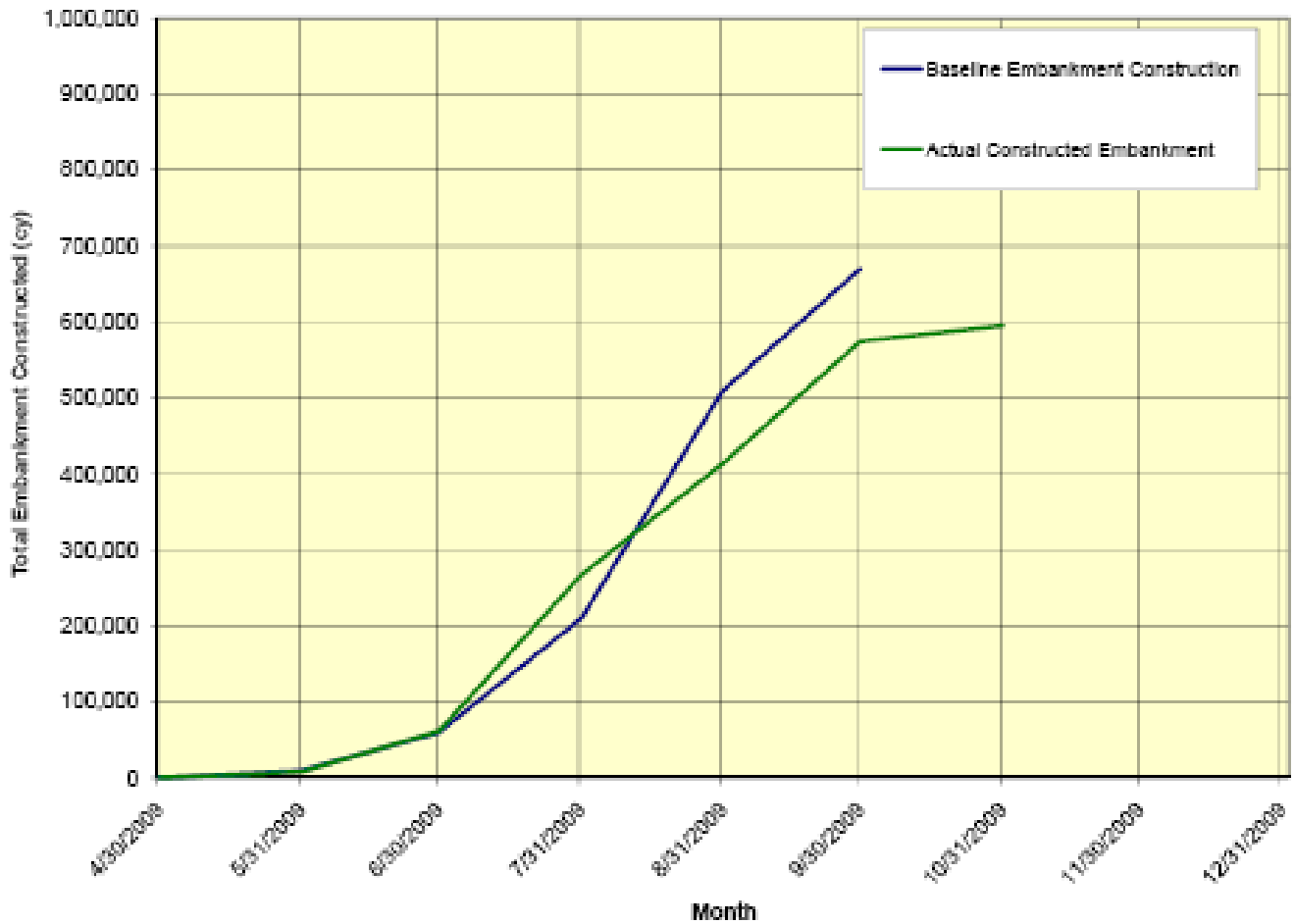
Figure 5  
Feather River Setback Levee - Current Contractor Scope  
Cutoff Wall Installation



**Metric – Cutoff Wall**

As shown on Figure 5, cutoff wall construction was completed in July 2009. **This metric is complete**

Figure 6  
 Feather River Setback Levee - Current Contractor Scope  
 Embankment Construction



**Metric – Embankment**

As shown on Figure 6, embankment construction production began trailing off from baseline projections primarily due to delays in receiving approval for the south tie-in re-design at the cultural site. Embankment construction is expected to be completed spring 2010. **This metric is complete**

➤ **Project Element 4: Feather River Segment 2 Existing Levee Degrade**

- Levee degradation is planned to begin again during this quarter. Amount of degrade that will be completed this quarter is dependent on spring weather conditions. Table 3 below summarized the amount of levee degrade that was accomplished in 2009 prior to winter earthwork shutdown, and an estimate of degrade that was accomplished this quarter.

**Table 3: Project Element 4 Work Schedule**

	<b>Work anticipated to be completed to Dec 2009</b>	<b>Work performed this quarter (Jan to Mar)</b>
Location	cubic yards embankment degraded	cubic yards embankment degraded
Existing Levee	2,100,000	0

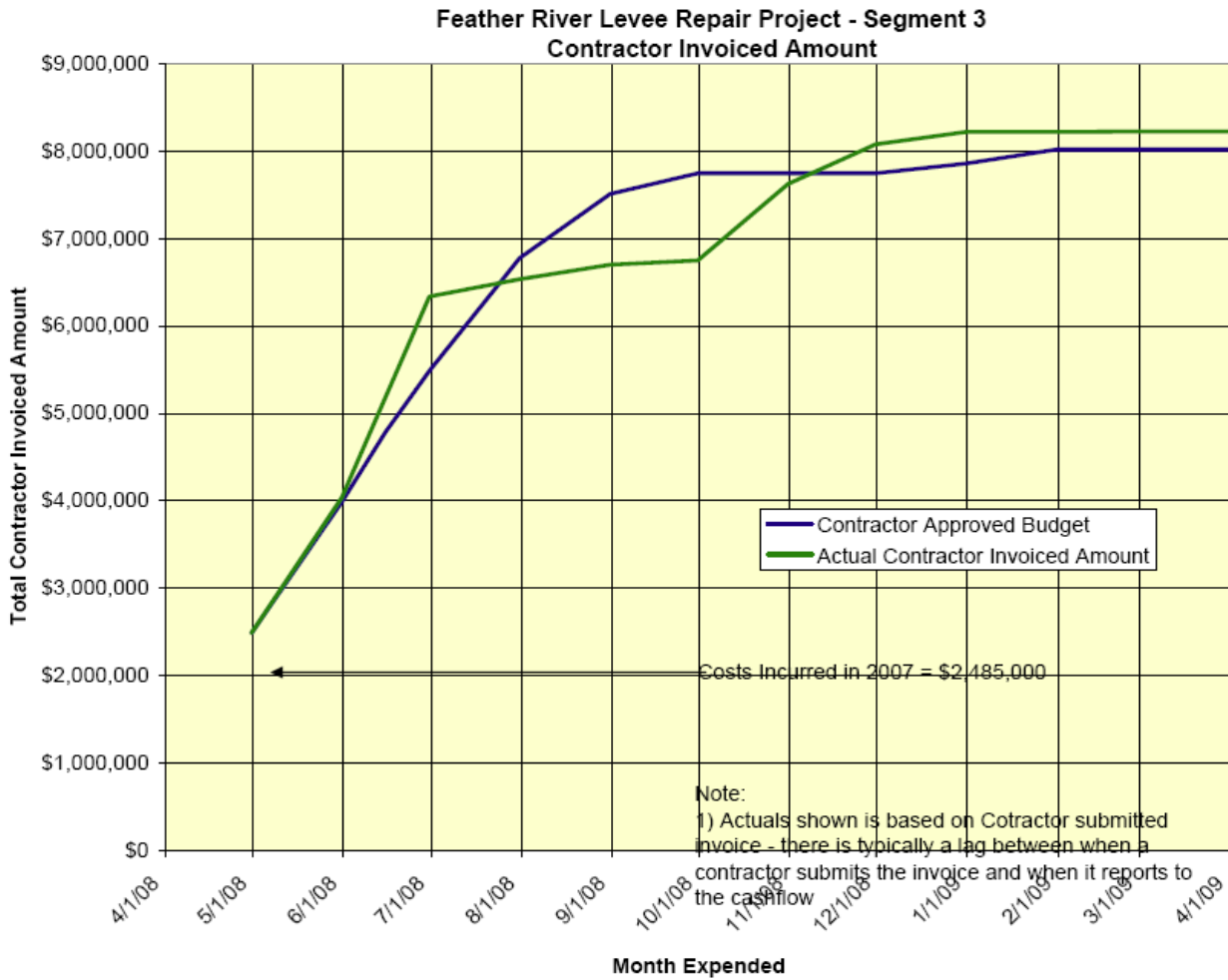
- The construction of the onsite wetland mitigation area is pending the completion of the levee degrade. Wetland mitigation construction is anticipated to occur summer 2010.

➤ **Element 5: Feather River Segment 3 levee improvement:**

- Feature 1.1 Design: This feature is completed.
- Feature 1.2 Permitting: Feature 1.2 Permitting: TRLIA Consultants prepared Levee System Certification documents during this Quarter for Project Elements 2, 3, 5, 5A, 9, and 9A for anticipated submission in May 2010.
- Feature 1.3 Right of Way Support: Both legal and real estate activity will continue during this quarter to support the ongoing land acquisition activities associated with Project Element 1 Feature 2. During the 9<sup>th</sup> Quarter TRLIA anticipates modifying the Segment 3 real estate plan to acquire a landside 10-ft-wide levee O&M toe access corridor. Acquisition of the O&M corridor will most likely occur through 2011.
- Feature 2 Construction Management: Completed. Close out documentation has been completed. TRLIA has submitted the documentation to close out this element. Below is the status of the Project Element Deliverables:
  - Design Report: submitted March 28, 2007

- Design Drawings and Specifications used for construction: submitted August 22, 2007
  - Permits: previously submitted – see permit table for list (Attachment 2)
  - CEQA and NEPA documents: previously submitted see permit table (Attachment 2)
  - As-built drawings: Submitted June 2009. Supplemental as-builts for the Segment 1 crack and Segment 3 erosion site repairs were submitted in December 2009.
- Feature 3 Construction: Construction Completed – no work was done this Quarter.
- TRLIA requested DWR to include erosion protection at the confluence of the Feather and Yuba Levees in Segment 3 work. This erosion protection was identified as necessary by the Corps of Engineers and required before this reach of levee could be certified. DWR has approved this work as part of the Feather River EIP Agreement. This work is being reported on as Project Element 5A.
  - Below are two TRLIA metrics that reflect major components of the Project Element 5 (Segment 3) work:

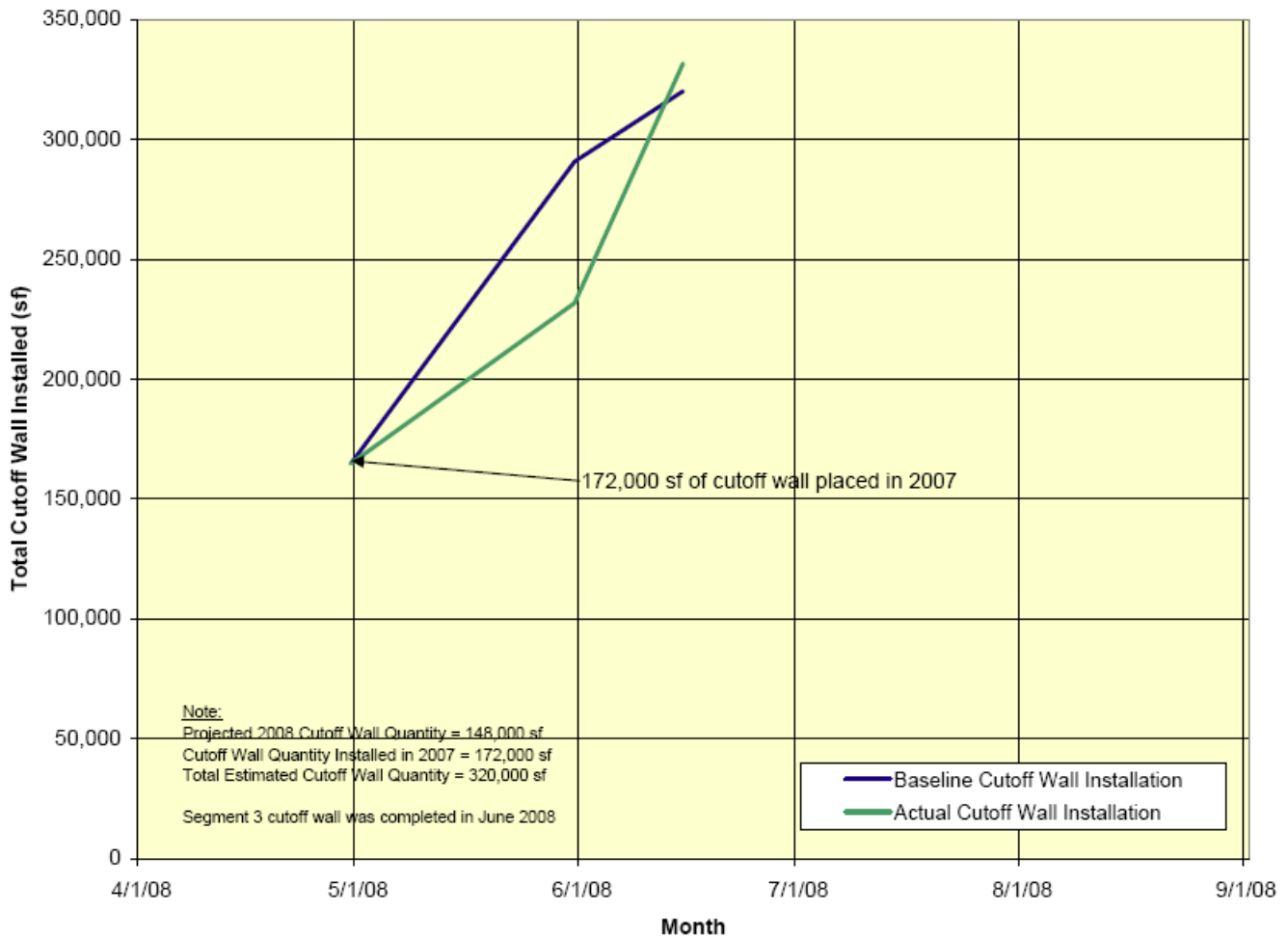
**Figure 7**



**Metric - Cost**

- As shown on Figure 7, the actual invoiced amount is slightly greater than the baseline projection, primarily due to a slightly increased cutoff wall length (see discussion with next Figure). **This metric is complete**

**Figure 8**  
**Feather River Levee Repair Project - Segment 3**  
**Cutoff Wall Installation**



**Metric – Cut off Wall**

- As shown on figure 8: Cutoff wall work was completed during the 2<sup>nd</sup> quarter. A 331,600 square foot (s.f.) soil cement bentonite (SCB) cutoff wall was installed compared to the bid quantity of 320,000 s.f. This increase is primarily due to: 1) overlap with the 2007 work; and 2) the increased cutoff wall depth in the 2008 work to address Corps concerns about SCB wall performance experienced on other projects.  
**This metric is complete**
- Feature 4: O&M manual addendum: Completed - Final O&M manual addendum was issued in December 2009.

➤ **Element 5A: Feather River Segment 3 Erosion Site 2:**

- Feature A1.1 Design: This feature is completed.
- Feature A1.2 Permitting: TRLIA Consultants prepared Levee System Certification documents during this Quarter for Project Elements 2, 3, 5, 5A, 9, and 9A for anticipated submission in May 2010.
- Feature A1.3 Right of Way Support: Both legal and real estate activity will continue during this quarter to support the ongoing land acquisition activities associated with Project Element 1 Feature 2. During the 9<sup>th</sup> Quarter TRLIA anticipates modifying the Segment 3 real estate plan to acquire a landside 10-ft-levee O&M toe access corridor. Acquisition of the O&M corridor will most likely occur through 2011.
- Feature A2 Construction Management: Completed. See Project Element 5 for Closeout documents.
- Feature A3 Construction: Completed – no work was done this Quarter. Construction began and was completed in the 7<sup>th</sup> Quarter.

**Table 4: Project Element 5A Work Summary**

<p><b>Completed Quantity</b> cubic yards rock</p>
<p>3,500</p>

- Feature A4 O&M Manual: Completed. Final O&M manual addendum was issued in December 2009, which included this Project Element (Erosion Site 2).

➤ **Project Element 6: Feather River Land Management:**

- Feature 1 Environmental Maintenance Activities: Limited activities performed this Quarter
- Feature 2 Lease Back Activities (e.g. farming): TRLIA has 5 farming leases and 2 pending farming leases in the Feather Setback area. They are listed below:
  - Foster (016-020-005, 014-370-030, 014-370-029, 016-010-002, 016-010-007)
  - Miller (014-370-033)
  - Maxey (014-370-024)

- Hadley (014-370-020)
- Davit (013-010-014)
- Nieschulz (Pending)
- Unassigned Orchards (Pending results from RFP). After an extensive RFP process, TRLIA is in the process of negotiating a lease for parcels 014-370-003, and 014-370-037. TRLIA has been working closely with DWR Real Estate to ensure the provisions of the lease meet DWR standards. TRLIA expects execution of the lease in the 9<sup>th</sup> Quarter or early in the 10<sup>th</sup> Quarter.

TRLIA received no lease payments this Quarter. The lease rate for the first year of construction was 0%. The leases then increase to 10% of the net profit for years 2 through 5. TRLIA should see additional revenues from year 2 of the leases in spring 2011. A schedule of payments is shown below:

- Foster - No monetary rent due for the first year. Second year's rent due on or before May 1, 2011.
  - Hadley - No monetary rent due for first year. Second year's rent due on or before September 1, 2011.
  - Maxey - No monetary rent due for first year. Second year's due on or before August 15, 2011.
  - Miller - No monetary rent due for first year. Second year's due on or before August 15, 2011.
  - Davit - First year's rent due on or before May 1, 2011
- Feature 3 Land Maintenance of Setback area (e.g. security) post construction and prior to transfer of property to State: TRLIA will continue to manage activities on the 1600 acres that were required for the Setback levee.
- TRLIA is implementing the interim land operations and maintenance plan for the Feather Setback area that was provided to DWR during the 8<sup>th</sup> Quarter and has adjusted the budget to reflect these changes for the 10<sup>th</sup> Quarter. The plan includes short-term and long-term operations and maintenance of the borrow sites, onsite mitigation areas, and project elements that include habitat value, such as the floodplain drainage swale and the wind wave reduction buffer waterside of the levee. **TRLIA anticipates constructing gravel roads within the setback area in order to perform maintenance and security activities. These gravel roads will be placed by the Project Element 4 (levee degrade) contractor.**
  - Due to the length of time that may be needed to transfer property to the state, TRLIA's land use responsibilities, which are part of

the Feather EIP work, may extend beyond the current agreement completion date (June 30, 2012). To cover this time gap, TRLIA has recommended that DWR and TRLIA jointly create an escrow account and then jointly place the needed funding based on the current agreement cost sharing ratios into this escrow to pay for the TRLIA land maintenance costs until the land is transferred to the State. Procedures can be established for both DWR and TRLIA to sign off on any expenditure from the escrow account. The establishment of the escrow account would allow DWR and TRLIA to manage the property post the agreement time period.

- During this Quarter TRLIA was invited to join the DWR Lower Feather River Floodway Corridor Management committee.

➤ **Project Element 7:** Project Management, legal support, community relations support, land management support, and overhead

- Activity occurred this quarter in all Features.

➤ **Element 8:** Feather River EIP Land Acquisition (formally Associated Project Element 1)

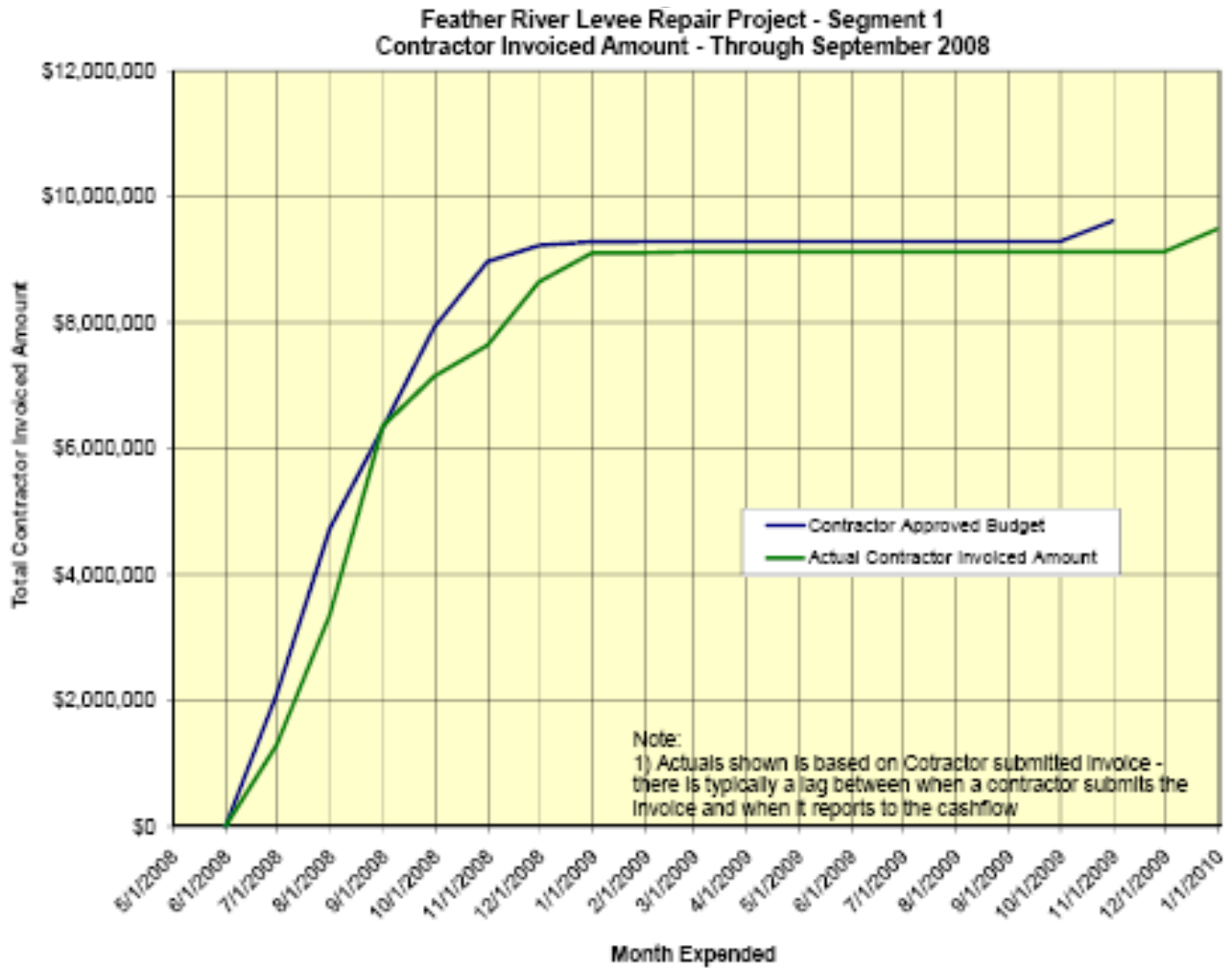
- Feature 1 Feather Segment 1: During the 9<sup>th</sup> Quarter TRLIA anticipates modifying the Segment 1 real estate plan to acquire a landside 50-ft wide-levee O&M toe access corridor. Acquisition of the O&M corridor will most likely commence during the 11<sup>th</sup> Quarter and occur through 2011. The overall budget was adjusted to reflect this change.

➤ **Element 9:** Feather River Segment 1 Levee Improvement (formally Associated Project Element 2)

- Feature 1.1 Design: Completed
- Feature 1.2 Permitting: TRLIA Consultants prepared Levee System Certification documents during this Quarter for Project Elements 2, 3, 5, 5A, 9, and 9A for anticipated submission in May 2010.
- Feature 1.3 Right of Way Support: Legal and real estate activity will continued during this quarter to support the ongoing land acquisition activities associated with Project Element 8 Feature 1. It is anticipated that during the 9<sup>th</sup> Quarter TRLIA will modify the Segment 1 real estate plan to acquire a landside 50-ft-wide levee O&M toe access corridor. Acquisition of the O&M corridor will most likely occur through 2011.

- Feature 2 Construction Management: Completed. Close out documentation has been completed. Below is the status of the Project Element Deliverables:
  - Design Report: submitted March 28, 2007
  - Design Drawings and Specifications used for construction: submitted August 22, 2007
  - Permits: previously submitted – see permit table for list
  - CEQA and NEPA documents: previously submitted see permit table (Attachment 2)
  - As-built drawings: Submitted June 2009. Supplemental as-builts for the Segment 1 crack and Segment 3 erosion site repairs were submitted in December 2009.
  
- Feature 3 Construction: Completed. Following are two TRILIA metrics that reflect major components of the Segment 1 work

Figure 9

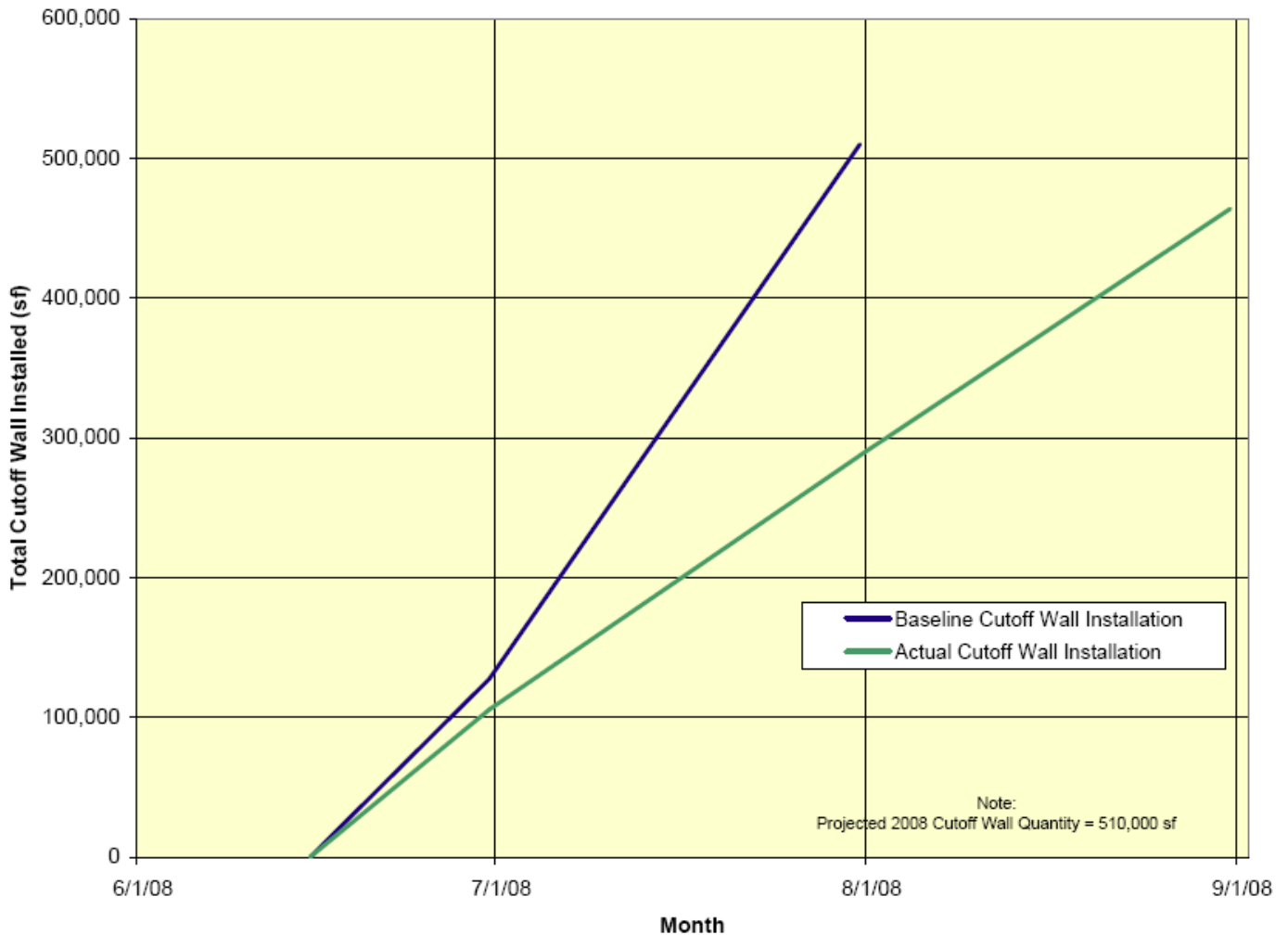


Metric - Cost

- The metric shows the project expensing has incorporated repairs to the Segment 1 crack. **This metric is complete**

**Figure 10**

**Feather River Levee Repair Project - Segment 1  
Cutoff Wall Installation**



**Metric**

- The soil-bentonite cutoff wall work was completed by September 1 at a reduced quantity. 176,035 s.f. of cutoff wall was installed, compared to the bid quantity of 220,000 s.f. (reduction of 43,965 s.f.). This reduction is due primarily to removal of the cutoff wall between Station 246 and 249 from the contract. Work on this section of cutoff wall will be included with project Element 3 in 2009. Also, the bid quantity included accounted for the possible need to go deeper in some areas to get an adequate key - during construction it was found that the depth shown on the drawings was adequate. **This metric was complete**

- Feature 4 O&M manual addendum: Completed. Final O&M manual addendum was issued in December 2009.

➤ **Element 9A: Feather River Segment 1 Crack Repair (Added to Work Plan)**

- Feature A1.1 Engineering and Construction Management: TRLIA Consultants may be responding to FEMA Levee System Certification comments during this Quarter. See Project Element 9 Feature 2 for closeout documentation.
- Feature A1.2 Right of Way Support: Both legal and real estate activity will continue during this quarter to support the ongoing land acquisition activities associated with Project Element 8 Feature 1. During the 9<sup>th</sup> Quarter TRLIA anticipates modifying the Segment 1 real estate plan to acquire a landside 50-ft-wide levee O&M toe access corridor. Acquisition of the O&M corridor will most likely occur through 2011.
- Feature A2 Construction: Completed
- Feature A3 O&M manual addendum: Completed. Final O&M manual addendum was issued in December 2009.

● **Environmental matters:**

➤ **Project Element 2:**

- The CVFPB encroachment permit application for the Elderberry Mitigation Area will be submitted once TRLIA, DWR, CVFPB, and F&WS have worked out a safe harbor agreement for elderberry maintenance in the Feather River floodway. DWR has established a Lower Feather River Corridor Management team that consists of local, state, and federal stakeholder to develop a Lower Feather River Corridor Management Plan. TRLIA is on this team. The DWR goal for the team is that over the next two (2) years the plan, which includes the safe harbor agreement concept, will be worked out. The two year timeframe for the plan to be completed does not meet TRLIA needs for Feather Setback Elderberry Area to be completed.
- Environmental work (Wetlands Mitigation & Swale and Vegetated Wave Buffer) is anticipated to be completed in the next Quarter. TRLIA has selected River Partners to do the mitigation work and anticipates a contract being awarded in the April/May timeframe.

- **Status of permits, easements, rights-of-way, and approvals as may be required by other State, federal, and/or local agencies:**
  - **Project Elements 2, 3, 4, 5, 5A, 9, & 9A:**
    - See Attachment 2 for the Permit status update.
  - **Project Element 3 & 4:**
    - The Corps signed the Feather River Setback Levee Environmental Impact Statement 404 permit Record of Decision on December 8, 2008, and issued the final Feather River Setback 404 permit on December 15, 2008.
      - Incorporated into the 404 permit is the approval of the on-site Wetlands Mitigation Plan.
      - The construction of the onsite Wetland mitigation area is pending the completion of the levee degrade (Project Element 4). Wetland mitigation construction is anticipated to occur summer 2010.
      - A permit condition is that prior to construction, TRLIA needs to provide a construction and performance bond or escrow for the on-site Wetlands project. This was completed in April 2009.
      - A permit condition is that prior to construction, TRLIA needs to provide a fully funded endowment for the on-site Wetlands project. This was completed in April 2009.
    - The CVFPB approved permit No. 18430 which allows levee degradation at the July 2009 Meeting. TRLIA is to submit separate encroachment permit applications to the CVFPB for the Vegetated Wave Buffer and for the Elderberry Mitigation Area.
    - TRLIA submitted an encroachment permit application to the CVFPB for the Vegetated Wave Buffer on September 3, 2009.
    - The encroachment permit application for the Elderberry Mitigation Area will be submitted once TRLIA, DWR, CVFPB, and F&WS have worked out a safe harbor agreement for elderberry maintenance in the Feather River floodway.

- **Issues/concerns that have, will, or could affect the schedule or budget, with a recommendation on how to correct the matter:**

- Issue 1: Timely State funding advances particularly across fiscal years due to continued state budget problems is concern. Delays in state funding forces local funds to be used to pay the State share of expenses. This places a hardship on the local community and also could force construction delays due to the local funds not being sufficient to cover the State share.

Recommended Resolution: DWR needs to advance or set aside enough funds to cover the state share of construction expenditures through the construction season prior to June 30<sup>th</sup> in order for local agencies to have the assurance that funding is available to incur large construction debt.

- Issue 2: Due to the length of time that may be needed to transfer property to the state, TRLIA's land use responsibilities, which are part of the Feather EIP work, may extend beyond the current agreement completion date (June 30, 2012). To cover this time gap, TRLIA has recommended that DWR and TRLIA jointly create an escrow account and then jointly place the needed funding based on the current agreement cost sharing ratios into this escrow to pay for the TRLIA land maintenance costs until the land is transferred to the State. Procedures can be established for both DWR and TRLIA to sign off on any expenditure from the escrow account. The establishment of the escrow account would allow DWR and TRLIA to manage the property past the agreement time period.

Recommended Resolution: DWR agree to the establishment of the escrow account.

- Issue 3: The CVFPB encroachment permit application for the Elderberry Mitigation Area will be submitted once TRLIA, DWR, CVFPB, and F&WS have worked out a safe harbor agreement for elderberry maintenance in the Feather River floodway. DWR has established a Lower Feather River Corridor Management team that consists of local, state, and federal stakeholder to develop a Lower Feather River Corridor Management Plan. TRLIA is on this team. The DWR goal for the team is that over the next two (2) years the plan, which includes the safe harbor agreement concept, will be worked out. The two year timeframe for the plan to be completed does not meet TRLIA needs for Feather Setback Elderberry Area to be completed.

Recommended Resolution: DWR work with TRLIA to develop a plan that will allow the CVFPB approval of an encroachment permit for the Feather River Setback Area Elderberry Mitigation Area prior to the completion of the Lower Feather River Corridor Management Plan.

- **Describe differences between the work to be performed and the work outlined in the Overall Work Plan, including anticipated change orders**
  - **Project Element 2 & 3:** Due to weather impacts, the contractor was not able to complete all ancillary setback levee activities in 2009. Work remaining includes completion of pump station punch list and testing, relief wells, miscellaneous gates, and final grading and clean-up. TRLIA is working with the contractor to perform a final materials quantity review, which will result in a change order to reconcile the actual quantities. Anticipate this change order to be issued in the spring/summer 2010.
  - **Project Element 4:** Due to weather delays, the contractor was not able to complete degradation of the old levee and setback area final grading. This work will commence again in spring 2010 when weather conditions allow.
  
- **Demonstrate financial ability to pay local cost share of Eligible Project Costs required to complete the Project:**
  - All local funding agreements have been executed. Local funding was provided in a timely manner during the Quarter to support all applicable Project Elements.
  - On July 22, 2008, YCWA and Yuba County formed the Yuba Levee Finance Authority (YLFA) as the entity to effectuate the borrowing contemplated in the local funding agreement. On September 23, 2008, the YLFA closed on bonds sales to yield \$46.6 million in proceeds. To date, the YLFA Board has authorized for draw by TRLIA \$41,656,000 of the \$46,600,000 in local funding for the project. As of the end of March 31, 2010, TRLIA had drawn down \$39,619,337.
  
- **Legal Matters:** No issues for all Project Elements
  
- **Cost Information by Project Element:** This information is provided in Appendix I at end of this Quarterly Progress Report.
  - Appendix I includes two sets of tables that present the following analyses:
    1. **Quarterly Work Plan Reconciliation** - A reconciliation of the Eighth Quarterly Work Plan forecasted expenditures to the actual expenses incurred for the quarter's work and, the associated funding of the State Share received pursuant to Section 14.C of TRLIA funding agreement with DRW (Funding Agreement).

**2. Cost and Funding Status through the Seventh Quarter** - A summary of the cumulative costs incurred since November 6, 2006 through March 31, 2010 which are inclusive of the expenses incurred through March 31, 2010 and paid by TRLIA through the month of April 2010. Reference the May 21, 2010 TRLIA Final Statement of Costs for the 8th Quarter (preliminary not approved by DWR).

There is also a comparison of those costs incurred to the current Overall Work Plan Budget (based on the revisions by TRLIA submitted on April 26, 2010) included as Exhibit A to the Funding Agreement. *On April 26, 2010 TRLIA submitted a Revised Exhibit A as part of the 10<sup>th</sup> Quarterly Work Plan that adjusted the Overall Work Plan Budget based upon the modified funding agreement.*



- **A discussion on how the projected schedule compares to the original or last reported schedule:**
  - Project Element 1 Feature 2 Feather Segment 3: Additional time was added to acquire 10-ft-wide levee access corridor
  - Project Element 2 Feature 1.2 Permitting: Additional time was added for FEMA levee certification
  - Project Element 2 Feature 3.2 Embankment Construction: Additional time was added to cover miscellaneous construction items. Levee construction is completed.
  - Project Element 4 Environmental and Cultural Mitigation: Additional time was added.
  - Project Element 5 Feature 1.2 Permitting: Additional time was added for FEMA levee certification
  - Project Element 5 Feature 1.3 Segment 3 Right of Way Support: Additional time was added to acquire 10-ft-wide levee access corridor
  - Project Element 5A Feature 1.2 Permitting: Additional time was added for FEMA levee certification
  - Project Element 5A Feature 1.3 Segment 2 Right of Way Support: Additional time was added to acquire 10-ft-wide levee access corridor
  - Project Element 8: Additional time was added to acquire 50-ft-wide levee access corridor
  - Project Element 9 Feature 1.2 Permitting: Additional time was added for FEMA levee certification
  - Project Element 9 Feature 1.3 Segment 1 Right of Way Support: Additional time was added to acquire 50-ft-wide levee access corridor
  - Project Element 9A Feature 1.1 Engineering and Construction Management: Additional time was added for FEMA levee certification
  - Project Element 9 Feature 1.2 Segment 2 Right of Way Support: Additional time was added to acquire 50-ft-wide levee access corridor

**6. Cost Information by Associated Project Element:** This information is provided in Appendix I at end of the Quarterly Progress Report

## **Attachments**

1. Media Items: January 27, 2010 Media/Press Release: South Yuba Levee Project Named Best of 2009 By Civil Engineers
2. Permit Status Update for Project Element 2, 3, 4, 5, 5A, 9, & 9A

## **Appendices**

Appendix I: TRLIA Feather River Levee Improvement Project Eighth Quarterly Progress Report Budget Information; May 21, 2010

## Attachment 1- Media Items

- o January 27, 2010 Media/Press Release: South Yuba Levee Project Named Best of 2009 By Civil Engineers



### THREE RIVERS LEVEE IMPROVEMENT AUTHORITY

1114 Yuba Street, Suite 218

Marysville, CA 95901

Office (530) 749-7841 Fax (530) 749-6990

**FOR IMMEDIATE RELEASE**

January 27, 2010

**CONTACT:** Paul Brunner

(530) 749-5679

#### SOUTH YUBA LEVEE PROJECT NAMED BEST OF 2009 BY CIVIL ENGINEERS

MARYSVILLE, CA – For the second year in a row, the best flood project in the Sacramento region can be found in South Yuba County. The Sacramento Section of the American Society of Civil Engineers (ASCE) announced late last week that it will award its “2009 Outstanding Engineering Award” for Flood Control to the Three Rivers Levee Improvement Authority for its Feather River Setback Levee. The award will be presented at ASCE’s annual dinner in Sacramento on February 17. Last year, the Authority’s Bear River Setback Levee was named ASCE’s Flood Control Project of the Year for the state of California.

The Feather River Setback Levee – the biggest in the state at six miles in length -- was developed and implemented to provide 200-year flood protection to more than 40,000 residents in South Yuba County. The project opened approximately 1,600 acres of additional land for expanded floodway and ecological habitat. Regionally, the project is expected to lower water elevations by more than a foot during significant flood events, easing pressure on both the Yuba and Feather River Levees and providing increased flood protection to South Yuba County, as well as the cities of Marysville and Yuba. Construction of the levee improvements took place between June 2008 and November 2009, and the new levee and expanded floodway are now fully operational.

“We’ve always said that we have the best professionals in the business working on this project,” said Yuba County Supervisor Mary Jane Griego, chair of the TRLLA Board. “As a result, we also have the strongest flood protection in Northern California. We appreciate acknowledgement for a job well done.”

The Feather River Setback Levee is part of the Authority’s \$405 million levee program to improve 29 miles of levees to 200-year flood protection. Improvements to the Upper Yuba River Levee, the final phase of the project, will begin this year. When completed, Yuba County will be the first urban area in the Central Valley to offer a 200-year level of flood protection.

###

*The Three Rivers Levee Improvement Authority, a joint powers agency, was established in May 2004 by the county of Yuba and Reclamation District 784 to finance and construct levee improvements in South Yuba County. Four work phases were identified with the goal of achieving 200-year flood protection for more than 40,000 residents and nearly \$1 billion in property and structures. [www.trlia.org](http://www.trlia.org)*

**Attachment 2 – Updated Permit Tables for Project Elements 2, 3, 4, 5,  
5A, 9, &9A**

<b><u>Project Element 2</u> Applicable Permit and Environmental Documentation (refer to exhibit A of overall TRLIA work plan)</b>			
<b>PERMITTING AGENCY</b>	<b>PERMIT</b>	<b>ACTION DONE</b>	<b>STATUS/COMMENTS</b>
The Central Valley Flood Protection Board	Encroachment Permits	Yes	The CVFPB General Manager issued a phased permit (#18227) on April 7, 2008 that allows construction in non-federal jurisdictional areas
California Central Valley Flood Protection Board	Encroachment Permit – Vegetated Wave Buffer	No	Application submitted in September 2009; pending maintenance agreement with RD 784
California Central Valley Flood Protection Board	Encroachment Permit – Elderberry Mitigation Area	No	Application pending preparation of safe harbor agreement for elderberry maintenance in the Feather River floodway.
U.S. Fish and Wildlife Service	Endangered Species Act Compliance	Yes	Biological Opinion was approved on August 28, 2008
Native American Heritage Commission (NAHC)	Evaluation of effects on Native American burials or artifacts	Yes	Coordination with the NAHC was completed and MOA signed by all parties, on August 13, 2008
RWQCB, Region 5	National Pollution Discharge Elimination System (NPDES) Permit per Section 402 of the Clean Water Act	Yes	A NPDES permit (WDID # 5S5BC348901) was issued on 9/18/07 for Segments 1, 2, and 3.
Feather River Air Quality Management District (FRAQMD)	Authority to Construct	Yes	Contractor submitted Fugitive Dust Plan to FRAQMD
DFG	Streambed Alteration Agreement	Yes	The final Streambed Alteration Agreement was approved by DFG on January 2, 2008
Reclamation District 784 (RD 784)	Encroachment Permit	Yes	RD 784 is one of the project sponsors and coordination with RD 784 regarding levee encroachments is ongoing. RD 784 signed the

			application for the Central Valley Flood Protection Board encroachment permit with no objections.
Yuba County	Grading Permit	Yes	Grading permit was received in May 2008
State Mining and Geology Board (SMGB)	Reclamation Plan	Yes	The Reclamation Plan was approved and SMGB mining permit (No. 91-58-0026) issued for Ella and Platter/JTS Borrow sites on Sept 22, 2009.
CEQA	EIR	Yes	EIR certified by the TRLIA board on February 6, 2007 and a Notice of Determination filed with the State Clearinghouse (Number 2006062071) on February 8, 2007
CEQA	EIR Addendum #1	Yes	EIR addendum for offsite Platter Borrow site
CEQA	EIR Addendum #2	Yes	EIR addendum for Ella offsite borrow site
Section 104 Credit Application	Future federal projects cost Sharing	Yes	CVFPB submitted a request on June 15, 2007 for \$154.3M Section 104 credit to the Sacramento District.
Section 104 Credit Approval (N/A)	Future federal projects cost sharing	Yes	At the March 21 CVFPB meeting DWR stated it would waive the need for 104 credits – DWR waiver letter issued on May 2, 2008

<b>Project Element 3 Applicable Permit and Environmental Documentation (refer to exhibit A of overall TRLIA work plan)</b>			
<b>PERMITTING AGENCY</b>	<b>PERMIT</b>	<b>Action Done</b>	<b>STATUS/COMMENTS</b>
The Central Valley Flood Protection Board	Encroachment Permits	Yes	The CVFPB General Manager issued a phased permit (#18227) on April 7, 2008. The permit has two parts: Part A – Project Element 2 work to be done outside of jurisdictional waters of the U.S., and Part B – Project Element 3 work to be within jurisdictional waters of the U.S.
U.S. Army Corps of Engineers (Corps)	Section 10 Permit	Yes	Navigable waterways not affected
Corps	Section 404 Permit	Yes	Corps of Engineers signed the Feather River Setback Levee Environmental Impact Statement 404 permit Record of Decision on December 8, 2008 and

			the issued the final Feather River Setback 404 permit on December 15, 2008.
Corps	408 approval of project levee alteration	Yes	Corps of Engineers signed the Feather River Setback Levee Environmental Impact Statement 408 Authorization Record of Decision on December 8, 2008 and issued The Feather River Setback 408 Authorization on December 8, 2008.
Corps	Wetlands Delineation	Yes	Completed March 11, 2008
Corps	Wetlands Delineation	Yes	Amended September 30, 2008
Regional Water Quality Control Board (RWQCB); Central Valley Region (Region 5)	Section 401 Water Quality Certification	Yes	The Regional Water Quality Control Board signed the Section 401 Water Quality permit on November 24, 2008. Copy available on the
RWQCB, Region 5	National Pollution Discharge Elimination System (NPDES) Permit per Section 402 of the Clean Water Act	Yes	A NPDES permit (WDID # 5S5BC348901) was issued on 9/18/07 for Segments 1, 2, and 3.
Feather River Air Quality Management District (FRAQMD)	Authority to Construct	Yes	Contractor submitted a Fugitive Dust Plan to the FRAQMD prior to initiating construction on Segment 2.
U.S. Fish and Wildlife Service	Endangered Species Act Compliance	Yes	Biological Opinion was approved on August 28, 2008
National Marine Fisheries Service (NMFS)	Endangered Species Act Compliance	Yes	NMFS sent letter on December 13, 2007 concurring that setback levee is not likely to adversely affect any fish species under NMFS jurisdiction.
California Department of Fish and Game (DFG)	California Endangered Species Act Compliance	Yes	Section 2081 Permit received in August 2009
DFG	Streambed Alteration Agreement	Yes	The final Streambed Alteration Agreement was approved by DFG on January 2, 2008.
California State Lands Commission (SLC)	Encroachment Permit	Yes	All project facilities are outside SLC jurisdiction.
California Department of Forestry	Conversion of timberland to other uses.	Yes	No timberland conversion is required for the project.
The Resources Agency	Cancellation of Williamson Act Contract	Yes	No Williamson Act contract cancellations are required to implement the project.

California Department of Transportation (Caltrans)	Encroachment on or across a State highway	Yes	Project facilities do not encroach onto a State highway. However, construction equipment will likely use State Route 70 (SR 70). Development and implementation of a traffic control plan is being coordinated with Caltrans.
Native American Heritage Commission (NAHC)	Evaluation of effects on Native American burials or artifacts	Yes	Coordination with the NAHC was completed and MOA signed by all parties, on August 13, 2008.
State Office of Historic Preservation (SHPO)	Evaluation of effects on historic and cultural resources	Yes	Coordination with the SHPO was completed and MOA signed by all parties, on August 13, 2008.
Reclamation District 784 (RD 784)	Encroachment Permit	Yes	RD 784 is one of the project sponsors and coordination with RD 784 regarding levee encroachments is ongoing. RD 784 signed the application for the Reclamation Board encroachment permit with no objections.
Yuba County	Grading Permit	Yes	Grading permit was received in May 2008
State Mining and Geology Board (SMGB)	Reclamation Plan	Yes	The Reclamation Plan was approved and SMGB mining permit (No. 91-58-0026) issued for Ella and Platter/JTS Borrow sites on Sept 22, 2009.
CEQA	EIR	Yes	EIR certified by the TRLIA board on February 6, 2007 and a Notice of Determination filed with the State Clearinghouse (Number 2006062071) on February 8, 2007.
NEPA	EIS	Yes	Corps of Engineers Finalized the Environmental Impact Statement and signed the Record of Decision on December 8, 2008.
Section 104 Credit	Future federal projects cost Sharing	Yes	The Section 104 credit for this Project Element was issued by the Corps on April 3, 2009

**Project Element 4 Applicable Permit and Environmental Documentation (refer to exhibit A of overall TRLIA work plan)**

<b>PERMITTING AGENCY</b>	<b>PERMIT</b>	<b>Action Done</b>	<b>STATUS/COMMENTS</b>
California Central Valley Flood Protection Board	Encroachment Permit	Yes	CVFPB issued permit No 18430 at the July 2009 Board meeting
U.S. Army Corps of Engineers (Corps)	Section 10 Permit	Yes	Navigable waterways not affected
Corps	Section 404 Permit	Yes	Corps of Engineers signed the Feather River Setback Levee Environmental Impact Statement 404 permit Record of Decision on December 8, 2008 and the issued the final Feather River Setback 404 permit on December 15, 2008.
Corps	408 approval of project levee alteration	Yes	Corps of Engineers signed the Feather River Setback Levee Environmental Impact Statement 408 Authorization Record of Decision on December 8, 2008 and issued The Feather River Setback 408 Authorization on December 8, 2008.
Corps	Wetlands Delineation	Yes	Completed March 11, 2008
Corps	Wetlands Delineation	Yes	Amended September 30, 2008
Regional Water Quality Control Board (RWQCB); Central Valley Region (Region 5)	Section 401 Water Quality Certification	Yes	The Regional Water Quality Control Board signed the Section 401 Water Quality permit on November 24, 2008.
RWQCB, Region 5	National Pollution Discharge Elimination System (NPDES) Permit per Section 402 of the Clean Water Act	Yes	A NPDES permit (WDID # 5S5BC348901) was issued on 9/18/07 for Segments 1, 2, and 3.
Feather River Air Quality Management District (FRAQMD)	Authority to Construct	Yes	Contractor submitted a Fugitive Dust Plan to the FRAQMD prior to initiating construction on Segment 2.
U.S. Fish and Wildlife Service	Endangered Species Act Compliance	Yes	Biological Opinion was approved on August 28, 2008
National Marine Fisheries Service (NMFS)	Endangered Species Act Compliance	Yes	NMFS sent letter on December 13, 2007 concurring that setback levee is not likely to adversely affect any fish species under NMFS jurisdiction.
California Department of Fish and Game (DFG)	California Endangered Species Act Compliance	Yes	Section 2081 Permit received in August 2009
DFG	Streambed Alteration	Yes	The final Streambed Alteration

	Agreement		Agreement was approved by DFG on January 2, 2008.
California State Lands Commission (SLC)	Encroachment Permit	Yes	All project facilities are outside SLC jurisdiction.
California Department of Forestry	Conversion of timberland to other uses.	Yes	No timberland conversion is required for the project.
The Resources Agency	Cancellation of Williamson Act Contract	Yes	No Williamson Act contract cancellations are required to implement the project.
California Department of Transportation (Caltrans)	Encroachment on or across a State highway	Yes	Project facilities do not encroach onto a State highway. However, construction equipment will likely use State Route 70 (SR 70). Development and implementation of a traffic control plan is being coordinated with Caltrans.
Native American Heritage Commission (NAHC)	Evaluation of effects on Native American burials or artifacts	Yes	Coordination with the NAHC was completed and MOA signed by all parties, on August 13, 2008.
State Office of Historic Preservation (SHPO)	Evaluation of effects on historic and cultural resources	Yes	Coordination with the SHPO was completed and MOA signed by all parties, on August 13, 2008.
Reclamation District 784 (RD 784)	Encroachment Permit	Yes	RD 784 is one of the project sponsors and coordination with RD 784 regarding levee encroachments is ongoing. RD 784 signed the application for the Reclamation Board encroachment permit with no objections.
Yuba County	Grading Permit	Yes	Grading permit was received in May 2008
State Mining and Geology Board (SMGB)	Reclamation Plan	Yes	The Reclamation Plan was approved and SMGB mining permit (No. 91-58-0026) issued for Ella and Platter/JTS Borrow sites on Sept 22, 2009.
CEQA	EIR	Yes	EIR certified by the TRLIA board on February 6, 2007 and a Notice of Determination filed with the State Clearinghouse (Number 2006062071) on February 8, 2007.
NEPA	EIS	Yes	Corps of Engineers Finalized the Feather River Setback Levee Environmental Impact Statement and

			signed the Record of Decision on December 8, 2008.
Section 104 Credit	Future federal projects cost Sharing	Yes	The Section 104 credit for this Project Element was issued by the Corps on April 3, 2009

<b>Project Element 5 Applicable Permit and Environmental Documentation (refer to exhibit A of overall TRLIA work plan)</b>			
<b>PERMITTING AGENCY</b>	<b>PERMIT</b>	<b>ACTION DONE</b>	<b>STATUS/COMMENT</b>
Central Valley Flood Protection Board (CVFPB)	Encroachment Permit	Yes	Permit No. 18170 BD issued on August 7, 2007.
Central Valley Flood Protection Board (CVFPB)	Encroachment Permit	Yes	Permit No. 18170 BD permit modified for seepage berm to provide final fix for cutoff wall trench cave-in, issued on 7/17/08
U.S. Army Corps of Engineers (Corps)	Section 10 Permit	Yes	Navigable waterways not affected
Corps	Section 404 Permit	Yes	No jurisdictional features affected. Corps issued "Letter of No Permit Required" on July 23, 2007
Corps	408 Approval of project levee alteration	Yes	Finding of No Significant Impact (FONSI) issued by Corps of Engineers on July 11, 2007. Corps approved Section 408 alteration on August 2, 2007.
Regional Water Quality Control Board (RWQCB); Central Valley Region (Region 5)	Section 401 Water Quality Certification	Yes	No 404 permit triggering 401 compliance. RWQCB sent email on August 15, 2007 verifying that 401 certification was not necessary
RWQCB, Region 5	National Pollution Discharge Elimination System (NPDES) Permit per Section 402 of the Clean Water Act	Yes	A NPDES permit (WDID # 5S5BC348901) was issued on 9/18/07. A Storm water Pollution Prevention Plan (SWPPP) has been developed and is being followed.
Feather River Air Quality Management District (FRAQMD)	Authority to Construct	Yes	Contractor's Fugitive Dust Plan has been developed and submitted to the FRAQMD.
U.S. Fish and Wildlife Service	Endangered Species Act Compliance	Yes	Project design and mitigation measures prevent take of threatened and endangered species. FWS sent a letter on May 7, 2007 agreeing that there were no impacts to any

			endangered species.
National Marine Fisheries Service	Endangered Species Act Compliance	Yes	Project will have no affect on fishery resources and habitats.
California Department of Fish and Game (DFG)	California Endangered Species Act Compliance	Yes	Project design and mitigation measures prevent take of threatened and endangered species.
DFG	Streambed Alteration Agreement	Yes	All ground disturbances is above the Feather River ordinary high water mark. Neither the bed nor bank of the river will be disturbed. DFG sent letter on May 2, 2007 verifying that a Streambed Alteration Agreement was not required.
California State Lands Commission (SLC)	Encroachment Permit	Yes	All ground disturbance is above the Feather River ordinary high water mark and outside SLC jurisdiction.
California Department of Forestry	Conversion of timberland to other uses.	Yes	No timberland conversion is required for the project.
The Resources Agency	Cancellation of Williamson Act Contract	Yes	No Williamson Act contract cancellations are required to implement the project.
California Department of Transportation (Caltrans)	Encroachment on or across a State highway	Yes	Project facilities do not encroach onto a State highway. However, construction equipment will likely use State Route 70 (SR 70). Development and implementation of a traffic control plan is being coordinated with Caltrans.
Caltrans	Encroachment on Caltrans property	Yes	A portion of a stability berm encroaches a short distance onto property owned by Caltrans used for habitat mitigation. A real estate easement for this berm was obtained from Caltrans. No adverse effects to protected habitats occur.
Native American Heritage Commission (NAHC)	Evaluation of effects on Native American burials or artifacts	Yes	Coordination with the NAHC has occurred and no known Native American sites or sensitive areas would be affected by the project
State Office of Historic Preservation (SHPO)	Evaluation of effects on historic and cultural resources	Yes	No known sensitive historic or cultural resources would be affected by the project. SHPO sent letter on July 16, 2007 agreeing that no impacts to historic or cultural resources were occurring.

Reclamation District 784 (RD 784)	Encroachment Permit	Yes	RD 784 is one of the project sponsors and coordination with RD 784 regarding levee encroachments is ongoing. RD 784 signed the application for a CVFPB encroachment permit
Yuba County	Grading Permit	Yes	Yuba County is one of the project sponsors and coordination with the County regarding construction of this project continues.
CEQA	EIR Processed for Various Permits	Yes	EIR certified by the TRLIA board on February 6, 2007 and a Notice of Determination filed with the State Clearinghouse (Number 2006062071) on February 8, 2007
CEQA	EIR Addendum # 2	Yes	EIR addendum for the Seepage berm addition needed to provide the final solution to the cutoff wall trench failure.
Section 104 Credit	Future federal projects cost sharing	Yes	\$32.7 M Section 104 credit approved by Corps HQ on August 7, 2007

**Project Element 5A: Feather River Erosion Site 2**

<b>PERMITTING AGENCY</b>	<b>PERMIT</b>	<b>ACTION DONE</b>	<b>STATUS/COMMENT</b>
Central Valley Flood Protection Board	Encroachment Permits	Yes	Encroachment permit No. 18479 issued on September 10, 2009
Corps	Section 404 Permit	Yes	Obtained Nationwide Permit, application submitted to Corps on June 25, 2009
Corps	Wetlands Delineation	Yes	Delineation submitted to Corps on May 27, 2009
Corps	408 approval of project levee alteration	Yes	Corps does not consider this as eligible under the Section 408 approval given for Segments 1 & 3. Per discussion with the Corps, they will approve work under Section 208 authority when they comment on the CVFPB Encroachment Permit Application.
Regional Water Quality Control Board (RWQCB); Central Valley Region (Region 5)	Section 401 Water Quality Certification	Yes	Obtained on July 9, 2009
RWQCB, Region 5	National Pollution	Yes	TRLIA has a current WDID #

	Discharge Elimination System (NPDES) Permit per Section 402 of the Clean Water Act		5S5BC348901 that was issued by the Regional Water Quality Control Board. The permit covers Feather River Segments 1, 2, and 3 and encompasses the Erosion Site. This permit is current.
Feather River Air Quality Management District (FRAQMD)	Authority to Construct	Yes	Used Documentation provided for Project Element 5
U.S. Fish and Wildlife Service	Endangered Species Act Compliance (Biological Opinion)	Yes	Biological opinion prepared, take avoided, no Incidental Take authorization needed.
National Marine Fisheries Service (NMFS)	Endangered Species Act Compliance	Yes	Biological opinion prepared, take avoided, no Incidental Take authorization needed.
California Department of Fish and Game (DFG)	California Endangered Species Act Compliance (2081)	Yes	No potential take of State listed species.
DFG	Streambed Alteration Agreement	Yes	Obtained on July 9, 2009
Native American Heritage Commission (NAHC)	Evaluation of effects on Native American burials or artifacts	Yes	Cultural resources surveys and consultation with Native American groups have found no evidence of burials or artifacts
State Office of Historic Preservation (SHPO)	Evaluation of effects on historic and cultural resources	Yes	Cultural resources surveys and consultation with Native American groups have found no evidence of significant historic or cultural resources
Reclamation District 784 (RD 784)	Encroachment Permit	Yes	RD 784 is one of the project sponsors and coordination with RD 784 regarding levee encroachments is ongoing. RD 784 signed the application for the Reclamation Board encroachment permit with minor conditions.
Yuba County	Grading Permit	Yes	Used Documentation provided for Project Element 5

State Mining and Geology Board (SMGB)	SMARA Permit	Yes	The Reclamation Plan was approved and SMGB mining permit (No. 91-58-0026) issued for Ella and Platter/JTS Borrow sites on Sept 22, 2009. Used Ella Site.
CEQA	EIR	Yes	ISIMND certified by TRLIA Board on 10/17/06
NEPA	EIS	Yes	No federal action constituting a NEPA trigger
Section 104 Credit	Future federal projects cost sharing	Yes	Work is not eligible for Section 104 Credit because it being accomplished under Section 208 authority and was not approved under Section 408 authority.

<b>Project Element 9 &amp; 9A Permit and Environmental Documentation</b>			
<b>PERMITTING AGENCY</b>	<b>PERMIT</b>	<b>ACTION DONE</b>	<b>STATUS/COMMENT</b>
The Central Valley Flood Protection Board	Encroachment Permit	Yes	Permit No. 18170 BD issued on August 7, 2007.
The Central Valley Flood Protection Board	Encroachment Permit	Yes	Permit No. 18170 BD modified for design changes, issued on 7/17/08
U.S. Army Corps of Engineers (Corps)	Section 10 Permit	Yes	Navigable waterways not affected
Corps	Section 404 Permit	Yes	No jurisdictional features affected. Corps issued "Letter of No Permit Required" on July 23, 2007. Subsequently, a Nationwide permit was received in July 2008 allowing repairs to sinkholes observed on the waterside toe of the existing levee in a reach of the Site 7 Extension segment of levee.
Corps	408 Approval of project levee alteration	Yes	Finding of No Significant Impact (FONSI) issued by Corps of Engineers on July 11, 2007. Corps approved Section 408 alteration on August 2, 2007. Subsequently, water quality certification was received in July 2008 allowing repairs to sinkholes observed on the waterside toe of the existing levee in a reach of

			the Site 7 Extension segment of levee.
Regional Water Quality Control Board (RWQCB); Central Valley Region (Region 5)	Section 401 Water Quality Certification	Yes	No 404 permit triggering 401 compliance. RWQCB sent email on August 15, 2007 verifying that 401 certification was not necessary
RWQCB, Region 5	National Pollution Discharge Elimination System (NPDES) Permit per Section 402 of the Clean Water Act	Yes	A NPDES permit (WDID # 5S5BC348901) was issued on 9/18/07. A Storm water Pollution Prevention Plan (SWPPP) has been developed and is being followed.
Feather River Air Quality Management District (FRAQMD)	Authority to Construct	Yes	Contractor's Fugitive Dust Plan has been developed and submitted to the FRAQMD.
U.S. Fish and Wildlife Service	Endangered Species Act Compliance	Yes	Project design and mitigation measures prevent take of threatened and endangered species. FWS sent a letter on May 7, 2007 agreeing that there were no impacts to any endangered species.
National Marine Fisheries Service	Endangered Species Act Compliance	Yes	Project will have no affect on fishery resources and habitats.
California Department of Fish and Game (DFG)	California Endangered Species Act Compliance	Yes	Project design and mitigation measures prevent take of threatened and endangered species.
DFG	Streambed Alteration Agreement	Yes	All ground disturbance is above the Feather River ordinary high water mark. Neither the bed nor bank of the river will be disturbed. DFG sent letter on May 2, 2007 verifying that a Streambed Alteration Agreement was not required. Subsequently, a streambed authorization permit was received in June 2008 allowing repairs to sinkholes observed on the waterside toe of the existing levee in a reach of the Site 7 Extension segment of levee.
California State Lands Commission (SLC)	Encroachment Permit	Yes	All ground disturbance is above the Feather River ordinary high water mark and outside SLC jurisdiction.
California Department of	Conversion of	Yes	No timberland conversion is required

Forestry	timberland to other uses.		for the project.
The Resources Agency	Cancellation of Williamson Act Contract	Yes	No Williamson Act contract cancellations are required to implement the project.
California Department of Transportation (Caltrans)	Encroachment on or across a State highway	Yes	Project facilities do not encroach onto a State highway. However, construction equipment will likely use State Route 70 (SR 70). Development and implementation of a traffic control plan is being coordinated with Caltrans.
Caltrans	Encroachment on Caltrans property	Yes	A portion of a stability berm encroaches a short distance onto property owned by Caltrans used for habitat mitigation. A real estate easement for this berm was obtained from Caltrans. No adverse effects to protected habitats occur.
Native American Heritage Commission (NAHC)	Evaluation of effects on Native American burials or artifacts	Yes	Coordination with the NAHC has occurred and no known Native American sites or sensitive areas would be affected by the project
State Office of Historic Preservation (SHPO)	Evaluation of effects on historic and cultural resources	Yes	No known sensitive historic or cultural resources would be affected by the project. SHPO sent letter on July 16, 2007 agreeing that no impacts to historic or cultural resources were occurring.
Reclamation District 784 (RD 784)	Encroachment Permit	Yes	RD 784 is one of the project sponsors and coordination with RD 784 regarding levee encroachments is ongoing. RD 784 signed the application for a CVFPB encroachment permit with no objections.
Yuba County	Grading Permit	Yes	Yuba County is one of the project sponsors and coordination with the County regarding construction of this project continues.
CEQA	EIR Processed for Various Permits	Yes	EIR certified by the TRLIA board on February 6, 2007 and a Notice of Determination filed with the State Clearinghouse (Number 2006062071) on February 8, 2007

CEQA	CEQA Addendum #2	Yes	EIR addendum for the Water Blanket modifications.
Section 104 Credit	Future federal projects cost sharing	Yes	\$32.7 M Section 104 credit approved by Corps HQ on August 7, 2007

## **Appendix I**

Appendix I: TRLIA Feather River Levee Improvement Project Eighth Quarterly Progress  
Report Budget Information; May 21, 2010



**Capitol | PFG**

*Crafting Optimal Financial Solutions*

---

---

**MEMORANDUM**

---

---

**TO:** PAUL BRUNNER, EXECUTIVE DIRECTOR, THREE RIVERS LEVEE IMPROVEMENT AUTHORITY

**FROM:** SETH WURZEL

**SUBJECT:** TRLIA FEATHER RIVER LEVEE IMPROVEMENT PROJECT, EIGHTH QUARTERLY PROGRESS REPORT BUDGET INFORMATION

**DATE:** MAY 24, 2010

---

This memorandum has been prepared by Capitol Public Finance Group (CPFG) at the request of Three Rivers Levee Improvement Authority (TRLIA) to supplement the Eighth Quarterly Progress Report (8th QPR) submitted to the Department of Water Resources (DWR) May 25, 2010 for the Feather River Levee Improvement Project (Project). As indicated in TRLIA's 8th QPR, the cost and budget information is being provided within this memorandum to DWR as an attachment to the 8th QPR.

This memorandum includes two sets of tables that present the following analyses:

1. **Quarterly Work Plan Reconciliation** — A reconciliation of the Eighth Quarterly Work Plan forecasted expenditures to the actual expenses incurred for the quarter's work and, the associated funding of the State Share received pursuant to Section 14.C of TRLIA funding agreement with DWR (Funding Agreement).
2. **Cost and Funding Status through the Eighth Quarter** — A summary of the cumulative costs incurred since November 6, 2006 through March 31, 2009<sup>1</sup> and a comparison of those costs incurred to the current Overall Work Plan Budget (based on the revisions by TRLIA submitted on April 26, 2010<sup>2</sup>) included as Exhibit A to the Funding Agreement.

## 1. Quarterly Work Plan Reconciliation

The following tables provide detailed information regarding the costs incurred for each Element and Feature during the 8th Quarter (January 1, 2010 through March 31, 2010) and compare these amounts to the forecasted expenditures for the Quarter presented within the

---

<sup>1</sup> Inclusive of the expenses incurred through March 31, 2009 and paid by TRLIA through the month of April 2010. Reference the May 21, 2010 TRLIA Final Statement of Costs for the 8th Quarter (subject to review and approval by DWR).

<sup>2</sup> On April 26, 2010 TRLIA submitted a Revised Exhibit A that adjusted the Overall Work Plan Budget as part of the 10<sup>th</sup> Quarterly Work Plan based upon the modified funding agreement.

8th Quarterly Work Plan. The tables show the State Share of eligible expenses net of the required 10% withholding of the State Share and compares this amount to the funding received by TRLIA from the State for through the 8th Quarter. Real Estate costs (Elements 1 and 8) and funding are shown separately from the costs and funding for Elements 2 through 9A.

The following presents a summary of the conclusions drawn from the tables:

**8th Quarter Reconciliation Summary (Elements 2 through 7, 9 & 9A)**

	<u>Total</u>	<u>State Share</u>
Total Expenses Incurred During 8th Quarter [1]	<b>\$2,432,889</b>	<b>\$1,993,139</b>
10% Required Retention		-\$199,314
State Share Net of Retention		\$1,793,825
Less Funding Received for State Share		-\$2,807,667
Additional State Funding Received for 8th Quarter [2]		\$0
Required True-Up Adjustment to Future Quarterly Advances		-\$1,013,842

[1] Estimated amount, subject to review and approval by DWR.

[2] Funding received for 8th Quarter is determined by trueing up the prior quarter advances with the funding received from prior advances. The remaining funding from the prior advances is determined to be \$2,807,667.

This information concludes that, for the Eighth Quarter, the State has over-funded its share of the expenses net of the 10% hold-back provision in the Funding Agreement. In November of 2009, the State funded \$13,167,238. Based upon true-ups from all prior quarters, by applying prior advance funds toward these true-ups, the remaining funding available for the 8th Quarter is \$2,807,667 (based upon a draft final statement of costs through the 7th Quarter.) When applying this advance amount to a true-up for the 8th quarter, TRLIA has determined that the State has over funded it's share by approximately \$1,013,842 toward this true-up (however, these true-ups do not account for funding of Segment 1 work). As of the writing of this memorandum, the State has previously processed an additional \$3,504,751, payment which includes advance funding for the 9th Quarter. A final true-up of the 9th Quarter expenses after review by DWR will determine the exact amount of funding for the 9th Quarter and any remaining advance funding due. It is important to note that DWR has still not incorporated Element 5A, Segment 3 Erosion Site 2 and Elements 9 and 9A, Segment 1 and Segment 1 Crack Repair into its true-up calculations. These elements have been approved for funding by DWR at a 70% cost share and the expenses that TRLIA has incurred should be included in the State's true-up calculations. The above calculations by TRLIA do not include these expenses, the State should include these expenses as they review and approve expenses moving forward.

# TRLIA Quarterly Progress Report Real Estate Budget Reconciliation

For Period January/February/March 2010 (8th Qtr)

## ELEMENT 1

Elements and Features	State Share Percentage	8th QWP Forecast Total [1]	8th Qtr Expenses [2]			8th QWP Qtr Funding		
			Total	State Share	Local Share	DWR Direct Pay	Local Credit Invoiced	Total
Formula	a	b	c	d = a*c	e = c - d	f	g	h = f+g
<b>Element 1: Feather River EIP Land Acquisition (see real estate Acquisition Plan)</b>								
Feature 1 - Feather Segment 2 [3]	82.8246%	\$5,500,000	\$0	\$0	\$0	\$65,228	\$0	\$65,228
Feature 1 - Feather Segment 2 [4]	82.8246%	N/A	\$1,968,012	\$1,629,998	\$338,014	\$0	\$0	\$0
Feature 2 - Feather Segment 3	70.0000%	\$0	\$40,250	\$33,337	\$6,913	\$0	\$0	\$0
<b>Subtotal Element 1</b>		<b>\$5,500,000</b>	<b>\$2,008,262</b>	<b>\$1,663,335</b>	<b>\$344,927</b>	<b>\$65,228</b>	<b>\$0</b>	<b>\$65,228</b>
		<b>Difference Between QWP &amp; Actuals</b>	<b>\$3,491,738</b>					

"8QPRElem1"

[1] From the November 18, 2009 8th QWP.

[2] From January 1, 2010 through March 31, 2009

[3] This line represents Real Estate funding received by TRLIA through refunds from Settlements. TRLIA received funding through the appeal and settlement on the Davit Case.

[4] This line represents Real Estate expenses directly funded by TRLIA but eligible for funding through the final accounting package process.

# TRLIA Quarterly Progress Report Real Estate Budget Reconciliation

For Period January/February/March 2010 (8th Qtr)

## ELEMENT 8

Elements and Features	State Share Percentage	8th QWP Forecast Total [1]	8th Qtr Expenses [2]			8th QWP Qtr Funding		
			Total	State Share	Local Share	DWR Direct Pay	Local Credit Invoiced	Total
<i>Formula</i>	a	b	c	d = a*c	e = c - d	f	g	h = f+g
<b>Element 8: Segment 1 Feather River EIP Land Acquisition</b>								
Feature 1 - Feather Segment 1	70.0000%	\$0	\$0	\$0	\$0	\$0	\$0	\$0
<b>Subtotal Element 8</b>		<b>\$0</b>	<b>\$0</b>	<b>\$0</b>	<b>\$0</b>	<b>\$0</b>	<b>\$0</b>	<b>\$0</b>
		<b>Difference Between QWP &amp; Actuals</b>	<b>\$0</b>					

"8QPRElem8"

[1] From the November 18, 2009 8th QWP.

[2] From January 1, 2010 through March 31, 2009

# Summary of TRLIA Quarterly Progress Report Budget Reconciliation

For Period January/February/March 2010 (8th Qtr)

## SUMMARY ALL NON-REAL ESTATE ELEMENTS

Elements and Features	Total 8th QWP Quarter Work Plan	Total Expenses for 8th QWP Quarter	State Share			Local Share		
			To be Funded Net of 10% Holdback	State Funding Rec'd for 8th QWP Quarter	State Funding Remaining to be Received for Quarter	Local Share of Actual Costs for Quarter	Balance of Local Credit Funding Remaining	Remaining Local Share Funded by TRLIA
<i>Formula</i>			a	[1] b	[2] c = a - b	d	[3] e	f = d - e
<b>ALL OTHER ELEMENTS</b>								
Element 2: Segment 2 New Levee	\$1,661,537	\$1,943,760	\$1,448,920	\$0	\$1,448,920	\$333,849	\$0	\$333,849
Element 3: Segment 2 Levee Tie Ins	\$0	\$0	\$0	\$0	\$0	\$0	\$0	\$0
Element 4: Segment 2 Levee Degradation	\$250,000	\$174,775	\$130,281	\$0	\$130,281	\$30,018	\$0	\$30,018
Element 5: Segment 3 Levee Improvement	\$13,000	\$21,686	\$13,662	\$0	\$13,662	\$6,506	\$0	\$6,506
Element 5A: Feather River Segment 3 Erosion Site 2	\$14,000	\$2,506	\$1,579	\$0	\$1,579	\$752	\$0	\$752
Element 6: Land Management	\$24,899	\$1,320	\$984	\$0	\$984	\$227	\$0	\$227
Element 7: PM & Overhead	\$158,101	\$288,842	\$198,399	\$0	\$198,399	\$68,398	\$0	\$68,398
Element 9: Segment 1 Levee Improvement	\$98,693	\$0	\$0	\$0	\$0	\$0	\$0	\$0
Element 9A: Segment 1 Crack Repair	\$11,287	\$0	\$0	\$0	\$0	\$0	\$0	\$0
<b>Subtotal Elements 2 through 7, 9 &amp; 9A</b>	<b>\$2,231,517</b>	<b>\$2,432,889</b>	<b>\$1,793,825</b>	<b>\$0</b>	<b><u>\$1,793,825</u></b>	<b>\$439,750</b>	<b>\$0</b>	<b><u>\$439,750</u></b>
<b>Difference Between QWP &amp; Actuals</b>		<b><u>-\$201,371</u></b>						

"8QPRSumm"

[1] Funding received for 7th QWP Quarter has been received.

[2] Amount represents funding received from the State based on actual expenses for the 7th QWP Quarter. This amount will be offset based on True-Ups adjustments in future quarters.

[3] All remaining local credit has been funded. No additional Local expenses can be offset by Local Credit from the State.

# TRLIA Progress Report Overall Funding Status

Cumulative Through March 2010 (8th Quarter)

## ELEMENT 2

Elements and Features	State Share %	Overall Budget [1]			Actual Expenses to Date [2]			Remaining Budget			Percentage of Total Budget Expended
		Total	State	Local	Total	State Share	Local Share	Total	State Share	Local Share	
Formula	a	b	c	d = b-c	e	f = e*a	g = e-f	h=b-e	i=c-f	j=d-g	k = e/b
<b>Element 2: Feather River Segment 2 new levee</b>											
<b>(Excludes Levee Tie Ins and Existing Levee Degradation)</b>											
2.1.1: Design	82.8246%	\$6,492,466	\$5,361,919	\$1,130,547	\$6,449,982	\$5,342,171	\$1,107,811	\$42,484	\$19,748	\$22,735	99.3%
2.1.2: Permitting	82.8246%	\$2,614,659	\$2,165,581	\$449,079	\$2,574,759	\$2,132,533	\$442,226	\$39,900	\$33,047	\$6,853	98.5%
2.1.3: Right of Way Support	82.8246%	\$5,648,380	\$4,563,633	\$1,084,746	\$4,619,920	\$3,826,430	\$793,491	\$1,028,459	\$737,204	\$291,256	81.8%
2.2: Construction Management	82.8246%	\$6,819,051	\$5,462,613	\$1,356,439	\$5,972,928	\$4,947,053	\$1,025,875	\$846,123	\$515,560	\$330,563	87.6%
2.3 Construction of Setback											
2.3.1: Foundation	82.8246%	\$24,925,485	\$20,583,811	\$4,341,674	\$23,400,334	\$19,381,229	\$4,019,105	\$1,525,151	\$1,202,582	\$322,569	93.9%
2.3.2: Embankment	82.8246%	\$34,213,507	\$26,871,773	\$7,341,734	\$31,317,325	\$25,938,444	\$5,378,881	\$2,896,182	\$933,329	\$1,962,853	91.5%
2.3.3: Reloc. of PG&E Facilities	82.8246%	\$3,051,894	\$2,401,913	\$649,981	\$2,605,433	\$2,157,939	\$447,494	\$446,461	\$243,974	\$202,487	85.4%
2.4: Environmental & Cultural Mitigation											
2.4.1: Mitigation & Restoration	82.8246%	\$5,000,000	\$4,141,457	\$858,543	\$4,761,473	\$3,943,670	\$817,803	\$238,527	\$197,787	\$40,740	95.2%
2.4.2: Cultural Mit./Section 106	82.8246%	\$350,000	\$289,886	\$60,114	\$0	\$0	\$0	\$350,000	\$289,886	\$60,114	0.0%
2.5: O&M Manual	82.8246%	\$168,103	\$139,231	\$28,872	\$9,557	\$7,916	\$1,641	\$158,546	\$131,315	\$27,231	5.7%
<b>Subtotal Element 2</b>		<b>\$89,283,546</b>	<b>\$71,981,817</b>	<b>\$17,301,730</b>	<b>\$81,711,712</b>	<b>\$67,677,385</b>	<b>\$14,034,328</b>	<b>\$7,571,834</b>	<b>\$4,304,432</b>	<b>\$3,267,402</b>	<b>91.5%</b>

"8QPRTotElem2"

[1] Revised per the new OAWP Budget Submitted for the 10th QWP submitted April 26, 2010

[2] Total expenses for project through March 31, 2010 including expenses prior to effective date of agreement

# TRLIA Progress Report Overall Funding Status

Cumulative Through March 2010 (8th Quarter)

## ELEMENT 3

Elements and Features	State Share %	Overall Budget [1]			Actual Expenses to Date [2]			Remaining Budget			Percentage of Total Budget Expended
		Total	State	Local	Total	State Share	Local Share	Total	State Share	Local Share	
<i>Formula</i>	a	b	c	d = b-c	e	f = e*a	g = e-f	h=b-e	i=c-f	j=d-g	k = e/b
<b>Element 3: Feather River Segment 2 Levee Tie Ins</b>											
3.1.1: Foundation	82.8246%	\$6,699,347	\$5,546,048	\$1,153,298	\$5,146,426	\$4,262,505	\$883,920	\$1,552,921	\$1,283,543	\$269,378	76.8%
3.1.2: Embankment	82.8246%	\$5,510,705	\$4,560,827	\$949,878	\$2,538,022	\$2,102,106	\$435,916	\$2,972,683	\$2,458,721	\$513,962	46.1%
<b>Subtotal Element 3</b>		<b>\$12,210,052</b>	<b>\$10,106,875</b>	<b>\$2,103,177</b>	<b>\$7,684,448</b>	<b>\$6,364,612</b>	<b>\$1,319,836</b>	<b>\$4,525,604</b>	<b>\$3,742,264</b>	<b>\$783,341</b>	<b>62.9%</b>

"8QPRTotElem3"

[1] Revised per the new OAWP Budget Submitted for the 10th QWP submitted April 26, 2010

[2] Total expenses for project through March 31, 2010 including expenses prior to effective date of agreement

# TRLIA Progress Report Overall Funding Status

Cumulative Through March 2010 (8th Quarter)

## ELEMENT 4

Elements and Features	State Share %	Overall Budget [1]			Actual Expenses to Date [2]			Remaining Budget			Percentage of Total Budget Expended
		Total	State	Local	Total	State Share	Local Share	Total	State Share	Local Share	
<i>Formula</i>	a	b	c	d = b-c	e	f = e*a	g = e-f	h=b-e	i=c-f	j=d-g	k = e/b
<b>Element 4: Feather River Segment 2 Levee Degradation</b>											
4.1: Construction	82.8246%	\$17,716,213	\$11,806,236	\$5,909,977	\$9,635,572	\$7,980,622	\$1,654,950	\$8,080,641	\$3,825,614	\$4,255,027	54.4%
<b>Subtotal Element 4</b>		<b>\$17,716,213</b>	<b>\$11,806,236</b>	<b>\$5,909,977</b>	<b>\$9,635,572</b>	<b>\$7,980,622</b>	<b>\$1,654,950</b>	<b>\$8,080,641</b>	<b>\$3,825,614</b>	<b>\$4,255,027</b>	<b>54.4%</b>

"8QPRTotElem4"

[1] Revised per the new OAWP Budget Submitted for the 10th QWP submitted April 26, 2010

[2] Total expenses for project through March 31, 2010 including expenses prior to effective date of agreement

# TRLIA Progress Report Overall Funding Status

Cumulative Through March 2010 (8th Quarter)

## ELEMENT 5

Elements and Features	State Share %	Overall Budget [1]			Actual Expenses to Date [2]			Remaining Budget			Percentage of Total Budget Expended
		Total	State	Local	Total	State Share	Local Share	Total	State Share	Local Share	
<i>Formula</i>	a	b	c	d = b-c	e	f = e*a	g = e-f	h=b-e	i=c-f	j=d-g	k = e/b
<b>Element 5: Feather River Segment 3 levee improvement</b>											
5.1.1: Design	70.0000%	\$955,083	\$635,031	\$320,052	\$913,761	\$639,633	\$274,128	\$41,322	-\$4,602	\$45,923	95.7%
5.1.2: Permitting	70.0000%	\$313,096	\$219,167	\$93,929	\$199,015	\$139,310	\$59,704	\$114,081	\$79,857	\$34,224	63.6%
5.1.3: Right of Way Support [4]	70.0000%	\$343,821	\$199,695	\$144,126	\$292,317	\$204,622	\$87,695	\$51,504	-\$4,927	\$56,431	85.0%
5.2: Construction Management	70.0000%	\$1,125,663	\$775,809	\$349,854	\$1,114,123	\$779,886	\$334,237	\$11,540	-\$4,077	\$15,617	99.0%
5.3 Construction	70.0000%	\$8,559,203	\$5,966,867	\$2,592,336	\$8,509,913	\$5,956,939	\$2,552,974	\$49,289	\$9,927	\$39,362	99.4%
5.4: O&M Manual	70.0000%	\$79,052	\$55,336	\$23,716	\$1,683	\$1,178	\$505	\$77,369	\$54,158	\$23,211	2.1%
<b>Subtotal Element 5</b>		<b>\$11,375,917</b>	<b>\$7,851,905</b>	<b>\$3,524,012</b>	<b>\$11,030,812</b>	<b>\$7,721,568</b>	<b>\$3,309,243</b>	<b>\$345,105</b>	<b>\$130,336</b>	<b>\$214,768</b>	<b>97.0%</b>

"8QPRTotElem5"

[1] Revised per the new OAWP Budget Submitted for the 10th QWP submitted April 26, 2010

[2] Total expenses for project through March 31, 2010 including expenses prior to effective date of agreement

# TRLIA Progress Report Overall Funding Status

Cumulative Through March 2010 (8th Quarter)

## ELEMENT 5A

Elements and Features	State Share %	Overall Budget [1]			Actual Expenses to Date [2]			Remaining Budget			Percentage of Total Budget Expended
		Total	State	Local	Total	State Share	Local Share	Total	State Share	Local Share	
Formula	a	b	c	d = b-c	e	f = e*a	g = e-f	h=b-e	i=c-f	j=d-g	k = e/b
<b>Element 5A: Feather River Segment 3 Erosion Site 2</b>											
5A.1.1 - Design	70.0000%	\$67,247	\$47,073	\$20,174	\$53,962	\$37,773	\$16,189	\$13,285	\$9,300	\$3,986	80.2%
5A.1.2 - Permitting	70.0000%	\$135,302	\$94,711	\$40,591	\$111,341	\$77,939	\$33,402	\$23,961	\$16,772	\$7,188	82.3%
5A.1.3 - ROW Support	70.0000%	\$20,000	\$14,000	\$6,000	\$5,830	\$4,081	\$1,749	\$14,170	\$9,919	\$4,251	29.2%
5A.2 - Construction Management.	70.0000%	\$55,239	\$38,667	\$16,572	\$31,634	\$22,144	\$9,490	\$23,605	\$16,523	\$7,081	57.3%
5A.3 - Construction	70.0000%	\$572,212	\$400,548	\$171,664	\$481,751	\$337,226	\$144,525	\$90,461	\$63,323	\$27,138	84.2%
5A.4 - O&M manual addendum	70.0000%	\$5,000	\$3,500	\$1,500	\$0	\$0	\$0	\$5,000	\$3,500	\$1,500	0.0%
<b>Subtotal Element 5A</b>		<b>\$855,000</b>	<b>\$598,500</b>	<b>\$256,500</b>	<b>\$684,518</b>	<b>\$479,163</b>	<b>\$205,355</b>	<b>\$170,482</b>	<b>\$119,337</b>	<b>\$51,145</b>	<b>80.1%</b>

"8QPRTotElem5A"

[1] Revised per the new OAWP Budget Submitted for the 10th QWP submitted April 26, 2010

[2] Total expenses for project through March 31, 2010 including expenses prior to effective date of agreement

# TRLIA Progress Report Overall Funding Status

Cumulative Through March 2010 (8th Quarter)

## ELEMENT 6

Elements and Features	State Share %	Overall Budget [1]			Actual Expenses to Date [2]			Remaining Budget			Percentage of Total Budget Expended
		Total	State	Local	Total	State Share	Local Share	Total	State Share	Local Share	
<i>Formula</i>	a	b	c	d = b-c	e	f = e*a	g = e-f	h=b-e	i=c-f	j=d-g	k = e/b
<b>Element 6: Feather River Land Management</b>											
6.1: Env. Maintenance	82.8246%	\$105,000	\$86,966	\$18,034	\$112,914	\$93,520	\$19,393	-\$7,914	-\$6,555	-\$1,359	107.5%
6.2: Lease Back	82.8246%	\$50,000	\$41,412	\$8,588	\$780	\$646	\$134	\$49,220	\$40,766	\$8,454	1.6%
6.3: Land Maintenance	82.8246%	\$2,150,000	\$1,280,908	\$869,092	\$1,320	\$1,093	\$227	\$2,148,680	\$1,279,815	\$868,865	0.1%
<b>Subtotal Element 6</b>		<b>\$2,305,000</b>	<b>\$1,409,286</b>	<b>\$895,714</b>	<b>\$115,014</b>	<b>\$95,260</b>	<b>\$19,754</b>	<b>\$2,189,986</b>	<b>\$1,314,026</b>	<b>\$875,960</b>	<b>5.0%</b>

"8QPRTotElem6"

[1] Revised per the new OAWP Budget Submitted for the 10th QWP submitted April 26, 2010

[2] Total expenses for project through March 31, 2010 including expenses prior to effective date of agreement

# TRLIA Progress Report Overall Funding Status

Cumulative Through March 2010 (8th Quarter)

## ELEMENT 7

Elements and Features	State Share %	Overall Budget [1]			Actual Expenses to Date [2]			Remaining Budget			Percentage of Total Budget Expended
		Total	State	Local	Total	State Share	Local Share	Total	State Share	Local Share	
<i>Formula</i>	a	b	c	d = b-c	e	f = e*a	g = e-f	h=b-e	i=c-f	j=d-g	k = e/b
<b>Element 7: Project Management, Legal, Community Relations support, Land Management, and Overhead</b>											
7.1: Salaries	76.3198%	\$1,249,737	\$953,797	\$295,940	\$1,115,909	\$851,659	\$264,250	\$133,829	\$102,138	\$31,691	89.3%
7.2: Consulting	76.3198%	\$1,239,571	\$946,038	\$293,533	\$1,290,215	\$984,689	\$305,526	-\$50,644	-\$38,651	-\$11,993	104.1%
7.3: Legal	76.3198%	\$1,195,497	\$912,401	\$283,096	\$1,098,704	\$838,528	\$260,175	\$96,794	\$73,873	\$22,921	91.9%
7.4: Travel	76.3198%	\$9,827	\$7,500	\$2,327	\$8,382	\$6,398	\$1,985	\$1,445	\$1,103	\$342	85.3%
7.5: General	76.3198%	\$350,756	\$267,696	\$83,060	\$275,143	\$209,989	\$65,155	\$75,612	\$57,707	\$17,905	78.4%
7.6: Insurance	76.3198%	\$701,375	\$535,288	\$166,087	\$700,733	\$534,798	\$165,935	\$642	\$490	\$152	99.9%
7.7: Travel/Vehicle	76.3198%	\$26,273	\$20,051	\$6,221	\$18,178	\$13,873	\$4,305	\$8,095	\$6,178	\$1,917	69.2%
7.8: Memberships	76.3198%	\$18,804	\$14,351	\$4,453	\$6,691	\$5,106	\$1,584	\$12,113	\$9,245	\$2,868	35.6%
<b>Subtotal Element 7</b>		<b>\$4,791,840</b>	<b>\$3,657,123</b>	<b>\$1,134,718</b>	<b>\$4,513,955</b>	<b>\$3,445,041</b>	<b>\$1,068,914</b>	<b>\$277,886</b>	<b>\$212,082</b>	<b>\$65,804</b>	<b>94.2%</b>

"8QPRTotElem7"

[1] Revised per the new OAWP Budget Submitted for the 10th QWP submitted April 26, 2010

[2] Total expenses for project through March 31, 2010 including expenses prior to effective date of agreement

# TRLIA Progress Report Overall Funding Status

Cumulative Through March 2010 (8th Quarter)

## ELEMENT 9

Elements and Features	State Share %	Overall Budget [1]			Actual Expenses to Date [2]			Remaining Budget			Percentage of Total Budget Expended
		Total	State	Local	Total	State Share	Local Share	Total	State Share	Local Share	
<i>Formula</i>	a	b	c	d = b-c	e	f = e*a	g = e-f	h=b-e	i=c-f	j=d-g	k = e/b
<b>Element 9: Feather River Segment 1 Levee Improvement</b>											
Feature 9.1.1 - Design	70.0000%	\$1,395,322	\$976,725	\$418,597	\$1,169,991	\$818,994	\$350,997	\$225,331	\$157,732	\$67,599	83.9%
Feature 9.1.2 - Permitting	70.0000%	\$355,934	\$249,154	\$106,780	\$194,263	\$135,984	\$58,279	\$161,672	\$113,170	\$48,501	54.6%
Feature 9.1.3 - ROW Support	70.0000%	\$245,781	\$172,047	\$73,734	\$218,062	\$152,644	\$65,419	\$27,718	\$19,403	\$8,316	88.7%
Feature 9.2 - Construction Mgt.	70.0000%	\$1,561,680	\$1,093,176	\$468,504	\$1,369,282	\$958,498	\$410,785	\$192,398	\$134,678	\$57,719	87.7%
Feature 9.3 - Construction	70.0000%	\$10,318,414	\$7,222,890	\$3,095,524	\$9,076,695	\$6,353,687	\$2,723,009	\$1,241,719	\$869,203	\$372,516	88.0%
Feature 9.4 - O&M Segment 1	70.0000%	\$92,597	\$64,818	\$27,779	\$1,029	\$720	\$309	\$91,569	\$64,098	\$27,471	1.1%
<b>Subtotal Element 9</b>		<b>\$13,969,728</b>	<b>\$9,778,810</b>	<b>\$4,190,918</b>	<b>\$12,029,322</b>	<b>\$8,420,525</b>	<b>\$3,608,797</b>	<b>\$1,940,406</b>	<b>\$1,358,284</b>	<b>\$582,122</b>	<b>86.1%</b>

"8QPRTotElem9"

[1] Revised per the new OAWP Budget Submitted for the 10th QWP submitted April 26, 2010

[2] Total expenses for project through March 31, 2010 including expenses prior to effective date of agreement

# TRLIA Progress Report Overall Funding Status

Cumulative Through March 2010 (8th Quarter)

## ELEMENT 9A

Elements and Features	State Share %	Overall Budget [1]			Actual Expenses to Date [2]			Remaining Budget			Percentage of Total Budget Expended
		Total	State	Local	Total	State Share	Local Share	Total	State Share	Local Share	
<i>Formula</i>	<i>a</i>	<i>b</i>	<i>c</i>	<i>d = b-c</i>	<i>e</i>	<i>f = e*a</i>	<i>g = e-f</i>	<i>h=b-e</i>	<i>i=c-f</i>	<i>j=d-g</i>	<i>k = e/b</i>
<b>Element 9A: Feather River Segment 1 Crack Repair</b>											
Feature 1.1 - Engineering, Design, P	70.0000%	\$675,000	\$472,500	\$202,500	\$71,852	\$50,296	\$21,556	\$603,148	\$422,204	\$180,944	10.6%
Feature 1.2 - Right of Way Support	70.0000%	\$15,000	\$10,500	\$4,500	\$0	\$0	\$0	\$15,000	\$10,500	\$4,500	0.0%
Feature 2 - Construction	70.0000%	\$1,300,000	\$910,000	\$390,000	\$432,119	\$302,483	\$129,636	\$867,881	\$607,517	\$260,364	33.2%
Feature 3 - Operations & Maintenance	70.0000%	\$10,000	\$7,000	\$3,000	\$0	\$0	\$0	\$10,000	\$7,000	\$3,000	0.0%
<b>Subtotal Element 9A</b>		<b>\$2,000,000</b>	<b>\$1,400,000</b>	<b>\$600,000</b>	<b>\$503,971</b>	<b>\$352,780</b>	<b>\$151,191</b>	<b>\$1,496,029</b>	<b>\$1,047,220</b>	<b>\$448,809</b>	<b>25.2%</b>

- 14 -

"8QPRTotElem9A"

[1] Revised per the new OAWP Budget Submitted for the 10th QWP submitted April 26, 2010

[2] Total expenses for project through March 31, 2010 including expenses prior to effective date of agreement

## 2. Cost and Funding Status through the 8th Quarter

The following set of tables present the status of the project on cumulative expenditure basis as it relates to the current Overall Work Plan Budget (based on the revisions made by TRLIA submitted with the 10th QWP on April 26, 2010).

In summary, through March 31, 2010, TRLIA has incurred expenses for the project which represent 83.5% of the total amended budget for Elements 1 through 9A (\$167.4 million of the now \$176.2 million dollar total budget currently eligible for State Sharing ). TRLIA has received a total of \$115.8 million of State Funding, approximately 74.8% of its share of current total State Budget of \$154.78 million. The State has agreed to additional funding as stated in the 8th QPR, and the amendment to the funding agreement is now finalized.

With respect to the individual feature budgets within elements, only one feature has exceeded the revised total Overall Work Plan Budgets by greater than 5%. This features is:

- Element 6 – Feature 1 Environmental Maintenance (it has been highlighted in the following table set for clarity);

The following discussion outlines an explanation of this budget overrun.

### **Environmental Maintenance (Feature 6.1 - Element 6)**

The total budget for insurance is \$105,000. The expenses through the 7th Quarter Total \$112,914. TRLIA has reviewed the Element 6 scope of work and will cover this budget overrun with the remaining budget in the Element.

# Summary of TRLIA Progress Report Overall Funding Status

Cumulative Through March 2010 (8th Quarter)

## SUMMARY ALL ELEMENTS

Elements and Features	Overall Budget [1]			Actual Expenses to Date [2]			Remaining Budget			Percentage of Total Budget Expended
	Total	State	Local	Total	State Share	Local Share	Total	State Share	Local Share	
<i>Formula</i>	a	b	c = a - b	d	e	f = d - e	g = a - d	h = b - e	i = c - f	j = d/a
<b>Quarterly Progress Report Reconciliation</b>										
Element 1: Feather River EIP Land Acquisition	\$45,374,422	\$35,754,832	\$9,619,590	\$39,418,253	\$32,648,004	\$6,770,250	\$5,956,169	\$3,106,829	\$2,849,340	86.9%
Element 8: Feather River Segment 1 Land Acquisitic	\$630,272	\$441,190	\$189,082	\$96,453	\$79,887	\$16,566	\$533,819	\$361,303	\$172,515	15.3%
Element 2: Segment 2 New Levee	\$89,283,546	\$71,981,817	\$17,301,730	\$81,711,712	\$67,677,385	\$14,034,328	\$7,571,834	\$4,304,432	\$3,267,402	91.5%
Element 3: Segment 2 Levee Tie Ins	\$12,210,052	\$10,106,875	\$2,103,177	\$7,684,448	\$6,364,612	\$1,319,836	\$4,525,604	\$3,742,264	\$783,341	62.9%
Element 4: Segment 2 Levee Degradation	\$17,716,213	\$11,806,236	\$5,909,977	\$9,635,572	\$7,980,622	\$1,654,950	\$8,080,641	\$3,825,614	\$4,255,027	54.4%
Element 5: Segment 3 Levee Improvement	\$11,375,917	\$7,851,905	\$3,524,012	\$11,030,812	\$7,721,568	\$3,309,243	\$345,105	\$130,336	\$214,768	97.0%
Element 5A: Feather River Segment 3 Erosion Site 2	\$855,000	\$598,500	\$256,500	\$684,518	\$479,163	\$205,355	\$170,482	\$119,337	\$51,145	80.1%
Element 6: Land Management	\$2,305,000	\$1,409,286	\$895,714	\$115,014	\$95,260	\$19,754	\$2,189,986	\$1,314,026	\$875,960	5.0%
Element 7: PM & Overhead	\$4,791,840	\$3,657,123	\$1,134,718	\$4,513,955	\$3,445,041	\$1,068,914	\$277,886	\$212,082	\$65,804	94.2%
Element 9: Segment 1 Levee Improvement	\$13,969,728	\$9,778,810	\$4,190,918	\$12,029,322	\$8,420,525	\$3,608,797	\$1,940,406	\$1,358,284	\$582,122	86.1%
Element 9A: Segment 1 Crack Repair	\$2,000,000	\$1,400,000	\$600,000	\$503,971	\$352,780	\$151,191	\$1,496,029	\$1,047,220	\$448,809	25.2%
<b>Subtotal Elements 1 through 9A</b>	<b>\$200,511,990</b>	<b>\$154,786,573</b>	<b>\$45,725,417</b>	<b>\$167,424,030</b>	<b>\$135,264,846</b>	<b>\$32,159,184</b>	<b>\$33,087,960</b>	<b>\$19,521,728</b>	<b>\$13,566,233</b>	<b>83.5%</b>
<b>State Funding Received Through 7th Quarter [3]</b>										
State Share of Real Estate Advances	\$26,194,668									
Construction Funding	\$75,144,265									
Credit Funding Received	\$14,418,819									
Total Funding Received	\$115,757,752									
Percentage of State Budget Funded	74.8% (Through December 2009)									

"8QPRTotSumm"

- [1] Revised per the new OAWP Budget Submitted for the 10th QWP submitted April 26, 2010  
 [2] Total expenses for project through March 31, 2010 including expenses prior to effective date of agreement  
 [3] Based upon State Payment Worksheet prepared on 1-26-10.

# TRLIA Progress Report Overall Funding Status

Cumulative Through March 2010 (8th Quarter)

## ELEMENT 1

Elements and Features	State Share Percentage	Overall Budget [1]			Actual Expenses to Date [2]			Remaining Budget			Percentage of Total Budget Expended
		Total	State	Local	Total	State Share	Local Share	Total	State Share	Local Share	
<i>Formula</i>	<i>a</i>	<i>b</i>	<i>c</i>	<i>d = b-c</i>	<i>e</i>	<i>f = e*a</i>	<i>g = e-f</i>	<i>h=b-e</i>	<i>i=c-f</i>	<i>j=d-g</i>	<i>k = e/b</i>
<b>Element 1: Feather River EIP Land Acquisition</b> (see real estate Acquisition Plan)											
1.1 - Feather Segment 2	82.8246%	\$44,905,000	\$35,426,237	\$9,478,763	\$39,297,909	\$32,548,329	\$6,749,580	\$5,607,091	\$2,877,908	\$2,729,183	87.5%
1.2 - Feather Segment 3	70.0000%	\$469,422	\$328,595	\$140,827	\$120,345	\$99,675	\$20,670	\$349,077	\$228,920	\$120,157	25.6%
<b>Subtotal Element 1</b>		<b>\$45,374,422</b>	<b>\$35,754,832</b>	<b>\$9,619,590</b>	<b>\$39,418,253</b>	<b>\$32,648,004</b>	<b>\$6,770,250</b>	<b>\$5,956,169</b>	<b>\$3,106,829</b>	<b>\$2,849,340</b>	<b>86.9%</b>

"8QPRTotElem1"

[1] Revised per the new OAWP Budget Submitted for the 10th QWP submitted April 26, 2010

[2] Total expenses for project through March 31, 2010 including expenses prior to effective date of agreement

# TRLIA Progress Report Overall Funding Status

Cumulative Through March 2010 (8th Quarter)

## ELEMENT 2

Elements and Features	State Share %	Overall Budget [1]			Actual Expenses to Date [2]			Remaining Budget			Percentage of Total Budget Expended
		Total	State	Local	Total	State Share	Local Share	Total	State Share	Local Share	
Formula	a	b	c	d = b-c	e	f = e*a	g = e-f	h=b-e	i=c-f	j=d-g	k = e/b
<b>Element 2: Feather River Segment 2 new levee</b>											
<b>(Excludes Levee Tie Ins and Existing Levee Degradation)</b>											
2.1.1: Design	82.8246%	\$6,492,466	\$5,361,919	\$1,130,547	\$6,449,982	\$5,342,171	\$1,107,811	\$42,484	\$19,748	\$22,735	99.3%
2.1.2: Permitting	82.8246%	\$2,614,659	\$2,165,581	\$449,079	\$2,574,759	\$2,132,533	\$442,226	\$39,900	\$33,047	\$6,853	98.5%
2.1.3: Right of Way Support	82.8246%	\$5,648,380	\$4,563,633	\$1,084,746	\$4,619,920	\$3,826,430	\$793,491	\$1,028,459	\$737,204	\$291,256	81.8%
2.2: Construction Management	82.8246%	\$6,819,051	\$5,462,613	\$1,356,439	\$5,972,928	\$4,947,053	\$1,025,875	\$846,123	\$515,560	\$330,563	87.6%
2.3 Construction of Setback											
2.3.1: Foundation	82.8246%	\$24,925,485	\$20,583,811	\$4,341,674	\$23,400,334	\$19,381,229	\$4,019,105	\$1,525,151	\$1,202,582	\$322,569	93.9%
2.3.2: Embankment	82.8246%	\$34,213,507	\$26,871,773	\$7,341,734	\$31,317,325	\$25,938,444	\$5,378,881	\$2,896,182	\$933,329	\$1,962,853	91.5%
2.3.3: Reloc. of PG&E Facilities	82.8246%	\$3,051,894	\$2,401,913	\$649,981	\$2,605,433	\$2,157,939	\$447,494	\$446,461	\$243,974	\$202,487	85.4%
2.4: Environmental & Cultural Mitigation											
2.4.1: Mitigation & Restoration	82.8246%	\$5,000,000	\$4,141,457	\$858,543	\$4,761,473	\$3,943,670	\$817,803	\$238,527	\$197,787	\$40,740	95.2%
2.4.2: Cultural Mit./Section 106	82.8246%	\$350,000	\$289,886	\$60,114	\$0	\$0	\$0	\$350,000	\$289,886	\$60,114	0.0%
2.5: O&M Manual	82.8246%	\$168,103	\$139,231	\$28,872	\$9,557	\$7,916	\$1,641	\$158,546	\$131,315	\$27,231	5.7%
<b>Subtotal Element 2</b>		<b>\$89,283,546</b>	<b>\$71,981,817</b>	<b>\$17,301,730</b>	<b>\$81,711,712</b>	<b>\$67,677,385</b>	<b>\$14,034,328</b>	<b>\$7,571,834</b>	<b>\$4,304,432</b>	<b>\$3,267,402</b>	<b>91.5%</b>

"8QPRTotElem2"

[1] Revised per the new OAWP Budget Submitted for the 10th QWP submitted April 26, 2010

[2] Total expenses for project through March 31, 2010 including expenses prior to effective date of agreement

# TRLIA Progress Report Overall Funding Status

Cumulative Through March 2010 (8th Quarter)

## ELEMENT 3

Elements and Features	State Share %	Overall Budget [1]			Actual Expenses to Date [2]			Remaining Budget			Percentage of Total Budget Expended
		Total	State	Local	Total	State Share	Local Share	Total	State Share	Local Share	
<i>Formula</i>	a	b	c	d = b-c	e	f = e*a	g = e-f	h=b-e	i=c-f	j=d-g	k = e/b
<b>Element 3: Feather River Segment 2 Levee Tie Ins</b>											
3.1.1: Foundation	82.8246%	\$6,699,347	\$5,546,048	\$1,153,298	\$5,146,426	\$4,262,505	\$883,920	\$1,552,921	\$1,283,543	\$269,378	76.8%
3.1.2: Embankment	82.8246%	\$5,510,705	\$4,560,827	\$949,878	\$2,538,022	\$2,102,106	\$435,916	\$2,972,683	\$2,458,721	\$513,962	46.1%
<b>Subtotal Element 3</b>		<b>\$12,210,052</b>	<b>\$10,106,875</b>	<b>\$2,103,177</b>	<b>\$7,684,448</b>	<b>\$6,364,612</b>	<b>\$1,319,836</b>	<b>\$4,525,604</b>	<b>\$3,742,264</b>	<b>\$783,341</b>	<b>62.9%</b>

"8QPRTotElem3"

[1] Revised per the new OAWP Budget Submitted for the 10th QWP submitted April 26, 2010

[2] Total expenses for project through March 31, 2010 including expenses prior to effective date of agreement

# TRLIA Progress Report Overall Funding Status

Cumulative Through March 2010 (8th Quarter)

## ELEMENT 4

Elements and Features	State Share %	Overall Budget [1]			Actual Expenses to Date [2]			Remaining Budget			Percentage of Total Budget Expended
		Total	State	Local	Total	State Share	Local Share	Total	State Share	Local Share	
<i>Formula</i>	a	b	c	d = b-c	e	f = e*a	g = e-f	h=b-e	i=c-f	j=d-g	k = e/b
<b>Element 4: Feather River Segment 2 Levee Degradation</b>											
4.1: Construction	82.8246%	\$17,716,213	\$11,806,236	\$5,909,977	\$9,635,572	\$7,980,622	\$1,654,950	\$8,080,641	\$3,825,614	\$4,255,027	54.4%
<b>Subtotal Element 4</b>		<b>\$17,716,213</b>	<b>\$11,806,236</b>	<b>\$5,909,977</b>	<b>\$9,635,572</b>	<b>\$7,980,622</b>	<b>\$1,654,950</b>	<b>\$8,080,641</b>	<b>\$3,825,614</b>	<b>\$4,255,027</b>	<b>54.4%</b>

"8QPRTotElem4"

[1] Revised per the new OAWP Budget Submitted for the 10th QWP submitted April 26, 2010

[2] Total expenses for project through March 31, 2010 including expenses prior to effective date of agreement

# TRLIA Progress Report Overall Funding Status

Cumulative Through March 2010 (8th Quarter)

## ELEMENT 5

Elements and Features	State Share %	Overall Budget [1]			Actual Expenses to Date [2]			Remaining Budget			Percentage of Total Budget Expended
		Total	State	Local	Total	State Share	Local Share	Total	State Share	Local Share	
<i>Formula</i>	<i>a</i>	<i>b</i>	<i>c</i>	<i>d = b-c</i>	<i>e</i>	<i>f = e*a</i>	<i>g = e-f</i>	<i>h=b-e</i>	<i>i=c-f</i>	<i>j=d-g</i>	<i>k = e/b</i>
<b>Element 5: Feather River Segment 3 levee improvement</b>											
5.1.1: Design	70.0000%	\$955,083	\$635,031	\$320,052	\$913,761	\$639,633	\$274,128	\$41,322	-\$4,602	\$45,923	95.7%
5.1.2: Permitting	70.0000%	\$313,096	\$219,167	\$93,929	\$199,015	\$139,310	\$59,704	\$114,081	\$79,857	\$34,224	63.6%
5.1.3: Right of Way Support [4]	70.0000%	\$343,821	\$199,695	\$144,126	\$292,317	\$204,622	\$87,695	\$51,504	-\$4,927	\$56,431	85.0%
5.2: Construction Management	70.0000%	\$1,125,663	\$775,809	\$349,854	\$1,114,123	\$779,886	\$334,237	\$11,540	-\$4,077	\$15,617	99.0%
5.3 Construction	70.0000%	\$8,559,203	\$5,966,867	\$2,592,336	\$8,509,913	\$5,956,939	\$2,552,974	\$49,289	\$9,927	\$39,362	99.4%
5.4: O&M Manual	70.0000%	\$79,052	\$55,336	\$23,716	\$1,683	\$1,178	\$505	\$77,369	\$54,158	\$23,211	2.1%
<b>Subtotal Element 5</b>		<b>\$11,375,917</b>	<b>\$7,851,905</b>	<b>\$3,524,012</b>	<b>\$11,030,812</b>	<b>\$7,721,568</b>	<b>\$3,309,243</b>	<b>\$345,105</b>	<b>\$130,336</b>	<b>\$214,768</b>	<b>97.0%</b>

"8QPRTotElem5"

[1] Revised per the new OAWP Budget Submitted for the 10th QWP submitted April 26, 2010

[2] Total expenses for project through March 31, 2010 including expenses prior to effective date of agreement

# TRLIA Progress Report Overall Funding Status

Cumulative Through March 2010 (8th Quarter)

## ELEMENT 5A

Elements and Features	State Share %	Overall Budget [1]			Actual Expenses to Date [2]			Remaining Budget			Percentage of Total Budget Expended
		Total	State	Local	Total	State Share	Local Share	Total	State Share	Local Share	
Formula	a	b	c	d = b-c	e	f = e*a	g = e-f	h=b-e	i=c-f	j=d-g	k = e/b
<b>Element 5A: Feather River Segment 3 Erosion Site 2</b>											
5A.1.1 - Design	70.0000%	\$67,247	\$47,073	\$20,174	\$53,962	\$37,773	\$16,189	\$13,285	\$9,300	\$3,986	80.2%
5A.1.2 - Permitting	70.0000%	\$135,302	\$94,711	\$40,591	\$111,341	\$77,939	\$33,402	\$23,961	\$16,772	\$7,188	82.3%
5A.1.3 - ROW Support	70.0000%	\$20,000	\$14,000	\$6,000	\$5,830	\$4,081	\$1,749	\$14,170	\$9,919	\$4,251	29.2%
5A.2 - Construction Management.	70.0000%	\$55,239	\$38,667	\$16,572	\$31,634	\$22,144	\$9,490	\$23,605	\$16,523	\$7,081	57.3%
5A.3 - Construction	70.0000%	\$572,212	\$400,548	\$171,664	\$481,751	\$337,226	\$144,525	\$90,461	\$63,323	\$27,138	84.2%
5A.4 - O&M manual addendum	70.0000%	\$5,000	\$3,500	\$1,500	\$0	\$0	\$0	\$5,000	\$3,500	\$1,500	0.0%
<b>Subtotal Element 5A</b>		<b>\$855,000</b>	<b>\$598,500</b>	<b>\$256,500</b>	<b>\$684,518</b>	<b>\$479,163</b>	<b>\$205,355</b>	<b>\$170,482</b>	<b>\$119,337</b>	<b>\$51,145</b>	<b>80.1%</b>

"8QPRTotElem5A"

[1] Revised per the new OAWP Budget Submitted for the 10th QWP submitted April 26, 2010

[2] Total expenses for project through March 31, 2010 including expenses prior to effective date of agreement

# TRLIA Progress Report Overall Funding Status

Cumulative Through March 2010 (8th Quarter)

## ELEMENT 6

Elements and Features	State Share %	Overall Budget [1]			Actual Expenses to Date [2]			Remaining Budget			Percentage of Total Budget Expended
		Total	State	Local	Total	State Share	Local Share	Total	State Share	Local Share	
<i>Formula</i>	a	b	c	d = b-c	e	f = e*a	g = e-f	h=b-e	i=c-f	j=d-g	k = e/b
<b>Element 6: Feather River Land Management</b>											
6.1: Env. Maintenance	82.8246%	\$105,000	\$86,966	\$18,034	\$112,914	\$93,520	\$19,393	-\$7,914	-\$6,555	-\$1,359	107.5%
6.2: Lease Back	82.8246%	\$50,000	\$41,412	\$8,588	\$780	\$646	\$134	\$49,220	\$40,766	\$8,454	1.6%
6.3: Land Maintenance	82.8246%	\$2,150,000	\$1,280,908	\$869,092	\$1,320	\$1,093	\$227	\$2,148,680	\$1,279,815	\$868,865	0.1%
<b>Subtotal Element 6</b>		<b>\$2,305,000</b>	<b>\$1,409,286</b>	<b>\$895,714</b>	<b>\$115,014</b>	<b>\$95,260</b>	<b>\$19,754</b>	<b>\$2,189,986</b>	<b>\$1,314,026</b>	<b>\$875,960</b>	<b>5.0%</b>

"8QPRTotElem6"

[1] Revised per the new OAWP Budget Submitted for the 10th QWP submitted April 26, 2010

[2] Total expenses for project through March 31, 2010 including expenses prior to effective date of agreement

# TRLIA Progress Report Overall Funding Status

Cumulative Through March 2010 (8th Quarter)

## ELEMENT 7

Elements and Features	State Share %	Overall Budget [1]			Actual Expenses to Date [2]			Remaining Budget			Percentage of Total Budget Expended
		Total	State	Local	Total	State Share	Local Share	Total	State Share	Local Share	
<i>Formula</i>	a	b	c	d = b-c	e	f = e*a	g = e-f	h=b-e	i=c-f	j=d-g	k = e/b
<b>Element 7: Project Management, Legal, Community Relations support, Land Management, and Overhead</b>											
7.1: Salaries	76.3198%	\$1,249,737	\$953,797	\$295,940	\$1,115,909	\$851,659	\$264,250	\$133,829	\$102,138	\$31,691	89.3%
7.2: Consulting	76.3198%	\$1,239,571	\$946,038	\$293,533	\$1,290,215	\$984,689	\$305,526	-\$50,644	-\$38,651	-\$11,993	104.1%
7.3: Legal	76.3198%	\$1,195,497	\$912,401	\$283,096	\$1,098,704	\$838,528	\$260,175	\$96,794	\$73,873	\$22,921	91.9%
7.4: Travel	76.3198%	\$9,827	\$7,500	\$2,327	\$8,382	\$6,398	\$1,985	\$1,445	\$1,103	\$342	85.3%
7.5: General	76.3198%	\$350,756	\$267,696	\$83,060	\$275,143	\$209,989	\$65,155	\$75,612	\$57,707	\$17,905	78.4%
7.6: Insurance	76.3198%	\$701,375	\$535,288	\$166,087	\$700,733	\$534,798	\$165,935	\$642	\$490	\$152	99.9%
7.7: Travel/Vehicle	76.3198%	\$26,273	\$20,051	\$6,221	\$18,178	\$13,873	\$4,305	\$8,095	\$6,178	\$1,917	69.2%
7.8: Memberships	76.3198%	\$18,804	\$14,351	\$4,453	\$6,691	\$5,106	\$1,584	\$12,113	\$9,245	\$2,868	35.6%
<b>Subtotal Element 7</b>		<b>\$4,791,840</b>	<b>\$3,657,123</b>	<b>\$1,134,718</b>	<b>\$4,513,955</b>	<b>\$3,445,041</b>	<b>\$1,068,914</b>	<b>\$277,886</b>	<b>\$212,082</b>	<b>\$65,804</b>	<b>94.2%</b>

"8QPRTotElem7"

[1] Revised per the new OAWP Budget Submitted for the 10th QWP submitted April 26, 2010

[2] Total expenses for project through March 31, 2010 including expenses prior to effective date of agreement

# TRLIA Progress Report Overall Funding Status

Cumulative Through March 2010 (8th Quarter)

## ELEMENT 8

Elements and Features	State Share	Overall Budget [1]			Actual Expenses to Date [2]			Remaining Budget			Percentage of Total Budget Expended k = e/b
		Total	State	Local	Total	State	Local	Total	State	Local	
<i>Formula</i>	a	b	c	d = b-c	e	f = e*a	g = e-f	h=b-e	i=c-f	j=d-g	k = e/b
<b>Element 8: Segment 1 Feather River EIP</b>											
<b>Land Acquisition</b>											
8.1 - Feather Segment 1	70.0000%	\$630,272	\$441,190	\$189,082	\$96,453	\$79,887	\$16,566	\$533,819	\$361,303	\$172,515	15.3%
<b>Subtotal Element 8</b>		<b>\$630,272</b>	<b>\$441,190</b>	<b>\$189,082</b>	<b>\$96,453</b>	<b>\$79,887</b>	<b>\$16,566</b>	<b>\$533,819</b>	<b>\$361,303</b>	<b>\$172,515</b>	<b>15.3%</b>

"8QPRTotElem8"

[1] Revised per the new OAWP Budget Submitted for the 10th QWP submitted April 26, 2010

[2] Total expenses for project through March 31, 2010 including expenses prior to effective date of agreement

# TRLIA Progress Report Overall Funding Status

Cumulative Through March 2010 (8th Quarter)

## ELEMENT 9

Elements and Features	State Share %	Overall Budget [1]			Actual Expenses to Date [2]			Remaining Budget			Percentage of Total Budget Expended
		Total	State	Local	Total	State Share	Local Share	Total	State Share	Local Share	
<i>Formula</i>	<i>a</i>	<i>b</i>	<i>c</i>	<i>d = b-c</i>	<i>e</i>	<i>f = e*a</i>	<i>g = e-f</i>	<i>h=b-e</i>	<i>i=c-f</i>	<i>j=d-g</i>	<i>k = e/b</i>
<b>Element 9: Feather River Segment 1 Levee Improvement</b>											
Feature 9.1.1 - Design	70.0000%	\$1,395,322	\$976,725	\$418,597	\$1,169,991	\$818,994	\$350,997	\$225,331	\$157,732	\$67,599	83.9%
Feature 9.1.2 - Permitting	70.0000%	\$355,934	\$249,154	\$106,780	\$194,263	\$135,984	\$58,279	\$161,672	\$113,170	\$48,501	54.6%
Feature 9.1.3 - ROW Support	70.0000%	\$245,781	\$172,047	\$73,734	\$218,062	\$152,644	\$65,419	\$27,718	\$19,403	\$8,316	88.7%
Feature 9.2 - Construction Mgt.	70.0000%	\$1,561,680	\$1,093,176	\$468,504	\$1,369,282	\$958,498	\$410,785	\$192,398	\$134,678	\$57,719	87.7%
Feature 9.3 - Construction	70.0000%	\$10,318,414	\$7,222,890	\$3,095,524	\$9,076,695	\$6,353,687	\$2,723,009	\$1,241,719	\$869,203	\$372,516	88.0%
Feature 9.4 - O&M Segment 1	70.0000%	\$92,597	\$64,818	\$27,779	\$1,029	\$720	\$309	\$91,569	\$64,098	\$27,471	1.1%
<b>Subtotal Element 9</b>		<b>\$13,969,728</b>	<b>\$9,778,810</b>	<b>\$4,190,918</b>	<b>\$12,029,322</b>	<b>\$8,420,525</b>	<b>\$3,608,797</b>	<b>\$1,940,406</b>	<b>\$1,358,284</b>	<b>\$582,122</b>	<b>86.1%</b>

"8QPRTotElem9"

[1] Revised per the new OAWP Budget Submitted for the 10th QWP submitted April 26, 2010

[2] Total expenses for project through March 31, 2010 including expenses prior to effective date of agreement

# TRLIA Progress Report Overall Funding Status

Cumulative Through March 2010 (8th Quarter)

## ELEMENT 9A

Elements and Features	State Share %	Overall Budget [1]			Actual Expenses to Date [2]			Remaining Budget			Percentage of Total Budget Expended
		Total	State	Local	Total	State Share	Local Share	Total	State Share	Local Share	
<i>Formula</i>	<i>a</i>	<i>b</i>	<i>c</i>	<i>d = b-c</i>	<i>e</i>	<i>f = e*a</i>	<i>g = e-f</i>	<i>h=b-e</i>	<i>i=c-f</i>	<i>j=d-g</i>	<i>k = e/b</i>
<b>Element 9A: Feather River Segment 1 Crack Repair</b>											
Feature 1.1 - Engineering, Design, P	70.0000%	\$675,000	\$472,500	\$202,500	\$71,852	\$50,296	\$21,556	\$603,148	\$422,204	\$180,944	10.6%
Feature 1.2 - Right of Way Support	70.0000%	\$15,000	\$10,500	\$4,500	\$0	\$0	\$0	\$15,000	\$10,500	\$4,500	0.0%
Feature 2 - Construction	70.0000%	\$1,300,000	\$910,000	\$390,000	\$432,119	\$302,483	\$129,636	\$867,881	\$607,517	\$260,364	33.2%
Feature 3 - Operations & Maintenance	70.0000%	\$10,000	\$7,000	\$3,000	\$0	\$0	\$0	\$10,000	\$7,000	\$3,000	0.0%
<b>Subtotal Element 9A</b>		<b>\$2,000,000</b>	<b>\$1,400,000</b>	<b>\$600,000</b>	<b>\$503,971</b>	<b>\$352,780</b>	<b>\$151,191</b>	<b>\$1,496,029</b>	<b>\$1,047,220</b>	<b>\$448,809</b>	<b>25.2%</b>

"8QPRTotElem9A"

[1] Revised per the new OAWP Budget Submitted for the 10th QWP submitted April 26, 2010

[2] Total expenses for project through March 31, 2010 including expenses prior to effective date of agreement