



TRLIA
6th QUARTERLY
PROGRESS REPORT
FOR
FEATHER RIVER LEVEE
IMPROVEMENT PROJECT

- 1. Quarterly Progress Report (QPR) for 6th Quarter: July 1 – September 30, 2009**
- 2. Date of Report: November 15, 2009**
- 3. Purpose of Quarterly Report:** This report summarizes the work completed in the 6th quarter.
- 4. Specific Project Element Information:**
 - **Major accomplishments this quarter (i.e. tasks completed, milestones met, meetings held or attended, press releases, etc.)**
 - Project Element 3: Enterprise Rancheria, Corps of Engineers, DWR Independent Consulting Board, DWR, and the CVFPB have approved the proposed TRLIA embankment redesign for the Native American cultural site located near Star Bend. TRLIA began construction over the cultural site on August 17.
 - Project Element 4:
 - At its July meeting, the CVFPB approved permit No. 18430 which allows levee degradation.
 - Degradation of the existing levee began August 24.
 - All Project Elements: To celebrate completion of the Feather River Setback Levee, TRLIA has scheduled a ribbon cutting ceremony for 10:30 a.m., Monday, October 26. This is a huge milestone that TRLIA looks forward to celebrating.
 - Significant Events, media releases, and media coverage during the Quarter:

- September 20, 2009: Appeal Democrat Article: Yuba land value battle brews (see attachment 1)
- September 8, 2009 Media/Press Release: Levee Construction to begin near confluence of Yuba and Feather Rivers (see attachment 1)
- August 27, 2009: Appeal Democrat Article: Out with the old (levee) in south county (see attachment 1)
- August 23, 2009: Appeal Democrat Article: Who left Yuba levee remains? (see attachment 1)
- July 17, 2009: Appeal Democrat Article: Yuba Indian remains up levee cost (see attachment 1)

● **Engineering and Construction matters:**

➤ **Project Element 1 - Land Acquisition:**

- **Feature 1 (Segment 2/Setback levee):** The Tables below reflect the Real Estate actions accomplished in this Quarter.
 - Listed below are the eminent domain settlements in the 6th Quarter.

<u>Eminent Domain Case</u>	<u>Deposit of Probable Compensation</u>	<u>Settlement</u>	<u>Relocation Expense</u>
APN 016-010-009 (Herold)	\$58,500	\$609,524.47	\$195,000 (included in the settlement amount)
APN 014-370-017 (Heir Trust)	\$1,400	\$18,500	\$0

The Herold eminent domain acquisition was settled during the 6th Quarter. The cultural site design modification in Project Element changed the right-of-way requirements on the Herold's property to needing to acquire the entire Herold parcel and relocating the owner occupant in the summer of 2009. Due to the levee construction urgency of acquiring the property and relocating the property owner, TRLIA initially paid the additional land and relocation costs with local share and is now in the process of requesting the State to pay its share.

The Heir Trust eminent domain litigation was settled at a mandatory settlement conference on September 18, 2009. The parties are in the process of finalizing the settlement documents.

- During mediation the Davits (APN 013-010-014) and TRLIA agreed to a settlement. The Davits agreed to return \$200,000 from the judgment amount of \$3,039,791.26, which they have withdrawn from the State escrow account. In addition, the court has ordered TRLIA to pay the Davit litigation costs of \$134,771.82, which will be deducted from the \$200,000 that is being returned.
- Below is a list of the remaining eminent domain cases and the projected trial date. The parties will exchange updated appraisal information 90 days before trial unless an agreement has been reached to vary that date. The scheduled trial and exchange dates for those cases, and the amount of probable compensation TRLIA deposited with the State based on its pre-condemnation appraisals.
 1. APN 013-010-010, -030, -031, -032, -033, -034, and -035 (Danna II) Trial 10/6/09 Deposit \$1,455,000
 2. APN 014-290-004 (Heir Family) Trial 10/20/09 Exchange 8/25/09 Deposit \$267,000
 3. APN 014-250-029, -030, and -031 (Rice) Trial 11/17/09 Exchange 8/25/09 Deposit \$155,000
 4. APN 020-360-002 (Khang) Trial 12/1/09 Exchange 9/1/09 Deposit 32,500
 5. APN 014-250-027 and 6 others (Naumes) Trial 1/12/10 Exchange 10/12/09 Deposit \$15,580,000
 6. APN 016-010-016 (S. Nieschulz) Trial 2/2/10 Exchange 11/2/09 Deposit \$1,335,000
 7. APN 016-010-006 (L. Nieschulz) Trial 2/25/10 Exchange 11/25/09 Deposit \$17,200
 8. APN 016-060-001 (Foster Bar) Trial 3/16/10 Exchange 12/16/09 Deposit \$100,000
 9. APN 016-010-008 (Foster House) Trial 3/16/10 Exchange 12/16/09 Deposit \$23,000
 10. APN 014-370-029 and 6 others (Foster Ranch) Trial 3/16/10 Exchange 12/16/09 Deposit \$4,830,000
 11. APN 014-370-006 and 039 (Anderson) Trial 5/4/10 Exchange 2/3/10 Deposit \$321,000.

- **Feature 2 (Segment 3):** The Tables below reflect the Real Estate actions accomplished in this Quarter.

- Listed below are the eminent domain settlements in the 6th Quarter.

<u>Eminent Domain Case</u>	<u>Deposit of Probable Compensation</u>	<u>Settlement</u>
None		

➤ **Project Element 2: Feather River Segment 2 setback levee without tie-ins and new levee construction requiring federal action (except as noted in features):**

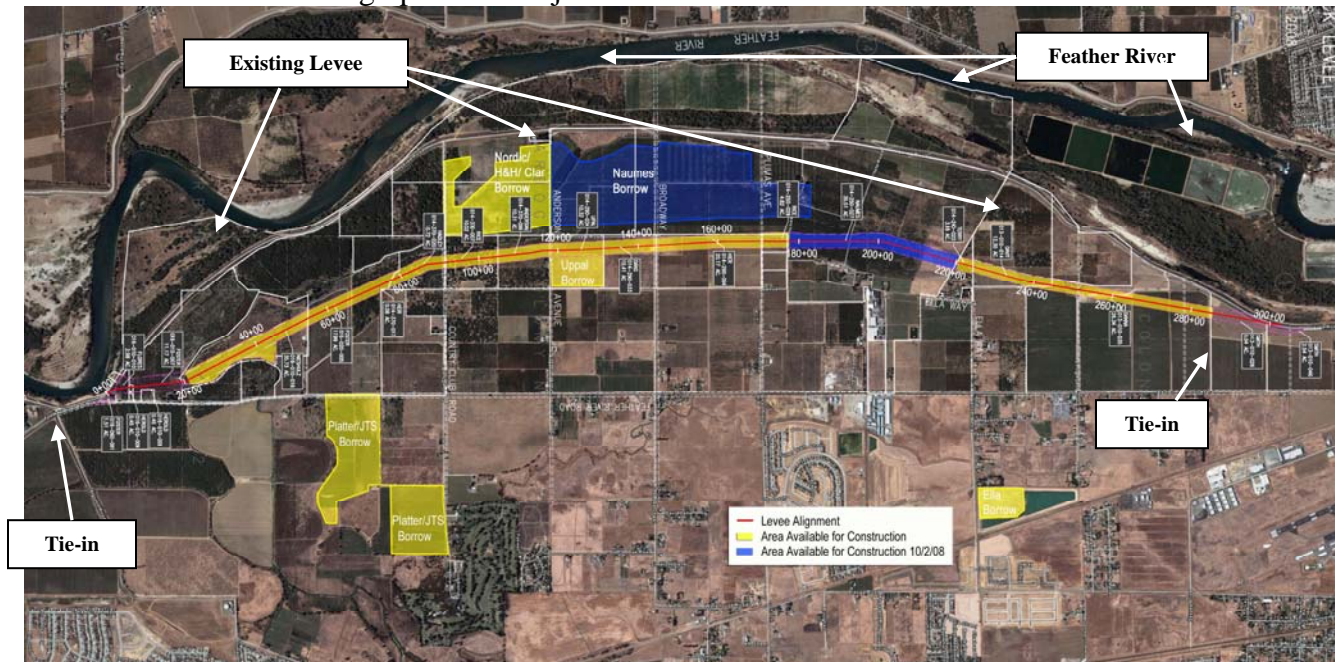
- Construction work continued during this quarter. Table 1 below reflects the progress on Project Element 2 through the 6th Quarter ending September 2009. All construction work anticipated to be done in the 7th Quarter.

Table 1: Project Element 2 Work

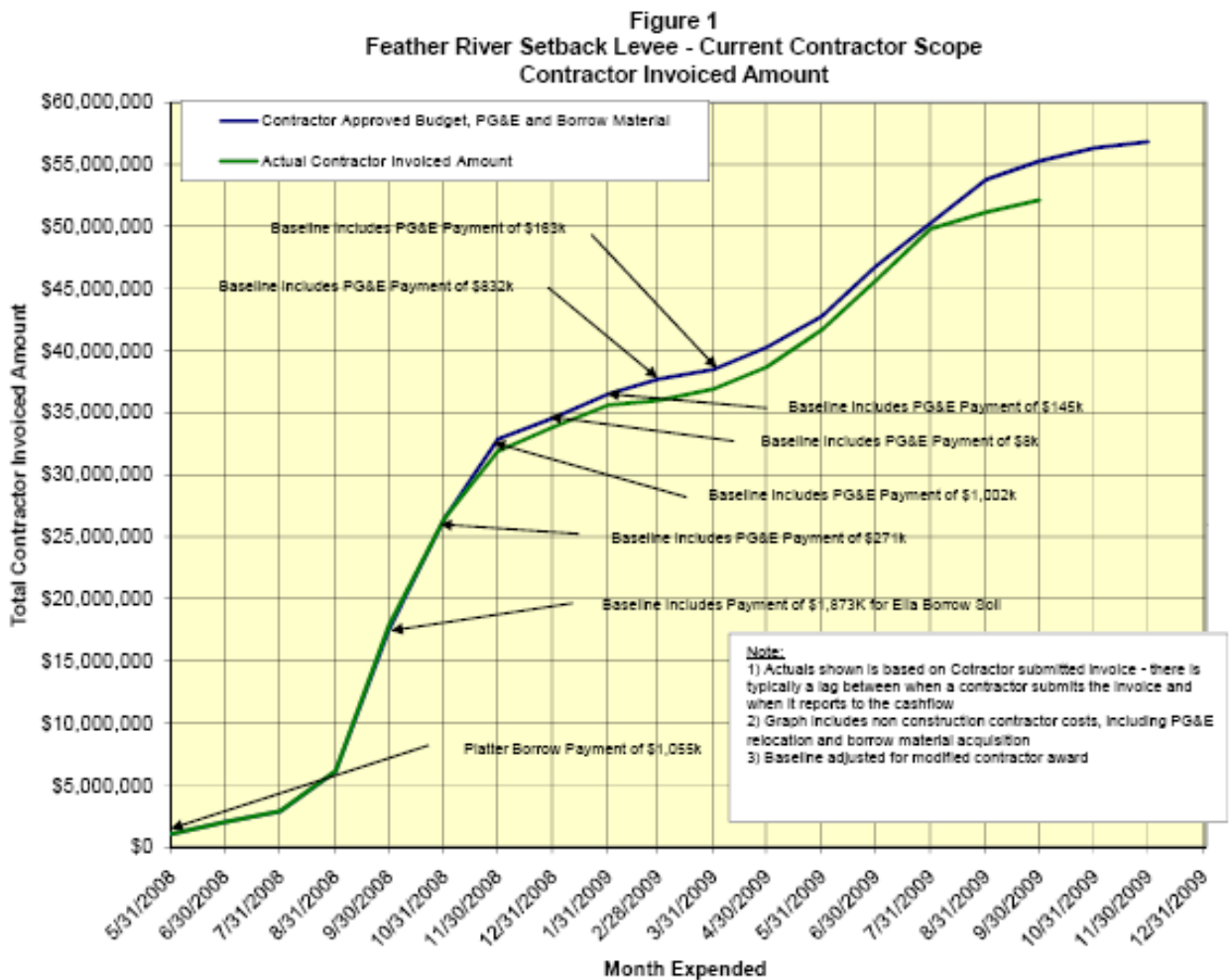
Location	Completed as of 9/30/09			Work to be performed 2009		
	lineal feet of foundation	sf of cutoff wall	cubic yards embankment	lineal feet of foundation	sf of cutoff wall	cubic yards embankment
Element 2	26,430	1,408,200	3,033,000	0	0	1,750,000

- Earth moving operations began in late April and are continuing. The embankment is complete from Station 21+00 to the North Tie-in. Only 100,000 CY (2%) of the embankment remains to be placed as the 6th Quarter can to an end.

- Below is a graphic for Project Element 2.



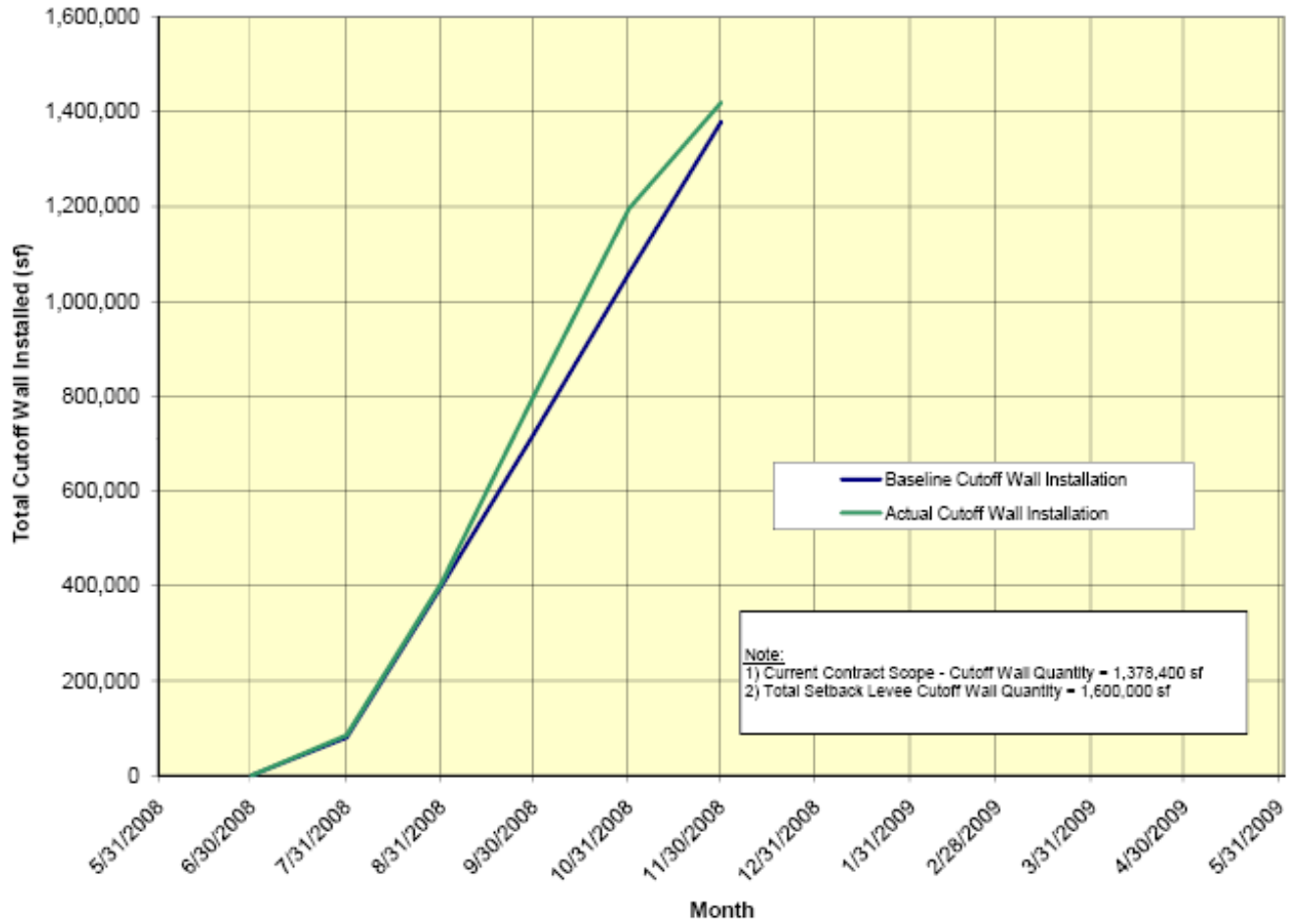
- See Attachment 4 for Construction Photos
- The SMGB Reclamation Plan and Financial Plan have been updated and the TRLIA two offsite borrow sites (Ella and Platter) are fully compliant with SMARA.
- Provided next are three TRLIA metrics that track Modified Schedule B work progress. These metrics are adjusted as work is added to the contract.



Metric – Cost

- As shown on Figure 1, the actual expended costs are somewhat below the baseline projection. The difference is due primarily to a two-week construction shutdown in November due to a significant storm event, PG&E transmission relocation being behind schedule, and delays in relief well installation.

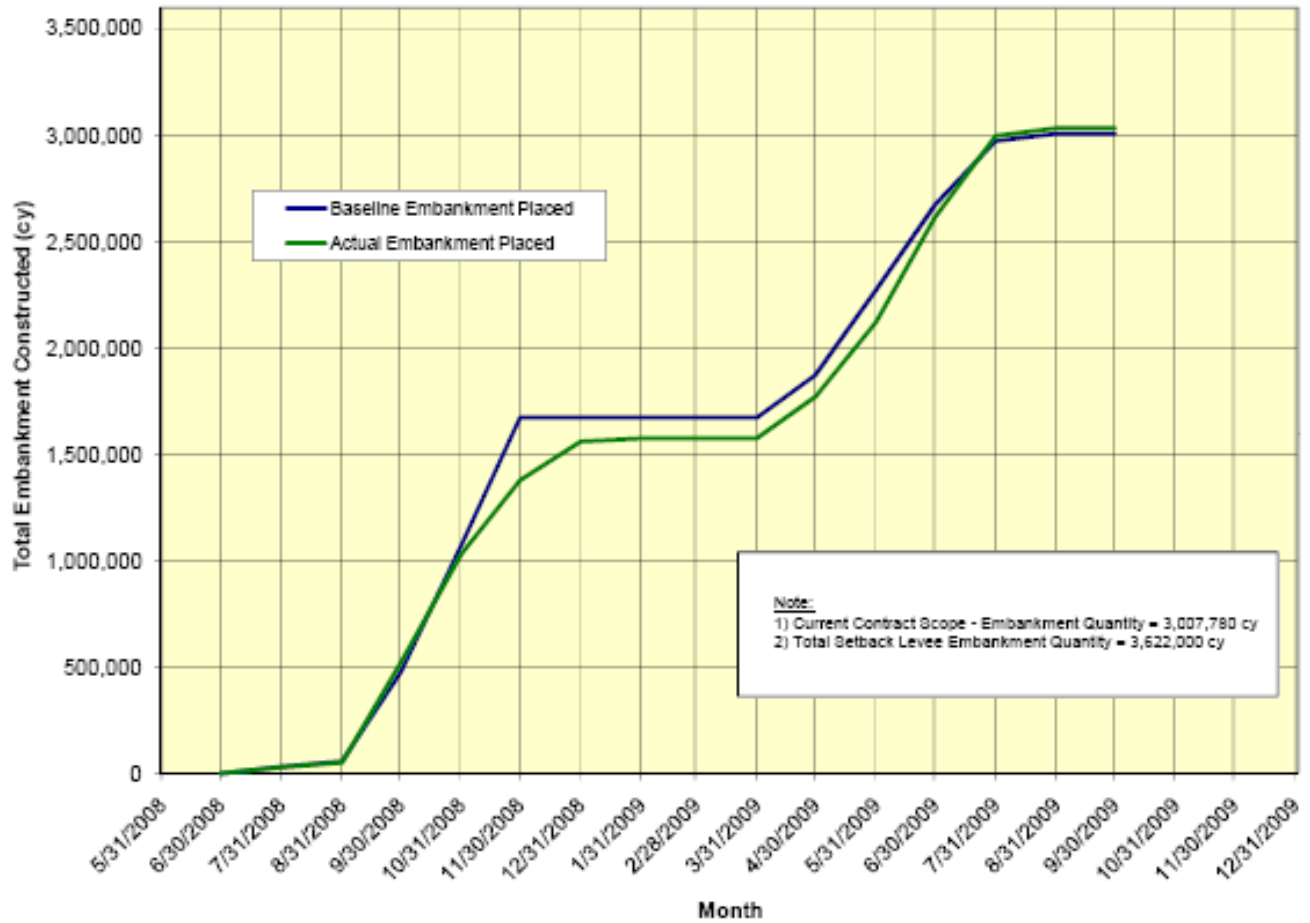
Figure 2
Feather River Setback Levee - Current Contractor Scope
Cutoff Wall Installation



Metric – Cutoff Wall

- As shown on Figure 2, the actual installed cutoff wall is very close to the baseline projection (within 3% of projection). **This metric is complete**

Figure 3
Feather River Setback Levee - Current Contractor Scope
Embankment Construction



Metric – Embankment

As shown on Figure 3, the actual volume of embankment placed is very close to the baseline projection (within 30,000 cy). Final embankment quantity is pending survey of during construction foundation settlement.

- On April 6, TRLIA requested that regulatory design changes be added to this Project Element. The total cost of the request was \$4,900,000. DWR is still processing this request.

➤ **Project Element 3: Feather River Segment 2 tie-ins and new levee construction requiring federal action**

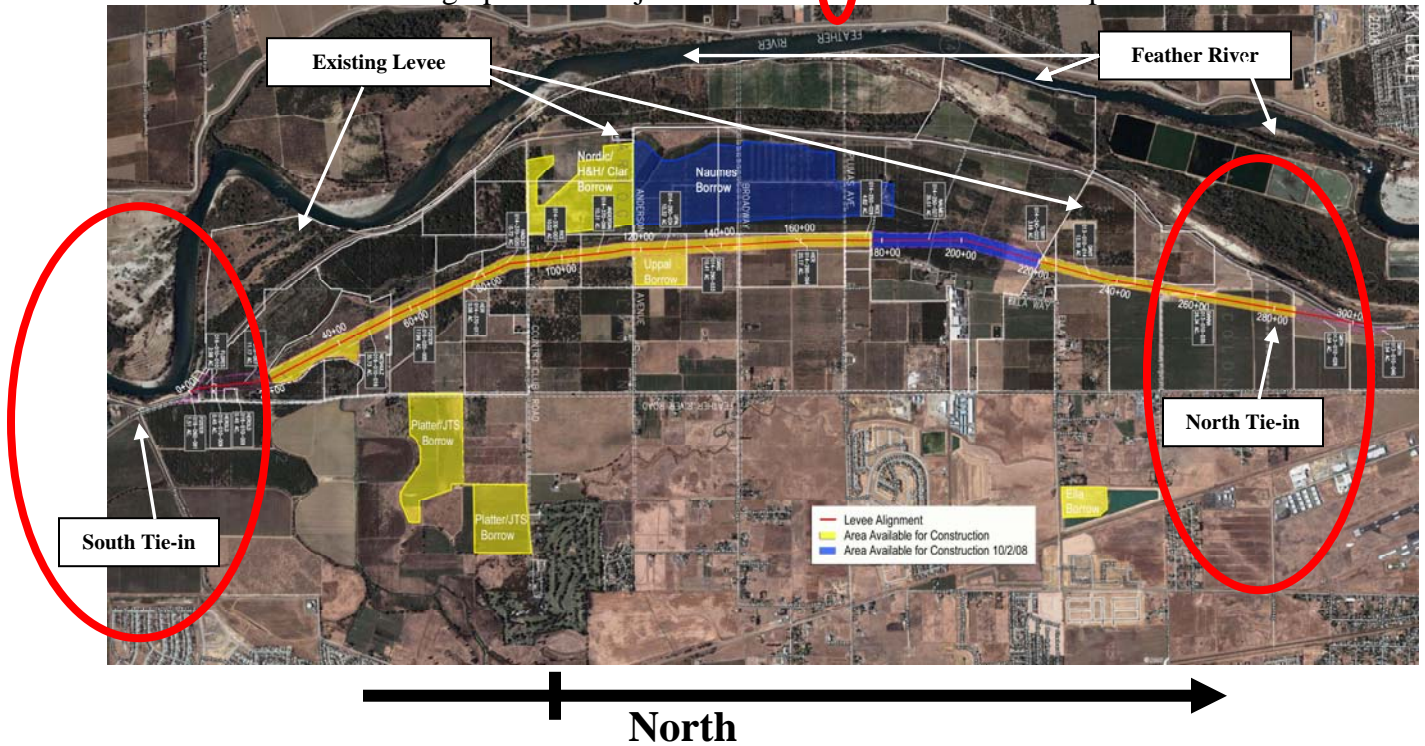
- Enterprise Rancheria, Corps of Engineers, DWR Independent Consulting Board, DWR, and the CVFPB have approved the proposed TRLIA embankment redesign for the Native American cultural site located near Star Bend. TRLIA began construction over the cultural site on August 17th.
- TRLIA received the final 2081 from the Department of Fish and Game.
- Construction work continued throughout the Quarter on this Project Element. Table 2 below reflects the progress on Project Element 3 through the 6th Quarter ending September 2009. All Project Element 3 construction work is scheduled to be completed in the 7th Quarter.

Table 2: Project Element 3 Work Schedule

Location	Completed as of 9/30/09			Work to be performed 2009		
	lineal feet of foundation	sf of cutoff wall	cubic yards embankment	lineal feet of foundation	sf of cutoff wall	cubic yards embankment
South tie-in to 21+00	0	150,000	325,000	2,100	150,000	420,000
285+30 to North Tie-in	1,500	100,000	250,000	1,500	100,000	250,000
Total	1,500	250,000	575,000	3,600	250,000	670,000

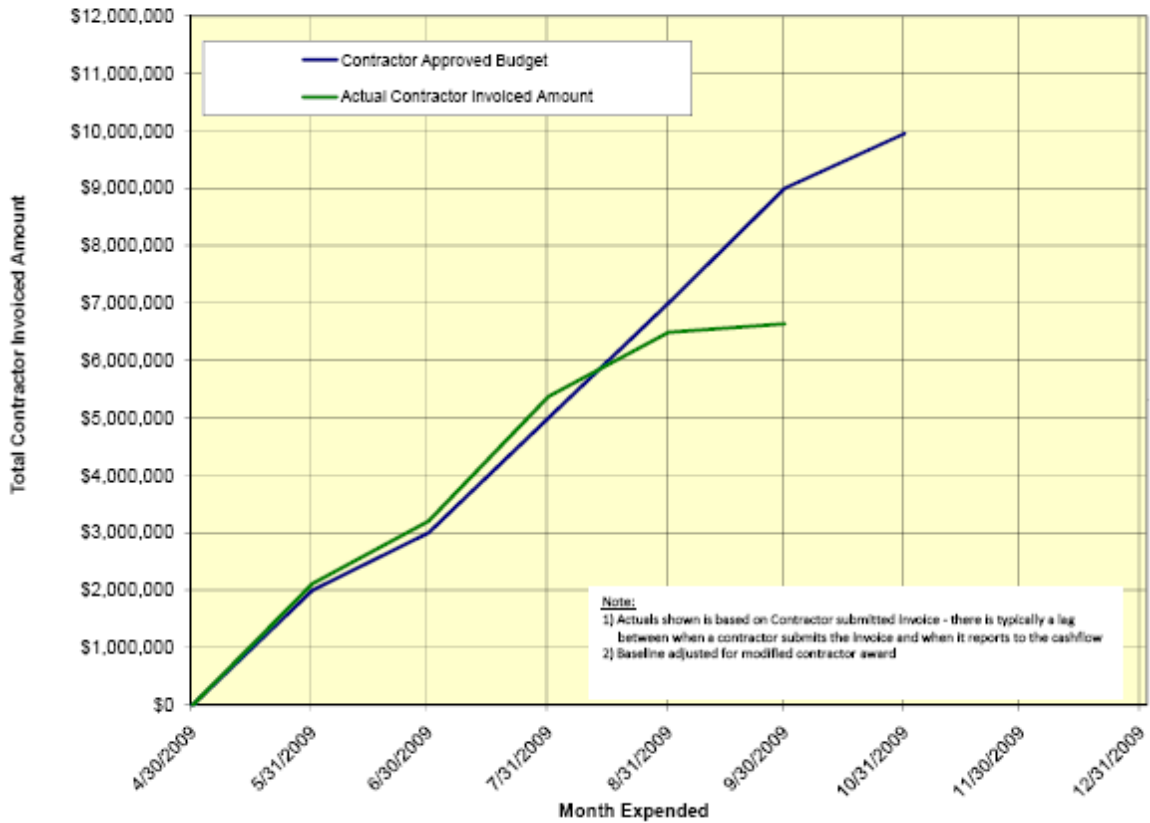
- See Attachment 4 for Construction Photos

○ Below is a graphic for Project Element 3 and construction photos.



○ Provided next are three TRLIA metrics that track Project Element 3 work progress. These metrics are adjusted as work is added to the contract.

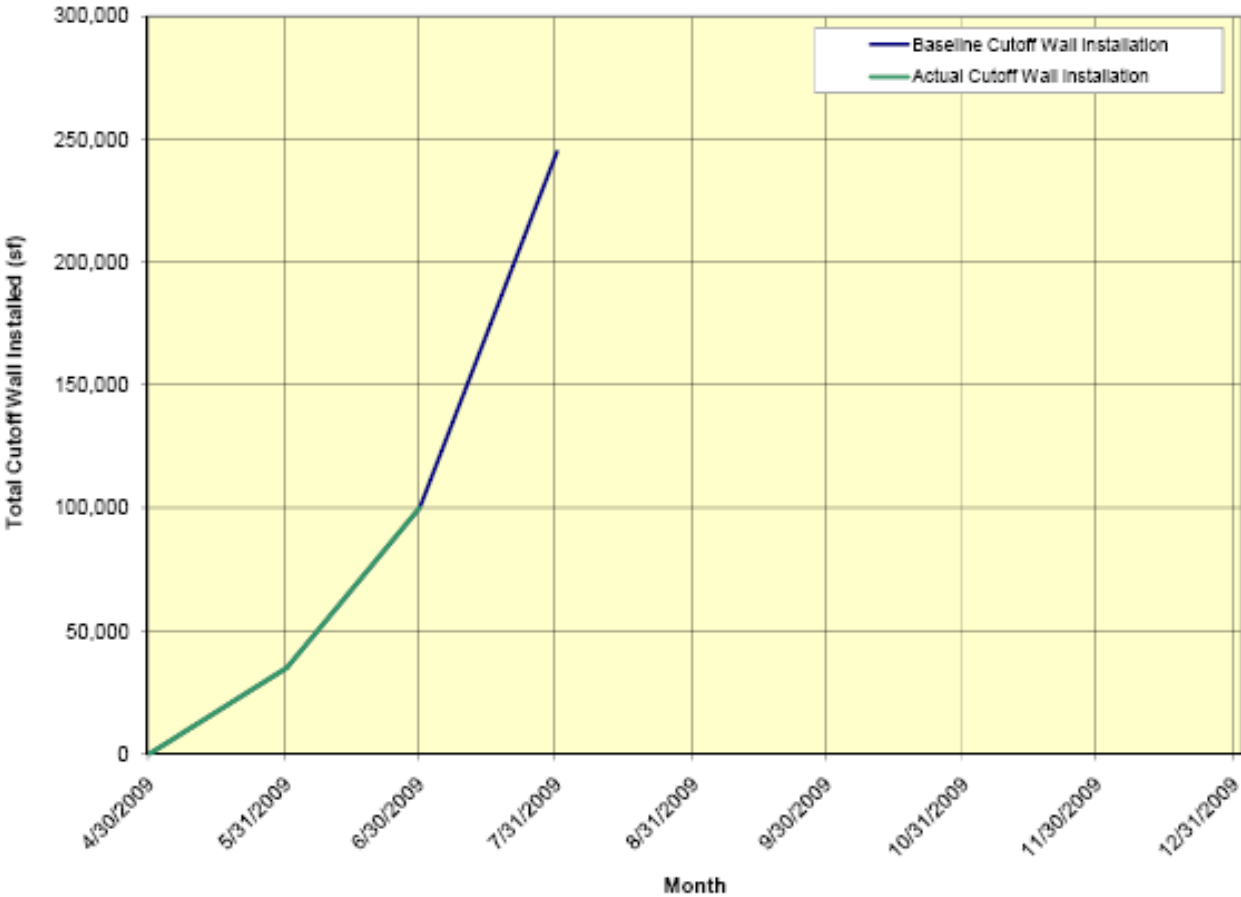
Figure 4
 Feather River Setback Levee - Current Contractor Scope
 Contractor Invoiced Amount



Metric – Cost

- As shown on Figure 4, expenditures for Element began trailing from baseline projections primarily due to delays in receiving approval for the south tie-in re-design at the cultural site, and a delay in contractor invoicing. Construction is expected to be completed next quarter.

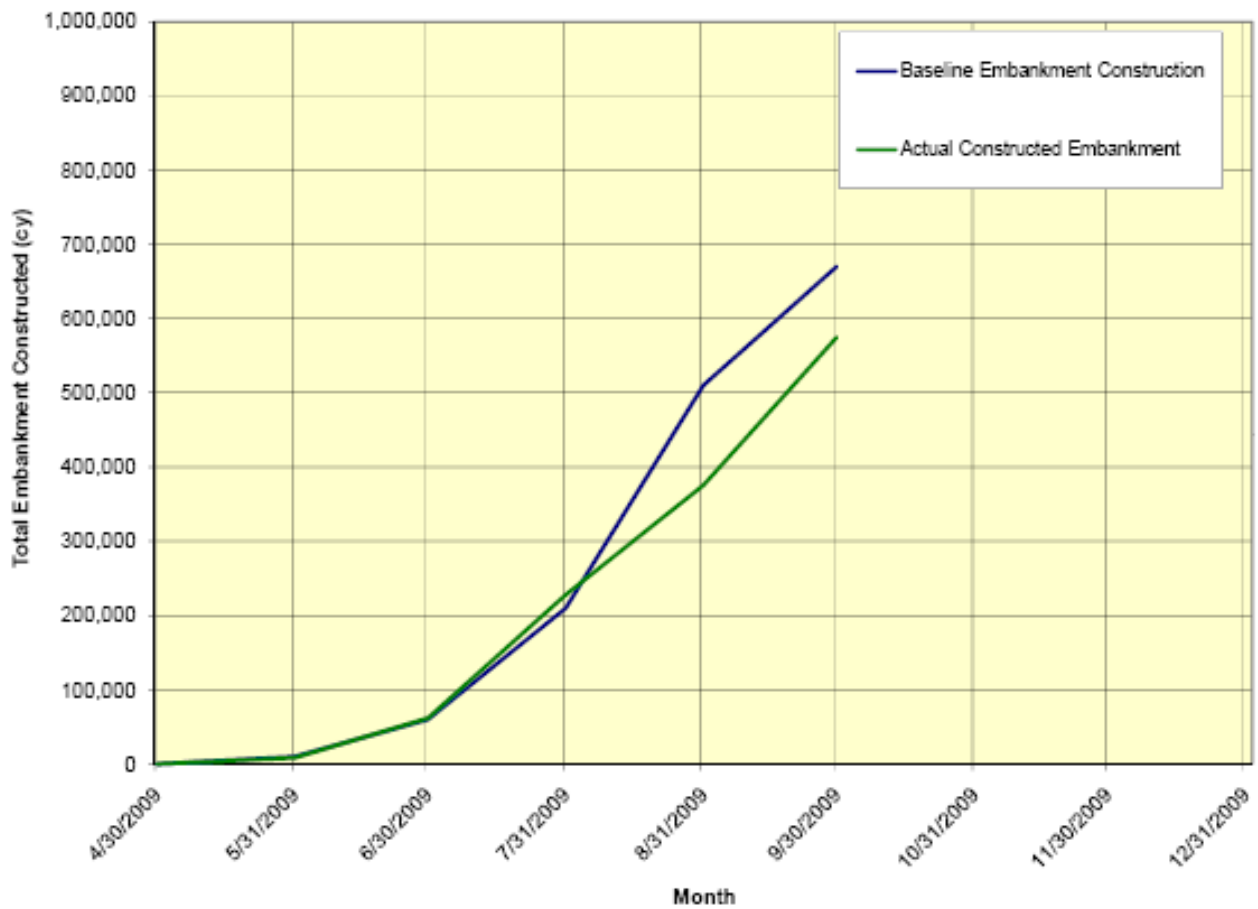
Figure 5
Feather River Setback Levee - Current Contractor Scope
Cutoff Wall Installation



Metric – Cutoff Wall

- As shown on Figure 5, cutoff wall construction was completed in July 2009.

Figure 6
Feather River Setback Levee - Current Contractor Scope
Embankment Construction



Metric – Embankment

- As shown on Figure 6, embankment construction production began trailing off from baseline projections primarily due to delays in receiving approval for the south tie-in re-design at the cultural site. Embankment construction is expected to be completed next quarter.

➤ **Project Element 4: Feather River Segment 2 Existing Levee Degrade**

- At its July meeting, the CVFPB approved permit No. 18430 which allows levee degradation. TRLIA is to submit separate encroachment permit applications to the CVFPB for the Vegetated Wave Buffer and for the Elderberry Mitigation Area.
- TRLIA submitted an encroachment permit application to the CVFPB for the Vegetated Wave Buffer on September 3, 2009.
- The encroachment permit application for the Elderberry Mitigation Area will be submitted once TRLIA, DWR, CVFPB, and F&WS have worked out a safe harbor agreement for elderberry maintenance in the Feather River floodway.
- TRLIA, Corps and CVFPB have agreed to levee degrade requirements.
- Degradation of the existing levee began August 24.

➤ **Project Element 5: Feather River Segment 3 levee improvement:**

- Construction efforts for this Project Element have been completed. TRLIA is in the process of preparing the documentation to close out this element.
- TRLIA requested DWR to include erosion protection at the confluence of the Feather and Yuba Levees in Segment 3 work. This erosion protection was identified as necessary by the Corps of Engineers and required before this reach of levee could be certified. DWR has approved this work as part of the Feather River EIP Agreement. This work is being reported on as Project Element 5A.
- Below are two TRLIA metrics that reflect major components of the Project Element 5 (Segment 3) work:

Figure 4
Feather River Levee Repair Project - Segment 3
Contractor Invoiced Amount

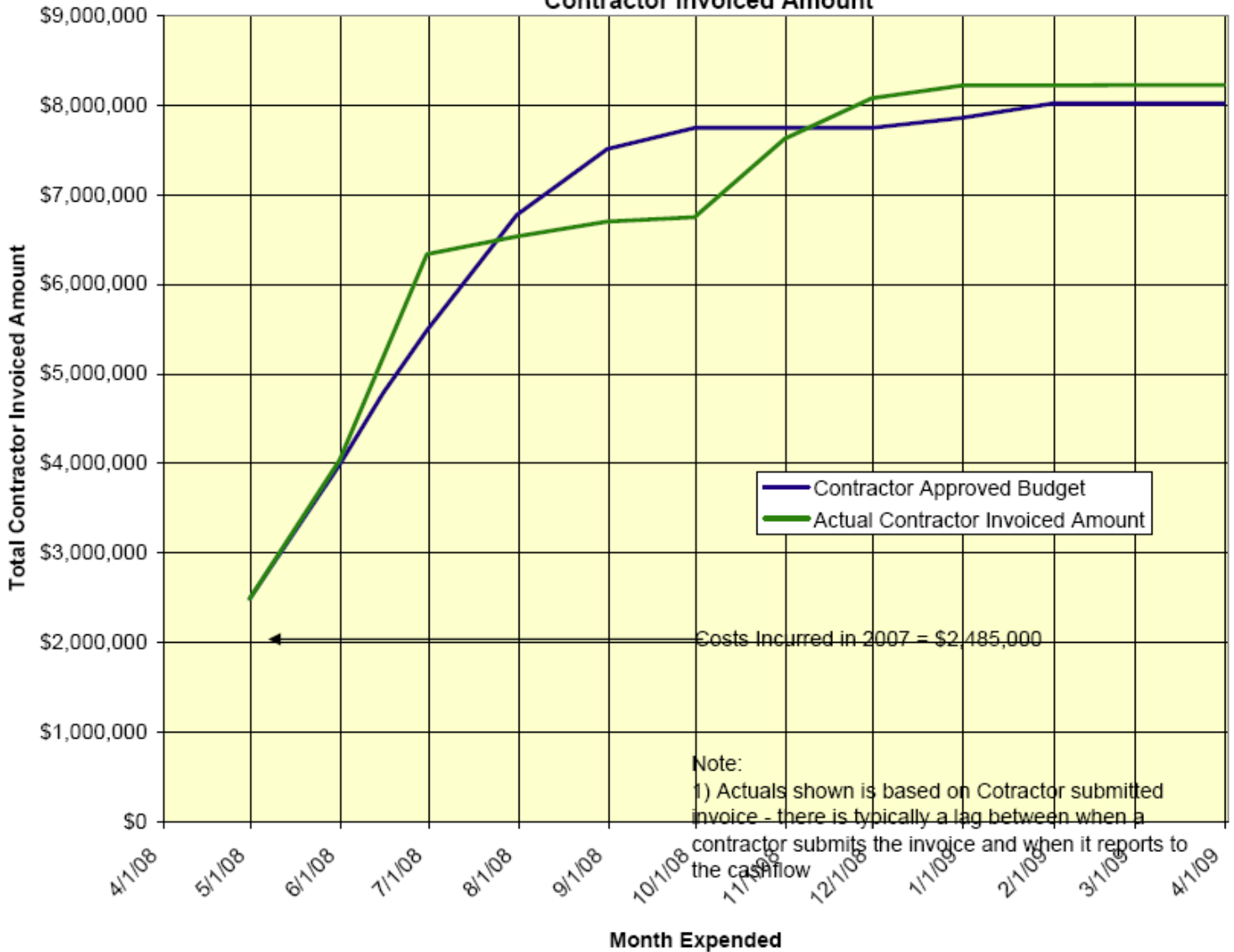
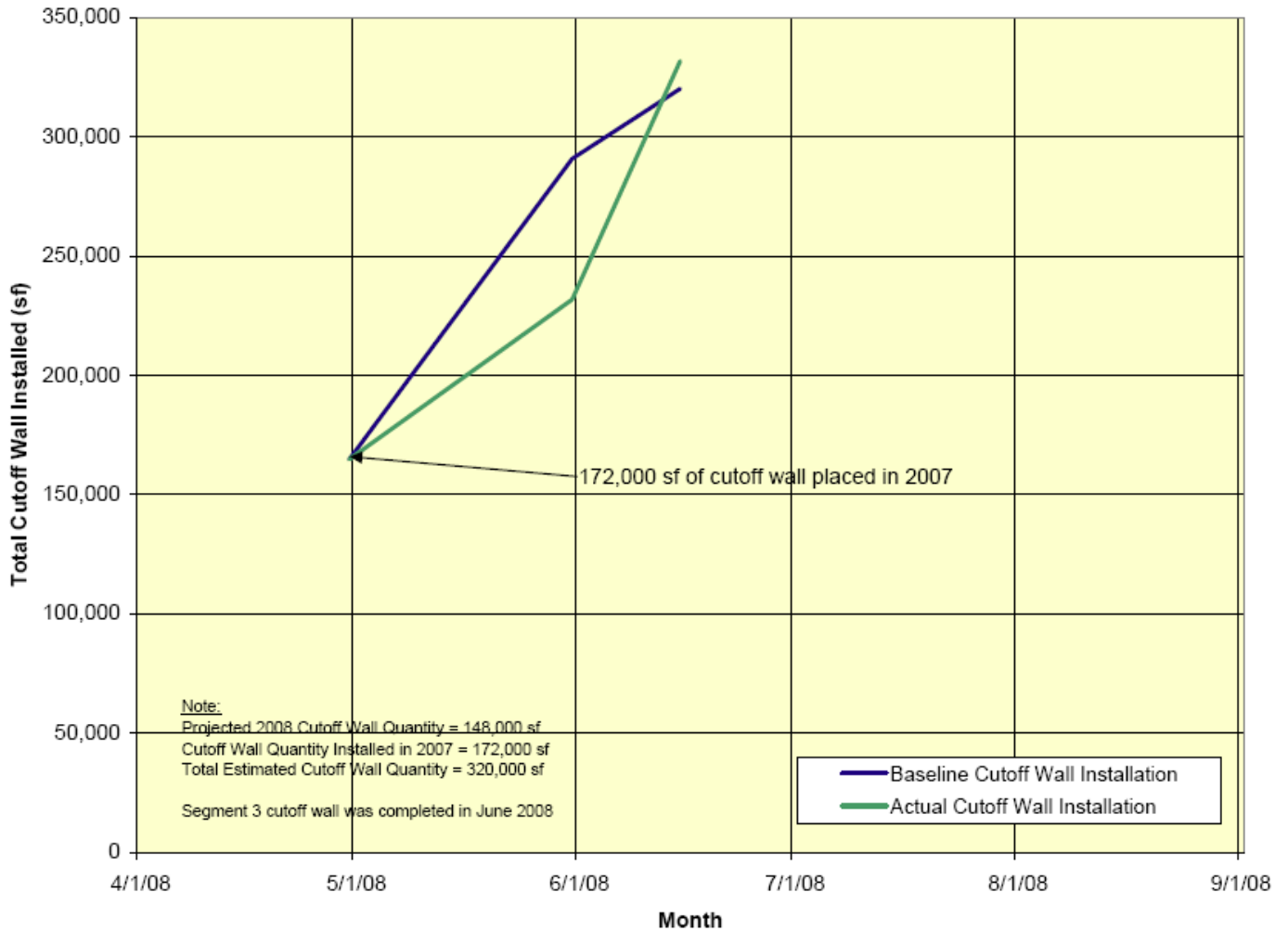


Figure 7

Metric - Cost

- As shown on Figure 7, the actual invoiced amount is slightly greater than the baseline projection, primarily due to a slightly increased cutoff wall length (see discussion with next Figure).

Figure 8
Feather River Levee Repair Project - Segment 3
Cutoff Wall Installation



Metric – Cut off Wall

- As shown on figure 8: Cutoff wall work was completed during the 2nd quarter. A 331,600 square foot (s.f.) soil cement bentonite (SCB) cutoff wall was installed compared to the bid quantity of 320,000 s.f. This increase is primarily due to: 1) overlap with the 2007 work; and 2) the increased cutoff wall depth in the 2008 work to address Corps concerns about SCB wall performance experienced on other projects.

- Below is the status of the Project Element Deliverables:
 - Design Report: submitted March 28, 2007
 - Design Drawings and Specifications used for construction: submitted August 22, 2007
 - Permits: previously submitted – see permit table for list (Attachment 3)
 - CEQA and NEPA documents: previously submitted see permit table (Attachment 3)
 - O&M manual addendum: Draft submitted for review on April 29, 2009; final anticipated next quarter with the incorporation of the Segment 1 Crack and Segment 3 erosion site repairs.
 - As-built drawings: Submitted June 2009. Supplemental as-builts for the Segment 1 crack and Segment 3 erosion site repairs will be submitted next quarter.

➤ **Element 5A: Feather River Segment 3 Erosion Site 2:**

- The CVFPB issued the revised encroachment permit for this work on September 10, 2009.
- Construction will be implemented in the 7th Quarter.

Table 3: Project Element 5A Work Schedule

Work completed as of 9/30/09	Work to be performed during 7th Quarter (Oct- Dec)
cubic yards rock	cubic yards rock
0	1,800

➤ **Project Element 6: Feather River Land Management:**

- TRLIA has 5 farming leases and 1 pending farming leases in the Feather Setback area. They are listed below:
 - Foster(016-020-005, 014-370-030, 014-370-029, 016-010-002, 016-010-007)
 - Miller (014-370-033)
 - Maxey (014-370-024)
 - Hadley (014-370-020)
 - Davit (013-010-014)
 - Nieschulz (Pending)

- TRLIA did not collect any revenue from the farm leases during this quarter, as the lease rate for the first year of construction was 0%. The leases then increase to 10% of the net profit for years 2 through 5. TRLIA should see revenues from year 2 of the leases in spring 2010.
- TRLIA is nearing completion of an administrative draft final land management plan in cooperation with River Partners and also an interim land operations and maintenance plan. These plans include short-term and long-term operations and maintenance of the borrow sites, onsite mitigation areas, and project elements that include habitat value, such as the floodplain drainage swale and the wind wave reduction buffer waterside of the levee. These plans are anticipated to be ready for review during the 7th Quarter.

➤ **Project Element 7: Project Management, legal support, community relations support, land management support, and overhead**

- Activity occurred this quarter in all Features.

● **Environmental matters**

➤ Project Element 3:

- Enterprise Rancheria, Corps of Engineers, DWR Independent Consulting Board, DWR, and the CVFPB have approved the proposed TRLIA embankment redesign for the Native American cultural site located near Star Bend. TRLIA began construction over the cultural site on August 17th.
- TRLIA received the final 2081 Department of Fish and Game.

➤ Project Elements 1, 2, and 4 through 7: None at this time

● **Status of permits, easements, rights-of-way, and approvals as may be required by other State, federal, and/or local agencies:**

➤ Project Elements 2, 3, 4, 5, and 5A:

- See Attachment 3 for the Permit status update.

➤ Project Elements 2 & 3:

- The SMGB Reclamation Plan and Financial Plan have been updated and the TRLIA two offsite borrow sites (Ella and Platter) are fully compliant with SMARA.
- Project Element 3 & 4:
 - The Corps signed the Feather River Setback Levee Environmental Impact Statement 404 permit Record of Decision on December 8, 2008, and issued the final Feather River Setback 404 permit on December 15, 2008.
 - Incorporated into the 404 permit is the approval of the on-site Wetlands Mitigation Plan.
 - The construction of the onsite Wetlands is pending the completion of the levee degrade (Project Element 4). Wetlands mitigation is anticipated to occur spring 2010.
 - A permit condition is that prior to construction, TRLIA needs to provide a construction and performance bond or escrow for the on-site Wetlands project. This was completed in April 2009.
 - A permit condition is that prior to construction, TRLIA needs to provide a fully funded endowment for the on-site Wetlands project. This was completed in April 2009.
 - The CVFPB approved permit No. 18430 which allows levee degradation at the July Meeting. TRLIA is to submit separate encroachment permit applications to the CVFPB for the Vegetated Wave Buffer and for the Elderberry Mitigation Area.
 - TRLIA submitted an encroachment permit application to the CVFPB for the Vegetated Wave Buffer on September 3, 2009.
 - The encroachment permit application for the Elderberry Mitigation Area will be submitted once TRLIA, DWR, CVFPB, and F&WS have worked out a safe harbor agreement for elderberry maintenance in the Feather River floodway.
 - TRLIA received the final 2081 Department of Fish and Game
- Project Element 5A:
 - The CVFPB issued the revised encroachment permit for this work on September 10, 2009.
- Elements 6 and 7: Not applicable

- **Issues/concerns that have, will, or could affect the schedule or budget, with a recommendation on how to correct the matter:**
 - Issue 1: Timely State funding advances continue to be a problem, which forces local funds to be used to pay the State share of expenses. This places a hardship on the local community and also could force construction delays due to the local funds not being sufficient to cover the State share.

Recommended Resolution: DWR needs to improve the State funding process to provide funds in a timely manner.

- **Describe differences between the work to be performed and the work outlined in the Overall Work Plan, including anticipated change orders:**
 - Project Element 3: A Native American cultural site was discovered near Star Bend, which is located under the levee footprint of the planned. This discovery has caused additional design work, regulatory coordination, and construction costs to mitigate for the project impacts on the cultural site. A change order to address the modified design was approved in August 2009
 - Project Element 3: Construction delays and modified sequencing have resulted due to delays in obtaining the DFG 2081 permit. These delays required a change order in August 2009.
 - Project Element 3: A portion of Segment 2 setback levee cutoff wall that was originally intended to be constructed by the Segment 1 construction contractor was instead added to the Segment 2 contract. A change order to address the increased cutoff wall length was approved in August 2009.

- **Demonstrate financial ability to pay local cost share of Eligible Project Costs required to complete the Project:**
 - All local funding agreements have been executed. Local funding was provided in a timely manner during the Quarter to support all applicable Project Elements.
 - On July 22, 2008, YCWA and Yuba County formed the Yuba Levee Finance Authority (YLFA) as the entity to effectuate the borrowing contemplated in the local funding agreement. On September 23, 2008, the YLFA closed on bonds sales to yield \$46.6 million in proceeds. To date, the YLFA Board has authorized for draw down by TRLIA \$34,656,000 of the \$46,600,000 in local funding for the project. As of the end of September TRLIA has drawn down only \$24,698,201.

- **Legal Matters:** No issues for all Project Elements
- **Cost Information by Project Element:** This information is provided in Appendix I at end of this Quarterly Progress Report.

- **A discussion on how the projected schedule compares to the original or last reported schedule:**
 - Project Element 5, Feature 4: Additional time was added for completion of the O&M manual.
 - Project Element 5A, Features 1 to 4: This Project Element was added to the schedule.

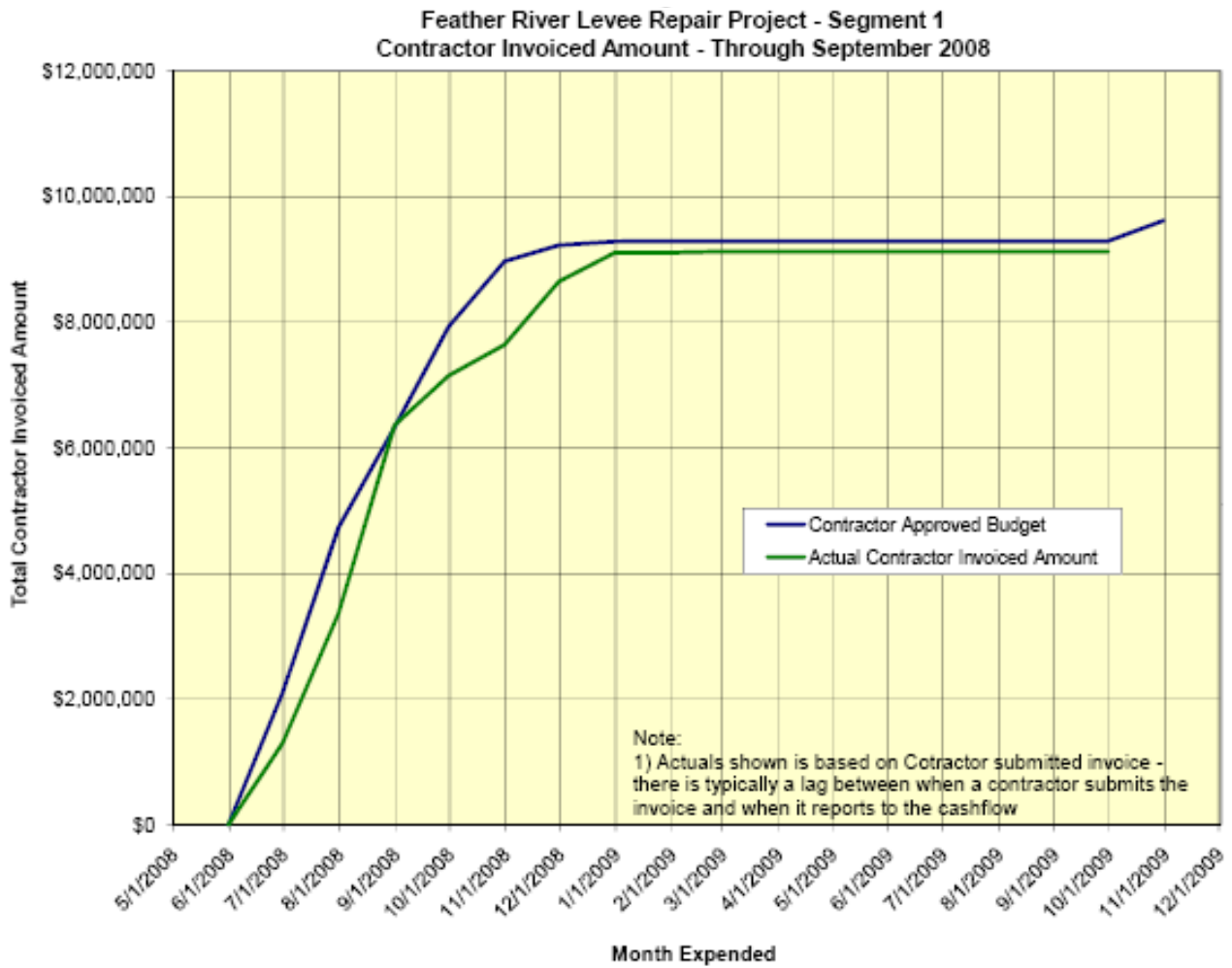
Associated Project Element Improvements

1. Specific Associated Project Element Information:

- **Major accomplishments planned for the quarter (i.e. tasks completed, milestones met, meetings held or attended, press releases, etc.);**
 - Agreement was reached with Corps, DWR, and CVFPB on how to repair the levee crack near Star Bend. The repair work began and is scheduled to be completed in October.

- **Engineering and construction matters:**
 - Associated Project Element 1: No items to report.
 - Associated Project Element 2 (Segment 1): Agreement was reached with Corps, DWR, and CVFPB on how to repair the levee crack near Star Bend. The repair work began and is scheduled to be completed in October.
 - Associated Project Element 1 and 2: On August 18, 2008, TRLIA requested DWR reconsider the decision to not provide State funding for this Associated Project Element. DWR is still considering this request.
 - Associated Project Element 2: Following are two TRLIA metrics that reflect major components of the Segment 1 work:

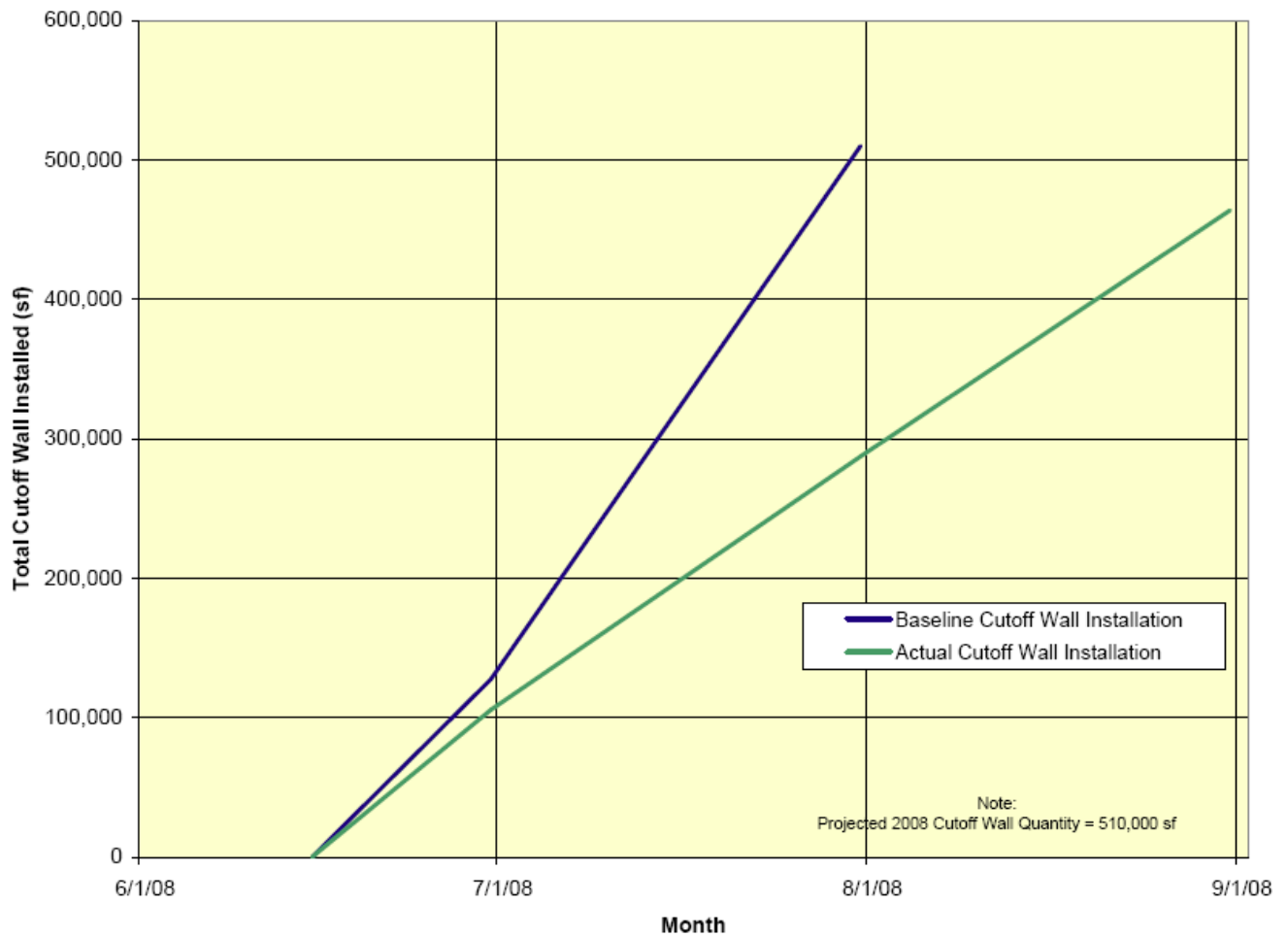
Figure 9



Metric - Cost

- The metric shows the project expensing has incorporated repairs to the Segment 1 crack, which will not be invoiced until next quarter. It takes approximately 30 to 45 days for contractor invoices to be processed and paid.

Figure 10
Feather River Levee Repair Project - Segment 1
Cutoff Wall Installation



Metric

- The soil-bentonite cutoff wall work was completed by September 1 at a reduced quantity. 176,035 s.f. of cutoff wall was installed, compared to the bid quantity of 220,000 s.f. (reduction of 43,965 s.f.). This reduction is due primarily to removal of the cutoff wall between Station 246 and 249 from the contract. Work on this section of cutoff wall will be included with project Element 3 in 2009. Also, the bid quantity included accounted for the possible need to go deeper in some areas to get an adequate key - during construction it was found that the depth shown on the drawings was adequate.

- Below is the status of the Associated Project Element Deliverables:
 - Design Report: submitted March 28, 2007
 - Design Drawings and Specifications used for construction: submitted August 22, 2007
 - Permits: previously submitted – see permit table for list
 - CEQA and NEPA documents: previously submitted see permit table (Attachment 5)
 - O&M manual addendum: Draft submitted for review on April 29, 2009; final anticipated next quarter with the incorporation of the Segment 1 Crack and Segment 3 erosion site repairs.
 - As-built drawings: Submitted June 2009. Supplemental as-builts for the Segment 1 crack and Segment 3 erosion site repairs will be submitted next quarter.

- **Environmental matters**

- None

- **Status of permits, easements, rights-of-way, and approvals as may be required by other State, federal, and/or local agencies**

- See Attachment 6 for Permit Update

- **Legal Matters:**

- None at this time

- **Issues/concerns that have, will, or could affect the schedule or budget, with a recommendation on how to correct the matter:**

None at this time

- **Describe differences between the work to be performed and the work outlined in the Overall Work Plan, including anticipated change orders:**

- Added Associated Project Element 9A to the schedule for the Segment 1 crack work.
- The following design changes were incorporated into the construction activities since the last quarterly Progress Report:
 - Repairs to the Segment 1 crack.

- **Demonstrate financial ability to pay local cost share of Associated Project Costs required to complete the Project:**

- All local financial agreements have been executed and local funding was provided to support this Associated Project Element.
- On July 22, 2008, YCWA and Yuba County formed the Yuba Levee Finance Authority (YLFA) as an entity to effectuate the borrowing contemplated in the local funding agreement. On September 23, 2008, the YLFA closed on bonds sales to yield \$46.6 million in proceeds. To date, the YLFA Board has authorized for draw down by TRLIA \$34,656,000 of the \$46,600,000 in local funding for the project. As of September 30, TRLIA has drawn down only \$24,698,201 leaving \$9,957,799 of authorization to pay the local share of expenses.

2. **Cost Information by Associated Project Element:** This information is provided in Appendix I at end of the Quarterly Progress Report.

Attachments

1. Media Items:

- September 20, 2009: Appeal Democrat Article: Yuba land value battle brews (see attachment 1)
- September 8, 2009 Media/Press Release: Levee Construction to begin near confluence of Yuba and Feather Rivers (see attachment 1)
- August 27, 2009: Appeal Democrat Article: Out with the old (levee) in south county (see attachment 1)
- August 23, 2009: Appeal Democrat Article: Who left Yuba levee remains? (see attachment 1)
- July 17, 2009: Appeal Democrat Article: Yuba Indian remains up levee cost (see attachment 1)

2. Permit Status Update for Project Element 2, 3, 4, 5, and 5A

3. Permit Status Update for Associated Project Element

4. Construction Photos

Appendices

Appendix I: TRLIA Feather River Levee Improvement Project Sixth Quarterly Progress Report Budget Information; EPS #16497-6; November 16, 2009

Attachment 1- Media Items

- September 20, 2009: Appeal Democrat Article: Yuba land value battle brews (see attachment 1)
- September 8, 2009 Media/Press Release: Levee Construction to begin near confluence of Yuba and Feather Rivers (see attachment 1)
- August 27, 2009: Appeal Democrat Article: Out with the old (levee) in south county (see attachment 1)
- August 23, 2009: Appeal Democrat Article: Who left Yuba levee remains? (see attachment 1)
- July 17, 2009: Appeal Democrat Article: Yuba Indian remains up levee cost (see attachment 1)

September 20, 2009: Appeal Democrat Article: Yuba land value battle brews

By Ryan McCarthy/Appeal-Democrat

2009-09-20 00:12:18

Property owners say their Yuba County land is worth nearly twice what a public agency would pay them in an eminent domain legal action involving levee improvements for a flood control project. Kummel and Baldev Heir along with Sarinder Thiara take issue with the appraisal presented by the Three Rivers Levee Improvement Authority for 22 acres of peach and prune orchards off Feather River Boulevard between Broadway and Plumas roads.

The attorney for Three Rivers said its appraiser concluded that land should be valued at \$15,000 an acre and \$333,000 for the property.

Attorney Scott McElhern, in the filing earlier this month in Yuba County Superior Court, said the appraiser for the property owners concluded the land is worth "an astounding" \$28,000 per acre and a total value of \$620,000. Three Rivers said the project will replace a very weak levee next to the river channel with a modern levee.

An Oct. 20 trial is scheduled in the land dispute. Three Rivers Executive Director Paul Brunner could not be reached for comment Friday.

A separate legal dispute over land value led to a December 2008 trial and a Yuba County Superior Court jury decision that peach and walnut orchards in Olivehurst were worth \$1 million more than the improvement authority paid when acquiring the land by eminent domain. The authority paid \$1.8 million for the 99 acres along Ella Avenue. Jurors decided the property's value was \$2.8 million.

Contact Appeal-Democrat reporter Ryan McCarthy at 749-4707 or rmccarthy@appealdemocrat.com.

September 8, 2009 Media/Press Release: Levee Construction to begin near confluence of Yuba and Feather Rivers



THREE RIVERS LEVEE IMPROVEMENT AUTHORITY

1114 Yuba Street, Suite 218
Marysville, CA 95901
Office (530) 749-7841 Fax (530) 749-6990

FOR IMMEDIATE RELEASE
September 8, 2009

CONTACT: Kim Floyd
(916) 838-2666

Levee Construction to begin near confluence of Yuba and Feather Rivers

Residents asked to be on alert for increased traffic along Riverside Avenue, Levee

WHAT: Construction crews are beginning work on the Feather River Erosion Site 2 Repair Project, located on the east Feather River Levee near the confluence of the Yuba and Feather Rivers. Riverside Avenue will provide construction access to the levee. Traffic controls will not be needed, but property owners are encouraged to watch for construction crews and equipment.

In general, construction activities at the project site will involve the use of large earthmoving equipment and the trucking of materials into the site. Construction crews will make every effort to minimize noise levels from on-site construction equipment. Short-term noise levels should be lower than the maximum allowed by the County.

WHEN: Monday through Friday, from 7 a.m. to 7 p.m., starting the week of September 7. Work is expected to be completed by October 2009.

WHY: Construction crews continue the hard work of improving 29 miles of levees in South Yuba County. A subset of the larger levee improvement program, the Feather River Erosion Site 2 Repair Project involves the construction of a rock slope protection layer and toe trench, re-vegetation of the levee slopes, and re-grading and resurfacing of an existing maintenance road along the levee toe.

CONTACT: Questions and concerns can be addressed by calling the project hotline at (530) 301-2733. To view weekly construction updates and find more information, visit the project Web site at www.trlia.org.

###

The Three Rivers Levee Improvement Authority, a joint powers agency, was established in May 2004 by the County of Yuba and Reclamation District 784 to finance and construct levee improvements in south Yuba County. Four work phases have been identified with the goal of achieving 200-year flood protection. www.trlia.org

August 27, 2009: Appeal Democrat Article: Out with the old (levee) in south county

Out with the old (levee) in south county

[By Ben van der Meer/Appeal-Democrat](#)
2009-08-27 12:58:02

An infamous landmark in south Yuba County's history entered its final days today, as the Three Rivers Levee Improvement Authority kicked off a campaign to tear down the old levee along the Feather River.

Actually, that process began a few days ago, but the authority's board of directors symbolically started the levee degradation with a ceremony this morning where longtime south county residents turned a shovel or two of levee dirt.

"This levee has a 1 in 20 chance of breaking," said Yuba County Supervisor and TRRIA board member Mary Jane Griego at the ceremony. She gestured to the east, where TRRIA is building a new levee set to be finished by late October. "The new one has a 1 in 200 chance of breaking."

County residents and officials turned shovels just a few miles from where the old levee broke in 1997, killing three people and causing \$300 million worth of damage when adjusted for inflation.

TRRIA executive director Paul Brunner said from an engineering standpoint, the old levee wasn't up to the task of protecting hundreds of new residents in south Yuba County in communities such as Phumas Lake.

"This one was built out of sand, and built on top of sand, so it doesn't have the structural strength," he said.

The new levee, part of a \$167 million construction project, is built out of dirt and on firmer ground. It is also both taller and wider than the old levee.

The new levee also is set back up to a half-mile east of the existing one, giving water a wider berth to flow down the Feather River without affecting homes or businesses, or creating pressure that could result in a rupture.

For shovel bearers Walt Whitenton, 77, and Duke Griego, 73, there is no sentimentality for the end of a levee that's protected south Yuba County — with a notable exception — for decades.

"This part is fantastic," said Whitenton, a West Linda resident who's lived in Yuba County for 45 years. "I'd love to see them do more like this up in the Goldfields, but we've got to get this done first."

Duke Griego, who's lived for 43 years on Arboga Road and had to evacuate in 1997, said his looks at the new setback levee fill him with optimism that the region will avoid future floods.

"I'm sure it will, unless we have a really hellacious storm," he said. "I don't want to be here then."

The old levee won't be entirely degraded at once, Brunner said, because it can't be fully removed until the new levee is more than halfway completed.

Both benchmarks are in line to happen by the end of the typical construction season in late October, when TRLIA officials are planning a dedication ceremony for the new levee.

Crews will use dirt from the degraded levee to fill in holes left from excavations of dirt used to build the new levee, Brunner said.

Eventually, the area between the setback levee and the river will become a designated overflow area during high-water season, and possibly a recreation area for the region at other times of the year.

Contact Appeal-Democrat reporter Ben van der Meer at 749-4709 or bvandermeer@appealdemocrat.com.

August 23, 2009: Appeal Democrat Article: Who left Yuba levee remains?

Who left Yuba Levee Remains?

By [Ben van der Meer](#)/Appeal-Democrat

2009-08-23 00:07:16

The discovery of American Indian artifacts at the site of levee work in south Yuba County has sparked a dispute between Enterprise Rancheria and another tribe opposing its casino project. Oroville-based Mooretown Rancheria sent a letter to the Three Rivers Levee Improvement Authority earlier this month questioning why the authority had contacted Enterprise for proper treatment of the artifacts after crews discovered them last October. "Did the experts approach Mechoopda, Berry Creek, and Mooretown, who also have lands in federal trust in Butte County, to determine to which of the Butte County tribes the remains should be rightfully entrusted?" stated the letter, written by tribal chairman Gary Archuleta. "What criteria established that the remains you found were not from Berry Creek or Mechoopda?"

Archuleta's letter later suggests the authority approached Enterprise Rancheria because Yuba County stands to benefit if the tribe gets federal and state approval to build a casino and hotel near Sleep Train Amphitheater in south Yuba County. TRLIA's board includes two county supervisors, Mary Jane Griego and John Nicoletti. Enterprise Rancheria hopes to receive approval for its casino this year, though the project was first proposed in 2002 and was supposed to have been resolved within two years. Mooretown Rancheria opposes the project. "It calls into question the entire process if you indeed rely upon 'experts' from the Enterprise Rancheria in your efforts to comply with laws that require the consultation of Indian tribes in regards to disturbed sacred sites," Archuleta wrote.

But TRLIA didn't make the call to involve Enterprise Rancheria, according to a response letter from authority executive director Paul Brunner. That directive came from the California Native American Heritage Commission, which handled the inquiry from TRLIA on who to deal with over the artifacts. State and federal law requires proper treatment of such sites. The commission determined Enterprise Rancheria was the most likely descendent for the human remains and artifacts found at the site, which is in an undisclosed location because of sensitivity to possible looters or other disturbances.

Brunner said Thursday the commission's decision had nothing to do with a casino proposal or how it would benefit the county. TRLIA and Enterprise Rancheria officials agreed to have the artifacts reburied before the authority builds a new levee on top of it. Brunner said the levee work has been started.

"I think it's pretty clear by the record that we have done all the procedures we had to do," Brunner said, adding he hasn't heard from Mooretown Rancheria since he sent the response letter last week. "The (Native American Heritage Commission) made their determination, and we're following that determination."

Archuleta did not return a call for comment.

Glenda Nelson, Enterprise Rancheria's tribal chair, said her tribal members have responded to requests for assistance with cultural sites on several occasions. "We know where our aboriginal lands are," she said. "As far as our ancestors go, we were taking care of them long before any of these other issues came up."

She said it seemed obvious Mooretown Rancheria sent the letter because it opposes her tribe's possible casino. Mooretown Rancheria operates the Feather Falls Casino near Oroville. Archuleta has said he opposes Enterprise Rancheria's efforts to build a casino because they constitute "reservation shopping," or finding a place to build a casino off reservation land before trying to get approval for one.

Contact Appeal-Democrat reporter Ben van der Meer at 749-4709 or bvandermeer@appealdemocrat.com.

July 17, 2009: Appeal Democrat Article: Yuba Indian remains up levee cost

By Ben van der Meer/Appeal-Democrat

2009-07-14 00:15:56

The discovery of American Indian artifacts along the Feather River could add more than \$1 million to the cost of building new levees to protect south Yuba County homes and businesses.

Three Rivers Levee Improvement Authority directors will discuss the cultural site at a special meeting today, and could approve a contract amendment for about \$453,000 with a consulting group, related to work done at the site. Authority Executive Director Paul Brunner said discussions about the site began after a crew pulling up a walnut tree near the river last December discovered artifacts in the roots that included shells, beads and human remains. Brunner said experts determined the artifacts likely came from ancestors of Enterprise

Rancheria tribal members, whose predecessors frequently established small settlements along waterways like the Feather.

He would not identify the site's location, citing concerns over possible thieves or vandals disturbing it.

Ren Reynolds, an EPA planner with Enterprise Rancheria, said authority officials and builders have to be sensitive because such sites represent settlements that go back as far as 1,000 years ago. The site found last year, he said, may have been at one time a village of 50 to 75 tribe members. "It's just an age-old problem, because these sites are all over the place," Reynolds said.

And state and federal law requires a measured response, according to TRLIA.

"There's a federal requirement that we have to do this," Brunner said. "I believe we've found a cost-effective approach to deal with the site."

Levee builders will widen the levee on top of the site and have a levee base on more secure ground than the cultural site itself. That widening will add about \$1 million to the cost of the levee project, Brunner said.

Levee construction is funded through a combination of state and local money, with about 80 percent of the cost coming from the state of California, Brunner said. Reynolds said tribal members will re-bury the remains before the levee is built over them. By doing so, he said, the levee will prevent any future disturbance of the site. Tribes frequently discover looting at such sites because remains and artifacts can bring a steep price on eBay.

"There's a tremendous amount of looting that goes undiscovered," he said, adding the tribe is working with federal officials to protect other sites on the Feather and Bear rivers. Though this site was previously unknown, TRLIA has encountered and dealt with such sites in the past, Brunner said. Crews working on the Sutter County side of the Feather have also encountered such a site, he added. "This is not necessarily uncommon," he said. TRLIA board member Don L. Graham said he hadn't encountered such a situation before, either on the authority's board or as a member of Reclamation District 784's board.

"It's one of those things where no one planned to have it there, but it's been there a whole lot longer than anyone else around here has," Graham said. "The appropriate thing to do is take care of it, but it will cost some coin."

Reynolds said he acknowledges the cost, but has a simple answer for those who question it: "What would you do if it was your ancestors?"

Contact Appeal-Democrat reporter Ben van der Meer at 749-4709 or bvandermeer@appealdemocrat.com.

**Attachment 2 – Updated Permit Tables for Project Elements 2, 3, 4, 5,
& 5A (Updates are bold and italics)**

<u>Project Element 2</u> Applicable Permit and Environmental Documentation (refer to exhibit A of overall TRLIA work plan)			
PERMITTING AGENCY	PERMIT	ACTION DONE	STATUS/COMMENTS
The Central Valley Flood Protection Board	Encroachment Permits	Yes	The CVFPB General Manager issued a phased permit (#18227) on April 7, 2008 that allows construction in non-federal jurisdictional areas
U.S. Fish and Wildlife Service	Endangered Species Act Compliance	Yes	Biological Opinion was approved on August 28, 2008
Native American Heritage Commission (NAHC)	Evaluation of effects on Native American burials or artifacts	Yes	Coordination with the NAHC was completed and MOA signed by all parties, on August 13, 2008
RWQCB, Region 5	National Pollution Discharge Elimination System (NPDES) Permit per Section 402 of the Clean Water Act	Yes	A NPDES permit (WDID # 5S5BC348901) was issued on 9/18/07 for Segments 1, 2, and 3.
Feather River Air Quality Management District (FRAQMD)	Authority to Construct	Yes	Contractor submitted Fugitive Dust Plan to FRAQMD
DFG	Streambed Alteration Agreement	Yes	The final Streambed Alteration Agreement was approved by DFG on January 2, 2008
Reclamation District 784 (RD 784)	Encroachment Permit	Yes	RD 784 is one of the project sponsors and coordination with RD 784 regarding levee encroachments is ongoing. RD 784 signed the application for the Central Valley Flood Protection Board encroachment permit with no objections.
Yuba County	Grading Permit	Yes	Grading permit was received in May 2008
State Mining and Geology Board (SMGB)	Reclamation Plan	Yes	<i>The Reclamation Plan was approved and SMGB mining permit (No. 91-58-0026) issued for Ella and Platter/JTS Borrow sites on Sept 22, 2009.</i>

CEQA	EIR	Yes	EIR certified by the TRLIA board on February 6, 2007 and a Notice of Determination filed with the State Clearinghouse (Number 2006062071) on February 8, 2007
CEQA	EIR Addendum #1	Yes	EIR addendum for offsite Platter Borrow site
CEQA	EIR Addendum #2	Yes	EIR addendum for Ella offsite borrow site
Section 104 Credit Application	Future federal projects cost Sharing	Yes	CVFPB submitted a request on June 15, 2007 for \$154.3M Section 104 credit to the Sacramento District.
Section 104 Credit Approval (N/A)	Future federal projects cost sharing	Yes	At the March 21 CVFPB meeting DWR stated it would waive the need for 104 credits – DWR waiver letter issued on May 2, 2008

Project Element 3 Applicable Permit and Environmental Documentation (refer to exhibit A of overall TRLIA work plan)			
PERMITTING AGENCY	PERMIT	Action Done	STATUS/COMMENTS
The Central Valley Flood Protection Board	Encroachment Permits	Yes	The CVFPB General Manager issued a phased permit (#18227) on April 7, 2008. The permit has two parts: Part A – Project Element 2 work to be done outside of jurisdictional waters of the U.S., and Part B – Project Element 3 work to be within jurisdictional waters of the U.S.
U.S. Army Corps of Engineers (Corps)	Section 10 Permit	Yes	Navigable waterways not affected
Corps	Section 404 Permit	Yes	Corps of Engineers signed the Feather River Setback Levee Environmental Impact Statement 404 permit Record of Decision on December 8, 2008 and the issued the final Feather River Setback 404 permit on December 15, 2008.
Corps	408 approval of project levee alteration	Yes	Corps of Engineers signed the Feather River Setback Levee Environmental Impact Statement 408 Authorization Record of Decision on December 8, 2008 and issued The Feather River Setback 408 Authorization on December 8, 2008.

Corps	Wetlands Delineation	Yes	Completed March 11, 2008
Corps	Wetlands Delineation	Yes	Amended September 30, 2008
Regional Water Quality Control Board (RWQCB); Central Valley Region (Region 5)	Section 401 Water Quality Certification	Yes	The Regional Water Quality Control Board signed the Section 401 Water Quality permit on November 24, 2008. Copy available on the
RWQCB, Region 5	National Pollution Discharge Elimination System (NPDES) Permit per Section 402 of the Clean Water Act	Yes	A NPDES permit (WDID # 5S5BC348901) was issued on 9/18/07 for Segments 1, 2, and 3.
Feather River Air Quality Management District (FRAQMD)	Authority to Construct	Yes	Contractor submitted a Fugitive Dust Plan to the FRAQMD prior to initiating construction on Segment 2.
U.S. Fish and Wildlife Service	Endangered Species Act Compliance	Yes	Biological Opinion was approved on August 28, 2008
National Marine Fisheries Service (NMFS)	Endangered Species Act Compliance	Yes	NMFS sent letter on December 13, 2007 concurring that setback levee is not likely to adversely affect any fish species under NMFS jurisdiction.
California Department of Fish and Game (DFG)	California Endangered Species Act Compliance	Yes	Section 2081 Permit received in August 2009
DFG	Streambed Alteration Agreement	Yes	The final Streambed Alteration Agreement was approved by DFG on January 2, 2008.
California State Lands Commission (SLC)	Encroachment Permit	Yes	All project facilities are outside SLC jurisdiction.
California Department of Forestry	Conversion of timberland to other uses.	Yes	No timberland conversion is required for the project.
The Resources Agency	Cancellation of Williamson Act Contract	Yes	No Williamson Act contract cancellations are required to implement the project.
California Department of Transportation (Caltrans)	Encroachment on or across a State highway	Yes	Project facilities do not encroach onto a State highway. However, construction equipment will likely use State Route 70 (SR 70). Development and implementation of a traffic control plan is being coordinated with Caltrans.
Native American Heritage Commission (NAHC)	Evaluation of effects on Native American burials or artifacts	Yes	Coordination with the NAHC was completed and MOA signed by all parties, on August 13, 2008.
State Office of Historic Preservation (SHPO)	Evaluation of effects on historic and cultural	Yes	Coordination with the SHPO was completed and MOA signed by all

	resources		parties, on August 13, 2008.
Reclamation District 784 (RD 784)	Encroachment Permit	Yes	RD 784 is one of the project sponsors and coordination with RD 784 regarding levee encroachments is ongoing. RD 784 signed the application for the Reclamation Board encroachment permit with no objections.
Yuba County	Grading Permit	Yes	Grading permit was received in May 2008
State Mining and Geology Board (SMGB)	Reclamation Plan	Yes	<i>The Reclamation Plan was approved and SMGB mining permit (No. 91-58-0026) issued for Ella and Platter/JTS Borrow sites on Sept 22, 2009.</i>
CEQA	EIR	Yes	EIR certified by the TRLIA board on February 6, 2007 and a Notice of Determination filed with the State Clearinghouse (Number 2006062071) on February 8, 2007.
NEPA	EIS	Yes	Corps of Engineers Finalized the Environmental Impact Statement and signed the Record of Decision on December 8, 2008.
Section 104 Credit	Future federal projects cost Sharing	Yes	The Section 104 credit for this Project Element was issued by the Corps on April 3, 2009

Project Element 4 Applicable Permit and Environmental Documentation (refer to exhibit A of overall TRLIA work plan)			
PERMITTING AGENCY	PERMIT	Action Done	STATUS/COMMENTS
California Central Valley Flood Protection Board	Encroachment Permit	Yes	<i>CVFPB issued permit No 18430 at the July 2009 Board meeting</i>
U.S. Army Corps of Engineers (Corps)	Section 10 Permit	Yes	Navigable waterways not affected
Corps	Section 404 Permit	Yes	Corps of Engineers signed the Feather River Setback Levee Environmental Impact Statement 404 permit Record of Decision on December 8, 2008 and the issued the final Feather River Setback 404 permit on December 15, 2008.
Corps	408 approval of project levee alteration	Yes	Corps of Engineers signed the Feather River Setback Levee Environmental

			Impact Statement 408 Authorization Record of Decision on December 8, 2008 and issued The Feather River Setback 408 Authorization on December 8, 2008.
Corps	Wetlands Delineation	Yes	Completed March 11, 2008
Corps	Wetlands Delineation	Yes	Amended September 30, 2008
Regional Water Quality Control Board (RWQCB); Central Valley Region (Region 5)	Section 401 Water Quality Certification	Yes	The Regional Water Quality Control Board signed the Section 401 Water Quality permit on November 24, 2008.
RWQCB, Region 5	National Pollution Discharge Elimination System (NPDES) Permit per Section 402 of the Clean Water Act	Yes	A NPDES permit (WDID # 5S5BC348901) was issued on 9/18/07 for Segments 1, 2, and 3.
Feather River Air Quality Management District (FRAQMD)	Authority to Construct	Yes	Contractor submitted a Fugitive Dust Plan to the FRAQMD prior to initiating construction on Segment 2.
U.S. Fish and Wildlife Service	Endangered Species Act Compliance	Yes	Biological Opinion was approved on August 28, 2008
National Marine Fisheries Service (NMFS)	Endangered Species Act Compliance	Yes	NMFS sent letter on December 13, 2007 concurring that setback levee is not likely to adversely affect any fish species under NMFS jurisdiction.
California Department of Fish and Game (DFG)	California Endangered Species Act Compliance	Yes	Section 2081 Permit received in August 2009
DFG	Streambed Alteration Agreement	Yes	The final Streambed Alteration Agreement was approved by DFG on January 2, 2008.
California State Lands Commission (SLC)	Encroachment Permit	Yes	All project facilities are outside SLC jurisdiction.
California Department of Forestry	Conversion of timberland to other uses.	Yes	No timberland conversion is required for the project.
The Resources Agency	Cancellation of Williamson Act Contract	Yes	No Williamson Act contract cancellations are required to implement the project.

California Department of Transportation (Caltrans)	Encroachment on or across a State highway	Yes	Project facilities do not encroach onto a State highway. However, construction equipment will likely use State Route 70 (SR 70). Development and implementation of a traffic control plan is being coordinated with Caltrans.
Native American Heritage Commission (NAHC)	Evaluation of effects on Native American burials or artifacts	Yes	Coordination with the NAHC was completed and MOA signed by all parties, on August 13, 2008.
State Office of Historic Preservation (SHPO)	Evaluation of effects on historic and cultural resources	Yes	Coordination with the SHPO was completed and MOA signed by all parties, on August 13, 2008.
Reclamation District 784 (RD 784)	Encroachment Permit	Yes	RD 784 is one of the project sponsors and coordination with RD 784 regarding levee encroachments is ongoing. RD 784 signed the application for the Reclamation Board encroachment permit with no objections.
Yuba County	Grading Permit	Yes	Grading permit was received in May 2008
State Mining and Geology Board (SMGB)	Reclamation Plan	Yes	<i>The Reclamation Plan was approved and SMGB mining permit (No. 91-58-0026) issued for Ella and Platter/JTS Borrow sites on Sept 22, 2009.</i>
CEQA	EIR	Yes	EIR certified by the TRLIA board on February 6, 2007 and a Notice of Determination filed with the State Clearinghouse (Number 2006062071) on February 8, 2007.
NEPA	EIS	Yes	Corps of Engineers Finalized the Feather River Setback Levee Environmental Impact Statement and signed the Record of Decision on December 8, 2008.
Section 104 Credit	Future federal projects cost Sharing	Yes	The Section 104 credit for this Project Element was issued by the Corps on April 3, 2009

Project Element 5 Applicable Permit and Environmental Documentation (refer to exhibit A of overall TRLIA work plan)

PERMITTING AGENCY	PERMIT	ACTION DONE	STATUS/COMMENT
Central Valley Flood Protection Board (CVFPB)	Encroachment Permit	Yes	Permit No. 18170 BD issued on August 7, 2007.
Central Valley Flood Protection Board (CVFPB)	Encroachment Permit	Yes	Permit No. 18170 BD permit modified for seepage berm to provide final fix for cutoff wall trench cave-in, issued on 7/17/08
U.S. Army Corps of Engineers (Corps)	Section 10 Permit	Yes	Navigable waterways not affected
Corps	Section 404 Permit	Yes	No jurisdictional features affected. Corps issued "Letter of No Permit Required" on July 23, 2007
Corps	408 Approval of project levee alteration	Yes	Finding of No Significant Impact (FONSI) issued by Corps of Engineers on July 11, 2007. Corps approved Section 408 alteration on August 2, 2007.
Regional Water Quality Control Board (RWQCB); Central Valley Region (Region 5)	Section 401 Water Quality Certification	Yes	No 404 permit triggering 401 compliance. RWQCB sent email on August 15, 2007 verifying that 401 certification was not necessary
RWQCB, Region 5	National Pollution Discharge Elimination System (NPDES) Permit per Section 402 of the Clean Water Act	Yes	A NPDES permit (WDID # 5S5BC348901) was issued on 9/18/07. A Storm water Pollution Prevention Plan (SWPPP) has been developed and is being followed.
Feather River Air Quality Management District (FRAQMD)	Authority to Construct	Yes	Contractor's Fugitive Dust Plan has been developed and submitted to the FRAQMD.
U.S. Fish and Wildlife Service	Endangered Species Act Compliance	Yes	Project design and mitigation measures prevent take of threatened and endangered species. FWS sent a letter on May 7, 2007 agreeing that there were no impacts to any endangered species.
National Marine Fisheries Service	Endangered Species Act Compliance	Yes	Project will have no affect on fishery resources and habitats.
California Department of Fish and Game (DFG)	California Endangered Species Act Compliance	Yes	Project design and mitigation measures prevent take of threatened and endangered species.

DFG	Streambed Alteration Agreement	Yes	All ground disturbances is above the Feather River ordinary high water mark. Neither the bed nor bank of the river will be disturbed. DFG sent letter on May 2, 2007 verifying that a Streambed Alteration Agreement was not required.
California State Lands Commission (SLC)	Encroachment Permit	Yes	All ground disturbance is above the Feather River ordinary high water mark and outside SLC jurisdiction.
California Department of Forestry	Conversion of timberland to other uses.	Yes	No timberland conversion is required for the project.
The Resources Agency	Cancellation of Williamson Act Contract	Yes	No Williamson Act contract cancellations are required to implement the project.
California Department of Transportation (Caltrans)	Encroachment on or across a State highway	Yes	Project facilities do not encroach onto a State highway. However, construction equipment will likely use State Route 70 (SR 70). Development and implementation of a traffic control plan is being coordinated with Caltrans.
Caltrans	Encroachment on Caltrans property	Yes	A portion of a stability berm encroaches a short distance onto property owned by Caltrans used for habitat mitigation. A real estate easement for this berm was obtained from Caltrans. No adverse effects to protected habitats occur.
Native American Heritage Commission (NAHC)	Evaluation of effects on Native American burials or artifacts	Yes	Coordination with the NAHC has occurred and no known Native American sites or sensitive areas would be affected by the project
State Office of Historic Preservation (SHPO)	Evaluation of effects on historic and cultural resources	Yes	No known sensitive historic or cultural resources would be affected by the project. SHPO sent letter on July 16, 2007 agreeing that no impacts to historic or cultural resources were occurring.
Reclamation District 784 (RD 784)	Encroachment Permit	Yes	RD 784 is one of the project sponsors and coordination with RD 784 regarding levee encroachments is ongoing. RD 784 signed the application for a CVFPB encroachment permit

Yuba County	Grading Permit	Yes	Yuba County is one of the project sponsors and coordination with the County regarding construction of this project continues.
CEQA	EIR Processed for Various Permits	Yes	EIR certified by the TRLIA board on February 6, 2007 and a Notice of Determination filed with the State Clearinghouse (Number 2006062071) on February 8, 2007
CEQA	EIR Addendum # 2	Yes	EIR addendum for the Seepage berm addition needed to provide the final solution to the cutoff wall trench failure.
Section 104 Credit	Future federal projects cost sharing	Yes	\$32.7 M Section 104 credit approved by Corps HQ on August 7, 2007

Project Element 5A: Feather River Erosion Site 2

PERMITTING AGENCY	PERMIT	ACTION DONE	STATUS/COMMENT
Central Valley Flood Protection Board	Encroachment Permits	<i>Yes</i>	<i>Encroachment permit No. 18479 issued on September 10, 2009</i>
Corps	Section 404 Permit	Yes	Obtained Nationwide Permit, application submitted to Corps on June 25, 2009
Corps	Wetlands Delineation	Yes	Delineation submitted to Corps on May 27, 2009
Corps	408 approval of project levee alteration	Yes	Corps does not consider this as eligible under the Section 408 approval given for Segments 1 & 3. Per discussion with the Corps, they will approve work under Section 208 authority when they comment on the CVFPB Encroachment Permit Application.
Regional Water Quality Control Board (RWQCB); Central Valley Region (Region 5)	Section 401 Water Quality Certification	Yes	Obtained on July 9, 2009
RWQCB, Region 5	National Pollution Discharge Elimination System (NPDES) Permit per Section 402 of the Clean Water Act	Yes	TRLIA has a current WDID # 5S5BC348901 that was issued by the Regional Water Quality Control Board. The permit covers Feather River Segments 1, 2, and 3 and encompasses the Erosion Site. This

			permit is current.
Feather River Air Quality Management District (FRAQMD)	Authority to Construct	<i>Yes</i>	<i>Used Documentation provided for Project Element 5</i>
U.S. Fish and Wildlife Service	Endangered Species Act Compliance (Biological Opinion)	Yes	Biological opinion prepared, take avoided, no Incidental Take authorization needed.
National Marine Fisheries Service (NMFS)	Endangered Species Act Compliance	Yes	Biological opinion prepared, take avoided, no Incidental Take authorization needed.
California Department of Fish and Game (DFG)	California Endangered Species Act Compliance (2081)	Yes	No potential take of State listed species.
DFG	Streambed Alteration Agreement	Yes	Obtained on July 9, 2009
Native American Heritage Commission (NAHC)	Evaluation of effects on Native American burials or artifacts	Yes	Cultural resources surveys and consultation with Native American groups have found no evidence of burials or artifacts
State Office of Historic Preservation (SHPO)	Evaluation of effects on historic and cultural resources	Yes	Cultural resources surveys and consultation with Native American groups have found no evidence of significant historic or cultural resources
Reclamation District 784 (RD 784)	Encroachment Permit	Yes	RD 784 is one of the project sponsors and coordination with RD 784 regarding levee encroachments is ongoing. RD 784 signed the application for the Reclamation Board encroachment permit with minor conditions.
Yuba County	Grading Permit	<i>Yes</i>	<i>Used Documentation provided for Project Element 5</i>
State Mining and Geology Board (SMGB)	SMARA Permit	<i>Yes</i>	<i>The Reclamation Plan was approved and SMGB mining permit (No. 91-58-0026) issued for Ella and Platter/JTS Borrow sites on Sept 22, 2009. Used Ella Site.</i>

CEQA	EIR	Yes	ISIMND certified by TRLIA Board on 10/17/06
NEPA	EIS	Yes	No federal action constituting a NEPA trigger
Section 104 Credit	Future federal projects cost sharing	Yes	Work is not eligible for Section 104 Credit because it is being accomplished under Section 208 authority and was not approved under Section 408 authority.

Attachment 3 – Associated Project Element 2 & 9A Updated Permit Table (Updates are bold and italics)

Associated Project Element 1 Permit and Environmental Documentation			
PERMITTING AGENCY	PERMIT	ACTION DONE	STATUS/COMMENT
The Central Valley Flood Protection Board	Encroachment Permit	Yes	Permit No. 18170 BD issued on August 7, 2007.
The Central Valley Flood Protection Board	Encroachment Permit	Yes	Permit No. 18170 BD modified for design changes, issued on 7/17/08
U.S. Army Corps of Engineers (Corps)	Section 10 Permit	Yes	Navigable waterways not affected
Corps	Section 404 Permit	Yes	No jurisdictional features affected. Corps issued “Letter of No Permit Required” on July 23, 2007. Subsequently, a Nationwide permit was received in July 2008 allowing repairs to sinkholes observed on the waterside toe of the existing levee in a reach of the Site 7 Extension segment of levee.
Corps	408 Approval of project levee alteration	Yes	Finding of No Significant Impact (FONSI) issued by Corps of Engineers on July 11, 2007. Corps approved Section 408 alteration on August 2, 2007. Subsequently, water quality certification was received in July 2008 allowing repairs to sinkholes observed on the waterside toe of the existing levee in a reach of the Site 7 Extension segment of levee.
Regional Water Quality Control Board (RWQCB); Central Valley Region (Region 5)	Section 401 Water Quality Certification	Yes	No 404 permit triggering 401 compliance. RWQCB sent email on August 15, 2007 verifying that 401 certification was not necessary
RWQCB, Region 5	National Pollution Discharge Elimination System (NPDES) Permit per Section 402 of the Clean Water Act	Yes	A NPDES permit (WDID # 5S5BC348901) was issued on 9/18/07. A Storm water Pollution Prevention Plan (SWPPP) has been developed and is being followed.
Feather River Air Quality Management District (FRAQMD)	Authority to Construct	Yes	Contractor’s Fugitive Dust Plan has been developed and submitted to the FRAQMD.
U.S. Fish and Wildlife Service	Endangered Species Act Compliance	Yes	Project design and mitigation measures prevent take of threatened and endangered species. FWS sent a

			letter on May 7, 2007 agreeing that there were no impacts to any endangered species.
National Marine Fisheries Service	Endangered Species Act Compliance	Yes	Project will have no affect on fishery resources and habitats.
California Department of Fish and Game (DFG)	California Endangered Species Act Compliance	Yes	Project design and mitigation measures prevent take of threatened and endangered species.
DFG	Streambed Alteration Agreement	Yes	All ground disturbance is above the Feather River ordinary high water mark. Neither the bed nor bank of the river will be disturbed. DFG sent letter on May 2, 2007 verifying that a Streambed Alteration Agreement was not required. Subsequently, a streambed authorization permit was received in June 2008 allowing repairs to sinkholes observed on the waterside toe of the existing levee in a reach of the Site 7 Extension segment of levee.
California State Lands Commission (SLC)	Encroachment Permit	Yes	All ground disturbance is above the Feather River ordinary high water mark and outside SLC jurisdiction.
California Department of Forestry	Conversion of timberland to other uses.	Yes	No timberland conversion is required for the project.
The Resources Agency	Cancellation of Williamson Act Contract	Yes	No Williamson Act contract cancellations are required to implement the project.
California Department of Transportation (Caltrans)	Encroachment on or across a State highway	Yes	Project facilities do not encroach onto a State highway. However, construction equipment will likely use State Route 70 (SR 70). Development and implementation of a traffic control plan is being coordinated with Caltrans.
Caltrans	Encroachment on Caltrans property	Yes	A portion of a stability berm encroaches a short distance onto property owned by Caltrans used for habitat mitigation. A real estate easement for this berm was obtained from Caltrans. No adverse effects to protected habitats occur.

Native American Heritage Commission (NAHC)	Evaluation of effects on Native American burials or artifacts	Yes	Coordination with the NAHC has occurred and no known Native American sites or sensitive areas would be affected by the project
State Office of Historic Preservation (SHPO)	Evaluation of effects on historic and cultural resources	Yes	No known sensitive historic or cultural resources would be affected by the project. SHPO sent letter on July 16, 2007 agreeing that no impacts to historic or cultural resources were occurring.
Reclamation District 784 (RD 784)	Encroachment Permit	Yes	RD 784 is one of the project sponsors and coordination with RD 784 regarding levee encroachments is ongoing. RD 784 signed the application for a CVFPB encroachment permit with no objections.
Yuba County	Grading Permit	Yes	Yuba County is one of the project sponsors and coordination with the County regarding construction of this project continues.
CEQA	EIR Processed for Various Permits	Yes	EIR certified by the TRLIA board on February 6, 2007 and a Notice of Determination filed with the State Clearinghouse (Number 2006062071) on February 8, 2007
CEQA	CEQA Addendum #2	Yes	EIR addendum for the Water Blanket modifications.
Section 104 Credit	Future federal projects cost sharing	Yes	\$32.7 M Section 104 credit approved by Corps HQ on August 7, 2007

Attachment 4 – Construction Photos



Existing Levee Work @ South Tie-In
Sept - South Tie-In Levee @ Cultural Site



Slurry Wall @ South Tie-In



July – South Tie-In



September – South Tie-In



Slurry Wall Construction



Pump Station 3 pipe Alignment
Over levee



Drainage Ditch by Rice's Peach Trees



Platter Borrow Site



Landside Drainage Ditch



Levee Construction



Inclinometers @ South Tie-In Cultural Site



Naumes Borrow Site

Appendix I

Appendix I: TRLIA Feather River Levee Improvement Project Sixth Quarterly Progress
Report Budget Information; EPS #16497-6; November 16, 2009

MEMORANDUM

To: Paul Brunner, Executive Director
Three Rivers Levee Improvement Authority

From: Seth Wurzel

Subject: TRLIA Feather River Levee Improvement Project
Sixth Quarterly Progress Report Budget Information;
EPS #16497-6

Date: November 16, 2009

The Economics of Land Use



This memorandum has been prepared by Economic & Planning Systems (EPS) at the request of Three Rivers Levee Improvement Authority (TRLIA) to supplement the Sixth Quarterly Progress Report (6th QPR) submitted to the Department of Water Resources (DWR) November 16, 2009 for the Feather River Levee Improvement Project (Project). As indicated in TRLIA's 6th QPR, the cost and budget information is being provided within this memorandum to DWR as an attachment to the 6th QPR.

This memorandum includes two sets of tables that present the following analyses:

1. **Quarterly Work Plan Reconciliation**—A reconciliation of the Sixth Quarterly Work Plan forecasted expenditures to the actual expenses incurred for the quarter's work and, the associated funding of the State Share received pursuant to Section 14.C of TRLIA funding agreement with DRW (Funding Agreement).
2. **Cost and Funding Status through the Fifth Quarter**—A summary of the cumulative costs incurred since November 6, 2006 through September 30, 2009¹ and a comparison of those costs incurred to

*Economic & Planning Systems, Inc.
2150 River Plaza Drive, Suite 400
Sacramento, CA 95833-3883
916 649 8010 tel
916 649 2070 fax*

*Berkeley
Sacramento
Denver*

www.epsys.com

¹ Inclusive of the expenses incurred through September 30, 2009 and paid by TRLIA through the month of October 2009. Reference the November 16, 2009 TRLIA Progress Summary - Final Statement of Costs for the 6th Quarter (preliminary not approved by DWR).

the current Overall Work Plan Budget (based on the revisions by TRLIA submitted on July 31, 2009²) included as Exhibit A to the Funding Agreement.

1. Quarterly Work Plan Reconciliation

The following tables provide detailed information regarding the costs incurred for each Element and Feature during the 6th Quarter (July 1, 2009 through September 30, 2009) and compare these amounts to the forecasted expenditures for the Quarter presented within the 6th Quarterly Work Plan. The tables show the State Share of eligible expenses net of the required 10% withholding of the State Share and compares this amount to the funding received by TRLIA from the State for the 6th Quarter. Real Estate costs (Element 1) and funding are shown separately from the costs and funding for Elements 2 through 7.

The following presents a summary of the conclusions drawn from the tables:

6th Quarter Reconciliation Summary (Elements 2 through 7)

	<u>Total</u>	<u>State Share</u>
Total Expenses Incurred During 6th Quarter [1]	\$18,940,966	\$11,198,319
10% Required Retention		-\$1,119,832
State Share Net of Retention		\$10,078,487
Less Funding Received for State Share		-\$10,624,338
Additional State Funding Received for 6th Quarter [2]		-\$545,851
Required True-Up Adjustment to Future Quarterly Advances		-\$545,851

[1] Estimated amount, subject to review and approval by DWR.

[2] Additional Funding for the 7th Quarter has not yet been received, however a payment is in process. This amount will be reconciled with that amount of funding received in the future.

This information concludes that, for the Sixth Quarter, the State has over-funded its share of the expenses net of the 10% hold-back provision in the Funding Agreement. This can be attributed to differences in the amount of expenses forecasted for Elements 2 and 5 versus the amount of actual expenses incurred in Elements 2 and 5. In particular, for Element 2, TRLIA forecasted to incur \$12.3 million of expenses and only incurred \$9.3 million. However, this was mostly offset by the expenses incurred in Element 4 (levee degradation). TRLIA understands that the State will adjust future funding by this amount through the True-Up process.

² On July 31, 2009 TRLIA submitted a Revised Exhibit A that included Element 5A to the Over All Work Plan.

TRLIA Quarterly Progress Report Real Estate Budget Reconciliation

For Period July / August / September 2009 (6th Qtr)

ELEMENT 1

Elements and Features	State Share Percentage	6th QWP Forecast Total [1]	6th Qtr Expenses [2]			6th QWP Qtr Funding		
			Total	State Share	Local Share	DWR Direct Pay	Local Credit Invoiced	Total
<i>Formula</i>	a	b	c	d = a*c	e = c - d	f	g	h = f+g
Element 1: Feather River EIP Land Acquisition (see real estate Acquisition Plan)								
Feature 1 - Feather Segment 2	[3]	\$850,000	\$0	\$0	\$0	\$0	\$0	\$0
Feature 1 - Feather Segment 2	[4]	N/A	\$635,770	\$526,574	\$109,196	\$0	\$0	\$0
Feature 2 - Feather Segment 3		\$36,400	\$0	\$0	\$0	\$0	\$0	\$0
Subtotal Element 1		\$886,400	\$635,770	\$526,574	\$109,196	\$0	\$0	\$0
Difference Between QWP & Actuals			\$250,630					

"6QPRElem1"

[1] From the May 15, 2009 6th QWP.

[2] From April 1, 2009 through September 30, 2009

[3] This line represents Real Estate expenses paid through direct payment process from the State for the quarter

[4] This line represents Real Estate expenses directly funded by TRLIA but eligible for funding through the final accounting package process.

Summary of TRLIA Quarterly Progress Report Budget Reconciliation

For Period July / August / September 2009 (6th Qtr)

SUMMARY ALL NON-REAL ESTATE ELEMENTS

Elements and Features	Total 6th QWP Quarter Work Plan	Total Expenses for 6th QWP Quarter	State Share			Local Share		
			To be Funded Net of 10% Holdback	State Funding Rec'd for 6th QWP Quarter	State Funding Remaining to be Received for Quarter	Local Share of Actual Costs for Quarter	Balance of Local Credit Funding Remaining	Remaining Local Share Funded by TRLIA
<i>Formula</i>			a	[1] b	[2] c = a - b	d	[3] e	f = d - e
ALL OTHER ELEMENTS								
Element 2: Segment 2 New Levee	\$12,318,013	\$9,380,250	\$6,992,238	\$6,376,103	\$616,134	\$1,611,097	\$0	\$1,611,097
Element 3: Segment 2 Levee Tie Ins	\$7,138,462	\$6,994,787	\$1,201,384	\$3,695,042	-\$2,493,658	\$1,201,384	\$0	\$1,201,384
Element 4: Segment 2 Levee Degradation	\$0	\$2,174,454	\$1,620,884	\$0	\$1,620,884	\$373,472	\$0	\$373,472
Element 5: Segment 3 Levee Improvement	\$785,881	\$83,176	\$52,401	\$406,791	-\$354,390	\$24,953	\$0	\$24,953
Element 5A: Feather River Segment 3 Erosion Site 2	\$0	\$17,962	\$11,316	\$0	\$11,316	\$5,389	\$0	\$5,389
Element 6: Land Management	\$49,435	\$13,983	\$10,423	\$25,589	-\$15,166	\$2,402	\$0	\$2,402
Element 7: Project Management, Legal, Community Relations Support, Land Management, and Overhead	\$233,400	\$276,383	\$189,842	\$120,814	\$69,028	\$65,448	\$0	\$65,448
Subtotal Elements 2 through 7	\$20,525,191	\$18,940,996	\$10,078,487	\$10,624,338	<u>-\$545,851</u>	\$3,284,144	\$0	<u>\$3,284,144</u>
Difference Between QWP & Actuals		<u>\$1,584,195</u>						

"6QPRSumm"

[1] Funding received for 6th QWP Quarter has been received. Additional funding for the 6th Quarter also received is not reflected here.

[2] Amount represents funding received from the State based on actual expenses for the 6th QWP Quarter. This amount will be offset based on True-Ups adjustments in future quarters.

[3] All remaining local credit has been funded. No additional Local expenses can be offset by Local Credit from the State.

TRLIA Quarterly Progress Report Budget Reconciliation

For Period July / August / September 2009 (6th Qtr)

ELEMENT 2

Elements and Features	State Share %	6th QWP Forecast [1]	6th Qtr Expenses [2]			State Share
			Total	State Share	Local Share	To be Funded Net of 10% Holdback
<i>Formula</i>	a	b	c	d=c*a	e=c-d	f = d*90%
Element 2: Feather River Segment 2 new levee (Excludes Levee Tie Ins and Existing Levee Degradation)						
2.1.1: Design	82.8246%	\$130,000	\$207,377	\$171,759	\$35,618	\$154,583
2.1.2: Permitting	82.8246%	\$60,000	\$42,517	\$35,214	\$7,302	\$31,693
2.1.3: Right of Way Support	82.8246%	\$450,000	\$222,696	\$184,447	\$38,249	\$166,003
2.2: Construction Management	82.8246%	\$1,324,000	\$961,770	\$796,582	\$165,188	\$716,924
2.3 Construction of Setback						
2.3.1: Foundation	82.8246%	\$476,777	\$123,058	\$101,922	\$21,136	\$91,730
2.3.2: Embankment	82.8246%	\$8,207,000	\$6,918,159	\$5,729,936	\$1,188,223	\$5,156,942
2.3.3: Reloc. of PG&E Facilities	82.8246%	\$1,450,772	\$17,911	\$14,835	\$3,076	\$13,351
2.4: Environmental & Cultural Mitigation						
2.4.1: Mitigation & Restoration	82.8246%	\$189,464	\$885,827	\$733,683	\$152,145	\$660,314
2.4.2: Cultural Mit./Section 106	82.8246%	\$0	\$0	\$0	\$0	\$0
2.5: O&M Manual	82.8246%	\$30,000	\$935	\$774	\$161	\$697
Subtotal Element 2		\$12,318,013	\$9,380,250	\$7,769,153	\$1,611,097	\$6,992,238
			Difference Between QWP & Actuals	\$2,937,763		

"6QPRElem2"

[1] From the May 15, 2009 6th QWP.

[2] From April 1, 2009 through September 30, 2009

TRLIA Quarterly Progress Report Budget Reconciliation

For Period July / August / September 2009 (6th Qtr)

ELEMENT 3

Elements and Features	State Share %	6th QWP Forecast [1]	6th QWP Qtr Expenses [2]			State Share
			Total	State Share	Local Share	To be Funded Net of 10% Holdback
<i>Formula</i>	a	b	c	d=c*a	e=c-d	f = d*90%
Element 3: Feather River Segment 2 Levee Tie Ins						
3.1.1: Foundation	82.8246%	\$3,688,462	\$4,656,765	\$3,856,946	\$799,819	\$3,471,252
3.1.2: Embankment	82.8246%	\$3,450,000	\$2,338,022	\$1,936,457	\$401,565	\$1,742,811
Subtotal Element 3		\$7,138,462	\$6,994,787	\$5,793,403	\$1,201,384	\$1,201,384
Difference Between QWP & Actuals			\$143,675			

"6QPRElem3"

[1] From the May 15, 2009 6th QWP.

[2] From April 1, 2009 through September 30, 2009

TRLIA Quarterly Progress Report Budget Reconciliation

For Period July / August / September 2009 (6th Qtr)

ELEMENT 4

Elements and Features	State Share %	6th QWP Forecast [1]	6th QWP Qtr Expenses [2]			State Share
			Total	State Share	Local Share	To be Funded Net of 10% Holdback
<i>Formula</i>	a	b	c	d=c*a	e=c-d	f = d*90%
Element 4: Feather River Segment 2 Levee Degradation						
4.1: Construction	82.8246%	\$0	\$2,174,454	\$1,800,983	\$373,472	\$1,620,884
Subtotal Element 4		\$0	\$2,174,454	\$1,800,983	\$373,472	\$1,620,884
			Difference Between QWP & Actuals	-\$2,174,454		

"6QPRElem4"

[1] From the May 15, 2009 6th QWP.

[2] From April 1, 2009 through September 30, 2009

TRLIA Quarterly Progress Report Budget Reconciliation

For Period July / August / September 2009 (6th Qtr)

ELEMENT 5

Elements and Features	State Share %	6th QWP Forecast [1]	6th QWP Qtr Expenses [2]			State Share
			Total	State Share	Local Share	To be Funded Net of 10% Holdback
<i>Formula</i>	a	b	c	d=c*a	e=c-d	f = d*90%
Element 5: Feather River Segment 3 levee improvement						
5.1.1: Design	70.0000%	\$45,000	\$355	\$248	\$106	\$223
5.1.2: Permitting	70.0000%	\$60,000	\$7,702	\$5,391	\$2,311	\$4,852
5.1.3: Right of Way Support [4]	70.0000%	\$7,341	\$18,629	\$13,040	\$5,589	\$11,736
5.2: Construction Management	70.0000%	\$42,000	\$1,203	\$842	\$361	\$758
5.3 Construction	70.0000%	\$631,540	\$55,288	\$38,702	\$16,586	\$34,832
5.4: O&M Manual	70.0000%	\$0	\$0	\$0	\$0	\$0
Subtotal Element 5		\$785,881	\$83,176	\$58,223	\$24,953	\$52,401
Difference Between QWP & Actuals			\$702,704			

"6QPRElem5"

[1] From the May 15, 2009 6th QWP.

[2] From April 1, 2009 through September 30, 2009

TRLIA Quarterly Progress Report Budget Reconciliation

For Period July / August / September 2009 (6th Qtr)

ELEMENT 5A

Elements and Features	State Share %	6th QWP Forecast [1]	6th QWP Qtr Expenses [2]			State Share
			Total	State Share	Local Share	To be Funded Net of 10% Holdback
<i>Formula</i>	a	b	c	d=c*a	e=c-d	f = d*90%
Element 5A: Feather River Segment 3 Erosion Site 2						
5A.1.1 - Design	70.0000%	N/A	\$12,132	\$8,492	\$3,640	\$7,643
5A.1.2 - Permitting	70.0000%	N/A	\$0	\$0	\$0	\$0
5A.1.3 - ROW Support	70.0000%	N/A	\$5,830	\$4,081	\$1,749	\$3,673
5A.2 - Construction Management.	70.0000%	N/A	\$0	\$0	\$0	\$0
5A.3 - Construction	70.0000%	N/A	\$0	\$0	\$0	\$0
5A.4 - O&M manual addendum	70.0000%	N/A	\$0	\$0	\$0	\$0
Subtotal Element 5A		\$0	\$17,962	\$12,573	\$5,389	\$11,316
Difference Between QWP & Actuals			-\$17,962			

"6QPRElem5A"

[1] From the May 15, 2009 6th QWP.

[2] From April 1, 2009 through September 30, 2009

TRLIA Quarterly Progress Report Budget Reconciliation

For Period July / August / September 2009 (6th Qtr)

ELEMENT 6

Elements and Features	State Share %	6th QWP Forecast [1]	6th QWP Qtr Expenses [2]			State Share
			Total	State Share	Local Share	To be Funded Net of 10% Holdback
<i>Formula</i>	a	b	c	d=c*a	e=c-d	f = d*90%
Element 6: Feather River Land Management						
Feature 6.1: Env. Maintenance	82.8246%	\$49,435	\$13,983	\$11,581	\$2,402	\$10,423
Feature 6.2: Lease Back	82.8246%	\$0	\$0	\$0	\$0	\$0
Feature 6.3: Land Maintenance	82.8246%	\$0	\$0	\$0	\$0	\$0
Subtotal Element 6		\$49,435	\$13,983	\$11,581	\$2,402	\$10,423
Difference Between QWP & Actuals			\$35,452			

"6QPRElem6"

[1] From the May 15, 2009 6th QWP.

[2] From April 1, 2009 through September 30, 2009

TRLIA Quarterly Progress Report Budget Reconciliation

For Period July / August / September 2009 (6th Qtr)

ELEMENT 7

Elements and Features	State Share %	6th QWP Forecast [1]	6th QWP Qtr Expenses [2]			State Share
			Total	State Share	Local Share	To be Funded Net of 10% Holdback
<i>Formula</i>	a	b	c	d=c*a	e=c-d	f = d*90%
Element 7: Project Management, Legal, Community Relations support, Land Management, and Overhead						
Feature 7.1: Salaries	76.3198%	\$90,000	\$68,087	\$51,964	\$16,123	\$46,768
Feature 7.2: Consulting	76.3198%	\$50,000	\$83,993	\$64,103	\$19,890	\$57,693
Feature 7.3: Legal	76.3198%	\$50,000	\$85,467	\$65,228	\$20,239	\$58,705
Feature 7.4: Travel	76.3198%	\$600	\$1,423	\$1,086	\$337	\$978
Feature 7.5: General	76.3198%	\$40,000	\$27,242	\$20,791	\$6,451	\$18,712
Feature 7.6: Insurance	76.3198%	\$0	\$0	\$0	\$0	\$0
Feature 7.7: Travel/Vehicle	76.3198%	\$2,300	\$1,172	\$894	\$277	\$805
Feature 7.8: Memberships	76.3198%	\$500	\$8,999	\$6,868	\$2,131	\$6,181
Subtotal Element 7		\$233,400	\$276,383	\$210,935	\$65,448	\$189,842
			Difference Between QWP & Actuals	-\$42,983		

"6QPRElem7"

[1] From the May 15, 2009 6th QWP.

[2] From April 1, 2009 through September 30, 2009

2. Cost and Funding Status through the 6th Quarter

The following set of tables present the status of the project on cumulative expenditure basis as it relates to the current Overall Work Plan Budget (based on the revisions made by TRLIA submitted with the 7th Quarterly Work Plan submitted on August 15, 2009).

In summary, through September 30, 2009, TRLIA has incurred expenses for the project which represent 78.7% of the total amended budget for Elements 1 through 7 (\$140.8 million of the \$179.0 million dollar total budget currently eligible for State Sharing). As TRLIA has not received any additional funding since June 2009, the State has still funded 66.8% of its share of the Overall Budget through the 6th Quarter (\$92.8 million of \$139.1 million).

With respect to the individual feature budgets within elements, several features have exceeded the revised total Overall Work Plan Budgets. However, only two features have exceeded their budgets by more than 5%. These features are:

- Element 3 – Feature 3.1.1 Levee Tie-in Foundation Construction (it has been highlighted in the following table set for clarity);
- Element 7 – Feature 7.6 Insurance (it has been highlighted in the following table set for clarity);

The following discussion outlines an explanation of these budget overruns.

Foundation Construction Tie-Ins (Feature 3.1.1 - Element 3)

The total budget for Tie-In Foundation construction is approximately 78% over (by \$2.5 million) as of September 30, 2009. TRLIA has determined that the current expenses have exceeded the overall budget for Feature due to the cost coding of invoiced from Tiechert. Because the Tiechert Contract is not structured in the same manner as costs are tracked between Tie-In and Non Tie-In work for funding agreement with the state, the allocation of costs appearing on invoices is allocated by TRLIA construction management consultants. Adjustments in cost coding are currently underway by TRLIA staff to correct this issue. It is important to note that the overall budget for Tie-In related work (Element 3) is under budget. There is over \$2.8 million of budget remaining as of September 30, 2009 for Feature 3.1.2 (Tie-In Embankment work). Therefore, the budget overrun is really only a cost coding issue which be resolved in the future.

Insurance (Feature 6 - Element 7)

The total budget for insurance is \$461,375. The expenses through the 6th Quarter Total \$700,733. The last expense for insurance was incurred at the end of the 5th Quarter. There were no expenses in the 6th Quarter. TRLIA does not expect to incur any additional premiums for this project. The remaining budget within Element 7 is sufficient to cover the costs of the overrun in this particular feature.

Summary of TRLIA Progress Report Overall Funding Status

Cumulative Through September 2009

SUMMARY ALL ELEMENTS

Elements and Features	Overall Budget [1]			Actual Expenses to Date [2]			Remaining Budget			Percentage of Total Budget Expended
	Total	State	Local	Total	State Share	Local Share	Total	State Share	Local Share	
<i>Formula</i>	a	b	c = a - b	d	e	f = d - e	g = a - d	h = b - e	i = c - f	j = d/a
Quarterly Progress Report Reconciliation										
Element 1: Feather River EIP Land Acquisition	\$50,920,299	\$39,801,280	\$11,119,019	\$37,423,750	\$30,996,065	\$6,427,685	\$13,496,549	\$8,805,215	\$4,691,333	73.5%
Element 2: Segment 2 New Levee	\$84,633,946	\$67,426,226	\$17,207,720	\$75,634,182	\$62,643,695	\$12,990,486	\$8,999,764	\$4,782,531	\$4,217,234	89.4%
Element 3: Segment 2 Levee Tie Ins	\$10,465,252	\$8,261,752	\$2,203,500	\$10,198,506	\$8,446,870	\$1,751,636	\$266,746	-\$185,118	\$451,864	97.5%
Element 4: Segment 2 Levee Degradation	\$15,996,136	\$11,512,043	\$4,484,093	\$2,174,454	\$1,800,983	\$373,472	\$13,821,682	\$9,711,060	\$4,110,621	13.6%
Element 5: Segment 3 Levee Improvement	\$11,375,917	\$7,851,905	\$3,524,012	\$10,961,590	\$7,673,113	\$3,288,477	\$414,327	\$178,792	\$235,535	96.4%
Element 5A: Feather River Segment 3 Erosion Site 2	\$855,000	\$598,500	\$256,500	\$169,156	\$118,409	\$50,747	\$685,844	\$480,091	\$205,753	19.8%
Element 6: Land Management	\$300,000	\$248,474	\$51,526	\$100,101	\$82,908	\$17,193	\$199,899	\$165,565	\$34,333	33.4%
Element 7: Project Management, Legal, Community Relations Support, Land Management, and Overhead	\$4,465,840	\$3,408,320	\$1,057,520	\$4,168,459	\$3,181,359	\$987,100	\$297,381	\$226,961	\$70,421	93.3%
Subtotal Elements 1 through 7	\$179,012,390	\$139,108,500	\$39,903,890	\$140,830,199	\$114,943,403	\$25,886,796	\$38,182,192	\$24,165,097	\$14,017,095	78.7%
State Funding Received Through 5th Quarter [3]										
Real Estate Advances	\$30,911,849									
Construction Funding	\$61,975,621									
Total Funding Received	\$92,887,470									
Percentage of State Budget Funded	66.8% (Through September 2009)									

"6QPRTotSumm"

[1] Revised per the 7th QWP dated August 15, 2009.

[2] Total expenses for project through September 30, 2009 including expenses prior to effective date of agreement

[3] Based upon total state funding for the 5th Quarter Including Real Estate Funding

TRLIA Progress Report Overall Funding Status

Cumulative Through September 2009

ELEMENT 1

Elements and Features	State Share Percentage	Overall Budget [1]			Actual Expenses to Date [2]			Remaining Budget			Percentage of Total Budget Expended
		Total	State	Local	Total	State Share	Local Share	Total	State Share	Local Share	
<i>Formula</i>	a	b	c	d = b-c	e	f = e*a	g = e-f	h=b-e	i=c-f	j=d-g	k = e/b
Element 1: Feather River EIP Land Acquisition (see real estate Acquisition Plan)											
1.1 - Feather Segment 2	82.8246%	\$50,450,877	\$39,472,685	\$10,978,192	\$37,343,656	\$30,929,727	\$6,413,929	\$13,107,221	\$8,542,958	\$4,564,263	74.0%
1.2 - Feather Segment 3	70.0000%	\$469,422	\$328,595	\$140,827	\$80,095	\$66,338	\$13,757	\$389,327	\$262,257	\$127,070	17.1%
Subtotal Element 1		\$50,920,299	\$39,801,280	\$11,119,019	\$37,423,750	\$30,996,065	\$6,427,685	\$13,496,549	\$8,805,215	\$4,691,333	73.5%

"6QPRTotElem1"

[1] Revised per the 7th QWP dated August 15, 2009.

[2] Total expenses for project through September 30, 2009 including expenses prior to effective date of agreement

TRLIA Progress Report Overall Funding Status

Cumulative Through September 2009

ELEMENT 2

Elements and Features	State Share %	Overall Budget [1]			Actual Expenses to Date [2]			Remaining Budget			Percentage of Total Budget Expended
		Total	State	Local	Total	State Share	Local Share	Total	State Share	Local Share	
<i>Formula</i>	a	b	c	d = b-c	e	f = e*a	g = e-f	h=b-e	i=c-f	j=d-g	k = e/b
Element 2: Feather River Segment 2 new levee											
(Excludes Levee Tie Ins and Existing Levee Degradation)											
2.1.1: Design	82.8246%	\$6,492,466	\$5,291,919	\$1,200,547	\$6,352,013	\$5,261,028	\$1,090,985	\$140,453	\$30,891	\$109,562	97.8%
2.1.2: Permitting	82.8246%	\$2,614,659	\$2,165,581	\$449,079	\$2,552,122	\$2,113,784	\$438,338	\$62,537	\$51,796	\$10,741	97.6%
2.1.3: Right of Way Support	82.8246%	\$5,648,380	\$4,563,633	\$1,084,746	\$3,068,350	\$2,541,348	\$527,002	\$2,580,030	\$2,022,285	\$557,744	54.3%
2.2: Construction Management	82.8246%	\$6,619,051	\$5,296,963	\$1,322,088	\$4,837,906	\$4,006,975	\$830,931	\$1,781,145	\$1,289,988	\$491,157	73.1%
2.3 Construction of Setback											
2.3.1: Foundation	82.8246%	\$23,235,085	\$18,549,394	\$4,685,692	\$23,357,359	\$19,345,635	\$4,011,724	-\$122,273	-\$796,241	\$673,968	100.5%
2.3.2: Embankment	82.8246%	\$32,154,307	\$25,166,249	\$6,988,058	\$28,950,314	\$23,977,977	\$4,972,337	\$3,203,993	\$1,188,272	\$2,015,720	90.0%
2.3.3: Reloc. of PG&E Facilities	82.8246%	\$3,051,894	\$2,401,913	\$649,981	\$2,156,519	\$1,786,128	\$370,391	\$895,375	\$615,785	\$279,590	70.7%
2.4: Environmental & Cultural Mitigation											
2.4.1: Mitigation & Restoration	82.8246%	\$4,300,000	\$3,561,457	\$738,543	\$4,351,164	\$3,603,833	\$747,331	-\$51,164	-\$42,376	-\$8,788	101.2%
2.4.2: Cultural Mit./Section 106	82.8246%	\$350,000	\$289,886	\$60,114	\$0	\$0	\$0	\$350,000	\$289,886	\$60,114	0.0%
2.5: O&M Manual	82.8246%	\$168,103	\$139,231	\$28,872	\$8,435	\$6,986	\$1,449	\$159,668	\$132,245	\$27,424	5.0%
Subtotal Element 2		\$84,633,946	\$67,426,226	\$17,207,720	\$75,634,182	\$62,643,695	\$12,990,486	\$8,999,764	\$4,782,531	\$4,217,234	89.4%

"6QPRTotElem2"

[1] Revised per the 7th QWP dated August 15, 2009.

[2] Total expenses for project through September 30, 2009 including expenses prior to effective date of agreement

TRLIA Progress Report Overall Funding Status

Cumulative Through September 2009

ELEMENT 3

Elements and Features	State Share %	Overall Budget [1]			Actual Expenses to Date [2]			Remaining Budget			Percentage of Total Budget Expended
		Total	State	Local	Total	State Share	Local Share	Total	State Share	Local Share	
Formula	a	b	c	d = b-c	e	f = e*a	g = e-f	h=b-e	i=c-f	j=d-g	k = e/b
Element 3: Feather River Segment 2 Levee Tie Ins											
3.1.1: Foundation	82.8246%	\$3,298,462	\$2,559,280	\$739,182	\$5,860,484	\$4,853,921	\$1,006,563	-\$2,562,022	-\$2,294,642	-\$267,380	177.7%
3.1.2: Embankment	82.8246%	\$7,166,790	\$5,702,473	\$1,464,318	\$4,338,022	\$3,592,949	\$745,073	\$2,828,768	\$2,109,524	\$719,244	60.5%
Subtotal Element 3		\$10,465,252	\$8,261,752	\$2,203,500	\$10,198,506	\$8,446,870	\$1,751,636	\$266,746	-\$185,118	\$451,864	97.5%

"6QPRTotElem3"

[1] Revised per the 7th QWP dated August 15, 2009.

[2] Total expenses for project through September 30, 2009 including expenses prior to effective date of agreement

TRLIA Progress Report Overall Funding Status

Cumulative Through September 2009

ELEMENT 4

Elements and Features	State Share %	Overall Budget [1]			Actual Expenses to Date [2]			Remaining Budget			Percentage of Total Budget Expended
		Total	State	Local	Total	State Share	Local Share	Total	State Share	Local Share	
<i>Formula</i>	a	b	c	d = b-c	e	f = e*a	g = e-f	h=b-e	i=c-f	j=d-g	k = e/b
Element 4: Feather River Segment 2 Levee Degradation											
4.1: Construction	82.8246%	\$15,996,136	\$11,512,043	\$4,484,093	\$2,174,454	\$1,800,983	\$373,472	\$13,821,682	\$9,711,060	\$4,110,621	13.6%
Subtotal Element 4		\$15,996,136	\$11,512,043	\$4,484,093	\$2,174,454	\$1,800,983	\$373,472	\$13,821,682	\$9,711,060	\$4,110,621	13.6%

"6QPRTotElem4"

[1] Revised per the 7th QWP dated August 15, 2009.

[2] Total expenses for project through September 30, 2009 including expenses prior to effective date of agreement

TRLIA Progress Report Overall Funding Status

Cumulative Through September 2009

ELEMENT 5

Elements and Features	State Share %	Overall Budget [1]			Actual Expenses to Date [2]			Remaining Budget			Percentage of Total Budget Expended
		Total	State	Local	Total	State Share	Local Share	Total	State Share	Local Share	
<i>Formula</i>	a	b	c	d = b-c	e	f = e*a	g = e-f	h=b-e	i=c-f	j=d-g	k = e/b
Element 5: Feather River Segment 3 levee improvement											
5.1.1: Design	70.0000%	\$955,083	\$635,031	\$320,052	\$896,031	\$627,222	\$268,809	\$59,051	\$7,809	\$51,242	93.8%
5.1.2: Permitting	70.0000%	\$313,096	\$219,167	\$93,929	\$186,865	\$130,806	\$56,060	\$126,230	\$88,361	\$37,869	59.7%
5.1.3: Right of Way Support [4]	70.0000%	\$343,821	\$186,695	\$157,126	\$275,898	\$193,128	\$82,769	\$67,923	-\$6,433	\$74,356	80.2%
5.2: Construction Management	70.0000%	\$1,125,663	\$766,809	\$358,854	\$1,101,893	\$771,325	\$330,568	\$23,770	-\$4,516	\$28,286	97.9%
5.3 Construction	70.0000%	\$8,559,203	\$5,988,867	\$2,570,336	\$8,499,220	\$5,949,454	\$2,549,766	\$59,983	\$39,413	\$20,570	99.3%
5.4: O&M Manual	70.0000%	\$79,052	\$55,336	\$23,716	\$1,683	\$1,178	\$505	\$77,369	\$54,158	\$23,211	2.1%
Subtotal Element 5		\$11,375,917	\$7,851,905	\$3,524,012	\$10,961,590	\$7,673,113	\$3,288,477	\$414,327	\$178,792	\$235,535	96.4%

"6QPRTotElem5"

[1] Revised per the 7th QWP dated August 15, 2009.

[2] Total expenses for project through September 30, 2009 including expenses prior to effective date of agreement

TRLIA Progress Report Overall Funding Status

Cumulative Through September 2009

ELEMENT 5A

Elements and Features	State Share %	Overall Budget [1]			Actual Expenses to Date [2]			Remaining Budget			Percentage of Total Budget Expended
		Total	State	Local	Total	State Share	Local Share	Total	State Share	Local Share	
Formula	a	b	c	d = b-c	e	f = e*a	g = e-f	h=b-e	i=c-f	j=d-g	k = e/b
Element 5A: Feather River Segment 3 Erosion Site 2											
5A.1.1 - Design	70.0000%	\$67,247	\$47,073	\$20,174	\$51,985	\$36,389	\$15,595	\$15,262	\$10,684	\$4,579	77.3%
5A.1.2 - Permitting	70.0000%	\$135,302	\$94,711	\$40,591	\$111,341	\$77,939	\$33,402	\$23,961	\$16,772	\$7,188	82.3%
5A.1.3 - ROW Support	70.0000%	\$20,000	\$14,000	\$6,000	\$5,830	\$4,081	\$1,749	\$14,170	\$9,919	\$4,251	29.2%
5A.2 - Construction Management.	70.0000%	\$55,239	\$38,667	\$16,572	\$0	\$0	\$0	\$55,239	\$38,667	\$16,572	0.0%
5A.3 - Construction	70.0000%	\$572,212	\$400,548	\$171,664	\$0	\$0	\$0	\$572,212	\$400,548	\$171,664	0.0%
5A.4 - O&M manual addendum	70.0000%	\$5,000	\$3,500	\$1,500	\$0	\$0	\$0	\$5,000	\$3,500	\$1,500	0.0%
Subtotal Element 5A		\$855,000	\$598,500	\$256,500	\$169,156	\$118,409	\$50,747	\$685,844	\$480,091	\$205,753	19.8%

6QPRTotElem5A

[1] Revised per the 7th QWP dated August 15, 2009.

[2] Total expenses for project through September 30, 2009 including expenses prior to effective date of agreement

TRLIA Progress Report Overall Funding Status

Cumulative Through September 2009

ELEMENT 6

Elements and Features	State Share %	Overall Budget [1]			Actual Expenses to Date [2]			Remaining Budget			Percentage of Total Budget Expended
		Total	State	Local	Total	State Share	Local Share	Total	State Share	Local Share	
Formula	a	b	c	d = b-c	e	f = e*a	g = e-f	h=b-e	i=c-f	j=d-g	k = e/b
Element 6: Feather River Land Management											
6.1: Env. Maintenance	82.8246%	\$100,000	\$82,825	\$17,175	\$100,101	\$82,908	\$17,193	-\$101	-\$84	-\$17	100.1%
6.2: Lease Back	82.8246%	\$50,000	\$41,412	\$8,588	\$0	\$0	\$0	\$50,000	\$41,412	\$8,588	0.0%
6.3: Land Maintenance	82.8246%	\$150,000	\$124,237	\$25,763	\$0	\$0	\$0	\$150,000	\$124,237	\$25,763	0.0%
Subtotal Element 6		\$300,000	\$248,474	\$51,526	\$100,101	\$82,908	\$17,193	\$199,899	\$165,565	\$34,333	33.4%

"6QPRTotElem6"

[1] Revised per the 7th QWP dated August 15, 2009.

[2] Total expenses for project through September 30, 2009 including expenses prior to effective date of agreement

TRLIA Progress Report Overall Funding Status

Cumulative Through September 2009

ELEMENT 7

Elements and Features	State Share %	Overall Budget [1]			Actual Expenses to Date [2]			Remaining Budget			Percentage of Total Budget Expended
		Total	State	Local	Total	State Share	Local Share	Total	State Share	Local Share	
<i>Formula</i>	a	b	c	d = b-c	e	f = e*a	g = e-f	h=b-e	i=c-f	j=d-g	k = e/b
Element 7: Project Management, Legal, Community Relations support, Land Management, and Overhead											
7.1: Salaries	76.3198%	\$1,249,737	\$953,797	\$295,940	\$1,002,893	\$765,406	\$237,487	\$246,844	\$188,391	\$58,453	80.2%
7.2: Consulting	76.3198%	\$1,239,571	\$946,038	\$293,533	\$1,141,699	\$871,342	\$270,357	\$97,872	\$74,695	\$23,176	92.1%
7.3: Legal	76.3198%	\$1,109,497	\$846,766	\$262,731	\$1,045,552	\$797,963	\$247,589	\$63,945	\$48,803	\$15,142	94.2%
7.4: Travel	76.3198%	\$9,827	\$7,500	\$2,327	\$8,005	\$6,109	\$1,896	\$1,822	\$1,391	\$432	81.5%
7.5: General	76.3198%	\$350,756	\$267,696	\$83,060	\$236,031	\$180,138	\$55,893	\$114,725	\$87,558	\$27,167	67.3%
7.6: Insurance	76.3198%	\$461,375	\$352,121	\$109,255	\$700,733	\$534,798	\$165,935	-\$239,358	-\$182,677	-\$56,680	151.9%
7.7: Travel/Vehicle	76.3198%	\$26,273	\$20,051	\$6,221	\$15,193	\$11,595	\$3,598	\$11,080	\$8,456	\$2,624	57.8%
7.8: Memberships	76.3198%	\$18,804	\$14,351	\$4,453	\$18,352	\$14,006	\$4,346	\$451	\$344	\$107	97.6%
Subtotal Element 7		\$4,465,840	\$3,408,320	\$1,057,520	\$4,168,459	\$3,181,359	\$987,100	\$297,381	\$226,961	\$70,421	93.3%

"6QPRTotElem7"

[1] Revised per the 7th QWP dated August 15, 2009.

[2] Total expenses for project through September 30, 2009 including expenses prior to effective date of agreement

Associated Project Elements

TRLIA has reviewed the Associated Element Budgets (Segment 1 work) and expenses incurred through September 30, 2009 and provided the following table to show the funding and budget status of this work. At this time, TRLIA's expenses are within the revised Overall Work Plan Budget and the construction efforts associated with the original scope of work are complete. Additional work on Segment 1 is related to the Crack Repair work for which TRLIA has created a new element to track expenses (Element 9A).

With respect to the original scope of work covered by Associated Element 1, TRLIA has completed all construction and paid the remaining retention expenses.

Remaining work related to the repair of the crack is expected to occur shortly after the approval of the design.

TRLIA has previously made requests to the State to reconsider funding 70% of Segment 1 costs and, TRLIA understands that this funding request will likely be granted shortly. The State is currently working through the administrative processes for approving this funding. TRLIA is continues to monitor the individual feature budgets and providing the State with invoices. Once the funding is approved, the budgets will be incorporated into a new Overall Work Plan Budget and the Associated Elements will become Elements 8 (Segment 1 Real estate), 9 (Segment 1 Levee Improvements) and 9A (Segment 1 Crack Repair).

Summary of TRLIA Quarterly Progress Report Budget Reconciliation

Cumulative Through September 2009

ASSOCIATED ELEMENTS

Elements and Features	State Share Percentage	Overall Budget	Actual Expenses to Date	Remaining Budget	% of Total Budget Remaining	Quarterly Forecast	Actual Quarterly Expenses	Difference
<i>Formula</i>	<i>a</i>	<i>b</i>	<i>c</i>	<i>d = b - c</i>	<i>e = d / b</i>	<i>f</i>	<i>g</i>	<i>h = f - g</i>
Associated Element 1: Feather River EIP Land Acquisition								
Feature 1 - Feather Segment 1	0.0000%	\$572,106	\$96,453	\$475,653	83%	\$0	\$0	\$0
Subtotal Associated Element 1		\$572,106	\$96,453	\$475,653	83%	\$0	\$0	\$0
Associated Element 2: Feather River Segment 1 levee improvement								
Feature 1.1 - Design	0.0000%	\$1,266,552	\$1,152,954	\$113,598	9%	\$27,000	\$15,408	\$11,592
Feature 1.2 - Permitting	0.0000%	\$323,086	\$187,239	\$135,847	42%	\$10,000	\$7,702	\$2,298
Feature 1.3 - ROW Support	0.0000%	\$223,098	\$217,645	\$5,453	2%	\$0	\$1,447	-\$1,447
Feature 2 - Construction Mgt.	0.0000%	\$1,417,557	\$1,359,115	\$58,443	4%	\$40,000	\$3,876	\$36,124
Feature 3 - Construction	0.0000%	\$9,366,159	\$9,142,849	\$223,309	2%	\$677,052	\$180,669	\$496,383
Feature 4 - O&M Segment 1	0.0000%	\$84,052	\$1,029	\$83,023	99%	\$78,052	\$0	\$78,052
Subtotal Associated Element 2		\$12,680,504	\$12,060,831	\$619,673	5%	\$832,104	\$209,101	\$623,003
(Associated Element 9A: Feather River Segment 1 Crack Repair)								
Feature 1.1 - Engineering, Design, Permitting & CM		\$675,000	\$59,153	\$615,847	91%	N/A	\$17,876	N/A
Feature 1.2 - Right of Way Support		\$15,000	\$0	\$15,000	100%	N/A	\$0	N/A
Feature 2 - Construction		\$1,300,000	\$0	\$1,300,000	100%	N/A	\$0	N/A
Feature 3 - Operations & Maintenance Manual		\$10,000	\$0	\$10,000	100%	N/A	\$0	N/A
Subtotal Associated Element 9A		\$2,000,000	\$59,153					
Subtotal Associated Elements		\$13,252,610	\$12,157,284	\$1,095,325	8%	\$832,104	\$209,101	\$623,003

"6QPRAssocElem"