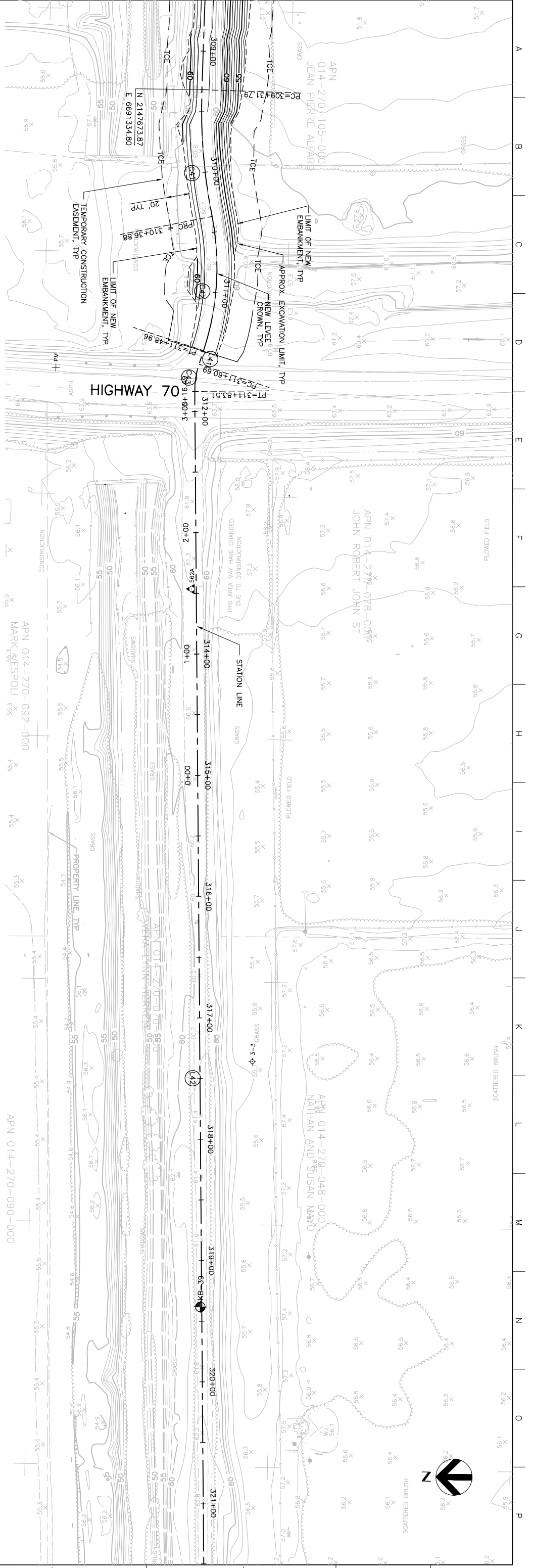


MATCHLINE FOR CONTINUATION SEE DWG C-225

Station	Existing Levee Crown Elevation (TYF)	New Levee Crown Elevation (TYF)
309+00	62.20	60.7
310+00	62.20	60.7
311+00	62.20	60.5
312+00	62.20	61.9
313+00	62.20	62.20
314+00	62.20	61.3
315+00	62.20	60.7
316+00	62.20	60.6
317+00	62.20	60.5
318+00	62.20	60.4
319+00	62.20	60.1
320+00	62.20	60.1
321+00	62.20	60.0
322+00	62.20	60.4
323+00	62.20	61.1
324+00	62.20	61.2
325+00	62.20	61.4
326+00	62.20	61.4
327+00	62.20	61.9
328+00	62.20	62.2
329+00	62.20	62.2
330+00	62.20	62.2
331+00	62.20	62.2
332+00	62.20	62.2

**PROFILE**  
SCALE: HORIZ: 1" = 40'  
VERT: 1" = 10'



**PLAN**  
SCALE: 1" = 40'

Issue No.	0	ISSUED FOR CONSTRUCTION	Date	5/18/05	Drawn	ACC	Checked	PUH	Revised By	CEK	Project No.	201064-19703	Issue	X
Issue No.			Date		Drawn		Checked		Revised By		Project No.	C226.DWG	Issue	

**REGISTERED PROFESSIONAL ENGINEER**  
KIMBERLY KRAMANIC  
No. 61763  
Exp. 12/31/06  
State of California  
5/18/05

**HDR**  
HDR Engineering, Inc.  
300 SOUTH MAIN STREET, SUITE 200  
SACRAMENTO, CALIFORNIA 95834

Project Manager: K. MYERS  
Designed: C. KRIVANEC  
Designed: P. HRADLICK  
Checked: A. COLLINS

Phase II Levee Repairs  
Upper Bear River, W/P Interceptor Canal and Yuba River  
Reclamation District No. 784  
Marysville, California  
Three Rivers Levee Improvement Authority

Date: MAY, 2005  
Scale: AS NOTED

Project No.: 201064-19703  
File Name: C226.DWG  
Drawing No.: C-226