

C:\pwworking\SDC\acivil\m\20120286\C-04.DWG  
09-18-08 ACOLLINS 14:07:34

Rev	Date	Description
1	8/31/06	NEW TOE LINE SHOWN ON DRAWING
A	6/12/06	ISSUED FOR BIDS

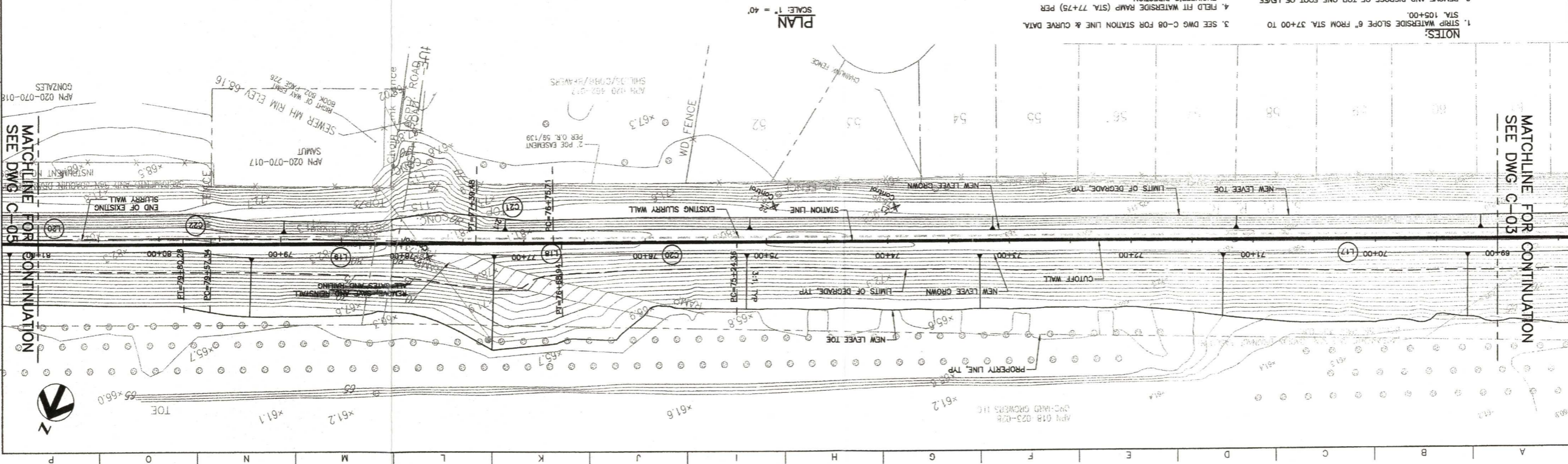
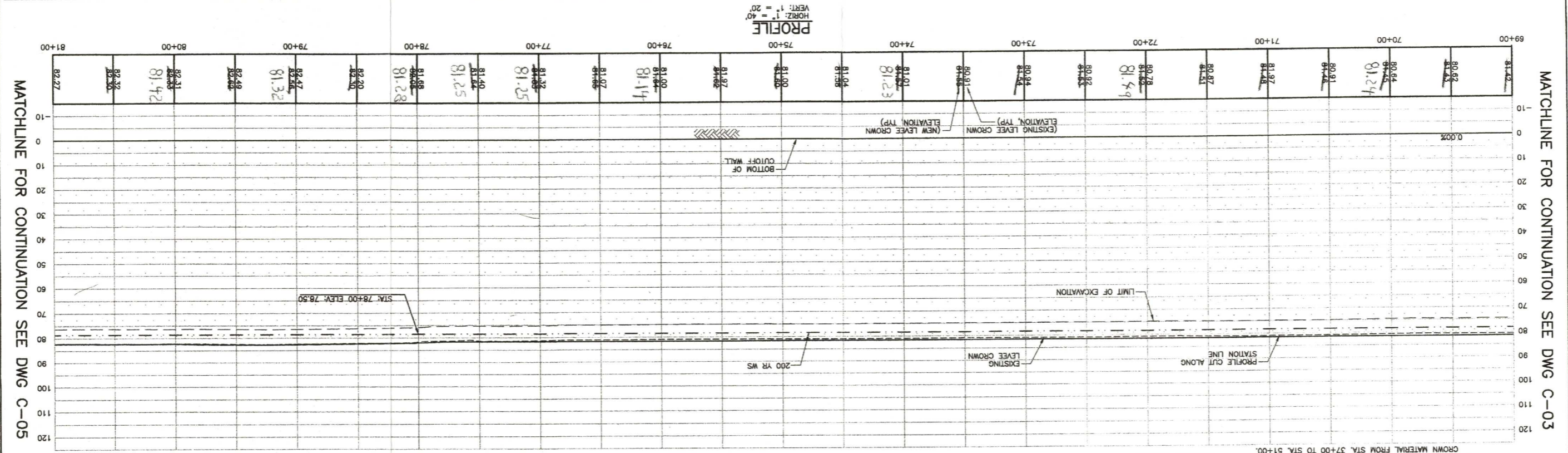
Proj	Engr	Check	Date
KRM	BWJ	PJH	6/12/06
KRM	BWJ	PJH	8/31/06



Project Manager  
K. MYERS  
Designed  
B. JOHNSON  
Checked  
P. HRADLEK  
Drawn  
A. COLLINS

Phase IV Levee Repairs  
Yuba River  
Reclamation District No. 784  
Marysville, California  
Three Rivers Levee Improvement Authority

YUBA RIVER  
PLAN AND PROFILE  
STATION 69+00 TO 81+00  
Project No. 201064-36522  
File Name C-04.DWG  
Date JUNE, 2006  
Scale AS NOTED  
Drawing No. C-04  
Sheet A



**NOTES:**  
 1. STRIP WATERSIDE SLOPE 6" FROM STA. 37+00 TO STA. 105+00.  
 2. REMOVE AND DISPOSE OF TOP ONE FOOT OF LEVEE CROWN MATERIAL FROM STA. 37+00 TO STA. 51+00.  
 3. SEE DWG C-08 FOR STATION LINE & CURVE DATA.  
 4. FIELD FIT WATERSIDE RAMP (STA. 77+75) PER ENGINEER'S DIRECTION.

MATCHLINE FOR CONTINUATION SEE DWG C-05

MATCHLINE FOR CONTINUATION SEE DWG C-03

MATCHLINE FOR CONTINUATION SEE DWG C-05

MATCHLINE FOR CONTINUATION SEE DWG C-03



